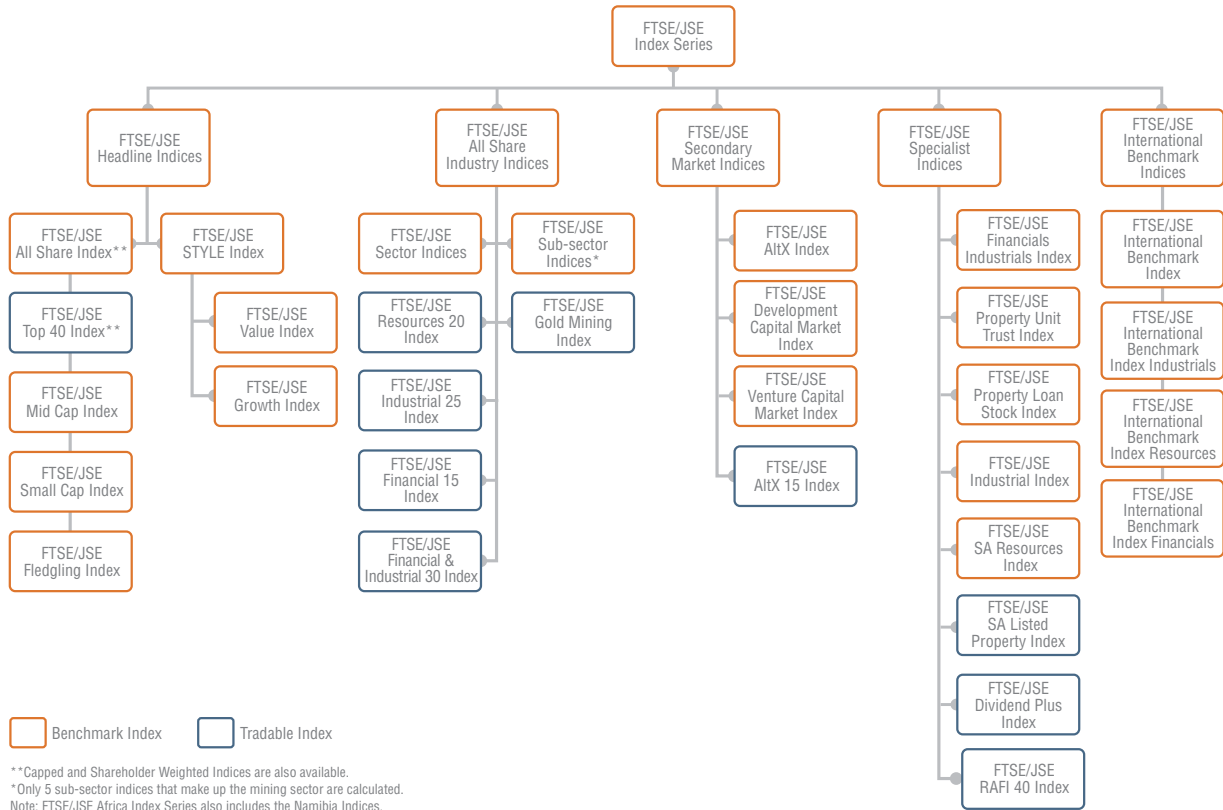


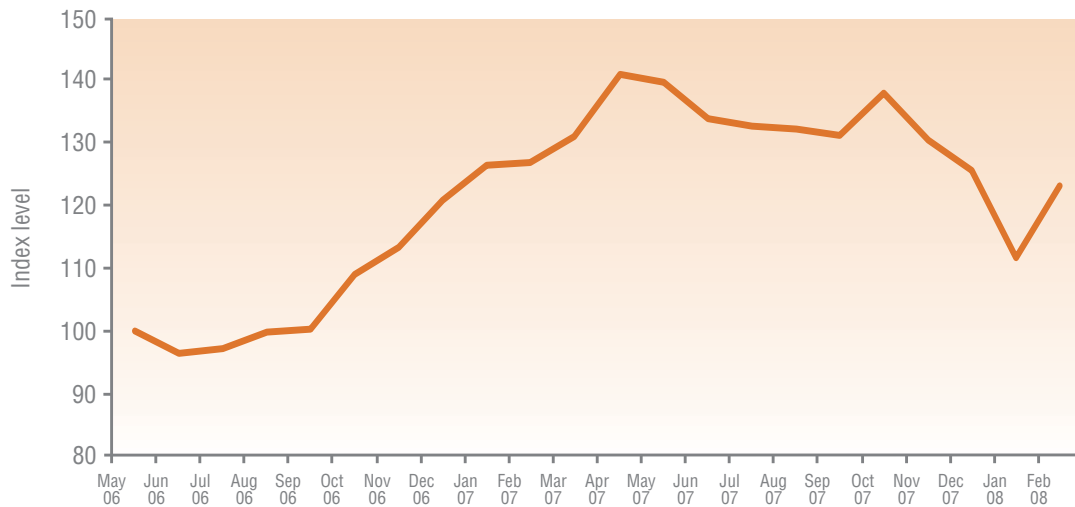


FTSE/JSE Dividend + Index – Fact Sheet

FTSE/JSE Africa Index Series – linked for diversity



FTSE/JSE Dividend+ Index Performance (ZAR total return)





FTSE/JSE Dividend + Index – Fact Sheet

FTSE/JSE DIVIDEND+ INDEX: TOP 10 CONSTITUENTS

Rank*	Security	Sector	Net Market Cap (ZARmil)	FTSE/JSE Div+ Index Weight (%)	% Weighting within Sector
1	JD Group	General Retailers	35,182	3.98%	19.09%
2	African Bank Invest	General Financial	65,420	7.39%	56.67%
3	Telkom	Fixed Line Telecommunications	37,674	4.26%	100.00%
4	Woolworths Holdings	General Retailers	28,621	3.23%	15.53%
5	Foschini	General Retailers	31,944	3.61%	17.33%
6	Lewis Group	General Retailers	32,917	3.72%	17.86%
7	Imperial Holdings	Industrial Transportation	21,795	2.46%	100.00%
8	Nampak	General Industrials	24,980	2.82%	57.67%
9	Investec PLC	General Financial	24,919	2.82%	21.59%
10	ArcelorMittal South Africa Ltd	Industrial Metals	58,844	6.65%	100.00%
Total			362,296	40.94%	

FTSE/JSE DIVIDEND+ INDEX: SECTOR BREAKDOWN

ICB Code	Sector	No. Constituents	Net Market Cap (ZARmil)	FTSE/JSE Div+ Index Weight (%)
530	Oil and Gas	0	0.00	0.00%
4530	Health Care Equipment & Services	0	0.00	0.00%
5550	Media	0	0.00	0.00%
1730	Forestry & Paper	0	0.00	0.00%
1750	Industrial Metals	1	58,844	6.65%
1770	Mining	3	136,939	15.47%
2350	Construction & Materials	1	26,113	2.95%
2720	General Industrials	2	43,318	4.89%
2730	Electronic & Electrical Equipment	1	19,424	2.19%
2770	Industrial Transportation	1	21,795	2.46%
2790	Support Services	0	0.00	0.00%
3530	Beverages	0	0.00	0.00%
3570	Food Producers	2	41,605	4.70%
3720	Household Goods	0	0.00	0.00%
3760	Personal Goods	0	0.00	0.00%
5330	Food & Drug Retailers	1	18,671	2.11%
5370	General Retailers	6	184,327	20.83%
6530	Fixed Line Telecommunications	1	37,674	4.26%
6570	Mobile Telecommunications	1	19,522	2.21%
8350	Banks	4	90,245	10.20%
8570	Life Insurance	3	71,084	8.03%
8730	Real Estate	0	0.00	0.00%
8770	General Financial	3	115,439	13.04%
			885,001	100.00

FTSE/JSE DIVIDEND+ INDEX: PORTFOLIO CHARACTERISTICS

Attribute	Value
Number of Constituents	30
Net Market Cap (ZARmn)	885,001
Company Size: (Adjusted ZARmn)	
Average	29,500
Largest	65,420
Smallest	17,098
Median	25,041
Weight Largest Company (%)	7.39%
Top 10 Holdings (% Net Market Cap Share)	40.94%

Source: JSE. Data as at Feb 29, 2008. *Constituents ranked by 1 year forward dividend yield.

»» Tel: +27 11 520 7000
 Email: infoproductsales@jse.co.za
www.jse.co.za