

Nutron Front End Global Markets

Basic Operation Guide



Created by: STT
Reviewed by:
Quality Assured:
Approved by:
Date: 14 May 2010
Version: Ver.01

Table of Contents

1. Version Control.....	3
2. Introduction	4
2.1 Overview	4
3. Accessing the Front End	5
3.1 Launching The Front End	5
4. Default Windows.....	6
4.1 Adding Global Market Defaults	6
4.2 Adding Alternative Global Market Windows and Tabs	6
5. Connection and Set Up	7
5.1 Connection Settings	7
5.2 Logging In	7
5.3 User Configuration	7
6. Trading and Trades Views	8
6.1 Global Trading Screens	8
6.2 Viewing Global Market Trades	8
6.3 Report Only Trades On Global Market	8
6.4 Positions	9

1. Version Control

Version	Author	Date	Reason for Changes

2. Introduction

This document contains a basic guide to accessing, configuring and operating the global market using the Nutron Front end.

2.1 Overview

This guide is intended for traders who are using and are familiar with the current Nutron Front End and who are required to trade on Global Market Contracts.

3. Accessing the Front End

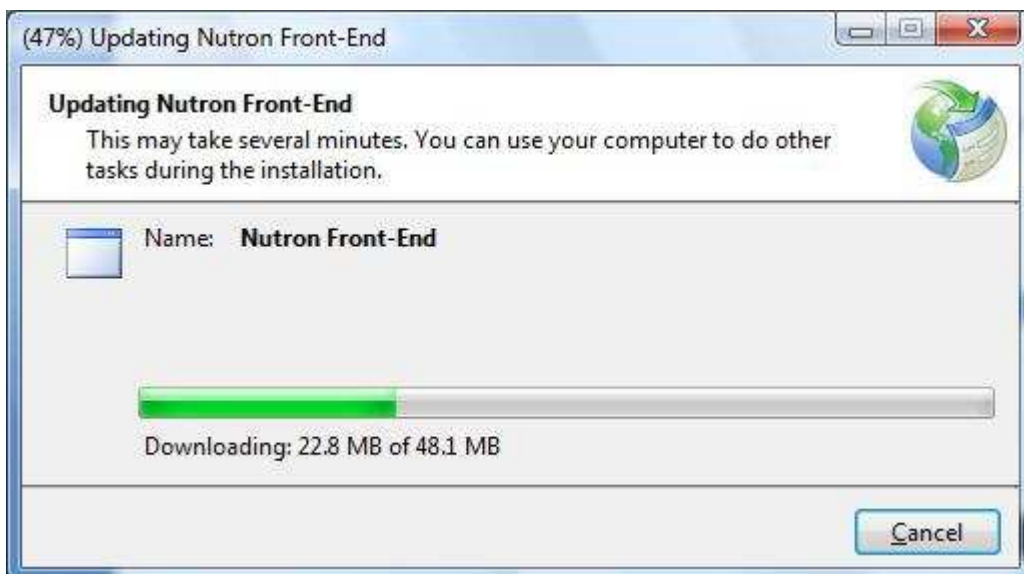
3.1 Launching The Front End

Accessing the Nutron Front End from the Start Menu:

- From the Windows “Start Menu”, select “All Programs”.
- Locate the “JSE Securities Exchange” and click the “Nutron Front End”.
- If prompted for an update click the “Ok” button



- The User may use their pc while the update is taking place.



- Once the update has been successful the user may then begin configuring their front end to connect to the global market.

4. Default Windows

4.1 Adding Global Market Defaults

Due to the Global Market being an “add on” on the Nutron front end, it does not have its own independent connection settings, member code, dealer code, or trading views. In this respect it will “Piggy-Back” on the existing Safex market. Keeping this in mind please see below steps for getting started on the Global Market.

- From the “Config” drop down list click “Add Default Windows”.
- Please note that “Global Market” check box is defaulted to true when the Default User screen opens.
- Flag the market/markets that the user will require default windows for and click the “Load Defaults” button.

*** NB * If the user already has default windows added there will be no need to re-add these windows, only the “Global Market” will be required.**

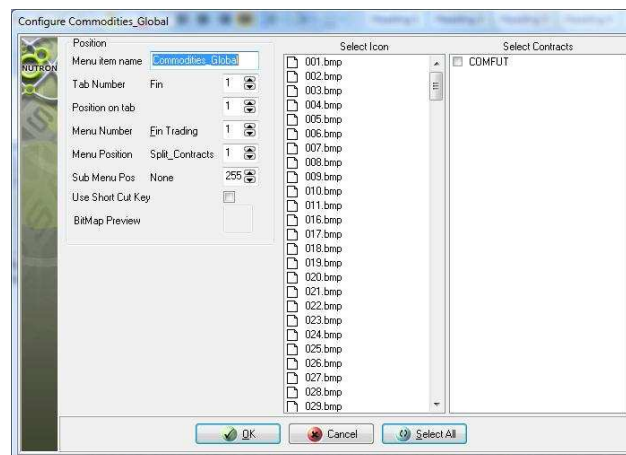


- The Nutron Front End will now populate with an extra Menu Item and Tab for the global Market.

4.2 Adding Alternative Global Market Windows and Tabs

If the User does not require the entire Global Market windows and trading screens the user can add these to their existing tabs and menus.

- From the “Config” drop down list click “Add Trading Windows”.
- From the “Market” drop down list select the “Global_Product_Mkt”.
- From the “For What” drop down list select the trading screen required and click the “Ok” button.
- Using the “Configure Commodities Global” screen select the destination on the Nutron Front End that the trading window will be added to.



5. Connection and Set Up

5.1 Connection Settings

Connection settings will determine which connection data the user requires the front end to set as a 'default market' when logging into the Global Market.

- From the "Config" drop down list select the "Select User" submenu item and click "Primary Logon".



- This will open the "Default User" box, if not already defaulted, enter in Member Code, Dealer Code, Exchange Domain and click the "Ok" button.
- Using the "Connection Data" box enter in all relevant data, flag the "Use As Global Market" check box and click the "Ok" button.

*** NB * If the user logs into both APD and EDM with the same member/dealer code then the user will need to choose which market they would prefer the trading data to apply to.**

5.2 Logging In

Once the connection settings have been successfully set up the User can then proceed to login.

- Using the Nutron Front End click the login button.



- Enter in users' password and click the "Ok" button.
- The Nutron Front End will then proceed to log into the relevant markets.

5.3 User Configuration

The user configuration settings for which the global market will be taken from, will depend on which market the user selected to link their connection settings to prior to logging in. Please refer to [Connection Settings](#)

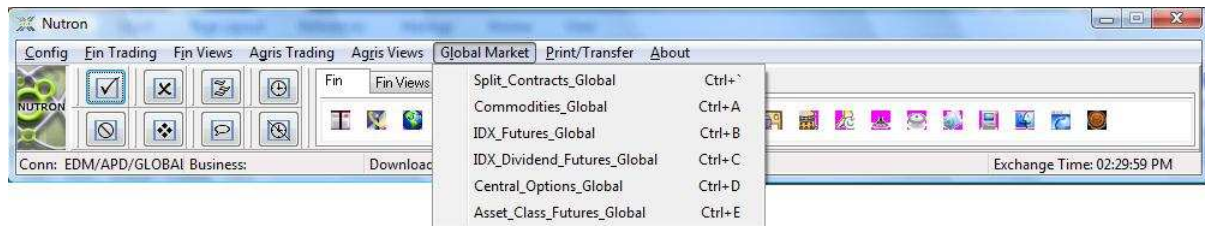
- To change the current settings for a market, from the "Config" drop down list select the "User Config" submenu item and click relevant market.
- Click the required tab in the "User Configuration" window and change relevant data.

6. Trading and Trades Views

6.1 Global Trading Screens

The below steps are only relevant to users who added the global markets default windows. For users who have added individual windows and tabs, please replace “Global Market drop down list” with the relevant destination.

- Using the Nutron Front End click the “Global Market” drop down list, all trading screens relating to the global market will be available in this drop down list.



6.2 Viewing Global Market Trades

The views for which the global market trades will be displayed in, will depend on which market the user selected to link their connection settings to prior to logging in. Please refer to [Connection Settings](#)

- When entering in a trade on the global market, from the relevant drop down list click “View Trades”.

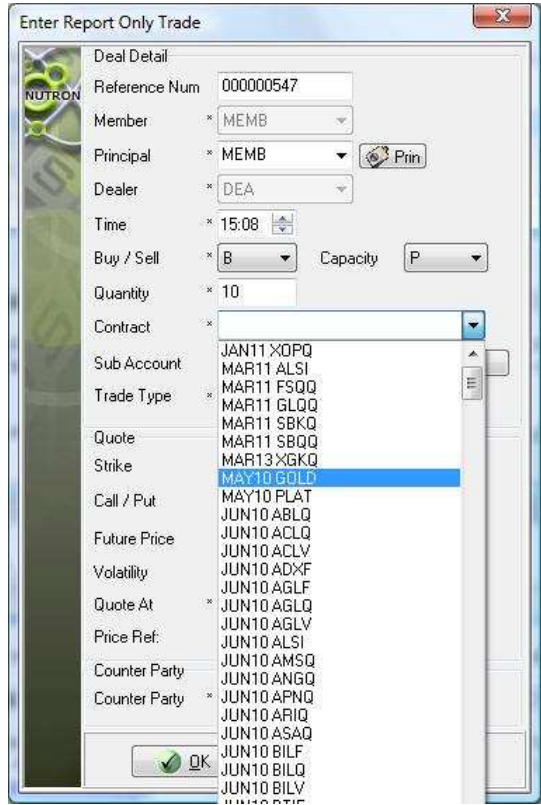
Contract	Prin	Master Client	Buy/Sell	Qty	Price	Dealt at	Ref No	Exchange Ref	Version	Dealer	Time	Enter Time	Location Tim	Seq No	Origin	SubAcc	Member	Capacity	Trade Type	Contract #
MAY10 GOL MEMB		HEN662	Buy	10	142.0000	142.0000	000000543	4A000043A	0	DEA	14:44:40	14:44:40	00:00:00	206	OnScreen		MEMB	P		MAY10
MAY10 GOL HEN662		HEN662	Sell	10	142.0000	142.0000	000000544	4A000043B	0	DEA	14:44:40	14:44:40	00:00:00	206	OnScreen		MEMB	P		MAY10

- All deal management required to be done on the global market can be done from this view.

6.3 Report Only Trades On Global Market

The market for which a report only trade can be created and viewed on a global market contract, will depend on which market the user selected to link their connection settings to prior to logging in. Please refer to [Connection Settings](#)

- When entering a report only for a global contract click the “Enter Report Only Trade” from the drop down list for the relevant market.
- From the “Contract” drop down list select the global market contract required for the report only trade.



- Once all data has been entered and report only has been submitted navigate to the relevant drop down view and select the “Unmatched Trades” view.
- All reported trades for the global market will be present in this view.

6.4 Positions

All positions that have been created on the global market will be available for viewing in the market the user selected to link their connection settings to prior to logging in. Please refer to [Connection Settings](#)

Seq No	Member	Dealer	Prin	Master Client	Contract	Open	Buy	Sell	Curr
464	MEMB	DEA	MEMB		MAY10 GOL	0	10	10	0
465	MEMB	DEA	HEN662	HEN662	MAY10 GOL	0	10	10	0