

# ETFs in a Nutshell

Nerina Visser CFA  
Leaderex – September 2017

---



# Exchange Traded Funds (ETFs)

---



- **What** is it? (hint: it's not an EFT)
- **How** do you use it in investments?
- **Which** ETFs should you choose?
- **Where** and **How** can you invest in ETFs?
- **Want** to know more? Visit [etfSA.co.za](http://etfSA.co.za)

# ETFs – what investing in it, is NOT

JSΞ

- Get-rich-quick scheme
- Trading in individual shares
- Forex trading
- Going to provide you with an income (immediately)



# ETFs – what investing in it, IS

---

JSE

- Building up **wealth**
- Buying a **share** of the **SA economy**
- Getting part **ownership** of the **JSE**
- Best left alone for at least **3-5 years**



# ETFs – what is it?

---



- A **package** deal
- A **box** of chocolates
- A **hamper** of goodies
  
- What is in the **hamper**?
  - Different **types** – Christmas, Valentine’s Day, Back-to-School
  - Every ETF has a ‘**theme**’, e.g. Resource companies, High dividend stocks, Inflation-linked bonds, Physical gold, etc.
  - Theme is defined by the **index** that the ETF follows / tracks

# ETFs – what is it?

---



Listed (necessarily)          index-tracking (usually)          unit trust (sometimes)

- **Listed**: Securities listed and traded like normal shares on the stock exchange
- **Index-tracking**: Fund replicates the make up of the reference index
- **Collective Investment Scheme (CIS)**: also called a Unit Trust or Mutual Fund

# Saving vs. Investing

---



- Saving
  - Money that you plan to **spend** at some future date
  - Key requirement is capital **preservation**
- Investing
  - Acquisition of **assets** that can **generate an income** in future
  - Key focus is on capital **growth**

# Savings in the bank

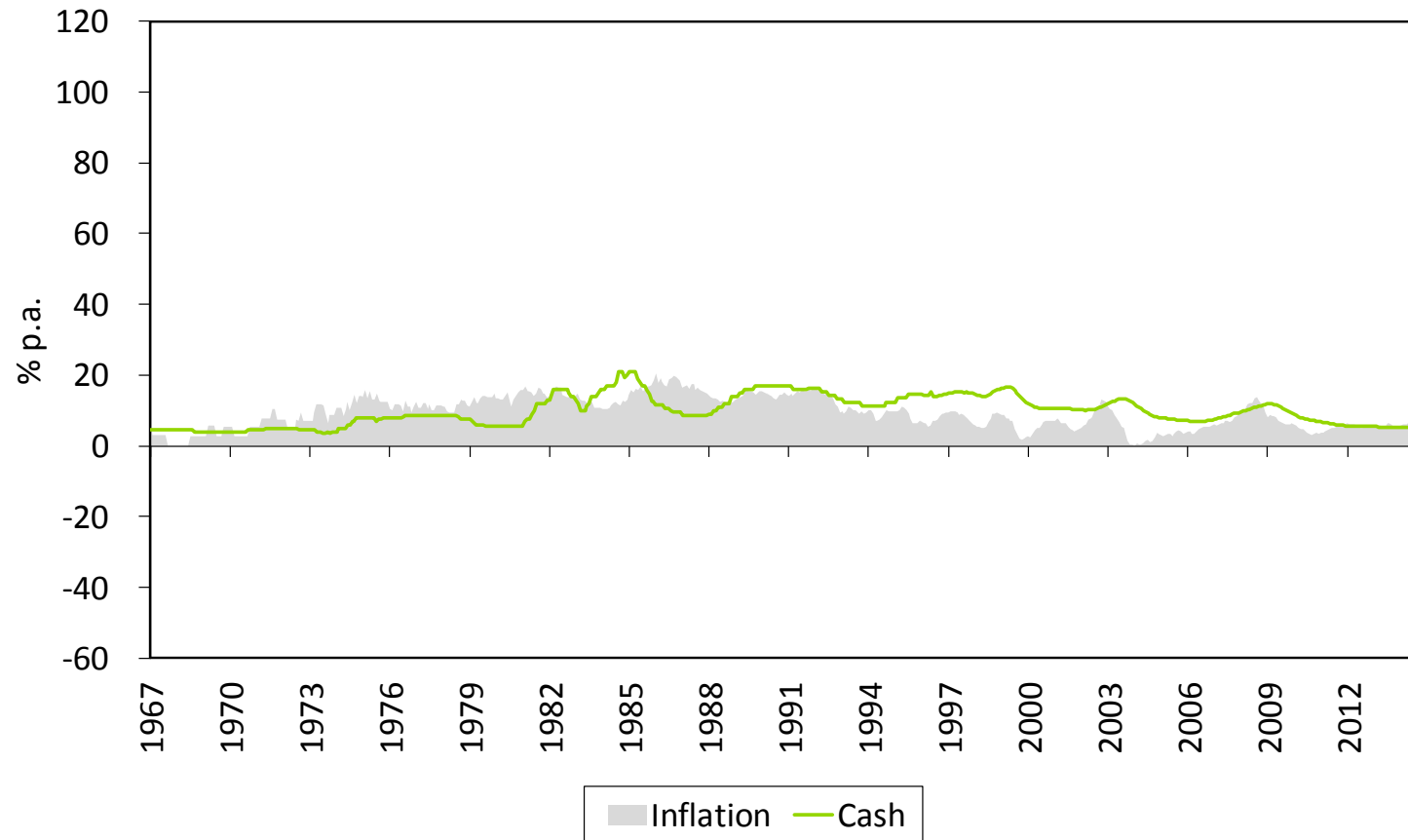
---



- R100 in the bank
- 3% interest rate p.a.
- After one year you have R103
- Nothing more – Nothing less
- But inflation is >5%, so your money is now worth less...



# Savings in the bank



Source: JSE data; etfSA calculations

# Investment in the stock market

Buying **shares** in companies

---

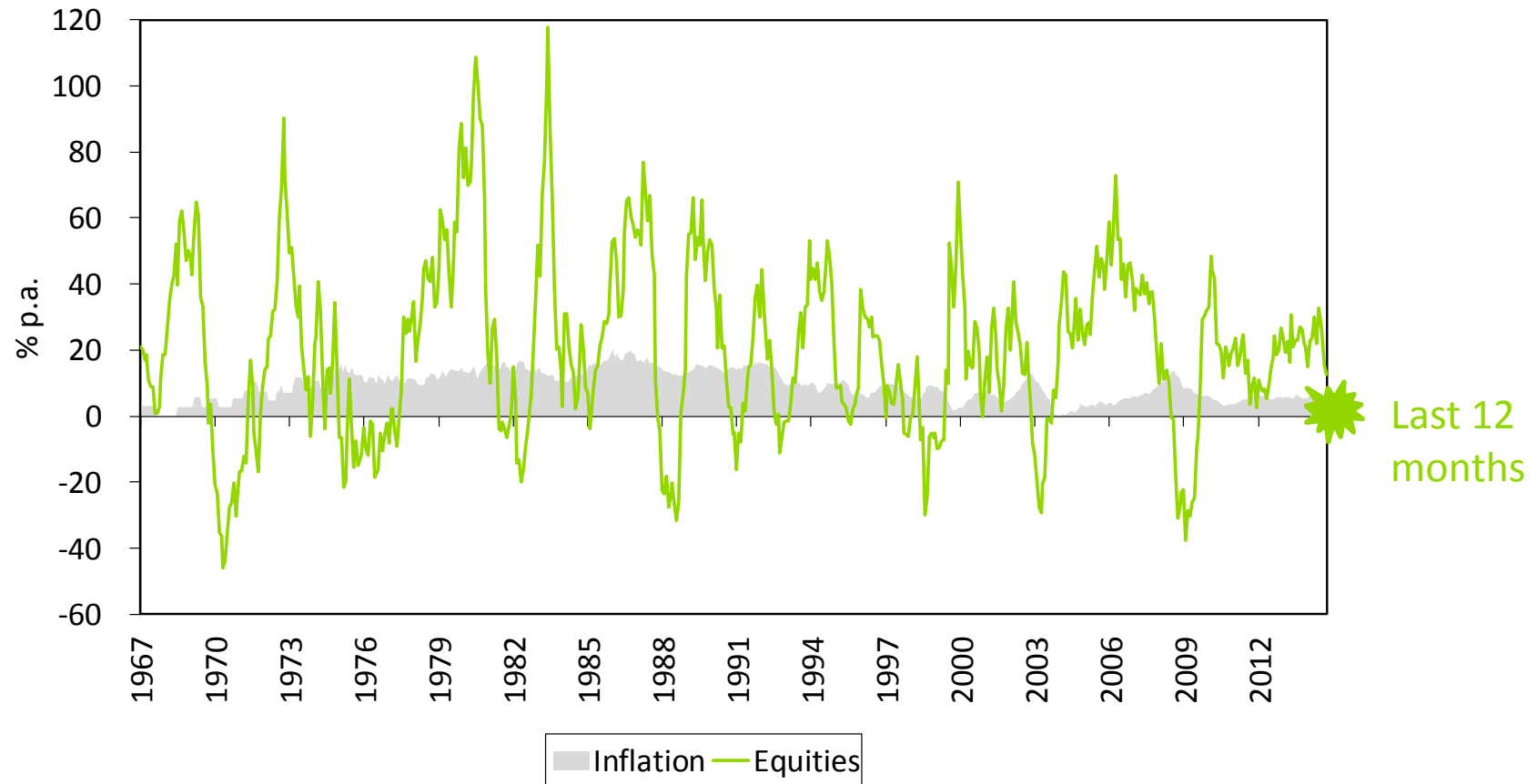


- **R100** in the stock exchange
- **20%** rate of return p.a. **on average\***
- After one year you have **R120 on average**
  
- **BUT**
  - In a bad year you could lose 20% → R80
  - In a good year you could get 35% → R135

\* Last 50 years

# Investment in the stock market

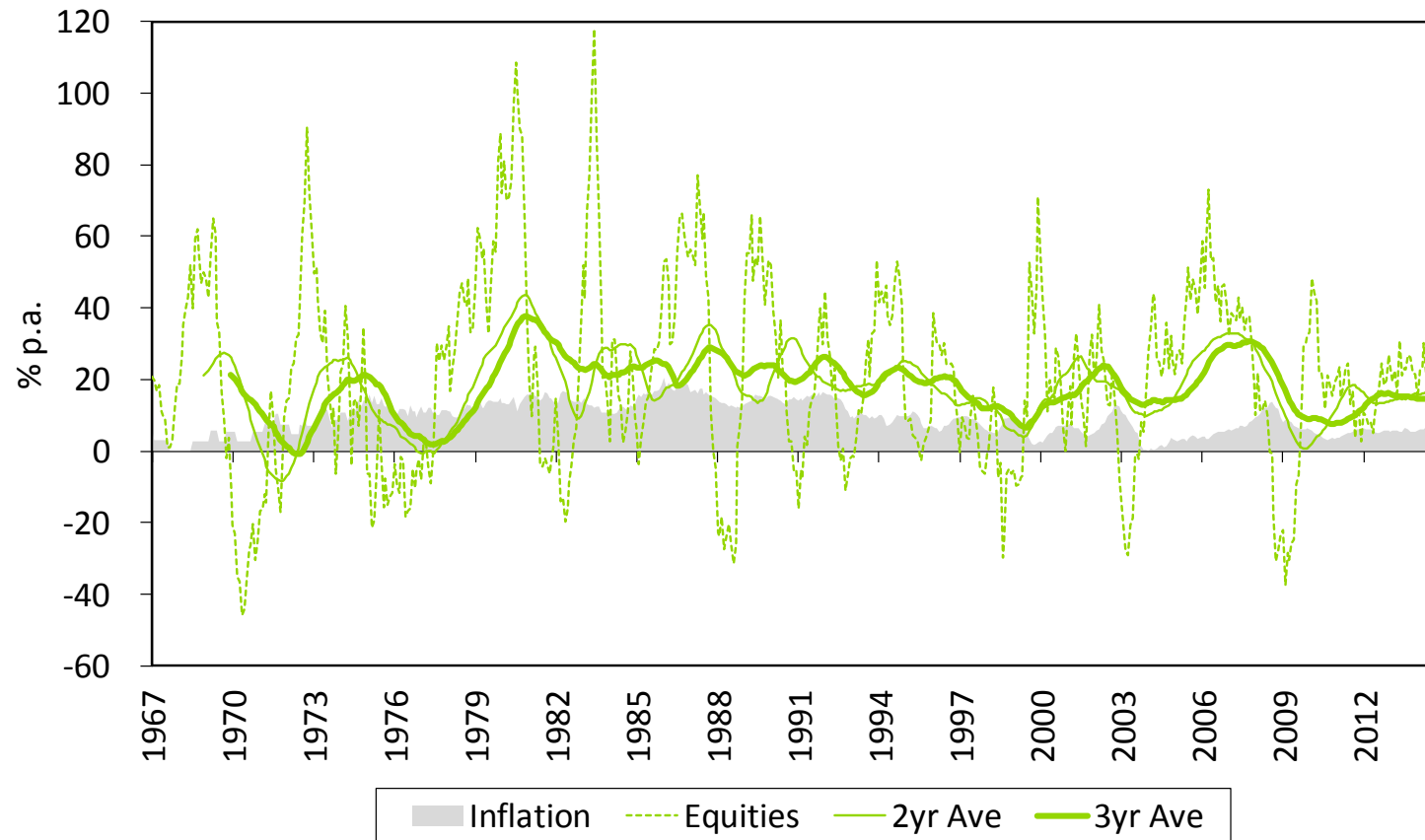
Buying **shares** in companies



Source: JSE data; etfSA calculations

# How do you deal with this variability?

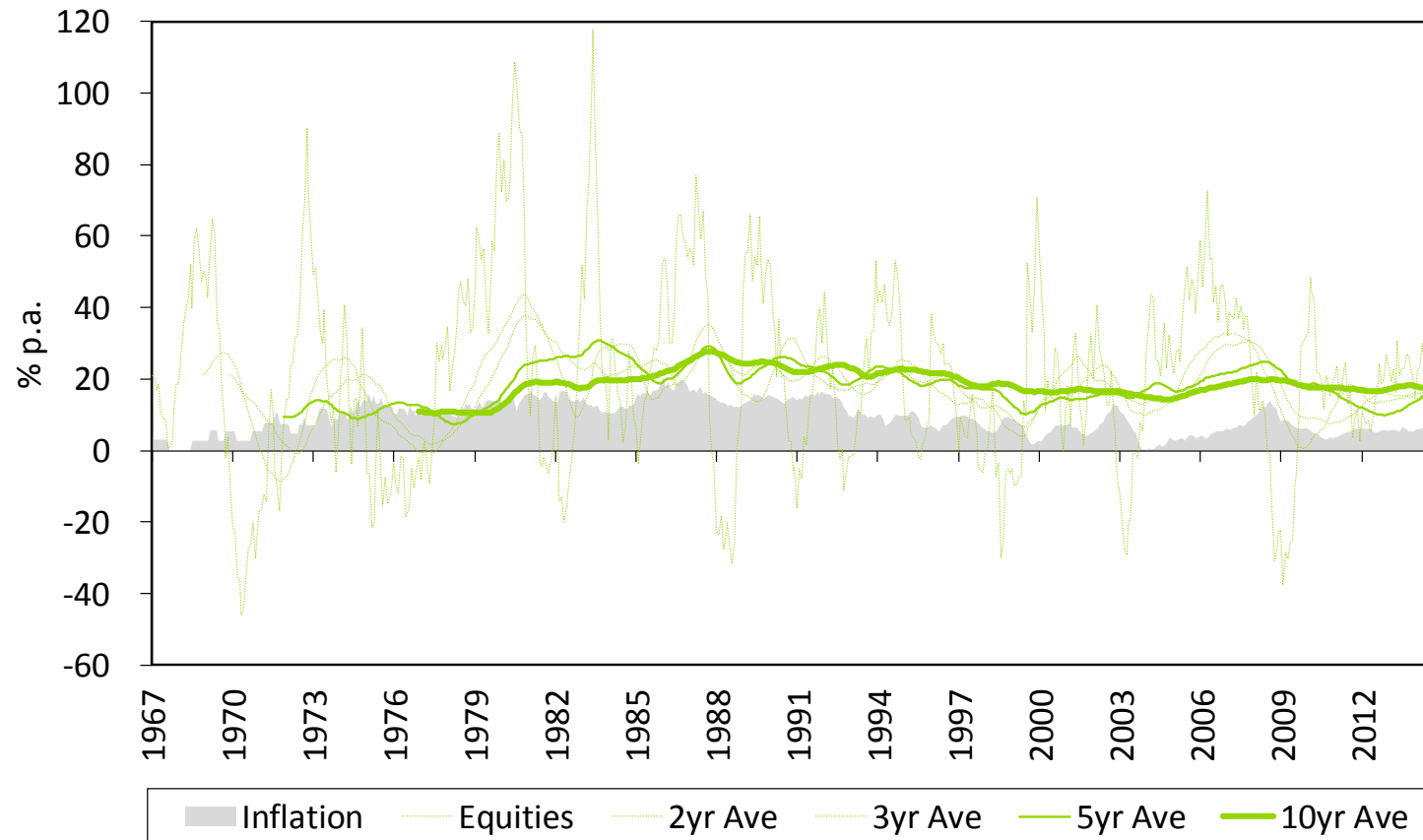
The power of “time in the market”



Source: JSE data; etfSA calculations

# How do you deal with this variability?

The power of “time in the market”



Source: JSE data; etfSA calculations

# How do you use ETFs in investments?

---



- Open an **investment account**
- Buy **ETFs** in the account
  
- You can't open a **tax-free ETF**
- You open a **tax-free account**, and buy ETF(s) in it
  
- You can't open a **discretionary ETF**
- You open a **discretionary account**, and buy ETF(s) in it

# Tax Free Investment Account

---



## Benefits

- No tax whatsoever – no capital gains tax, no dividend withholding tax, no interest tax
- No restriction on withdrawals – timing or amount

## Disadvantages

- Annual (R33,000) and lifetime (R500,000) contribution limits
- Restrictions on underlying investments, e.g. only ETFs/unit trusts without performance fees

## Who?

- Only individuals, SA residents (SA bank account)

# Discretionary Investment Account

---



## Benefits

- No contribution limits
- No constraints on underlying investments

## Disadvantages

- No tax benefit on contribution
- No tax benefit on withdrawal

## Who?

- Anyone – individuals, investment clubs, stokvels, trusts, companies, third party investments, joint accounts, etc.



# Which ETF(s) should you choose?

Long term capital growth

---



## Broad-based, large cap domestic equities

- FTSE/JSE **Top 40** Index
  - Satrix 40, Stanlib Top 40, Ashburton Top 40
- FTSE/JSE **SWIX 40** Index
  - Satrix SWIX 40, Stanlib SWIX 40, NewFunds SWIX 40
- S&P Capped SA **Top 50** Index
  - CoreShares Top 50
- Other
  - CoreShares **Equally Weighted** Top 40, Satrix **RAFI** 40, NewFunds S&P **GIVI** SA Top 50, NewFunds **Shariah** Top 40

# Which ETF(s) should you choose?

Sector, size rotation

---

JS

## Specific sector, size exposure

- Resources
  - Satrix RESI 10, NewFunds GIVI SA Resources
- Financials
  - Satrix FINI 15, NewFunds GIVI SA Financials
- Industrials
  - Satrix INDI 25, NewFunds GIVI SA Industrials
- Smaller size
  - Ashburton MidCap

# Which ETF(s) should you choose?

Alpha potential, Thematic exposure

---

JS

## Factor / Strategy, Theme (“smart”)

- Dividend strategies
  - Satrix Divi+, CoreShares Dividend Aristocrats
- Reduced Volatility
  - CoreShares Low Volatility
- Momentum
  - NewFunds Equity Momentum
- High Quality
  - Satrix Quality\*
- BEE compliance
  - NewFunds New SA

\* Lists on 26-Sep-17

# Which ETF(s) should you choose?

High Yield (REIT dividend income)

---



## Listed Property

- SA Listed Property, SA primary listing
  - CoreShares Proptrax SAPY, Stanlib Property
- SA Listed Property, SA primary listing, Equally Weighted
  - CoreShares Proptrax Ten
- SA Listed Property, primary listing anywhere
  - Satrix Property
- Global Property
  - CoreShares Global Property

# Which ETF(s) should you choose?

High Yield (interest income)

---



## Fixed Interest / Bonds

- SA Government Bonds
  - NewFunds GOVI
- SA Inflation-linked Bonds
  - Ashburton Inflation-X, NewFunds ILBI, Satrix ILBI
- SA Cash
  - NewFunds TRACI 3m
- US Treasuries
  - Firststrand US Dollar Custodial Certificates\*
- SA Preference Shares
  - CoreShares PrefTrax

\* Non-CIS, so does not qualify for tax free accounts

# Which ETF(s) should you choose?

Rand-hedge, Global diversification

---



## International Equities

- Global
  - DBX MSCI World\*, Satrix MSCI World
- Regional
  - Satrix MSCI Emerging Markets; Cloud Atlas Africa ex-SA Big 50
- Country
  - USA: DBX MSCI US\*, CoreShares S&P 500, Satrix S&P 500
  - UK: DBX FTSE 100\*
  - Europe: DBX EuroStoxx 50\*
  - Japan: DBX MSCI Japan\*

\* To be rebranded Itrix (Sygnia)

# Which ETF(s) should you choose?

Asset diversification

---



## Multi-Asset Balanced Funds

- Higher risk (higher equity exposure)
  - NewFunds MAPPS Growth
- Lower risk (lower equity exposure)
  - NewFunds MAPPS Protect

# Which ETF(s) should you choose?

Physical assets

---

JS

## Precious Metals\*

- **Gold**
  - ABSA NewGold, Standard Bank Africa Gold, Firstrand Krugerrand Custodial Certificates
- **Platinum**
  - ABSA NewPlatinum, Standard Bank Africa Platinum
- **Palladium**
  - ABSA NewPalladium, Standard Bank Africa Palladium
- **Rhodium**
  - Standard Bank Africa Rhodium

\* All non-CIS, so does not qualify for tax free accounts



# Where and How can you Invest in ETFs?

---



- **Stockbroker** (preferably **low cost online** broker)
  - Standard Bank Online, Easy Equities, ABSA Stockbrokers, etc.
- **Investment plan with ETF provider**
  - SatrixNOW, CoreShares Online, ABSA Core Investment Account, Sygnia Alchemy, etc.
- **etfSA.co.za**
  - **All** JSE-listed Exchange Traded Products
  - Tax-free, Discretionary, Retirement Annuities, Living Annuities, ETF Managed Portfolio services

# Advantages of using the etfSA Investor Plan®



- Lump sum investments from R1000
- Debit orders from R300 per month
- Automatically reinvests dividends (four times a year)
- Very low brokerage rate (0,08% +VAT)
- Sliding scale administration fee (0,35% - 0,65% p.a. +VAT)
- Facilitate third party investments
- Ideal for Investor Clubs / Stokvels
- Can view accounts online at any time
- Authorised to give advice (no additional fee)

[www.etfsa.co.za](http://www.etfsa.co.za)

# etfSA Contact Details



---

<b>Discretionary Investments</b>	010 446 0371	info@etfsa.co.za
<b>Tax Free Investment Accounts</b>	010 446 0371	taxfree@etfsa.co.za
<b>Retirement Annuity Funds</b>	010 446 0374	rafunds@etfsa.co.za
<b>Living Annuity Funds</b>	010 446 0374	lafunds@etfsa.co.za
<b>Portfolio Management Service</b>	010 446 0372	portfolios@etfsa.co.za

---

## Mike Brown

Managing Director

010 446 0377

mikeb@etfsa.co.za

## Nerina Visser

ETF Strategist

010 446 0376

nerinav@etfsa.co.za

---

Websites: [www.etfsa.co.za](http://www.etfsa.co.za)

[www.etfsara.co.za](http://www.etfsara.co.za)

Twitter: @etfSA

@Nerina\_Visser

**Terms and conditions:** Redistribution, reproduction, the resale or transmission to any third party of the contents of this article and this website, whether by email, newsletter, internet or website, is only possible with the written permission of etfSA. etfSA, its sponsors, administrators, contributors and product providers disclaim any liability for any loss, damage, or expense that might occur from the use of or reliance on the data and services provided through this website. etfSA.co.za is the registered trading name of M F Brown, an authorised Financial Services Provider (FSP No 39217). etfSA.co.za is licensed to provide financial services in the following categories: Collective Investment Schemes; Shares and Securities; Retail Pension Fund Benefits; short-Term deposits; Friendly Society Benefits and Long-Term Insurance Category C. Professional Indemnity Insurance is maintained.

# Disclaimer



- This presentation is intended to provide general information regarding the [the basics of Shares and Investing], and is not intended to, nor does it, constitute investment or other professional or financial product advice and is not intended to be used as the basis for making an investment decision. It is prudent to consult professional advisers before making any investment decision or taking any action which might affect your personal finances or business.
- This presentation has been prepared without taking into account the investment objectives, financial situation or particular needs of any particular person. Past performance is no guarantee of future performance.
- The JSE Limited (“JSE”) and its respective directors, employees or agents do not, whether expressly, tacitly or implicitly, represent, warrant or in any way guarantee the fairness, accuracy or reliability of any advice, opinion, statement, completeness or correctness of the information or other data and information and conclusions contained in, displayed on, linked to or distributed through this presentation. To the maximum extent permitted by law, neither the JSE and its respective directors, employees or agents, nor any other person accepts any liability, including, without limitation, any liability arising out of fault or negligence, for any loss arising from the use of the information contained in this presentation.
- Your interaction, correspondence or business dealings with third parties which are referred to in this presentation are entirely at your own risk and are solely between you and such third party. You are solely responsible for identifying and familiarising yourself with any terms and conditions which will govern your relationship with such third party.
- The JSE does not endorse and/or authorise any person and/or company selling software and/or training courses for and on behalf of the JSE.