

SSL/TLS CONNECTION TO BDA

21 October 2019

CONTENTS

1. Enabling SSL connection to BDA.....	3
2. Glossary	5

1. ENABLING SSL CONNECTION TO BDA

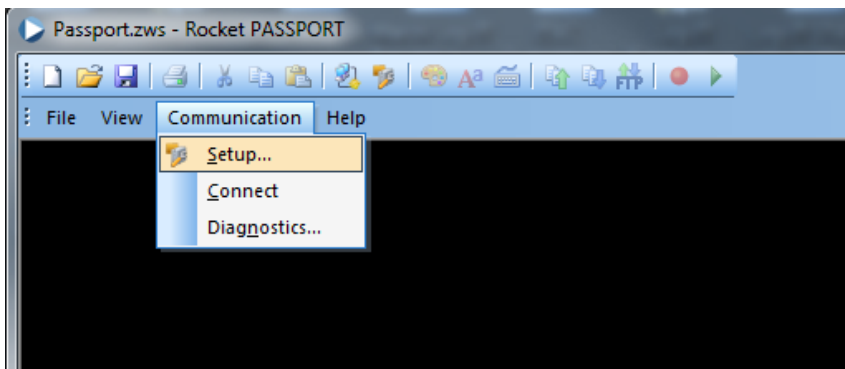
To enable SSL connection to BDA check that the 992 port is open on your network as well as at your network service providers.

Change the following configuration settings on your Mainframe emulation software:

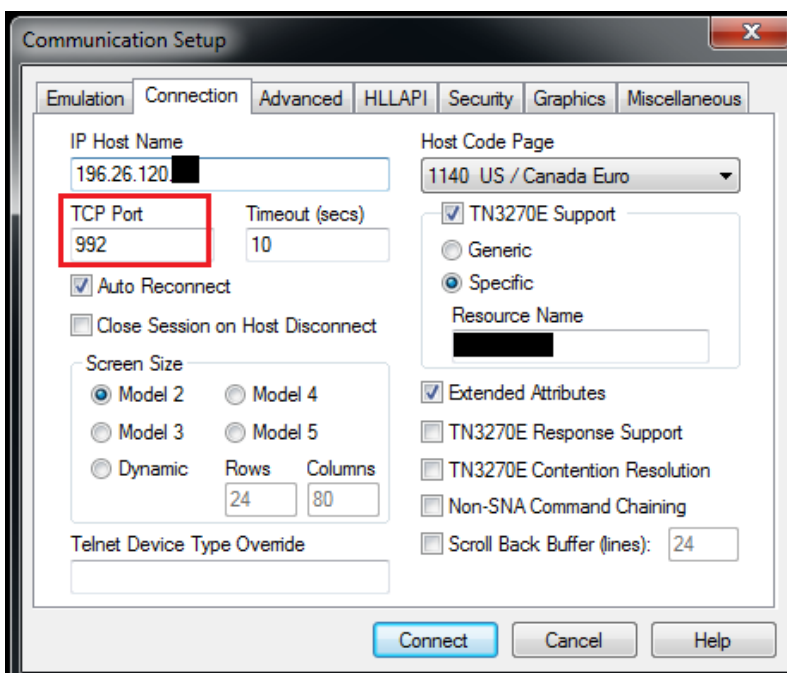
- Change the TCP port you connect to from 23 to 992 on your mainframe emulators
- Enable Secure connection through SSL/TLS
- Flag to accept Self-Signed Certificates

Below is an example of how the Setup can be done using the Rocket Passport emulator. You would need to engage with your own emulator provider should you have difficulty in changing the configuration on your emulators

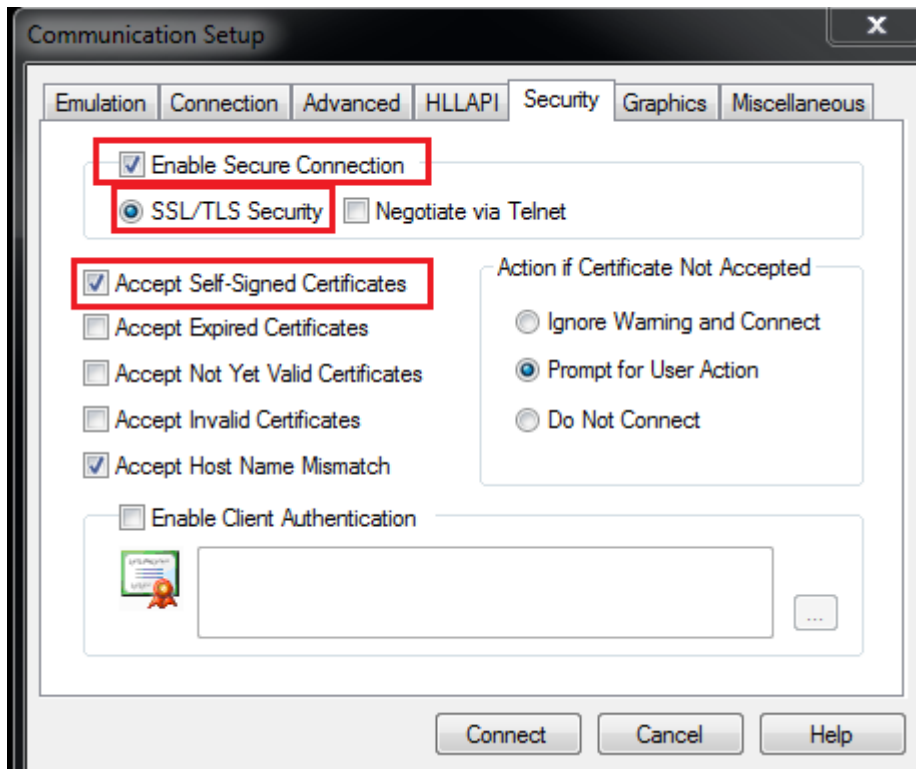
With Rocket Passport, Select the setup from the communication tab:



Change the TCP Port from 23 to 992 under the Connection Tab:



Under the security tab flag 'Enable Secure Connection' as well as 'Accept Self-Signed Certificates':



Once this is done users you can connect. The letters 'SSL' will be displayed on the bottom left of your screen to indicate that you are connecting via SSL



2. GLOSSARY

Term / Abbreviation	Definition / Expansion / Explanation
BDA	Broker Deal Accounting system
TCP	Transmission Control Protocol
SSL	Secure Sockets Layer
TSL	Transport Layer Security