

Uninstallation of BTB 1.5.1

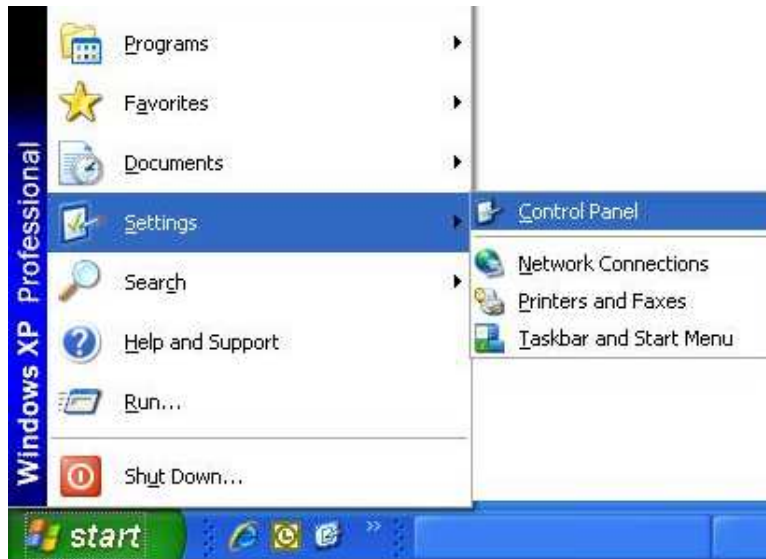
Submitted to	Client Services
Prepared by	Luqmaan Bhamjee
Date	27 May 2008
Document type	Uninstallation guide
Status	Final
Version	1

TABLE OF CONTENTS

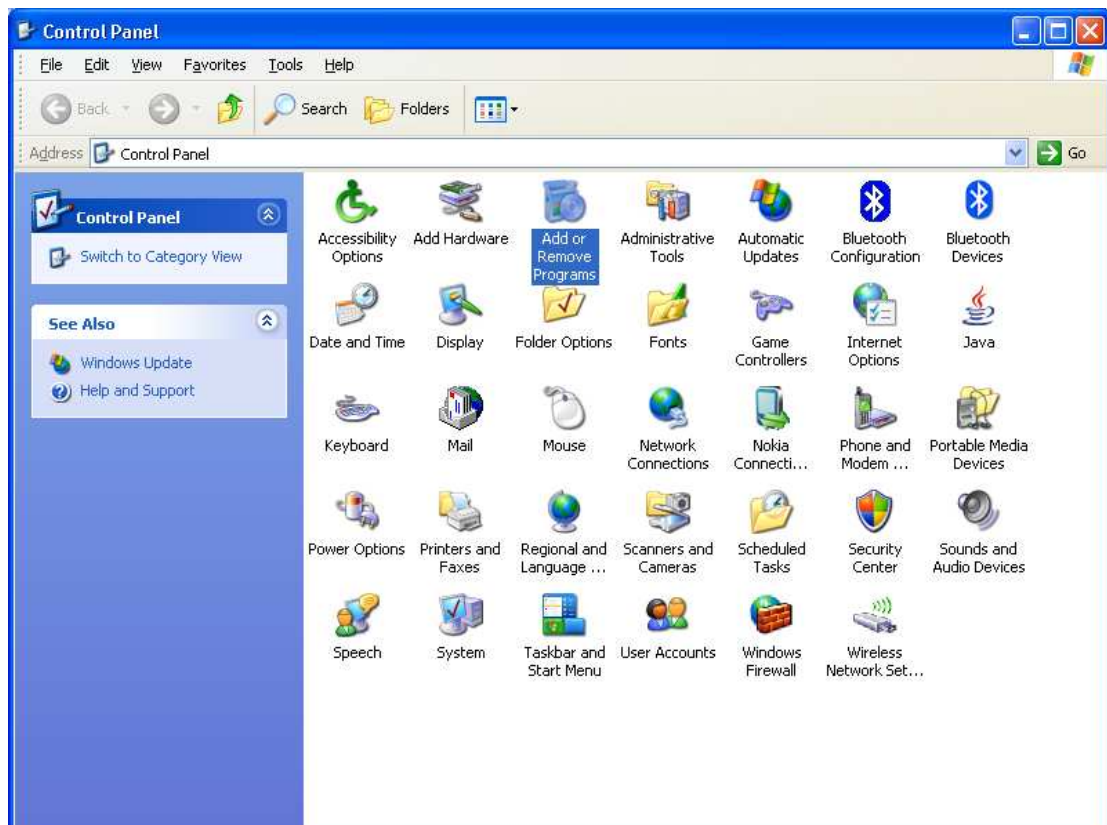
1	BTB	3
1.1	Uninstalling BTB	3
1.2	Manual Removal Of installation files.....	6

1.1 Uninstalling BTB

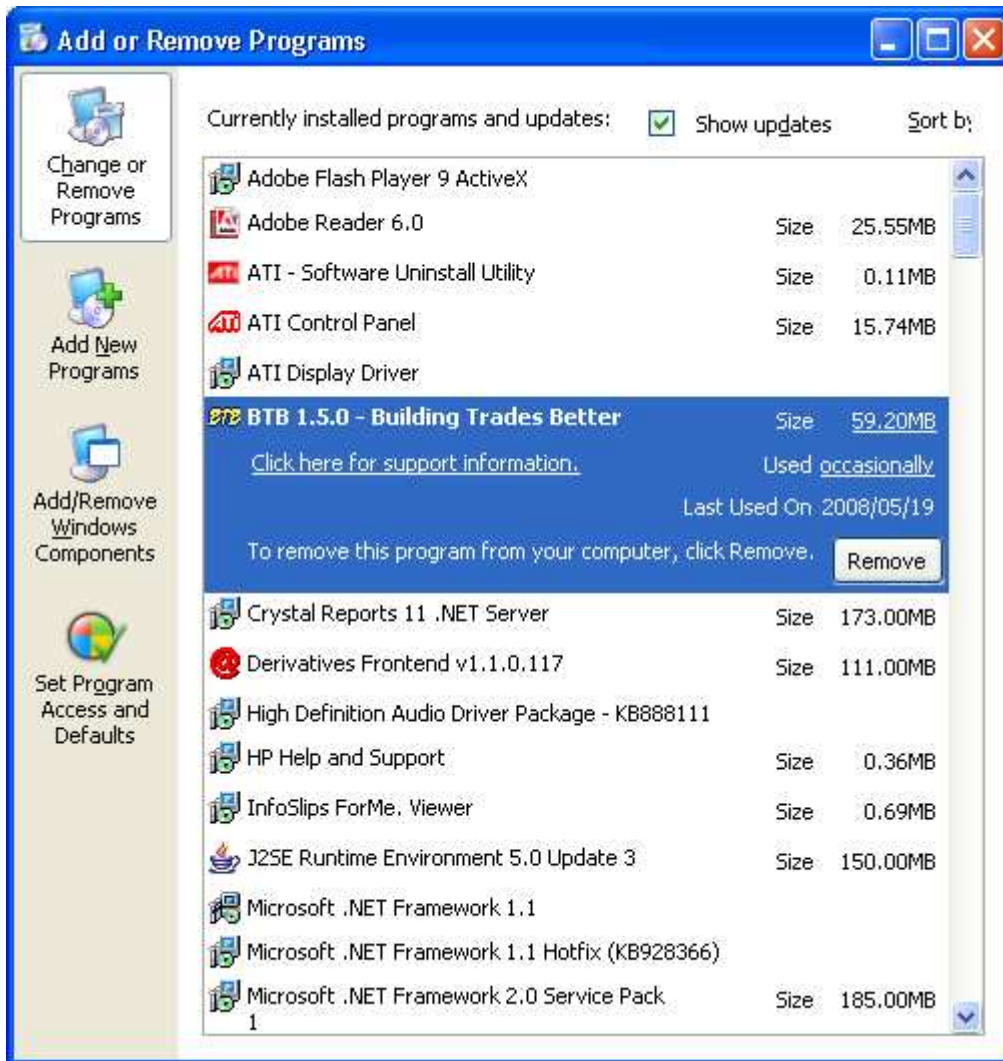
On your desktop, click on the **Start**, scroll to **Settings**, and click on **Control Panel**.



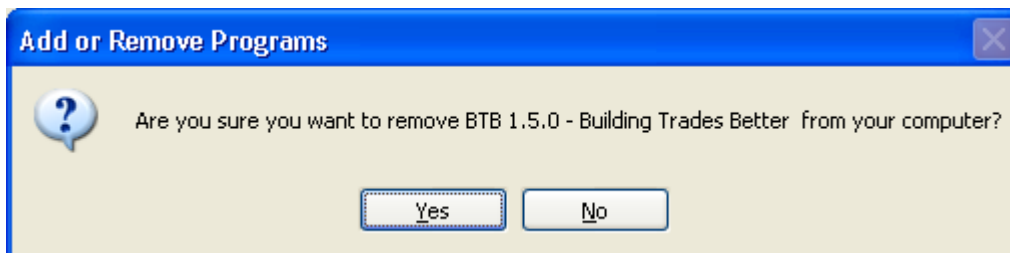
The **Control Panel** window will open. Double click on **Add or Remove Programs**.



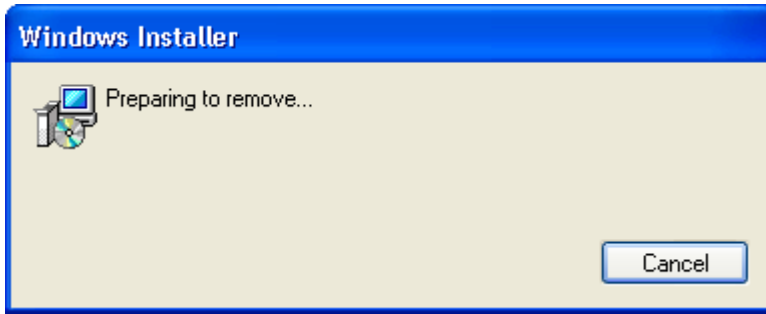
On the **Add or Remove Programs** menu scroll through the list and Select **“BTB 1.5.0–Building Trades Better”** and click on **Remove**.



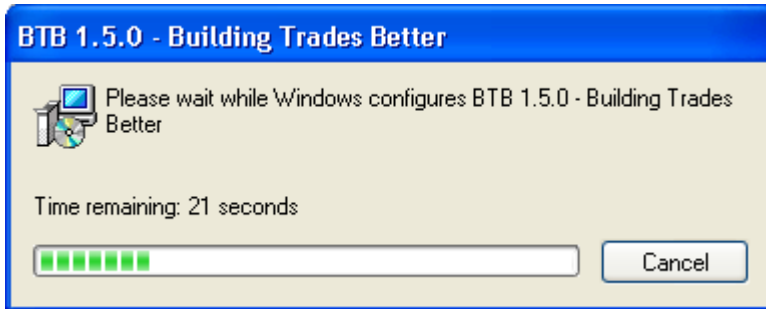
The following confirmation prompt will appear to confirm if you want to remove **“BTB 1.5.0–Building Trades Better”** from your computer, click on **Yes**.



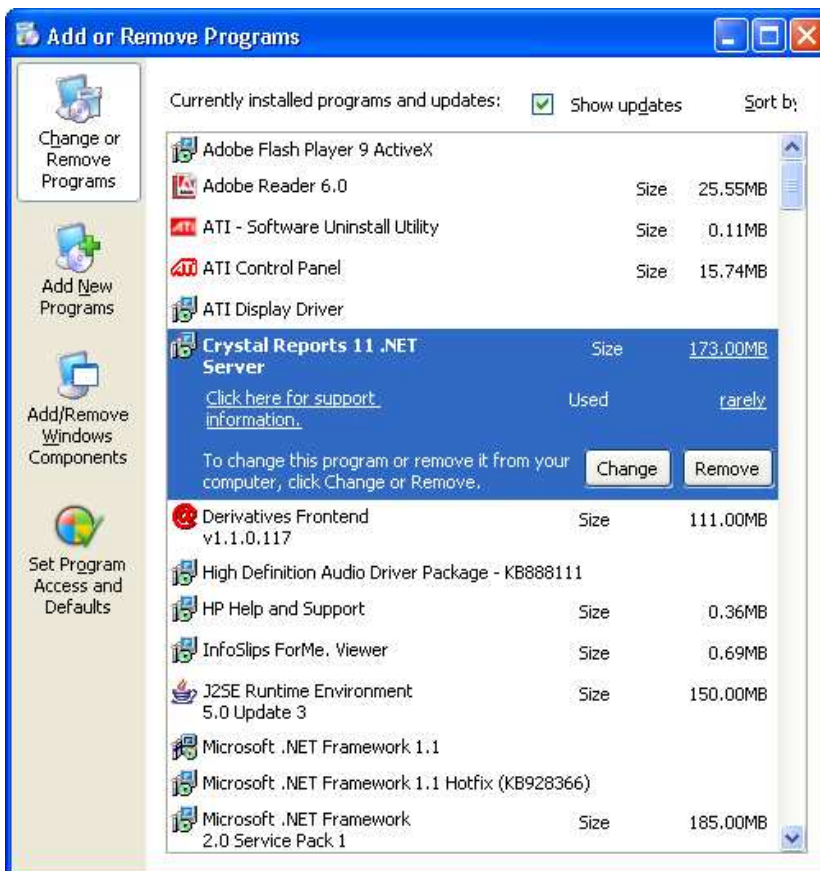
The Windows Installer window will appear with the message, **“Preparing to remove...”** with the following windows in sequence.



Once BTB has successfully been removed, the following window will disappear.



Confirm in the Add or Remove Programs list the “**BTB 1.5.0–Building Trades Better**” has been removed.



1.2 Manual Removal Of installation files

The following folders need to be manually removed in order to complete a new installation of BTB:









[C:\Program Files\Peresys\BTB FE 1.5.0](#)

[C:\Program Files\Peresys\BTBTEST FE 1.5.0](#)

The previous database files need to be manually removed:

They are located in root of the C:\ drive:

Click on Start\Search for all files and folders with mdf* and ldf* files and delete these files.

 BesaClient.mdf	8,384 KB	MDF File
 BesaUsersTest.mdf	4,096 KB	MDF File
 BesaUsers.mdf	4,096 KB	MDF File
 BesaClientTest.mdf	4,096 KB	MDF File
 BesaUsersTest_log.LDF	1,024 KB	LDF File
 BesaUsers_log.LDF	1,024 KB	LDF File
 BesaClientTest_log.LDF	1,024 KB	LDF File
 BesaClient_log.LDF	1,024 KB	LDF File