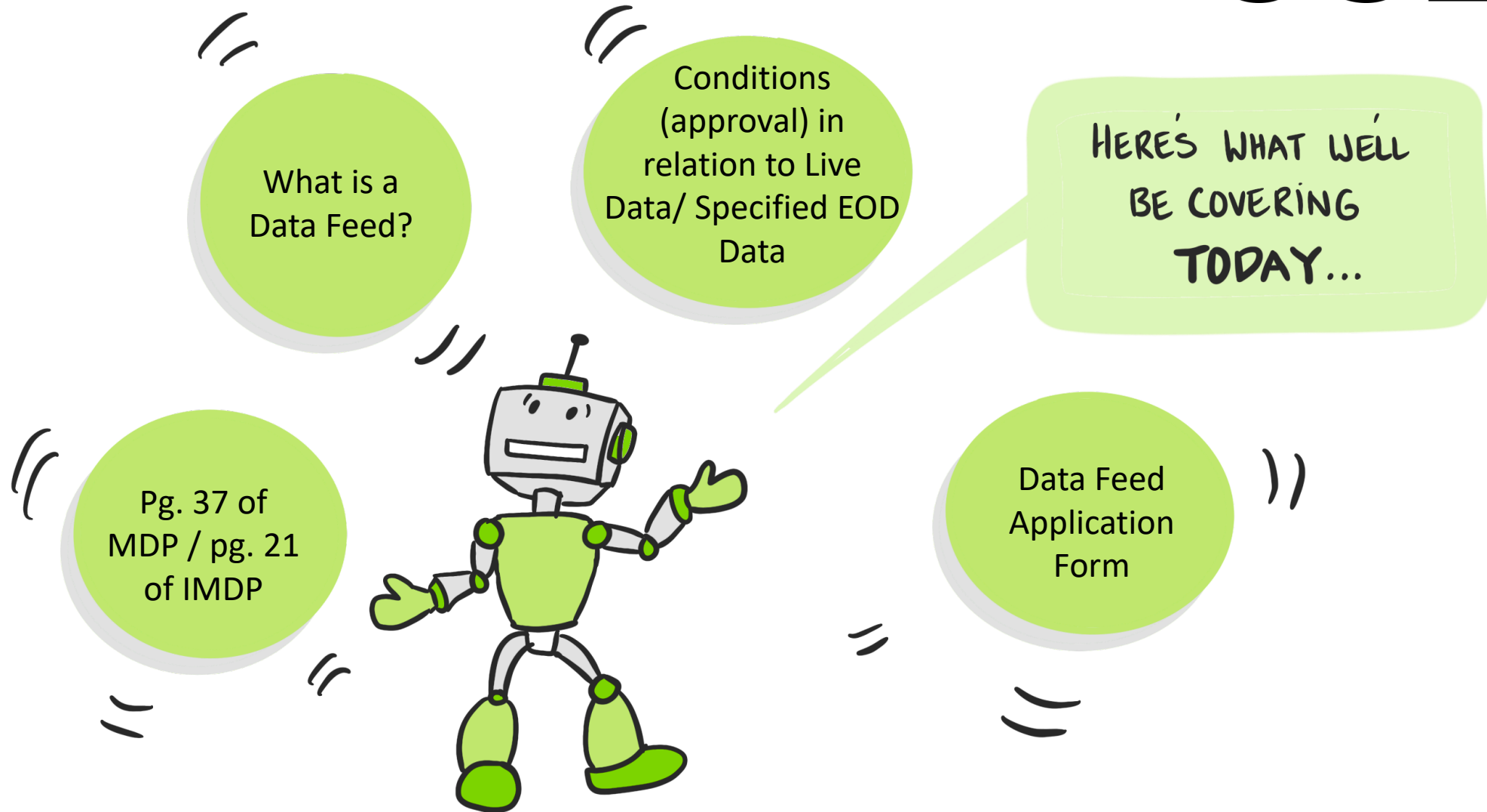


Data Feed Policy

JS

Overview

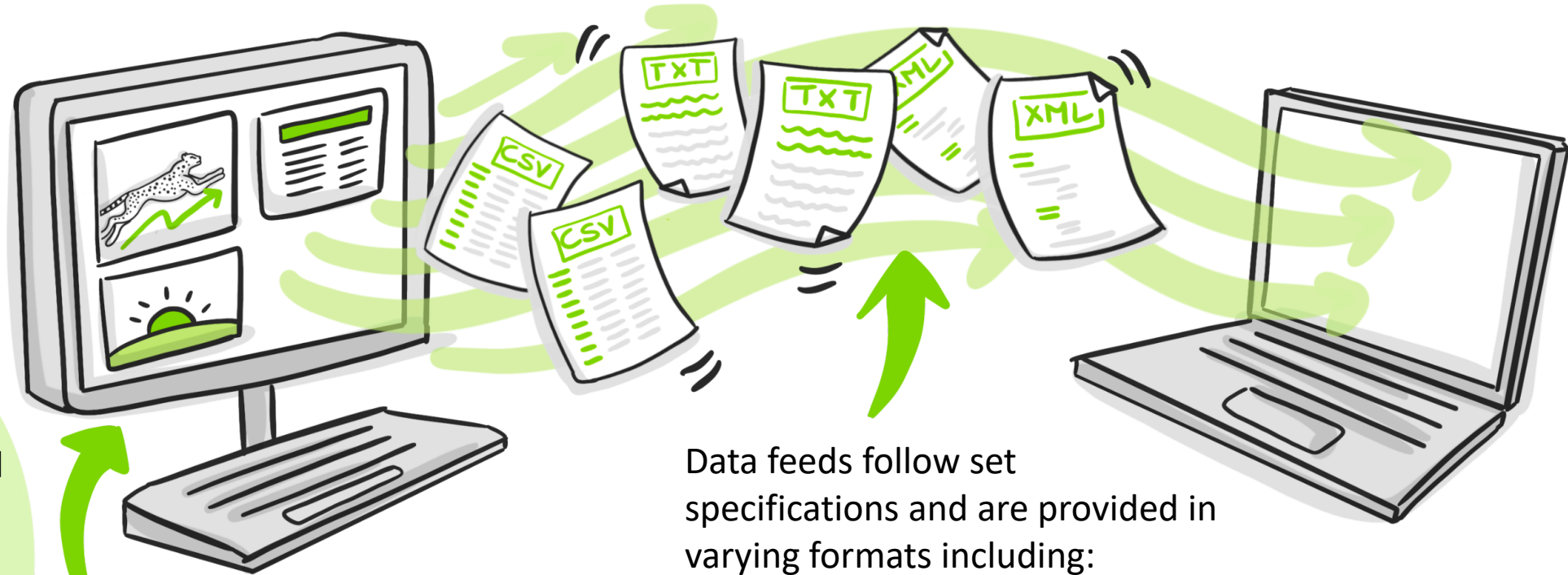
JS



What is a Data Feed?



- A Data Feed is a way of delivering structured data from one system to another.



Live, intra-day, and end of day data can be provided via data feed and includes:

- live streaming data,
- news feeds, and
- end of day files.

Data feeds follow set specifications and are provided in varying formats including:

- CSV
- plain text (txt)
- XML

Common JSE Data Feeds

JSE

SENS Headlines



ABG	DFA010120200212MainEM	JSE	C34420	ZAE000255915	Absa Group Limited	J203
ACL	DFA010120200212MainEM	JSE	C20350	ZAE000134961	ArcelorMittal South Africa Ltd	J203
ADH	DFA010120200212MainEM	JSE	C72793	ZAE000031035	Advtech	J203
AEL	DFA010120200212MainEM	JSE	C73156	ZAE000191342	Allied Electronics Corp A	J203
AFF	DFA010120200212MainEM	JSE	C01309	ZAE000000220	AECI	J203
AFH	DFA010120200212MainEM	JSE	C156926	ZAE000191516	Alexander Forbes Equity Holdings Proprietary	J203
AFT	DFA010120200212MainEM	JSE	C18251	ZAE000086302	Afrimat	J203
AFX	DFA010120200212MainEM	JSE	C01310	ZAE000067120	African Oxygen	J203
AGL	DFA010120200212MainEM	JSE	C72483	GB00B1XZS820	Anglo American	J203
AHB	DFA010120200212MainEM	JSE	C136614	ZAE000275509	Arrowhead Properties B	J203
AIL	DFA010120200212MainEM	JSE	C175115	MJ0553S00000	African Rainbow Capital Investments Ltd	J203
AIP	DFA010120200212MainEM	JSE	C110150	ZAE000123436	Adcock Ingram Holdings	J203
AMS	DFA010120200212MainEM	JSE	C01362	ZAE000013181	Anglo American Platinum	J203
ANG	DFA010120200212MainEM	JSE	C01375	ZAE000043485	Anglogold Ashanti	J203
ANH	DFA010120200212MainEM	JSE	C168901	BE0974293251	Anheuser-Busch InBev	J203
APF	DFA010120200212MainEM	JSE	C153977	ZAE000185815	Accelerate Property Fund	J203
APN	DFA010120200212MainEM	JSE	C72736	ZAE000066692	Aspen Pharmacare Holdings	J203
ARI	DFA010120200212MainEM	JSE	C20340	ZAE000054045	African Rainbow Minerals Ltd	J203
ARL	DFA010120200212MainEM	JSE	C72949	ZAE000029757	Astral Foods Ltd	J203
ASC	DFA010120200212MainEM	JSE	C152553	ZAE000185005	Ascendis Health Ltd	J203
ASR	DFA010120200212MainEM	JSE	C72928	ZAE000146932	Assore Ltd	J203
ATT	DFA010120200212MainEM	JSE	C151351	ZAE000177218	Attacq Limited	J203
AVI	DFA010120200212MainEM	JSE	C20341	ZAE000049433	AVI	J203
BAT	DFA010120200212MainEM	JSE	C72487	LU0011857645	Brait SE	J203
BAW	DFA010120200212MainEM	JSE	C01316	ZAE000026639	Barloworld	J203
BHP	DFA010120200212MainEM	JSE	C72479	GB00BH0P3Z91	BHP Group Plc	J203
BID	DFA010120200212MainEM	JSE	C170400	ZAE000216537	BidCorp Ltd	J203
BLU	DFA010120200212MainEM	JSE	C100659	ZAE000109088	Blue Label Telecoms Ltd.	J203
BRN	DFA010120200212MainEM	JSE	C72632	ZAE000015285	Brimstone Investment Corp N	J203

To see unlimited SENS history and get SENS alerts, sign up for a [MySharenet](#) subscription.

SENS Headline

Price last updated: 29 January 2020 09:44

CALGRO M3 DEVELOPMENTS LIMITED - Interest payment notifications - CGRI

ORION MINERALS LIMITED - Appendix 5B

NEDBANK LIMITED - Interest payment and capital redemption notifications - BINBK

AVIOR CAPITAL MARKETS HOLDINGS LIMITED - Trading Statement

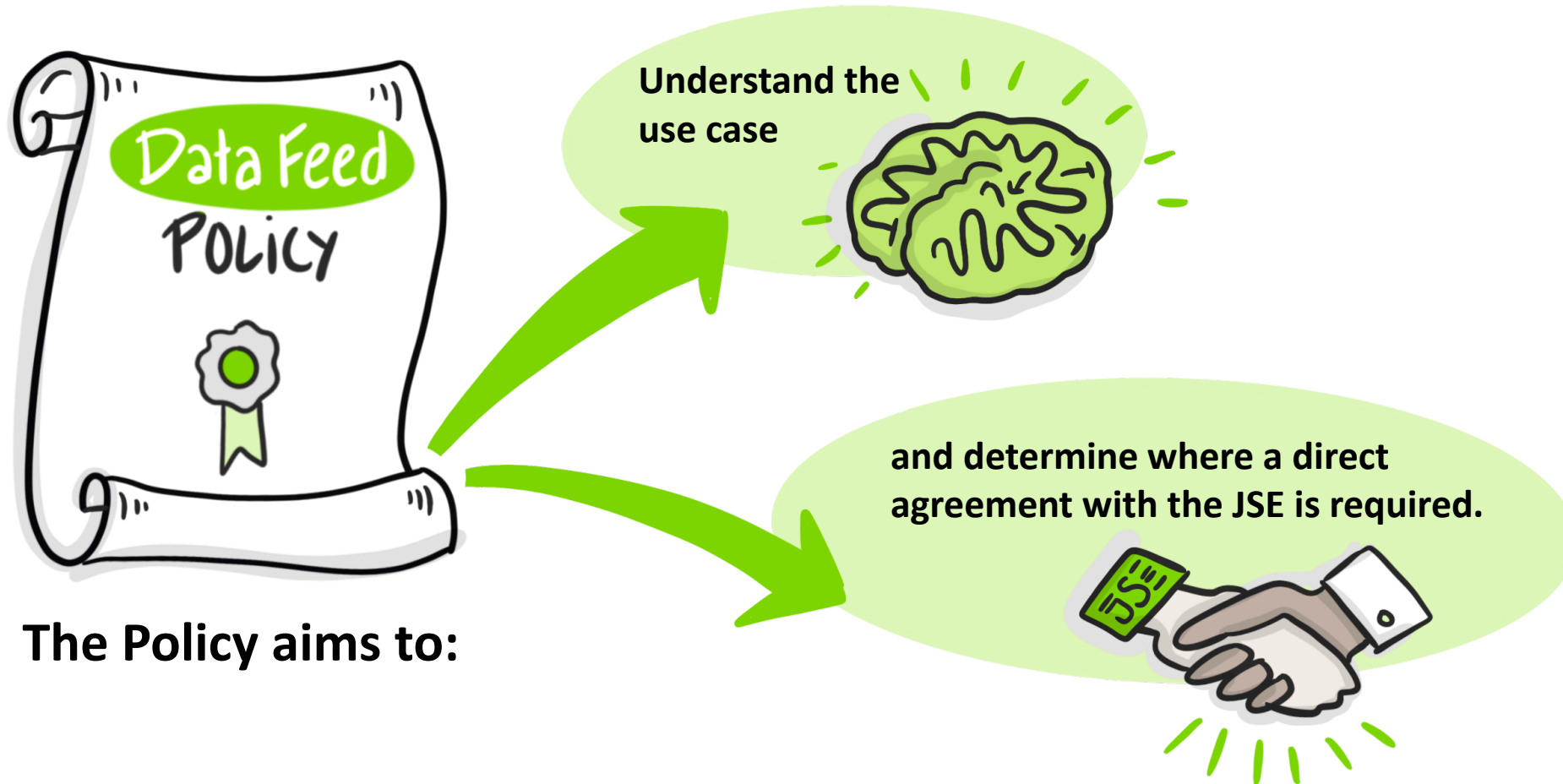
SATRIX COLLECTIVE INVESTMENT SCHEME - Partial Delisting Of Satrix Stxemg Securities - STXEMG

HERE ARE
SOME
EXAMPLES...



Data Feed policy aim

JSE



Approval Process



In relation to **Live Data**:



Approval is required **before** any Live Data is made available to a proposed *Data Feed User*.

In relation to **Specified EOD Data**:

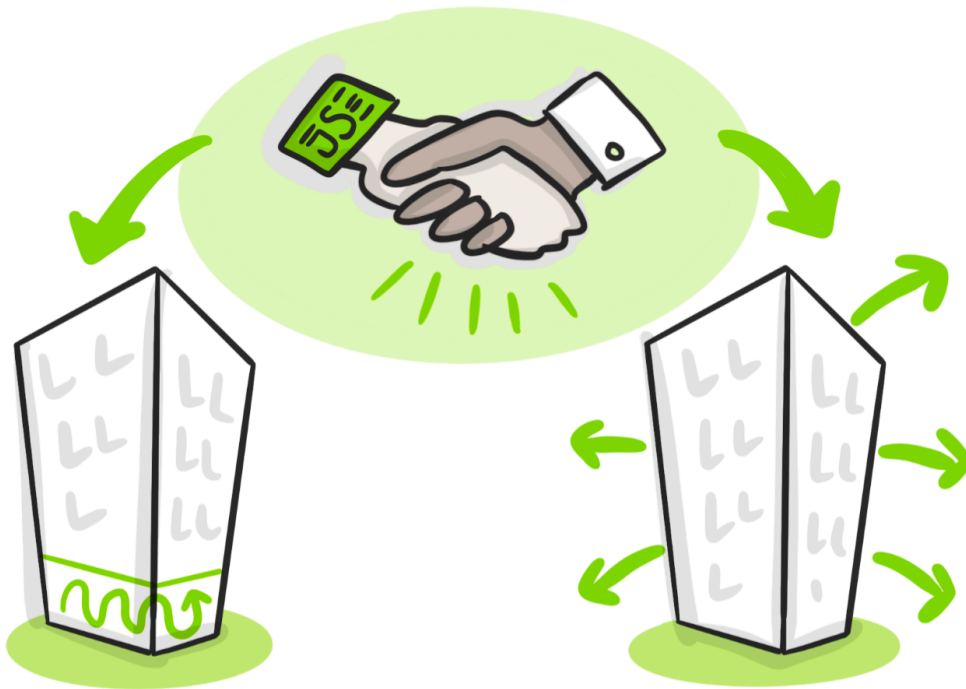


Pre-approval is not needed, however, approval is needed by no later than **10 Business Days** after the Data Feed User starts to use the Specified EOD Data

Important to note



Direct agreement with the JSE is required if:

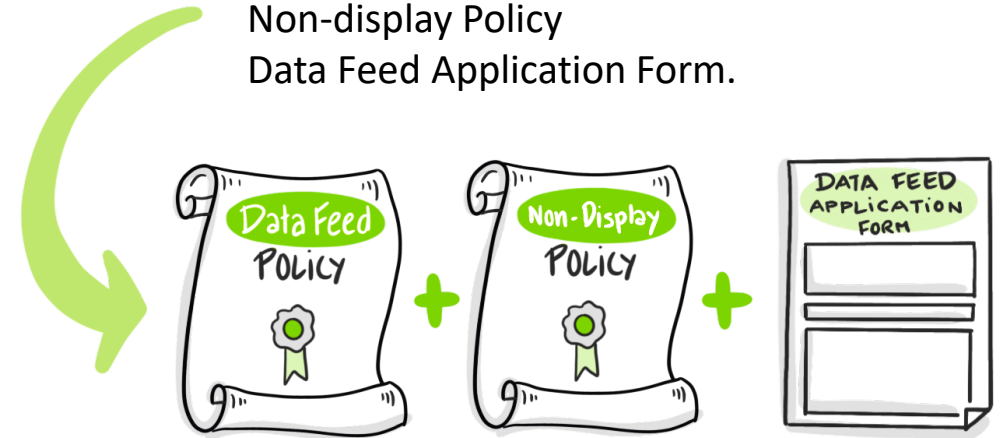


Data will be used for
Non-display purposes

Data will be used for
External distribution

**The Contracted User to furnish End User
(proposed Data Feed client) with a copy of :**

Data Feed Policy
Non-display Policy
Data Feed Application Form.



**The Data Feed form should be completed
and sent to mdsupport@jse.co.za**



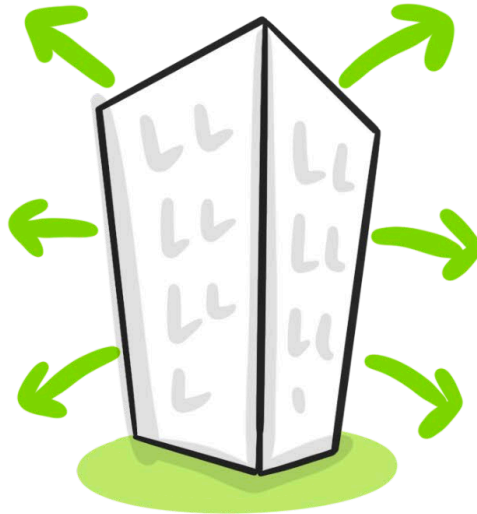
Data Feed application form

JS≡

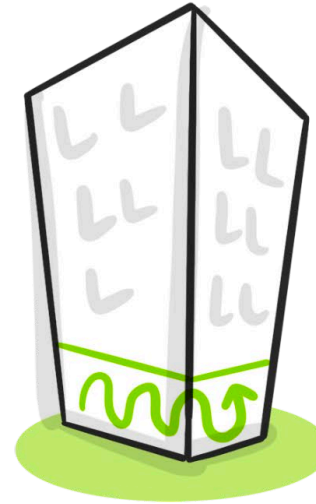
The proposed Data Feed User must clearly indicate which Data will be used and whether such Data will be used:



In relation to,
internal display use only



In relation to, **external display distribution only**



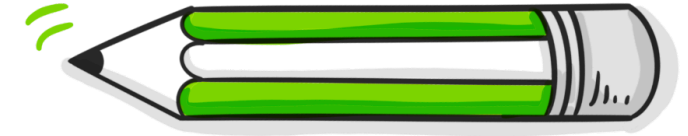
In relation to,
Non-Display Use



In a **combination** of
any of these uses.

Data Feed application form

JS



DATA FEED APPLICATION FORM	
Company Name ("Data Feed User"):	ABC Hedge Fund
Contact Name:	Joe Bloggs
Contact Telephone Number:	+44 207 555 5555
Contact Email Address:	Joe.bloggs@abchf.co.uk
Address:	3 Queen Victoria Street
	London
	EC4N 4TQ
Country:	United Kingdom

Data Feed User information

1. Source of Data Feed	Bloomberg / Refinitiv / IRESS etc.

Data Feed Provider information

2. DATA TYPE DETAILS	Live	End of Day
Equities	<input checked="" type="checkbox"/> Level 1 <input type="checkbox"/> Level 2	<input type="checkbox"/>
Equity Derivatives	<input checked="" type="checkbox"/>	
Commodity Derivatives	<input type="checkbox"/>	
Currency Derivatives	<input type="checkbox"/>	
Interest Rate		<input type="checkbox"/>
Indices	<input checked="" type="checkbox"/>	
SENS	<input type="checkbox"/>	

Data Type + Frequency

Note 1: One or more may be selected.

Data Feed application form

Definition: Non-Display
policy - clause 21.3.5 + 21.3.6

JSE

3. DATA USE DETAILS		List the data type that will be used per data use	Number of Units
Internal Display Use	<input checked="" type="checkbox"/>	Live Equity Derivatives	44 terminals
External Display Distribution	<input type="checkbox"/>		
Non-Display Use	<input checked="" type="checkbox"/>	Live Level 2 Equities+Live Indices	3 ND Units

Note 2: One or more may be selected. Refer to the Data Feed Policy to assess the correct classification of use.

4. Explain clearly the permissioning controls that will be put in place
DACS / MDMS / EMRS / XYZ Enablement/Control / Permissioning system etc.

5. Where "Non-Display Use" is selected in 2 above, please explain clearly the nature/type of Non-Display Use and the extent of such use by the Data Feed User (and any Group Company)
Algorithmic trading. Risk management. Index Arbitrage.

We hereby represent and warrant that (i) the information contained in this Data Feed Application Form is true and correct in all respects as at the date of signature and (ii) we have been provided with a copy of the JSE's Data Feed Policy and the JSE's Non-Display Policy].

The above representations and warranties are acknowledgements of fact by the party which completes and provides this Data Feed Application Form to the JSE (that is the proposed Data Feed User). The proposed Data Feed User must read the above carefully and make sure that each statement is true and correct as the proposed Data Feed User's right to claim that any statement is not true and correct will be limited. The JSE may also have claims and other rights against the proposed Data Feed User if any statement is not true and correct.

Signed at _____ on _____ 20____

For the Data Feed User, duly authorised _____ full name and designation of signatory

Data Use details

Permissioning Systems

Detail related to Non-Display Usage

T&C's + Warranties

Date + Signature

