

JUNE'S HIGHLIGHTS

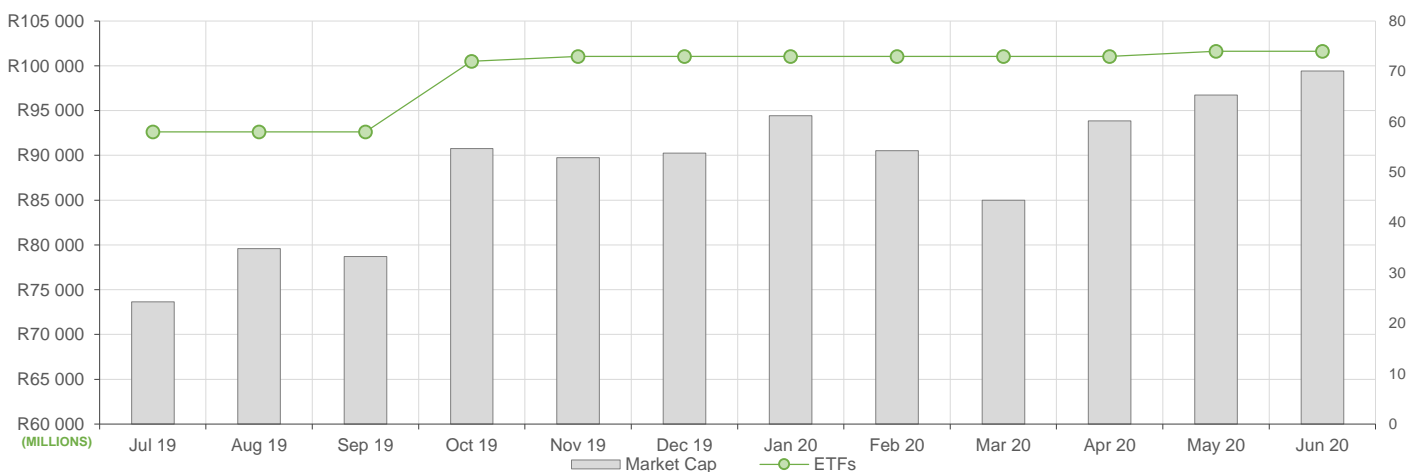
June reflected similar ETF activity compared to April and May, here is what we have seen:

- ETF Market Capitalization once again increased marginally month-on-month by 3%, nearly breaching the R100bn mark. The increase was driven largely by positive price movements across most of the different asset classes and creations across commodity ETFs.
- ETF unit redemptions were apparent in mostly offshore equity ETFs.
- Month on month ETF value traded was similar to May's activity, delivering nearly R10bn in value traded during the month. Much of June's value traded activity was attributable to an interest in gold and platinum ETFs. On a month-on-month comparison basis, the value traded in Top 40 ETFs was nearly double compared to the previous month's value traded – showing the greatest month-on-month increase in value traded across all the ETFs.
- Month on Month ETF returns showed positive performance across property, local equity and Top 40 ETFs.

NEW LISTINGS AND DELISTINGS

ETF	CODE	ISSUER	EVENT	DATE
--	--	--	--	--

MARKET CAPITALISATION ANALYSIS | Total Industry



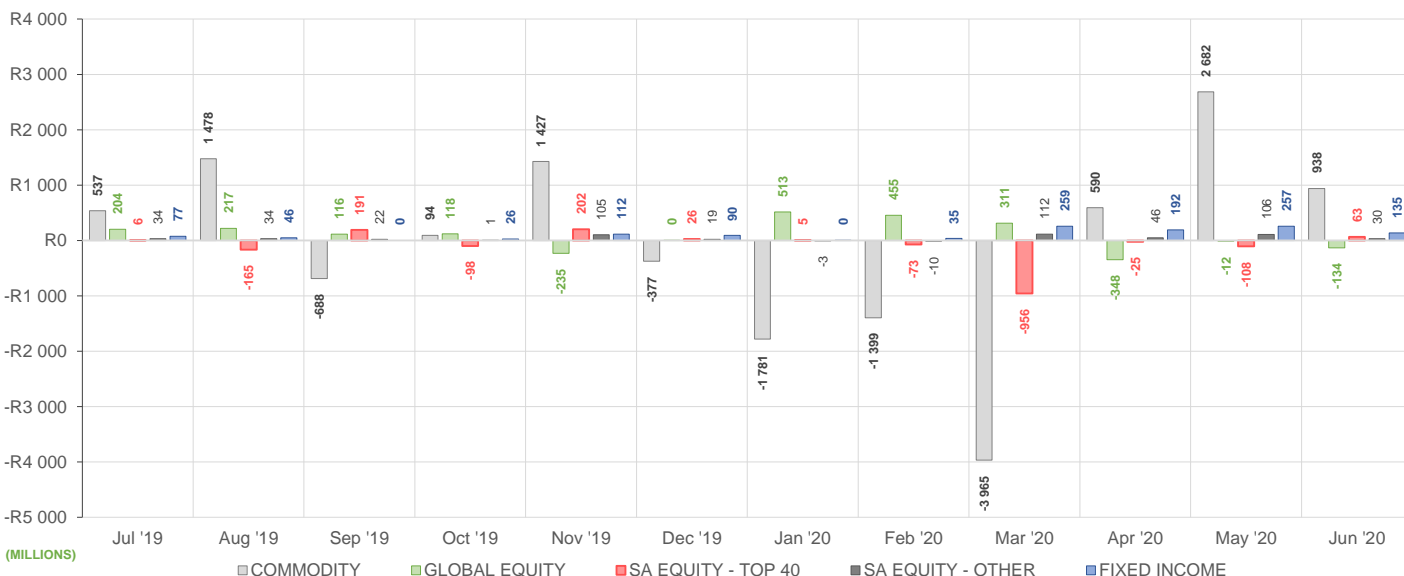
NET DAILY EXCHANGE CREATIONS AND REDEMPTIONS | Top & Bottom Five ETFs

TOP 5 INSTRUMENTS	CODE	TOTAL DAILY CREATIONS	TOTAL DAILY REDEMPTIONS	NET MONTHLY CREATIONS
1invest Rhodium	ETFRHO	R679 709 850	---	R679 709 850
NewGold	GLD	R1 242 040 000	-R768 927 000	R473 113 000
NewPlatinum	NGPLT	R230 471 500	-R110 335 000	R120 136 500
NewFunds GOVI	NFGOVI	R104 890 000	---	R104 890 000
Sygnia Itrix MSCI World	SYGWD	R103 035 864	---	R103 035 864

BOTTOM 5 INSTRUMENTS	CODE	TOTAL DAILY CREATIONS	TOTAL DAILY REDEMPTIONS	NET MONTHLY CREATIONS
Satrix MSCI World Feeder	STXWDM	R10 215 000	-R81 111 000	-R70 896 000
Sygnia Itrix MSCI US	SYGUS	---	-R90 918 650	-R90 918 650
NewPalladium	NGPLD	---	-R126 446 000	-R126 446 000
Sygnia Itrix EUROSTOXX50	SYGEU	---	-R267 655 936	-R267 655 936
1invest Platinum	ETFPLT	---	-R272 138 250	-R272 138 250

Considers the daily update to total number of issued units listed on the exchange over the calendar month, with Creations representing a day-on-day increase in total number of listed units, and Redemptions representing a decrease. An average day-on-day price is used to estimate the ZAR value of each net daily movement. No secondary market transactions are considered.

NET MONTHLY EXCHANGE CREATIONS AND REDEMPTIONS



MONTHLY ETF PERFORMANCE | Top & Bottom Five ETFs

TOP 5 INSTRUMENTS	CODE	TOTAL RETURN	VOLATILITY	MAX DRAW DOWN
1invest SA Property	ETFSAP	14.32%	113.61%	-57.67%
CoreShares SA Property	CSPROP	13.38%	13.00%	-11.97%
Satrix Property	STXPRO	12.73%	13.11%	-12.03%
Satrix RESI	STXRES	8.49%	8.49%	-5.40%
NewFunds Equity Value	NFEVAL	8.32%	11.27%	-8.65%

BOTTOM 5 INSTRUMENTS	CODE	TOTAL RETURN	VOLATILITY	MAX DRAW DOWN
Satrix ILBI	STXILB	-2.10%	3.11%	-4.48%
Cloud Atlas AMI RealEstate ex-SA	AMIRE	-2.25%	25.81%	-13.08%
NewPlatinum	NGPLT	-2.49%	9.02%	-8.68%
1invest Platinum	ETFPLT	-2.91%	8.48%	-9.64%
1invest Rhodium	ETFRHO	-24.54%	20.59%	-27.94%

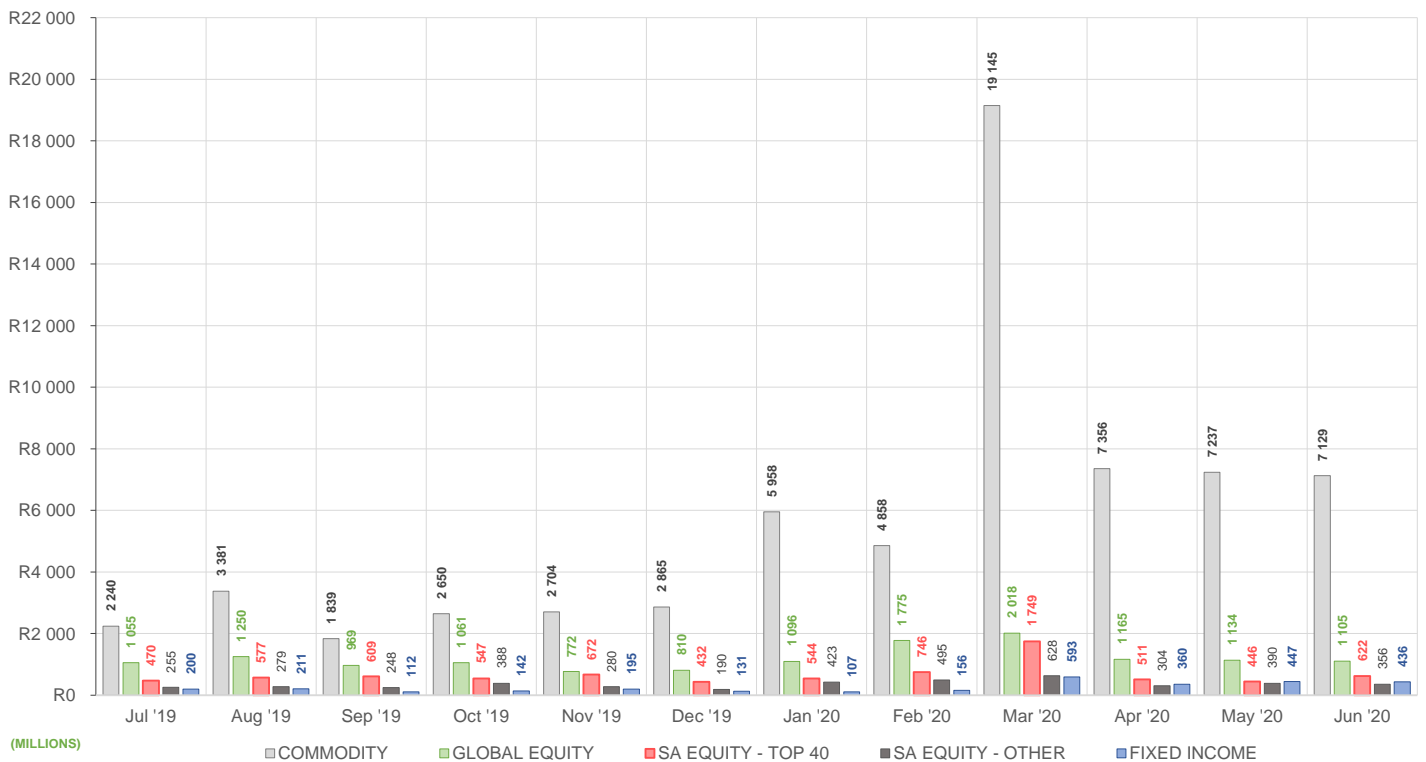
ROLLING 12-MONTH ETF PERFORMANCE | Top & Bottom Five ETFs

TOP 5 INSTRUMENTS	CODE	TOTAL RETURN	VOLATILITY	MAX DRAW DOWN
1invest Rhodium	ETFRHO	66.41%	90.77%	-68.28%
Satrix Nasdaq 100	STXNDQ	61.66%	24.71%	-17.91%
NewGold	GLD	54.93%	22.41%	-14.48%
KR Custodial Certificate	KCCGLD	54.37%	168.98%	-52.92%
NewPalladium	NGPLD	52.36%	47.03%	-37.18%

BOTTOM 5 INSTRUMENTS	CODE	TOTAL RETURN	VOLATILITY	MAX DRAW DOWN
Cloud Atlas AMI RealEstate ex-SA	AMIRE	-31.51%	92.39%	-49.60%
Satrix FINI	STXFIN	-37.16%	39.01%	-52.84%
1invest SA Property	ETFSAP	-37.96%	130.37%	-59.84%
CoreShares SA Property	CSPROP	-39.65%	36.99%	-58.99%
Satrix Property	STXPRO	-44.58%	41.14%	-60.32%

Total Return is the monthly/annual performance incorporating price performance and immediate reinvestment of dividends. Volatility is the based on daily price standard deviation and presented as a monthly/annual volatility. Maximum draw down measures the worst case return outcome for an investor over the course of the period – based on purchase and subsequent sale timing that results in the largest loss of capital.

MONTHLY VALUE TRADED FOR ALL ETFs



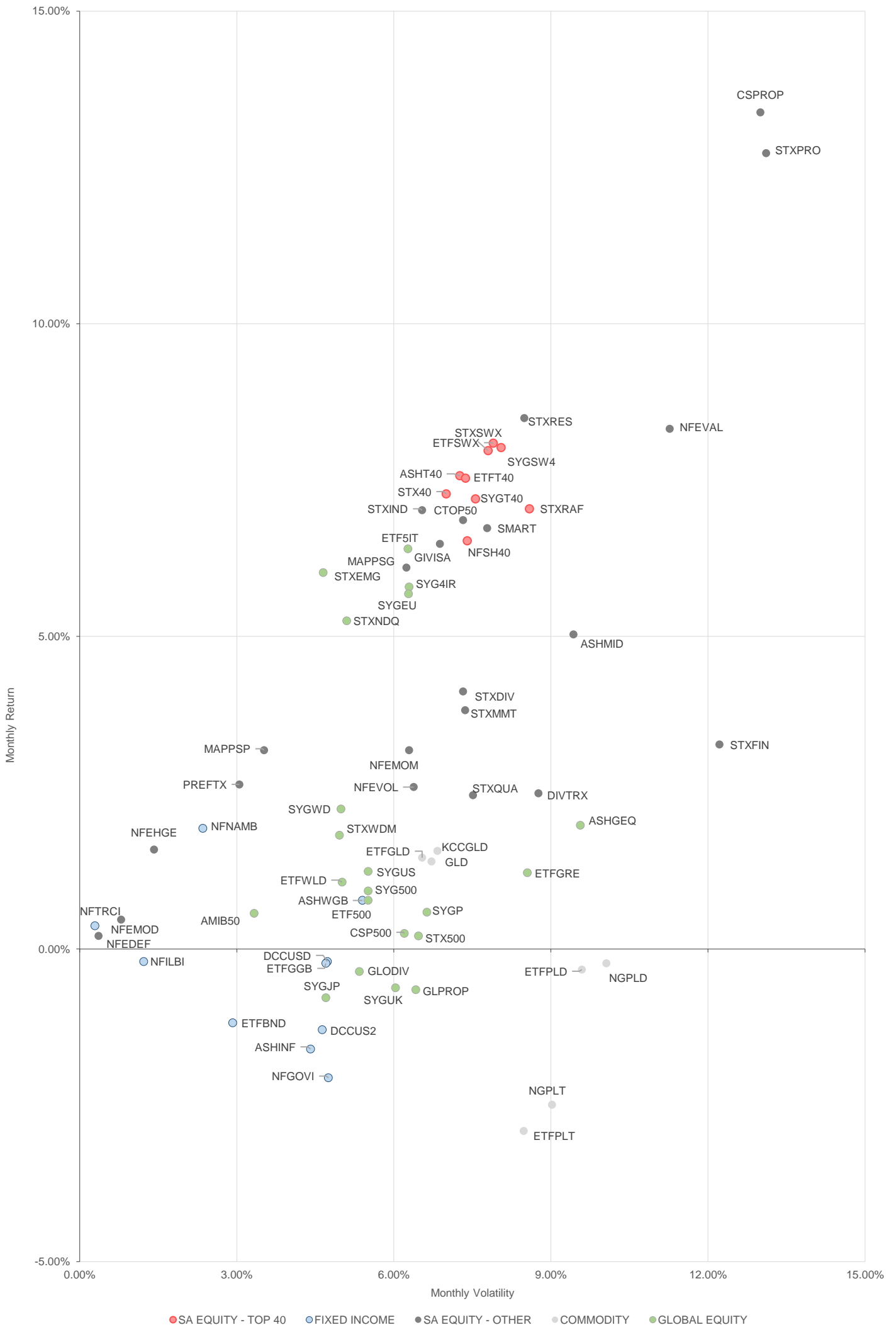
MONTHLY ETF TRADE STATISTICS | Top & Bottom Five Funds

TOP 5 INSTRUMENTS	CODE	VOLUME	VALUE	TRADES	LIQUIDITY
NewGold	GLD	17 576 316	R4 853 216 653.00	9 983	22.54%
NewPlatinum	NGPLT	13 891 265	R1 896 854 898.00	3 904	19.51%
Satrix 40	STX40	10 420 735	R516 769 062.20	3 815	6.42%
NewFunds VM High Growth	NFEHGE	6 119 078	R51 093 773.54	48	82.97%
Satrix DIVI	STXDIV	10 256 324	R21 145 068.61	620	1.61%

BOTTOM 5 INSTRUMENTS	CODE	VOLUME	VALUE	TRADES	LIQUIDITY
Dollar Custodial Certificate	DCCUSD	8 379	R15 671 037.30	63	9.86%
KR Custodial Certificate	KCCGLD	279	R8 404 507.51	29	0.89%
2YR Dollar Custodial Certificate	DCCUS2	2 676	R4 614 308.58	91	3.52%
1invest S&P 500	ETF500	9 486	R2 524 327.93	197	6.12%
Cloud Atlas AMI RealEstate ex-SA	AMIRE	873	R24 077.49	29	3.12%

Volume, Value and Trades are the aggregate counts of all trade activity in the ETF for the month on the JSE equity market. This includes central order book and reported trades, but excludes creations and redemptions. Liquidity is the total volume traded expressed as a percentage of the number of listed instruments for the ETF as at the end of the month.

TOTAL RETURN VERSUS VOLATILITY



● SA EQUITY - TOP 40 ● FIXED INCOME ● SA EQUITY - OTHER ● COMMODITY ● GLOBAL EQUITY

MONTHLY DETAILED ETF INFORMATION

SA EQUITY | TOP 40

Prices in Rands | In Rands | Values in Mn's | in 000's | in Mn's |

INVEST	CODE	START	LOW	HIGH	END	1M %	DISTRIBUTION	MCAP OPEN	MCAP CLOSE	VOL	VALUE	TRADES
Invest SWIX 40	ETFSWX	9.73	9.90	10.71	10.42	7.09	--	1703.64	1824.45	0.01	0.12	50.00
Invest Top 40	ETFT40	47.23	48.00	51.62	50.38	6.67	--	616.15	657.24	0.04	1.74	150.00
ASHBURTON												
Ashburton Top 40	ASHT40	47.37	47.00	51.99	50.57	6.76	--	1200.28	1281.36	0.77	38.26	363.00
SATRIX MANAGERS												
Satrix 40	STX40	47.32	47.75	51.75	50.38	6.47	--	7632.34	8176.27	9.97	495.41	3564.00
Satrix SWIX Top 40	STXSWX	9.74	9.80	10.99	10.43	7.08	--	320.62	355.85	1.47	15.24	152.00
SYGNIA ITRIX												
Sygnia Itrix SWIX 40	SYGSW4	9.81	10.00	10.79	10.51	7.14	--	205.93	220.62	0.24	2.44	67.00
Sygnia Itrix Top 40	SYGT40	47.99	48.48	52.27	51.08	6.44	--	256.74	273.27	0.24	12.31	90.00

SA EQUITY | OTHER

Prices in Rands | In Rands | Values in Mn's | in 000's | in Mn's |

INVEST	CODE	START	LOW	HIGH	END	1M %	DISTRIBUTION	MCAP OPEN	MCAP CLOSE	VOL	VALUE	TRADES
Invest SA Property	ETFSAP	23.82	25.00	63.00	27.07	13.64	--	160.26	185.10	0.27	7.58	231.00
ASHBURTON												
Ashburton Mid Cap	ASHMID	5.40	5.36	6.19	5.64	4.44	--	313.20	327.12	1.20	6.86	335.00
COESHARES												
CoreShares DivTrax	DIVTRX	19.75	20.00	22.23	20.15	2.03	--	212.44	216.74	0.63	13.34	202.00
CoreShares Top 50	CTOP50	20.39	20.76	22.38	21.65	6.18	--	1369.88	1475.10	0.80	17.37	224.00
CoreShares SciBeta M-FI	SMART	35.67	36.70	39.40	37.76	5.86	--	100.06	102.15	0.14	5.31	109.00
CoreShares PrefTrax	PREFTX	7.24	7.15	7.75	7.42	2.49	--	284.75	291.83	0.57	4.18	201.00
CoreShares SA Property	CSPROP	7.71	7.81	9.88	8.56	11.02	--	189.83	205.62	1.81	16.05	359.00
ABSA NEWFUNDS												
NewFunds Equity Momentum	NFEMOM	32.58	32.14	34.09	33.43	2.61	--	244.03	283.83	0.99	33.19	131.00
NewFunds MAPPs Growth	MAPPSP	20.47	20.47	21.95	21.58	5.42	--	36.98	38.99	0.09	1.95	67.00
NewFunds MAPPs Protect	MAPPSP	36.72	36.71	38.33	37.68	2.61	--	40.71	41.78	0.10	3.74	72.00
NewFunds S&P GIVI SA Top 50	GIVISA	34.41	34.65	37.20	36.33	5.58	--	70.79	74.74	0.06	2.23	76.00
NewFunds Shari'ah	NFSH40	2.93	2.80	3.22	3.10	5.80	--	45.64	48.28	0.13	0.41	67.00
NewFunds Equity Value	NFEVAL	6.74	6.80	8.05	7.29	8.16	--	84.37	91.26	0.29	2.17	48.00
NewFunds Low Volatility	NFEVOL	8.09	8.18	8.66	8.31	2.72	--	98.31	100.98	0.09	0.73	50.00
NewFunds VM Def Equity	NFEDEF	9.41	9.19	9.46	9.43	0.21	--	48.78	48.88	0.11	1.06	22.00
NewFunds VM High Growth	NFEHGE	8.20	8.00	8.40	8.33	1.59	--	60.48	61.43	6.12	51.08	46.00
NewFunds VM Mod Equity	NFEMOD	8.53	8.50	8.60	8.56	0.35	--	47.46	47.63	0.04	0.33	22.00
SATRIX MANAGERS												
Satrix DIVI	STXDIV	1.95	1.95	2.15	2.02	3.59	--	1256.56	1285.51	9.92	20.50	578.00
Satrix FINI	STXFIN	10.04	10.10	11.93	10.41	3.69	--	531.49	544.83	3.76	41.05	925.00
Satrix INDI	STXIND	67.64	62.60	73.98	71.61	5.87	--	1720.66	1810.91	0.38	26.63	382.00
Satrix Momentum	STXMMT	8.90	8.97	9.80	9.24	3.82	--	24.99	25.94	0.08	0.73	58.00
Satrix Property	STXPRO	7.25	7.30	9.40	7.97	9.93	--	159.29	175.11	4.82	39.30	808.00
Satrix Quality SA	STXQUA	6.89	6.90	7.70	7.07	2.61	--	100.85	103.48	0.15	1.07	74.00
Satrix RAFI 40	STXRAF	12.02	12.00	13.90	12.78	6.32	--	777.42	826.58	1.30	16.69	269.00
Satrix RESI	STXRES	48.43	48.00	53.00	52.01	7.39	--	459.50	540.28	1.07	55.73	343.00

GLOBAL EQUITY

Prices in Rands | In Rands | Values in Mn's | in 000's | in Mn's |

INVEST	CODE	START	LOW	HIGH	END	1M %	DISTRIBUTION	MCAP OPEN	MCAP CLOSE	VOL	VALUE	TRADES
Invest Global REIT	ETFGRE	17.94	17.61	20.14	18.22	1.56	--	103.14	104.75	0.15	2.86	196.00
Invest MSCI World	ETFWLD	50.72	48.89	52.69	51.20	0.95	--	97.23	99.17	0.04	2.29	112.00
Invest S&P 500	ETF500	265.39	250.08	274.99	266.28	0.34	--	39.79	41.25	0.01	2.47	187.00
Invest S&P 500 IT	ETF5IT	10.66	10.00	11.59	11.31	6.10	--	277.15	279.35	3.87	42.02	907.00
ASHBURTON												
Ashburton Global Equity	ASHGEQ	54.57	53.00	61.99	55.67	2.02	--	702.81	736.46	1.11	61.90	730.00
CLOUD ATLAS												
Cloud Atlas AMI Big50 ex-SA	AMIB50	12.08	11.80	15.50	12.30	1.82	--	24.56	25.00	0.03	0.40	79.00
Cloud Atlas AMI RealEstate ex-SA	AMIRE	27.47	23.83	29.09	25.58	-6.88	--	0.77	0.72	0.00	0.02	29.00
COESHARES												
CoreShares Global Property	GLPROP	38.81	37.80	40.51	38.23	-1.49	--	461.03	417.82	0.56	21.84	314.00
CoreShares Global DivTrax	GLODIV	14.19	13.62	14.60	14.02	-1.20	--	660.89	652.97	2.94	41.49	638.00
CoreShares S&P 500	CSP500	53.16	51.00	54.76	53.17	0.02	--	1097.25	1097.46	0.61	32.49	610.00
SATRIX MANAGERS												
Satrix MSCI Emerging Markets	STXEMG	44.83	44.40	49.00	46.81	4.42	--	850.55	916.20	1.47	68.04	647.00
Satrix MSCI World Feeder	STXWDM	50.42	49.26	52.89	51.39	1.92	--	3210.25	3236.04	1.53	78.41	917.00
Satrix Nasdaq 100	STXNDQ	93.60	91.01	100.20	98.16	4.87	--	1265.56	1405.74	1.05	100.53	1425.00
Satrix S&P 500 Feeder	STX500	53.08	50.73	55.14	53.28	0.38	--	1123.92	1149.47	1.33	70.91	806.00
SYGNIA ITRIX												
Sygnia Itrix 4th Industrial Rev	SYG4IR	33.19	32.00	35.29	34.52	0.38	--	732.11	827.03	2.14	72.75	984.00
Sygnia Itrix EUROSTOXX50	SYGEU	60.18	59.67	67.80	63.29	5.17	--	2633.61	2497.15	0.61	38.47	702.00
Sygnia Itrix FTSE 100	SYGUK	134.90	130.00	140.00	133.25	-1.22	--	817.49	807.50	0.09	12.53	297.00
Sygnia Itrix Global Property	SYGPF	40.85	40.00	44.21	40.75	-0.24	--	273.00	272.33	0.36	15.02	346.00
Sygnia Itrix MSCI Japan	SYGJP	15.32	14.82	15.70	15.21	-0.72	--	770.16	764.63	0.63	9.54	273.00
Sygnia Itrix MSCI US	SYGUS	50.07	48.00	51.75	50.43	0.72	--	5638.08	5587.34	2.02	101.49	1097.00
Sygnia Itrix MSCI World	SYGWD	37.72	36.64	40.00	38.41	1.83	--	8983.85	9251.34	4.97	189.75	1719.00
Sygnia Itrix S&P 500	SYG500	53.67	51.72	55.54	54.03	0.67	--	1482.42	1524.78	1.11	59.84	476.00

MONTHLY DETAILED ETF INFORMATION

COMMODITIES

INVEST	CODE	Prices in Rands				1M %	DISTRIBUTION	Values in Mn's		in 000's in Mn's		
		START	LOW	HIGH	END			MCAP OPEN	MCAP CLOSE	VOL	VALUE	TRADES
1invest Gold	ETFGLD	295.40	275.57	304.22	303.28	2.67	--	3361.65	3451.33	0.07	21.18	288.00
1invest Palladium	ETFPLD	332.48	309.00	339.09	325.11	-2.22	--	568.22	620.65	0.46	147.19	149.00
1invest Platinum	ETFPLT	145.96	132.60	144.72	140.56	-3.70	--	3140.33	2746.54	0.96	129.55	67.00
1invest Rhodium	ETFRHO	1741.00	1220.00	1742.00	1254.50	-27.94	--	1374.62	1498.57	0.04	56.17	573.00

FIRSTRAND BANK	CODE	START	LOW	HIGH	END	1M %	DISTRIBUTION	MCAP OPEN	MCAP CLOSE	VOL	VALUE	TRADES
KR Custodial Certificate	KCCGLD	31060.00	29299.00	31709.00	31833.00	2.49	--	978.86	1003.22	0.00	8.37	28.00

ABSA	CODE	START	LOW	HIGH	END	1M %	DISTRIBUTION	MCAP OPEN	MCAP CLOSE	VOL	VALUE	TRADES
NewGold	GLD	283.06	264.11	291.18	290.47	2.62	--	21619.54	22650.25	17.46	4,820.83	9656.00
NewPlatinum	NGPLT	145.08	129.96	145.38	139.61	-3.77	--	10170.11	9940.23	13.22	1,800.96	3706.00
NewPalladium	NGPLD	333.18	305.02	335.50	325.21	-2.39	--	899.48	747.88	0.04	13.92	153.00

SA & GLOBAL FIXED INCOME | Prices in Rands | In Rands | Values in Mn's | in 000's | in Mn's |

INVEST	CODE	START	LOW	HIGH	END	1M %	DISTRIBUTION	MCAP OPEN	MCAP CLOSE	VOL	VALUE	TRADES
1invest Govt Bond	ETFGGB	100.44	95.97	106.02	101.41	0.97	--	47.25	32.49	0.05	5.25	176.00
1invest SA Bond	ETFBND	74.42	71.91	75.54	72.97	-1.95	--	29.77	29.19	0.09	6.51	121.00

ASHBURTON	CODE	START	LOW	HIGH	END	1M %	DISTRIBUTION	MCAP OPEN	MCAP CLOSE	VOL	VALUE	TRADES
Ashburton World Global Bond	ASHWGB	8.94	8.46	9.14	9.08	1.57	--	144.24	146.50	0.75	6.69	193.00
Ashburton Inflation	ASHINF	19.27	18.71	19.96	19.03	-1.25	--	308.99	305.15	1.63	31.44	188.00

FIRSTRAND BANK	CODE	START	LOW	HIGH	END	1M %	DISTRIBUTION	MCAP OPEN	MCAP CLOSE	VOL	VALUE	TRADES
2YR Dollar Custodial Certificate	DCCUS2	1770.25	1690.00	1780.80	1768.50	-0.10	8.95	134.54	134.41	0.00	4.58	90.00
Dollar Custodial Certificate	DCCUSD	1890.20	1800.60	1901.50	1895.70	0.29	12.95	160.67	161.13	0.01	15.00	59.00

ABSA NEWFUNDS	CODE	START	LOW	HIGH	END	1M %	DISTRIBUTION	MCAP OPEN	MCAP CLOSE	VOL	VALUE	TRADES
NewFunds TRACI 3-Month	NFTRCI	27.06	27.01	27.24	27.16	0.37	--	225.05	225.88	1.09	29.61	176.00
NewFunds GOVI	NFGOVI	70.06	67.15	73.70	68.04	-2.88	0.45	1675.78	1729.52	3.84	265.81	2216.00
NewFunds ILBI	NFILBI	66.82	61.00	67.56	66.33	-0.73	0.16	60.14	59.70	0.07	4.65	81.00
NewFunds Namibia Bond	NFNAMB	14.58	14.55	15.10	14.81	1.58	--	260.43	264.54	0.16	2.41	50.00

SATRIX MANAGERS	CODE	START	LOW	HIGH	END	1M %	DISTRIBUTION	MCAP OPEN	MCAP CLOSE	VOL	VALUE	TRADES
Satrix ILBI	STXILB	5.75	5.50	5.86	5.60	-2.61	--	115.09	134.49	2.99	17.24	99.00
Satrix SA Bond Portfolio	STXGOV	7.42	7.09	7.58	7.28	-1.89	--	66.64	87.22	2.85	20.69	224.00

The information, data and compilations, or any part thereof, which make up the JSE ETF Factsheet ("Data") is being provided to you strictly for informational purposes. JSE Limited ("JSE") reserves the right to withdraw, modify, or replace the Data (or any part thereof) at any time.

To the extent allowed by law, JSE does not (expressly, tacitly or impliedly) guarantee or warrant the availability, sequence, accuracy, completeness, reliability or any other aspect of any of the Data or that the Data contained therein is up to date. To the extent allowed by law, neither the JSE nor any of its directors, officers, employees, contractors, agents or representatives are liable to any way to the reader/user or to any other natural or juristic person (Person) for any loss or damage as a result of any errors contained in the specification, for any loss arising from use of, or reliance on the Data in this JSE ETF Factsheet or any actions taken or not taken by or behalf of any Person in reliance on any Data in this JSE ETF Factsheet. You may not copy, reproduce, redistribute, alter or transmit any Data without the prior written consent of the JSE.

The Johannesburg Stock Exchange prides itself on a 130 year history as an effective, reputable trading platform. We are currently ranked the 19th largest stock exchange in the world based on market capitalization, and the largest exchange on the African continent. The JSE offers secure and efficient primary and secondary capital markets across a diverse range of asset classes which include equities, commodities, currencies, interest rates and bonds. We are the exchange of choice for local and international investors looking for investment opportunities across leading capital markets in South Africa and the broader African continent.

The JSE's achievements escalate through to this year's 20th anniversary of the first ETF listing on the local Exchange Traded Fund (ETF) market. Today, the ETF market capitalization is close to R90bn with over 70 listed ETFs on the JSE Main Board.

Our Primary Markets Team is a key access point for existing and/or potential issuers to gain exposure to local and international investor capital. The team focuses on listing companies and instruments on the Equity (Main Board and AltX) or Debt Market and aids in product development.

Contact the team: listingontheJSE@jse.co.za

Our Information Services Team works to deliver world class market data to our clients. This data can often be customized on request providing our clients with the exact Intel required to make business and portfolios decisions.

We offer live, delayed, end of day, reference and historical market data for:

- Equities
- Indices
- Equity Derivatives
- Commodity Derivatives
- Commodity Derivatives
- Currency Derivatives
- Interest Rate Derivatives
- Bonds
- Market Announcements (SENS)

We have nearly 170 indices across a wide variety of methodologies and investment criteria.

Our partnership with FTSE Russell includes:

- FTSE/JSE All Share
- FTSE/JSE Top 40
- FTSE/JSE ESG
- FTSE/JSE Factor Indices
- FTSE/JSE Shariah
- FTSE/JSE RAFI and many more

We develop customised indices to suit your needs.

- Our other service offerings include:
- Bond ETP data
- Tick data
- Corporate Actions
- Business Intelligence Reports
- Valuations

Contact the team: mdclients@jse.co.za