

AUGUST'S HIGHLIGHTS

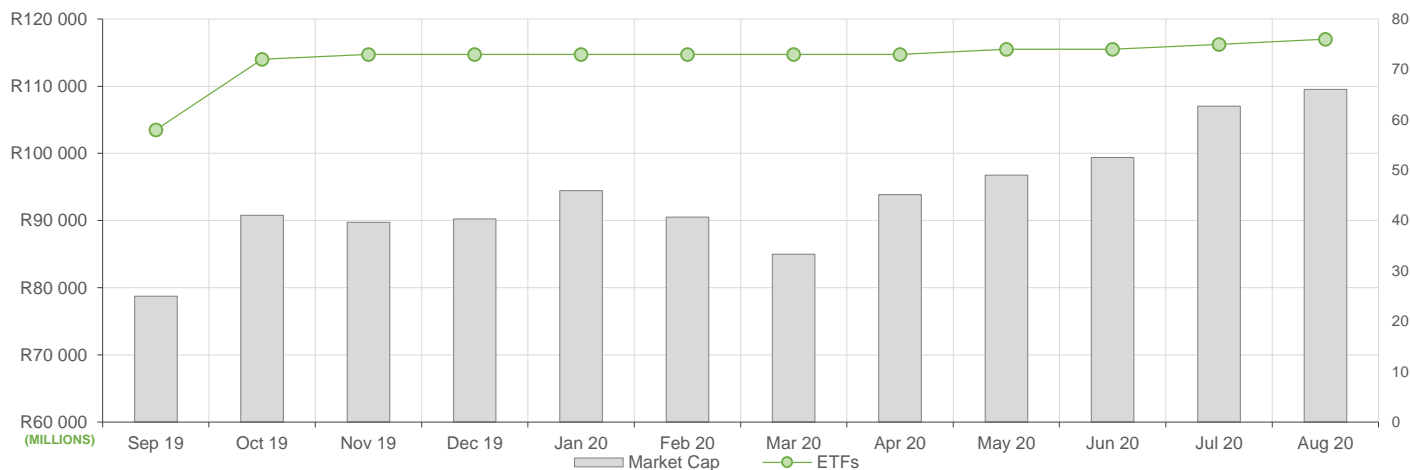
August reflected a marginal increase in ETF activity compared to July, here is what we have seen:

- . ETF Market Capitalization showed a 2% increase month-on-month, the upward shift was driven largely by creations and positive price movements across offshore equity ETFs.
- . ETF unit redemptions reflected across commodity ETFs.
- . Month-on-month ETF value traded was 17% higher compared to July's activity, showcasing roughly R8.8bn in value traded during August.
- . Month-on-Month ETF returns showed positive performance across offshore equity ETFs and some commodity ETFs.

NEW LISTINGS AND DELISTINGS

| ETF | CODE | ISSUER | EVENT | DATE |
|------------------------------|--------|-----------------|---------|-----------|
| Satrix Global Aggregate Bond | STXGBD | Satrix Managers | Listing | 19-Aug-20 |

MARKET CAPITALISATION ANALYSIS | Total Industry



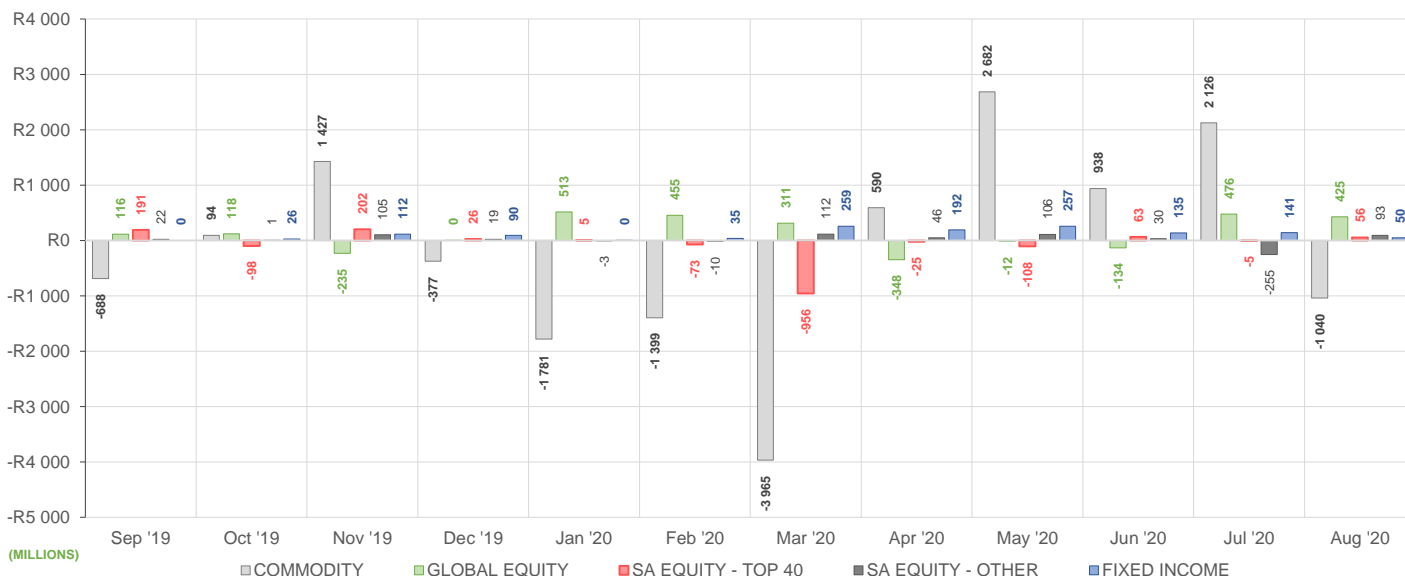
NET DAILY EXCHANGE CREATIONS AND REDEMPTIONS | Top & Bottom Five ETFs

| TOP 5 INSTRUMENTS | CODE | TOTAL DAILY CREATIONS | TOTAL DAILY REDEMPTIONS | NET MONTHLY CREATIONS |
|---------------------------------|--------|-----------------------|-------------------------|-----------------------|
| Satrix MSCI China | STXCHN | R213 208 000 | --- | R213 208 000 |
| 1invest Gold | ETFGLD | R195 166 500 | -R70 509 000 | R124 657 500 |
| Sygnia Itrix 4th Industrial Rev | SYG4IR | R100 801 500 | --- | R100 801 500 |
| 1invest Platinum | ETFPLT | R94 373 000 | --- | R94 373 000 |
| Satrix MSCI World Feeder | STXWDM | R94 259 500 | --- | R94 259 500 |

| BOTTOM 5 INSTRUMENTS | CODE | TOTAL DAILY CREATIONS | TOTAL DAILY REDEMPTIONS | NET MONTHLY CREATIONS |
|-------------------------|--------|-----------------------|-------------------------|-----------------------|
| 1invest Palladium | ETFPLD | --- | -R35 550 500 | -R35 550 500 |
| NewPlatinum | NGPLT | --- | -R127 316 000 | -R127 316 000 |
| Sygnia Itrix MSCI World | SYGWD | R26 819 200 | -R253 871 104 | -R227 051 904 |
| 1invest Rhodium | ETFRHO | --- | -R388 262 045 | -R388 262 045 |
| NewGold | GLD | R96 456 000 | -R803 941 000 | -R707 485 000 |

Considers the daily update to total number of issued units listed on the exchange over the calendar month, with Creations representing a day-on-day increase in total number of listed units, and Redemptions representing a decrease. An average day-on-day price is used to estimate the ZAR value of each net daily movement. No secondary market transactions are considered.

NET MONTHLY EXCHANGE CREATIONS AND REDEMPTIONS



MONTHLY ETF PERFORMANCE | Top & Bottom Five ETFs

| TOP 5 INSTRUMENTS | CODE | TOTAL RETURN | VOLATILITY | MAX DRAW DOWN |
|---------------------------------|--------|--------------|------------|---------------|
| 1invest Rhodium | ETFRHO | 32.59% | 10.43% | -4.13% |
| Satrix Nasdaq 100 | STXNDQ | 11.17% | 6.03% | -2.30% |
| 1invest S&P500 IT | ETF5IT | 9.50% | 9.21% | -5.23% |
| Sygnia Itrix 4th Industrial Rev | SYG4IR | 8.87% | 5.80% | -2.31% |
| NewPalladium | NGPLD | 7.99% | 10.86% | -7.31% |

| BOTTOM 5 INSTRUMENTS | CODE | TOTAL RETURN | VOLATILITY | MAX DRAW DOWN |
|----------------------------------|--------|--------------|------------|---------------|
| Cloud AtlasAMI Big50 ex-SA | AMIB50 | -4.29% | 4.44% | -5.94% |
| Satrix Property | STXPRO | -8.83% | 5.67% | -9.19% |
| CoreShares SA Property | CSPROP | -9.16% | 5.55% | -9.39% |
| 1invest SA Property | ETFSAP | -9.40% | 6.40% | -9.88% |
| Cloud Atlas AMI RealEstate ex-SA | AMIRE | -14.53% | 15.52% | -19.61% |

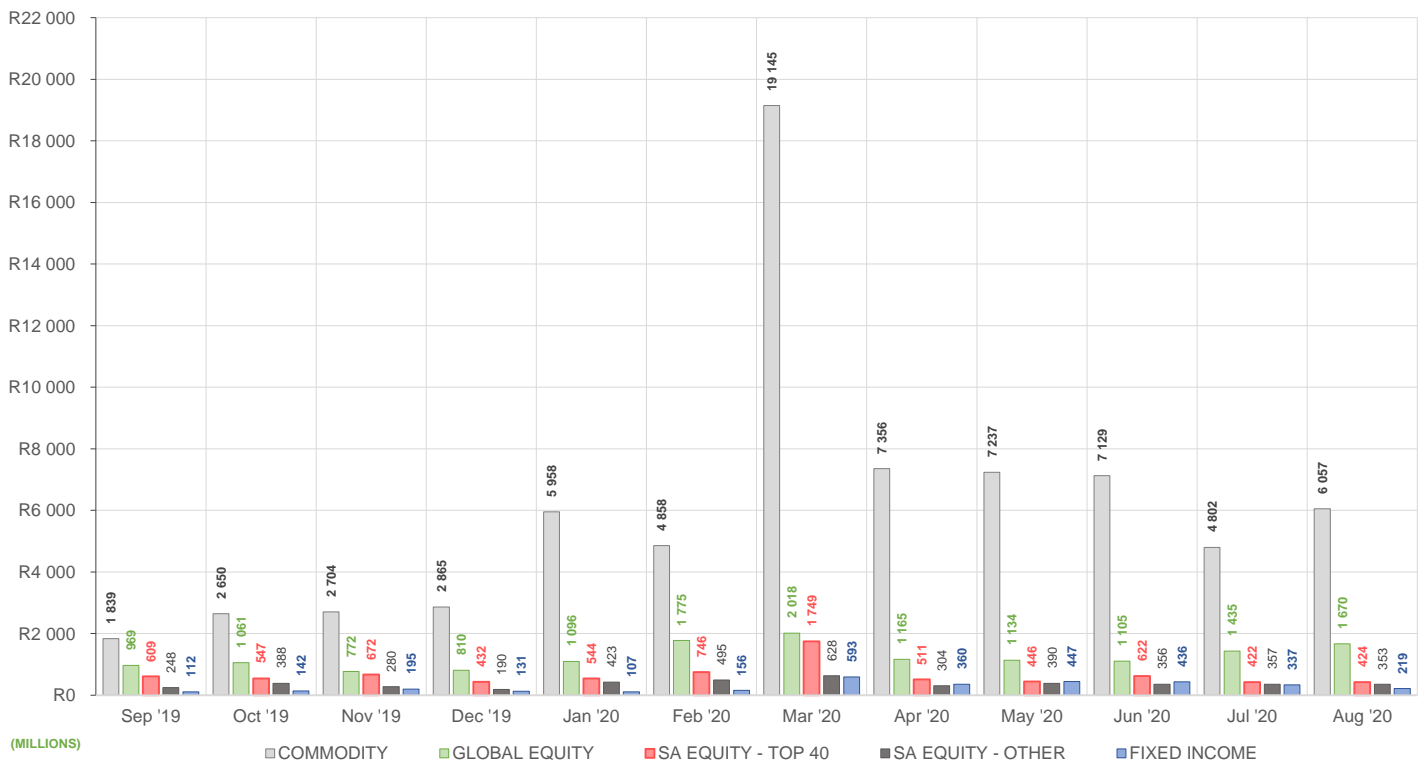
ROLLING 12-MONTH ETF PERFORMANCE | Top & Bottom Five ETFs

| TOP 5 INSTRUMENTS | CODE | TOTAL RETURN | VOLATILITY | MAX DRAW DOWN |
|-------------------|--------|--------------|------------|---------------|
| 1invest Rhodium | ETFRHO | 156.00% | 92.07% | -68.28% |
| Satrix Nasdaq 100 | STXNDQ | 75.30% | 25.43% | -17.91% |
| 1invest S&P500 IT | ETF5IT | 65.54% | 32.40% | -19.75% |
| NewPalladium | NGPLD | 63.37% | 48.74% | -37.18% |
| 1invest Gold | ETFGLD | 52.16% | 21.82% | -14.37% |

| BOTTOM 5 INSTRUMENTS | CODE | TOTAL RETURN | VOLATILITY | MAX DRAW DOWN |
|----------------------------------|--------|--------------|------------|---------------|
| Satrix FINI | STXFIN | -31.24% | 39.66% | -51.24% |
| Cloud Atlas AMI RealEstate ex-SA | AMIRE | -39.64% | 92.42% | -52.36% |
| 1invest SA Property | ETFSAP | -45.07% | 130.71% | -63.06% |
| Satrix Property | STXPRO | -47.81% | 41.76% | -58.94% |
| CoreShares SA Property | CSPROP | -48.61% | 37.97% | -57.26% |

Total Return is the monthly/annual performance incorporating price performance and immediate reinvestment of dividends. Volatility is the based on daily price standard deviation and presented as a monthly/annual volatility. Maximum draw down measures the worst case return outcome for an investor over the course of the period – based on purchase and subsequent sale timing that results in the largest loss of capital.

MONTHLY VALUE TRADED FOR ALL ETFs



MONTHLY ETF TRADE STATISTICS | Top & Bottom Five Funds

| TOP 5 INSTRUMENTS | CODE | VOLUME | VALUE | TRADES | LIQUIDITY |
|-------------------------|--------|------------|-------------------|--------|-----------|
| NewGold | GLD | 12 667 844 | R4 057 949 459.00 | 7 835 | 15.80% |
| NewPlatinum | NGPLT | 5 474 967 | R870 265 362.70 | 3 082 | 8.23% |
| Satrix 40 | STX40 | 5 179 062 | R272 001 677.60 | 2 736 | 3.18% |
| Sygnia Itrix MSCI World | SYGWD | 5 988 409 | R247 795 878.50 | 1 696 | 2.53% |
| Satrix DIVI | STXDIV | 12 963 628 | R27 100 582.73 | 712 | 2.06% |

| BOTTOM 5 INSTRUMENTS | CODE | VOLUME | VALUE | TRADES | LIQUIDITY |
|----------------------------------|--------|--------|----------------|--------|-----------|
| Dollar Custodial Certificate | DCCUSD | 9 874 | R18 490 777.64 | 43 | 11.62% |
| KR Custodial Certificate | KCCGLD | 302 | R10 738 540.50 | 48 | 0.96% |
| 2YR Dollar Custodial Certificate | DCCUS2 | 1 966 | R3 474 658.62 | 40 | 2.59% |
| 1invest S&P500 | ETF500 | 11 007 | R3 224 072.80 | 196 | 6.88% |
| NewFunds VM Def Equity | NFEDEF | 2 773 | R26 191.72 | 19 | 0.05% |

Volume, Value and Trades are the aggregate counts of all trade activity in the ETF for the month on the JSE equity market. This includes central order book and reported trades, but excludes creations and redemptions. Liquidity is the total volume traded expressed as a percentage of the number of listed instruments for the ETF as at the end of the month.

MONTHLY DETAILED ETF INFORMATION

SA EQUITY | TOP 40

Prices in Rands

In Rands

Values in Mn's

in 000's | in Mn's |

| INVEST | CODE | START | LOW | HIGH | END | 1M % | DISTRIBUTION | MCAP OPEN | MCAP CLOSE | VOL | VALUE | TRADES |
|------------------------|--------|-------|-------|-------|-------|-------|--------------|-----------|------------|------|--------|---------|
| Invest SWIX 40 | ETFSWX | 10.57 | 10.34 | 10.94 | 10.50 | -0.66 | -- | 1850.71 | 1838.46 | 0.11 | 1.13 | 52.00 |
| Invest Top 40 | ETFT40 | 51.37 | 51.29 | 55.00 | 52.11 | 1.44 | -- | 670.16 | 711.86 | 0.84 | 43.92 | 821.00 |
| ASHBURTON | | | | | | | | | | | | |
| Ashburton Top 40 | ASHT40 | 51.39 | 51.10 | 53.91 | 51.38 | -0.02 | -- | 1307.28 | 1317.30 | 0.94 | 49.33 | 273.00 |
| SATRIX MANAGERS | | | | | | | | | | | | |
| Satrix 40 | STX40 | 51.34 | 51.05 | 53.79 | 51.45 | 0.21 | -- | 8332.07 | 8375.65 | 5.18 | 272.00 | 2736.00 |
| Satrix SWIX Top 40 | STXSXW | 10.57 | 10.08 | 11.00 | 10.51 | -0.57 | -- | 358.51 | 358.58 | 2.34 | 25.03 | 180.00 |
| SYGNIA ITRIX | | | | | | | | | | | | |
| Sygnia Itrix SWIX 40 | SYGSW4 | 10.58 | 10.52 | 10.99 | 10.50 | -0.76 | -- | 222.09 | 220.41 | 0.33 | 3.59 | 78.00 |
| Sygnia Itrix Top 40 | SYGT40 | 51.57 | 51.78 | 54.15 | 51.59 | 0.04 | -- | 275.89 | 276.00 | 0.15 | 7.75 | 80.00 |

SA EQUITY | OTHER

Prices in Rands

In Rands

Values in Mn's

in 000's | in Mn's |

| INVEST | CODE | START | LOW | HIGH | END | 1M % | DISTRIBUTION | MCAP OPEN | MCAP CLOSE | VOL | VALUE | TRADES |
|-----------------------------|--------|-------|-------|-------|-------|-------|--------------|-----------|------------|-------|--------|---------|
| Invest SA Property | ETFSAP | 26.07 | 23.82 | 29.52 | 23.62 | -9.40 | -- | 158.19 | 232.26 | 4.02 | 102.79 | 1074.00 |
| ASHBURTON | | | | | | | | | | | | |
| Ashburton Mid Cap | ASHMID | 5.69 | 5.50 | 5.93 | 5.66 | -0.53 | -- | 332.87 | 331.11 | 1.85 | 10.65 | 372.00 |
| COESHARES | | | | | | | | | | | | |
| CoreShares DivTrax | DIVTRX | 19.31 | 18.98 | 19.86 | 19.19 | -0.62 | -- | 203.85 | 196.82 | 0.62 | 12.08 | 201.00 |
| CoreShares Top 50 | CTOP50 | 22.07 | 22.09 | 23.09 | 22.12 | 0.23 | -- | 1325.41 | 1333.94 | 1.28 | 28.90 | 305.00 |
| CoreShares SciBeta M-FI | SMART | 38.37 | 37.94 | 39.69 | 37.84 | -1.38 | -- | 96.12 | 94.79 | 0.03 | 1.27 | 91.00 |
| CoreShares PrefTrax | PREFTX | 6.99 | 6.76 | 7.32 | 7.00 | 0.14 | -- | 274.92 | 275.31 | 1.14 | 8.01 | 220.00 |
| CoreShares SA Property | CSPROP | 7.97 | 7.25 | 8.10 | 7.24 | -9.16 | -- | 181.89 | 165.23 | 0.66 | 5.13 | 240.00 |
| ABSA NEWFUNDS | | | | | | | | | | | | |
| NewFunds Equity Momentum | NFEMOM | 35.99 | 35.63 | 37.84 | 35.92 | -0.19 | -- | 305.56 | 304.97 | 0.34 | 12.58 | 148.00 |
| Newfunds MAPPs Growth | MAPPSP | 21.87 | 21.23 | 22.93 | 21.88 | 0.05 | -- | 39.51 | 39.53 | 0.04 | 0.98 | 62.00 |
| Newfunds MAPPs Protect | MAPPSP | 37.79 | 37.42 | 38.62 | 38.24 | 1.19 | -- | 41.90 | 42.40 | 0.02 | 0.74 | 39.00 |
| NewFunds S&P GIVI SA Top 50 | GIVISA | 36.82 | 36.54 | 38.65 | 36.81 | -0.03 | -- | 75.75 | 75.73 | 0.06 | 2.41 | 93.00 |
| NewFunds Shari'ah | NFSH40 | 3.26 | 3.24 | 3.56 | 3.30 | 1.23 | -- | 50.78 | 51.40 | 0.29 | 0.98 | 105.00 |
| NewFunds Equity Value | NFEVAL | 7.28 | 7.00 | 7.48 | 7.00 | -3.85 | -- | 91.13 | 87.63 | 0.16 | 1.14 | 38.00 |
| NewFunds Low Volatility | NFEVOL | 8.19 | 8.14 | 8.55 | 8.14 | -0.61 | -- | 99.53 | 98.92 | 0.10 | 0.82 | 43.00 |
| NewFunds VM Def Equity | NFEDEF | 9.45 | 9.42 | 9.53 | 9.36 | -0.95 | -- | 48.99 | 48.52 | 0.00 | 0.03 | 19.00 |
| NewFunds VM High Growth | NFEHGE | 8.29 | 8.27 | 8.63 | 8.36 | 0.84 | -- | 61.14 | 61.66 | 0.21 | 1.79 | 45.00 |
| NewFunds VM Mod Equity | NFEMOD | 8.58 | 8.47 | 9.51 | 8.51 | -0.82 | -- | 47.74 | 47.35 | 1.15 | 10.23 | 88.00 |
| SATRIX MANAGERS | | | | | | | | | | | | |
| Satrix DIVI | STXDIV | 2.05 | 2.02 | 2.15 | 2.07 | 0.98 | -- | 1300.50 | 1304.91 | 12.96 | 27.10 | 712.00 |
| Satrix FINI | STXFIN | 10.14 | 9.74 | 10.58 | 9.78 | -3.55 | -- | 555.03 | 517.72 | 3.34 | 34.03 | 722.00 |
| Satrix INDI | STXIND | 70.36 | 69.51 | 73.61 | 71.04 | 0.97 | -- | 1803.92 | 1814.25 | 0.58 | 41.36 | 385.00 |
| Satrix Momentum | STXMMT | 9.57 | 9.46 | 9.83 | 9.54 | -0.31 | -- | 26.87 | 26.79 | 0.07 | 0.72 | 41.00 |
| Satrix Property | STXPRO | 7.59 | 6.86 | 7.67 | 6.92 | -8.83 | -- | 154.62 | 138.89 | 1.19 | 8.73 | 302.00 |
| Satrix Quality SA | STXQUA | 7.26 | 7.18 | 7.75 | 7.18 | -1.10 | -- | 102.63 | 108.68 | 1.54 | 11.40 | 109.00 |
| Satrix RAFI 40 | STXRAF | 12.98 | 12.77 | 13.80 | 12.87 | -0.85 | -- | 831.72 | 809.23 | 1.51 | 20.06 | 236.00 |
| Satrix RESI | STXRES | 56.66 | 56.12 | 62.50 | 56.82 | 0.28 | -- | 520.59 | 550.47 | 0.52 | 31.10 | 522.00 |

GLOBAL EQUITY

Prices in Rands

In Rands

Values in Mn's

in 000's | in Mn's |

| INVEST | CODE | START | LOW | HIGH | END | 1M % | DISTRIBUTION | MCAP OPEN | MCAP CLOSE | VOL | VALUE | TRADES |
|----------------------------------|--------|--------|--------|--------|--------|--------|--------------|-----------|------------|------|--------|---------|
| Invest Global REIT | ETFGRE | 18.17 | 17.81 | 19.63 | 18.47 | 1.65 | -- | 104.47 | 104.34 | 0.21 | 3.98 | 243.00 |
| Invest MSCI World | ETFWLD | 52.81 | 53.78 | 57.15 | 55.70 | 5.47 | -- | 103.35 | 111.23 | 0.05 | 2.70 | 142.00 |
| Invest S&P 500 | ETF500 | 276.46 | 282.51 | 300.20 | 292.93 | 5.96 | -- | 42.83 | 46.85 | 0.01 | 3.22 | 196.00 |
| Invest S&P 500 IT | ETF5IT | 11.58 | 11.58 | 14.00 | 12.68 | 9.50 | -- | 304.54 | 348.69 | 4.98 | 62.55 | 1541.00 |
| ASHBURTON | | | | | | | | | | | | |
| Ashburton Global Equity | ASHGEQ | 57.26 | 58.00 | 63.91 | 60.48 | 5.62 | -- | 811.89 | 881.74 | 0.60 | 36.23 | 622.00 |
| CLOUD ATLAS | | | | | | | | | | | | |
| Cloud Atlas AMI Big50 ex-SA | AMIB50 | 11.20 | 10.50 | 11.38 | 10.72 | -4.29 | -- | 17.76 | 16.99 | 0.44 | 4.95 | 208.00 |
| Cloud Atlas AMI RealEstate ex-SA | AMIRE | 29.25 | 23.62 | 29.50 | 25.00 | -14.53 | -- | 0.82 | 2.07 | 0.05 | 1.13 | 35.00 |
| COESHARES | | | | | | | | | | | | |
| CoreShares Global Property | GLPROP | 39.39 | 39.86 | 42.64 | 40.49 | 2.79 | -- | 444.28 | 456.69 | 0.45 | 18.48 | 323.00 |
| CoreShares Global DivTrax | GLODIV | 14.24 | 14.22 | 15.40 | 14.96 | 5.06 | -- | 663.22 | 696.75 | 3.24 | 48.27 | 693.00 |
| CoreShares S&P 500 | CSP500 | 55.15 | 55.36 | 59.85 | 59.06 | 7.09 | -- | 1138.33 | 1230.84 | 0.44 | 25.98 | 595.00 |
| SATRIX MANAGERS | | | | | | | | | | | | |
| Satrix MSCI Emerging Markets | STXEMG | 50.15 | 50.71 | 53.57 | 51.43 | 2.55 | -- | 986.59 | 1037.48 | 1.21 | 63.39 | 844.00 |
| Satrix MSCI World Feeder | STXWDM | 103.72 | 104.97 | 115.59 | 115.31 | 11.17 | -- | 1578.71 | 1824.31 | 1.48 | 163.93 | 1775.00 |
| Satrix Nasdaq 100 | STXNDQ | 55.45 | 55.99 | 61.50 | 59.50 | 7.30 | -- | 1229.55 | 1349.11 | 1.26 | 73.92 | 808.00 |
| Satrix S&P 500 Feeder | STX500 | 53.18 | 52.50 | 58.00 | 56.45 | 6.15 | -- | 3385.98 | 3690.14 | 2.74 | 153.30 | 1350.00 |
| Satrix MSCI China | STXCHN | 55.17 | 55.90 | 59.47 | 57.72 | 4.62 | -- | 350.69 | 580.47 | 4.09 | 236.35 | 2670.00 |
| SYGNIA ITRIX | | | | | | | | | | | | |
| Sygnia Itrix 4th Industrial Rev | SYG4IR | 36.29 | 36.89 | 40.15 | 39.51 | 6.15 | -- | 951.09 | 1136.23 | 3.67 | 143.46 | 1989.00 |
| Sygnia Itrix EUROSTOXX50 | SYGEU | 64.74 | 64.63 | 75.00 | 67.39 | 4.09 | -- | 2554.36 | 2685.87 | 1.26 | 85.87 | 996.00 |
| Sygnia Itrix FTSE100 | SYGUK | 132.55 | 132.40 | 144.06 | 135.20 | 2.00 | -- | 803.25 | 819.31 | 0.28 | 38.87 | 393.00 |
| Sygnia Itrix Global Property | SYGYP | 40.80 | 41.43 | 43.92 | 41.91 | 2.72 | -- | 272.67 | 280.09 | 0.36 | 15.37 | 404.00 |
| Sygnia Itrix MSCI Japan | SYGJP | 14.74 | 14.92 | 16.30 | 15.56 | 5.56 | -- | 741.01 | 800.90 | 0.91 | 14.26 | 365.00 |
| Sygnia Itrix MSCI US | SYGUS | 52.20 | 53.04 | 56.52 | 56.22 | 7.70 | -- | 5741.69 | 6155.75 | 1.63 | 90.19 | 971.00 |
| Sygnia Itrix MSCI World | SYGWD | 39.36 | 39.76 | 42.47 | 41.65 | 5.82 | -- | 9523.45 | 9850.92 | 5.99 | 247.80 | 1696.00 |
| Sygnia Itrix S&P 500 | SYG500 | 55.82 | 56.82 | 60.50 | 59.87 | 7.26 | -- | 1625.54 | 1794.37 | 2.31 | 136.21 | 750.00 |

MONTHLY DETAILED ETF INFORMATION

COMMODITIES

Prices in Rands | In Rands | Values in Mn's | in 000's | in Mn's |

| INVEST | CODE | START | LOW | HIGH | END | 1M % | DISTRIBUTION | MCAP OPEN | MCAP CLOSE | VOL | VALUE | TRADES |
|-------------------|--------|---------|---------|---------|---------|-------|--------------|-----------|------------|------|--------|--------|
| 1invest Gold | ETFGLD | 328.91 | 314.85 | 361.20 | 325.16 | -1.14 | -- | 4055.46 | 4131.16 | 0.59 | 192.82 | 637.00 |
| 1invest Palladium | ETFPLD | 349.06 | 345.84 | 382.39 | 376.41 | 7.84 | -- | 1338.31 | 1405.53 | 0.36 | 130.05 | 158.00 |
| 1invest Platinum | ETFPLT | 151.21 | 149.47 | 169.89 | 154.31 | 2.05 | -- | 3234.38 | 3393.28 | 0.62 | 97.83 | 111.00 |
| 1invest Rhodium | ETFRHO | 1455.53 | 1385.86 | 2025.00 | 1929.88 | 32.59 | -- | 1935.21 | 2176.05 | 0.33 | 625.71 | 608.00 |

| FIRSTRAND BANK | CODE | START | LOW | HIGH | END | 1M % | DISTRIBUTION | MCAP OPEN | MCAP CLOSE | VOL | VALUE | TRADES |
|--------------------------|--------|----------|----------|----------|----------|-------|--------------|-----------|------------|------|-------|--------|
| KR Custodial Certificate | KCCGLD | 34503.00 | 33239.00 | 37220.00 | 34099.50 | -1.17 | -- | 1087.36 | 1074.65 | 0.00 | 10.74 | 48.00 |

| ABSA | CODE | START | LOW | HIGH | END | 1M % | DISTRIBUTION | MCAP OPEN | MCAP CLOSE | VOL | VALUE | TRADES |
|--------------|-------|--------|--------|--------|--------|-------|--------------|-----------|------------|-------|----------|---------|
| NewGold | GLD | 315.15 | 300.48 | 341.30 | 312.01 | -1.00 | -- | 25961.41 | 25016.32 | 12.67 | 4,057.95 | 7835.00 |
| NewPlatinum | NGPLT | 149.93 | 148.15 | 168.92 | 153.14 | 2.14 | -- | 10090.29 | 10183.81 | 5.47 | 870.27 | 3082.00 |
| NewPalladium | NGPLD | 347.25 | 345.40 | 381.98 | 375.00 | 7.99 | -- | 798.57 | 862.39 | 0.20 | 71.16 | 458.00 |

SA & GLOBAL FIXED INCOME

Prices in Rands | In Rands | Values in Mn's | in 000's | in Mn's |

| INVEST | CODE | START | LOW | HIGH | END | 1M % | DISTRIBUTION | MCAP OPEN | MCAP CLOSE | VOL | VALUE | TRADES |
|-------------------|--------|--------|-------|--------|-------|-------|--------------|-----------|------------|------|-------|--------|
| 1invest Govt Bond | ETFGGB | 101.52 | 97.20 | 106.09 | 99.22 | -2.27 | -- | 32.53 | 35.76 | 0.05 | 4.65 | 190.00 |
| 1invest SA Bond | ETFBND | 73.39 | 72.89 | 74.21 | 74.18 | 1.08 | -- | 29.36 | 29.67 | 0.08 | 6.19 | 90.00 |

| ASHBURTON | CODE | START | LOW | HIGH | END | 1M % | DISTRIBUTION | MCAP OPEN | MCAP CLOSE | VOL | VALUE | TRADES |
|-----------------------------|--------|-------|-------|-------|-------|-------|--------------|-----------|------------|------|-------|--------|
| Ashburton World Global Bond | ASHWGB | 9.11 | 8.61 | 9.54 | 8.93 | -1.98 | 0.03 | 146.99 | 144.08 | 0.76 | 6.98 | 209.00 |
| Ashburton Inflation | ASHINF | 18.73 | 18.49 | 19.72 | 19.59 | 4.59 | -- | 319.06 | 323.92 | 0.18 | 3.33 | 87.00 |

| FIRSTRAND BANK | CODE | START | LOW | HIGH | END | 1M % | DISTRIBUTION | MCAP OPEN | MCAP CLOSE | VOL | VALUE | TRADES |
|----------------------------------|--------|---------|---------|---------|---------|-------|--------------|-----------|------------|------|-------|--------|
| 2YR Dollar Custodial Certificate | DCCUS2 | 1738.50 | 1701.00 | 1795.30 | 1720.05 | -1.06 | -- | 132.13 | 130.72 | 0.00 | 3.47 | 40.00 |
| Dollar Custodial Certificate | DCCUSD | 1870.75 | 1833.20 | 1941.50 | 1844.10 | -1.42 | -- | 159.01 | 156.75 | 0.01 | 18.49 | 43.00 |

| ABSA NEWFUNDS | CODE | START | LOW | HIGH | END | 1M % | DISTRIBUTION | MCAP OPEN | MCAP CLOSE | VOL | VALUE | TRADES |
|------------------------|--------|-------|-------|-------|-------|------|--------------|-----------|------------|------|--------|--------|
| NewFunds TRACI 3-Month | NFTRCI | 27.24 | 25.00 | 27.43 | 27.35 | 0.40 | -- | 226.55 | 227.46 | 0.94 | 25.62 | 310.00 |
| NewFunds GOVI | NFGOVI | 67.55 | 66.75 | 69.88 | 68.47 | 1.36 | 0.56 | 1818.39 | 1877.39 | 1.72 | 117.38 | 854.00 |
| NewFunds ILBI | NFILBI | 65.12 | 65.00 | 68.29 | 67.96 | 4.36 | 0.18 | 58.61 | 61.16 | 0.12 | 7.99 | 51.00 |
| NewFunds Namibia Bond | NFNAMB | 14.74 | 14.62 | 15.06 | 14.90 | 1.09 | -- | 263.29 | 266.15 | 0.03 | 0.38 | 24.00 |

| SATRIX MANAGERS | CODE | START | LOW | HIGH | END | 1M % | DISTRIBUTION | MCAP OPEN | MCAP CLOSE | VOL | VALUE | TRADES |
|------------------------------|--------|-------|-------|-------|-------|------|--------------|-----------|------------|------|-------|--------|
| Satrix ILBI | STXILB | 5.50 | 5.38 | 5.83 | 5.79 | 5.27 | -- | 132.09 | 139.05 | 2.70 | 15.16 | 93.00 |
| Satrix SA Bond Portfolio | STXGOV | 7.35 | 7.17 | 7.44 | 7.38 | 0.41 | -- | 110.11 | 117.94 | 1.58 | 11.57 | 85.00 |
| Satrix Global Aggregate Bond | STXGBD | -- | 44.75 | 47.50 | 45.63 | -- | -- | -- | 22.87 | 0.20 | 9.36 | 83.00 |

The information, data and compilations, or any part thereof, which make up the JSE ETF Factsheet ("Data") is being provided to you strictly for informational purposes. JSE Limited ("JSE") reserves the right to withdraw, modify, or replace the Data (or any part thereof) at any time.

To the extent allowed by law, JSE does not (expressly, tacitly or impliedly) guarantee or warrant the availability, sequence, accuracy, completeness, reliability or any other aspect of any of the Data or that the Data contained therein is up to date. To the extent allowed by law, neither the JSE nor any of its directors, officers, employees, contractors, agents or representatives are liable to any way to the reader/user or to any other natural or juristic person (Person) for any loss or damage as a result of any errors contained in the specification, for any loss arising from use of, or reliance on the Data in this JSE ETF Factsheet or any actions taken or not taken by or behalf of any Person in reliance on any Data in this JSE ETF Factsheet. You may not copy, reproduce, redistribute, alter or transmit any Data without the prior written consent of the JSE.



The Johannesburg Stock Exchange prides itself on a 130 year history as an effective, reputable trading platform. We are currently ranked the 19th largest stock exchange in the world based on market capitalization, and the largest exchange on the African continent. The JSE offers secure and efficient primary and secondary capital markets across a diverse range of asset classes which include equities, commodities, currencies, interest rates and bonds. We are the exchange of choice for local and international investors looking for investment opportunities across leading capital markets in South Africa and the broader African continent.

The JSE's achievements escalate through to this year's 20th anniversary of the first ETF listing on the local Exchange Traded Fund (ETF) market. Today, the ETF market capitalization is close to R90bn with over 70 listed ETFs on the JSE Main Board.

Our Primary Markets Team is a key access point for existing and/or potential issuers to gain exposure to local and international investor capital. The team focuses on listing companies and instruments on the Equity (Main Board and AltX) or Debt Market and aids in product development.

Contact the team: listingontheJSE@jse.co.za

Our Information Services Team works to deliver world class market data to our clients. This data can often be customized on request providing our clients with the exact Intel required to make business and portfolios decisions.

We offer live, delayed, end of day, reference and historical market data for:

- Equities
- Indices
- Equity Derivatives
- Commodity Derivatives
- Commodity Derivatives
- Currency Derivatives
- Interest Rate Derivatives
- Bonds
- Market Announcements (SENS)

We have nearly 170 indices across a wide variety of methodologies and investment criteria.

Our partnership with FTSE Russell includes:

- FTSE/JSE All Share
- FTSE/JSE Top 40
- FTSE/JSE ESG
- FTSE/JSE Factor Indices
- FTSE/JSE Shariah
- FTSE/JSE RAFI and many more

We develop customised indices to suit your needs.

- Our other service offerings include:
- Bond ETP data
- Tick data
- Corporate Actions
- Business Intelligence Reports
- Valuations

Contact the team: mdclients@jse.co.za