



NOVEMBER'S HIGHLIGHTS

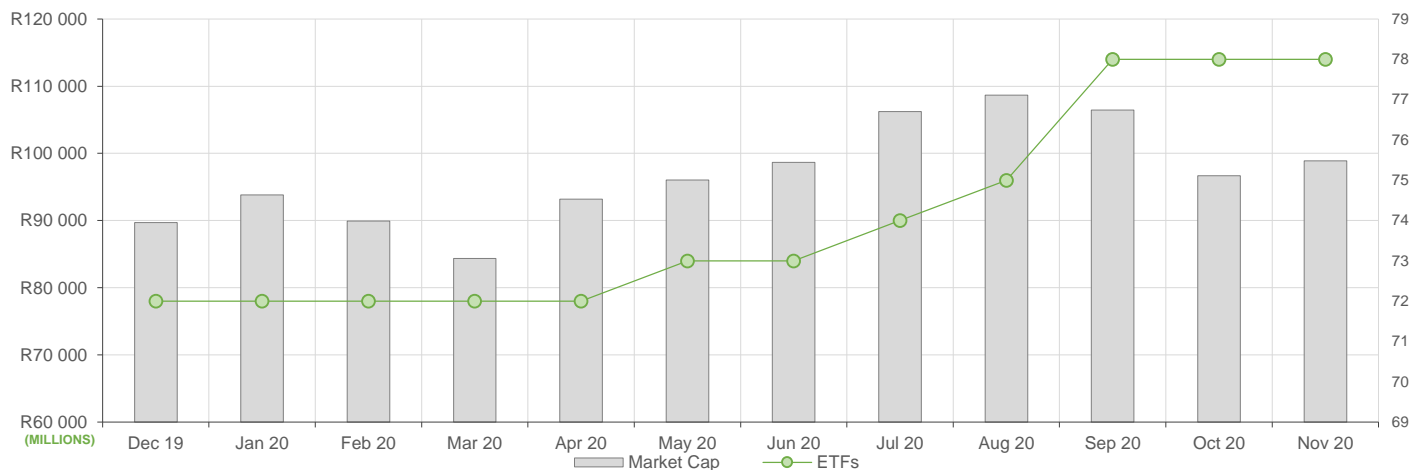
November reflected varied ETF activity compared to October, here is what we have seen:

- . ETF Market Capitalization showed a 2% increase month-on-month. The upward shift was driven largely by ETF unit creations in global equity ETFs and upward price movements across local and global equity ETFs.
- . ETF unit redemptions reflected largely across commodity ETFs, particularly gold.
- . Month-on-month ETF value traded was R1.6bn less compared to October's activity, reflecting roughly R11bn in total value traded during November.
- . Month-on-Month ETF returns showed largely positive performances across local and global equity ETFs.

NEW LISTINGS AND DELISTINGS

ETF	CODE	ISSUER	EVENT	DATE
--	--	--	--	--

MARKET CAPITALISATION ANALYSIS | Total Industry



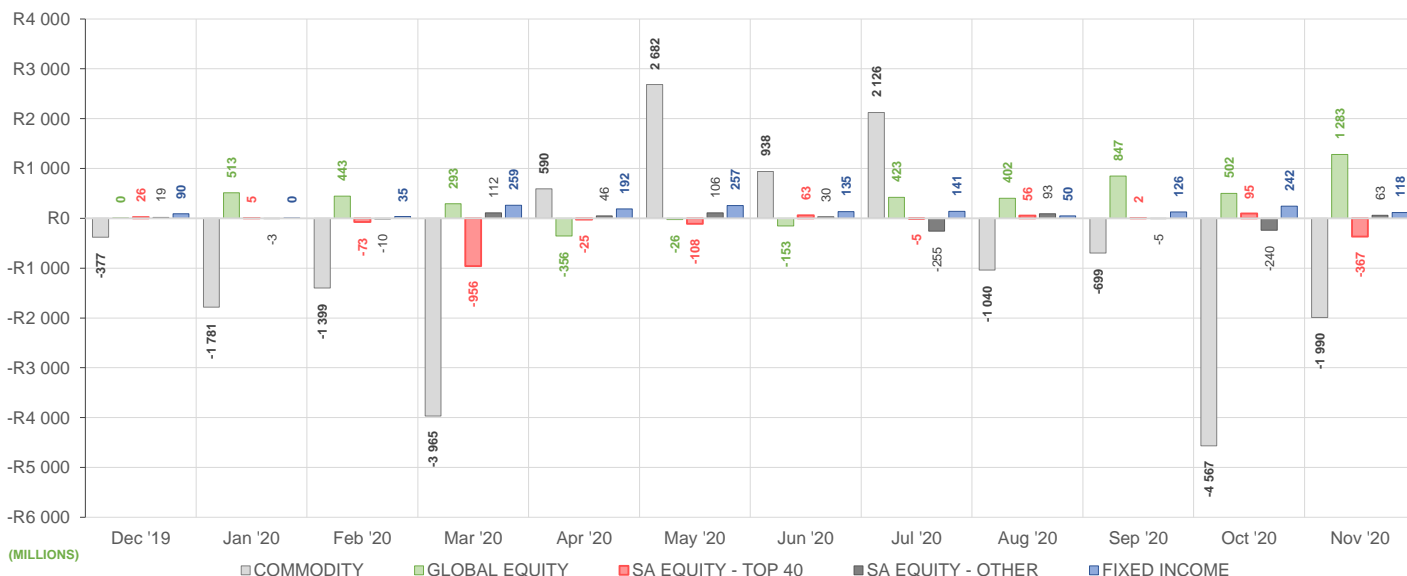
NET DAILY EXCHANGE CREATIONS AND REDEMPTIONS | Top & Bottom Five ETFs

TOP 5 INSTRUMENTS	CODE	TOTAL DAILY CREATIONS	TOTAL DAILY REDEMPTIONS	NET MONTHLY CREATIONS
1invest Platinum	ETFPLT	R 1 987 648 500	-R1 537 900 875	R449 747 625
Sygnia Itrix MSCI World	SYGWD	R331 262 387	---	R331 262 387
Satrix MSCI World Feeder	STXWDM	R177 068 500	---	R177 068 500
Satrix MSCI China	STXCHN	R164 401 500	---	R164 401 500
1invest SA Property	ETFSAP	R139 582 250	---	R139 582 250

BOTTOM 5 INSTRUMENTS	CODE	TOTAL DAILY CREATIONS	TOTAL DAILY REDEMPTIONS	NET MONTHLY CREATIONS
1invest Palladium	ETFPLD	---	-R142 868 000	-R142 868 000
1invest SWIX 40	ETFSWX	---	-R247 835 592	-R247 835 592
NewPlatinum	NGPLT	R140 259 500	-R417 036 500	-R276 777 000
1invest Gold	ETFGLD	---	-R842 729 625	-R842 729 625
NewGold	GLD	R55 008 000	-R1 336 419 000	-R1 281 411 000

Considers the daily update to total number of issued units listed on the exchange over the calendar month, with Creations representing a day-on-day increase in total number of listed units, and Redemptions representing a decrease. An average day-on-day price is used to estimate the ZAR value of each net daily movement. No secondary market transactions are considered.

NET MONTHLY EXCHANGE CREATIONS AND REDEMPTIONS



MONTHLY ETF PERFORMANCE | Top & Bottom Five ETFs

TOP 5 INSTRUMENTS	CODE	TOTAL RETURN	VOLATILITY	MAX DRAW DOWN
Satrix Property	STXPRO	19.41%	9.67%	-4.60%
CoreShares SA Property	CSPROP	18.71%	9.62%	-5.23%
1invest SA Property	ETFSAP	18.48%	11.79%	-6.67%
Satrix FINI	STXFIN	18.44%	12.30%	-6.33%
Sygnia Itrix 4th Industrial Rev	SYG4IR	16.91%	4.26%	-0.80%

BOTTOM 5 INSTRUMENTS	CODE	TOTAL RETURN	VOLATILITY	MAX DRAW DOWN
2YR Dollar Custodial Certificate	DCCUS2	-5.66%	96.91%	-49.88%
Dollar Custodial Certificate	DCCUSD	-6.26%	5.13%	-7.29%
1invest Gold	ETFGLD	-11.04%	7.92%	-11.50%
NewGold	GLD	-11.06%	7.63%	-11.50%
KR Custodial Certificate	KCCGLD	-11.08%	28.32%	-17.76%

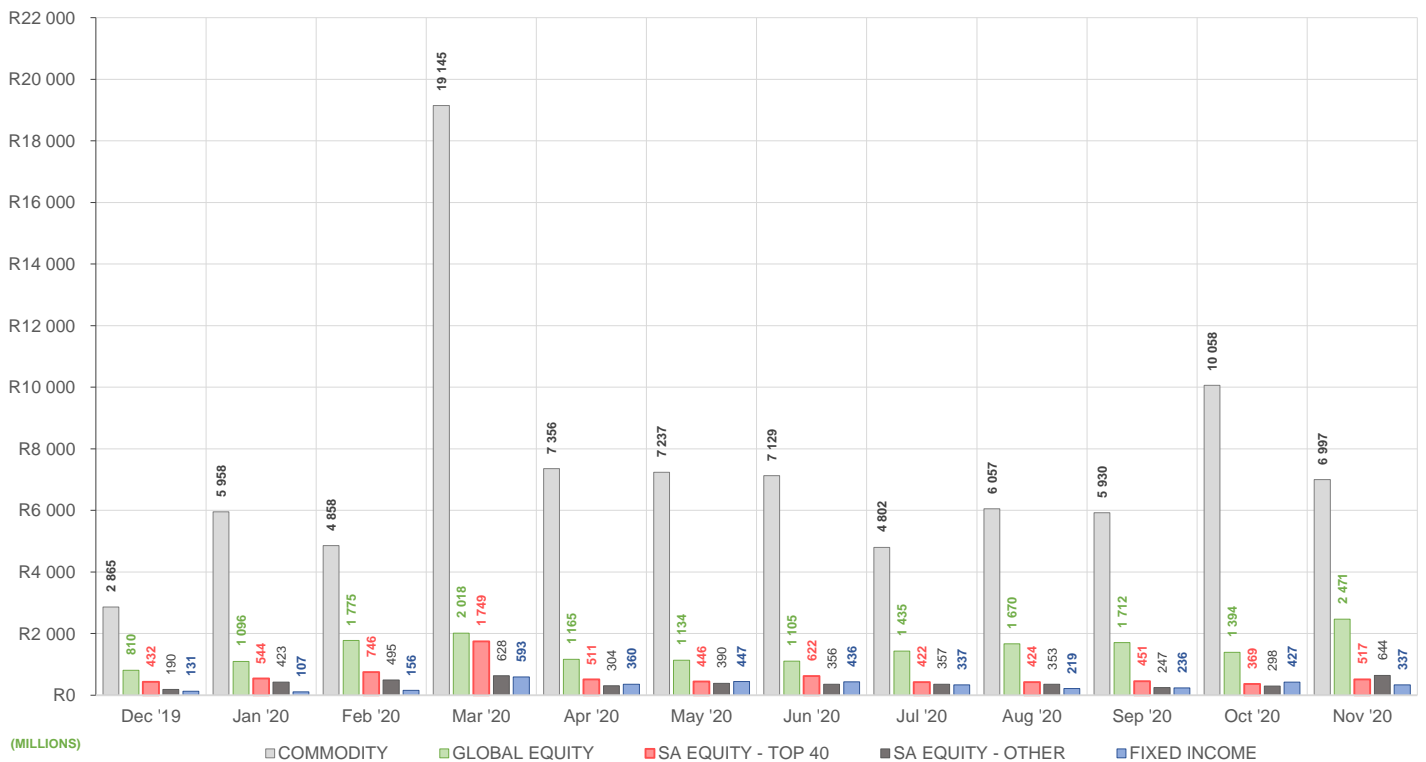
ROLLING 12-MONTH ETF PERFORMANCE | Top & Bottom Five ETFs

TOP 5 INSTRUMENTS	CODE	TOTAL RETURN	VOLATILITY	MAX DRAW DOWN
1invest Rhodium	ETFRHO	178.16%	94.46%	-68.28%
Sygnia Itrix 4th Industrial Rev	SYG4IR	60.35%	29.18%	-28.43%
Satrix Nasdaq 100	STXNDQ	53.78%	27.44%	-17.91%
1invest S&P 500 IT	ETF5IT	46.22%	31.71%	-19.75%
1invest Palladium	ETPLD	36.88%	56.63%	-38.14%

BOTTOM 5 INSTRUMENTS	CODE	TOTAL RETURN	VOLATILITY	MAX DRAW DOWN
Satrix FINI	STXFIN	-25.46%	42.80%	-49.48%
Cloud Atlas AMI Big50 ex-SA	AMIB50	-28.63%	141.45%	-53.56%
1invest SA Property	ETFSAP	-43.69%	131.14%	-67.68%
CoreShares SA Property	CSPROP	-44.69%	40.54%	-56.33%
Satrix Property	STXPRO	-47.28%	45.00%	-60.75%

Total Return is the monthly/annual performance incorporating price performance and immediate reinvestment of dividends. Volatility is the based on daily price standard deviation and presented as a monthly/annual volatility. Maximum draw down measures the worst case return outcome for an investor over the course of the period – based on purchase and subsequent sale timing that results in the largest loss of capital.

MONTHLY VALUE TRADED FOR ALL ETFs



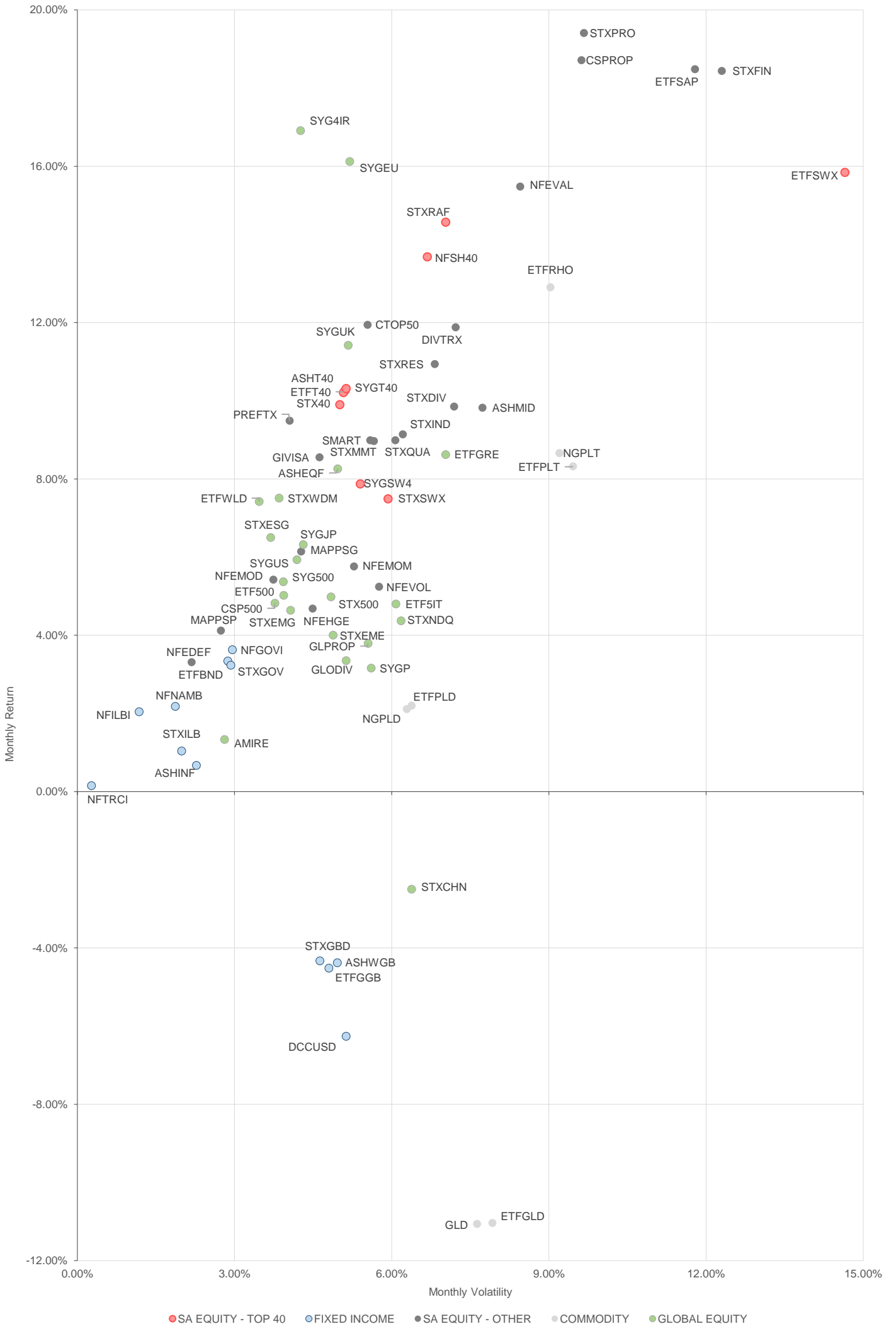
MONTHLY ETF TRADE STATISTICS | Top & Bottom Five Funds

TOP 5 INSTRUMENTS	CODE	VOLUME	VALUE	TRADES	LIQUIDITY
NewGold	GLD	9 954 529	R2 692 902 153.00	7 338	13.97%
1invest Platinum	ETFPLT	16 581 921	R2 358 098 500.00	160	60.19%
1invest SA Property	ETFSAP	8 607 734	R208 141 587.30	2 142	54.73%
Satrix FINI	STXFIN	11 913 395	R131 620 010.80	969	22.50%
Satrix DIVI	STXDIV	19 524 774	R43 499 162.68	731	3.14%

BOTTOM 5 INSTRUMENTS	CODE	VOLUME	VALUE	TRADES	LIQUIDITY
Dollar Custodial Certificate	DCCUSD	10 062	R16 905 182.20	90	11.84%
KR Custodial Certificate	KCCGLD	158	R4 957 935.98	27	0.50%
1invest S&P500	ETF500	15 230	R4 248 618.16	223	7.81%
2YR Dollar Custodial Certificate	DCCUS2	1 734	R2 728 357.80	48	2.28%
Cloud Atlas AMI RealEstate ex-SA	AMIRE	522	R13 307.45	33	0.63%

Volume, Value and Trades are the aggregate counts of all trade activity in the ETF for the month on the JSE equity market. This includes central order book and reported trades, but excludes creations and redemptions. Liquidity is the total volume traded expressed as a percentage of the number of listed instruments for the ETF as at the end of the month.

TOTAL RETURN VERSUS VOLATILITY



● SA EQUITY - TOP 40 ● FIXED INCOME ● SA EQUITY - OTHER ● COMMODITY ● GLOBAL EQUITY

MONTHLY DETAILED ETF INFORMATION

SA EQUITY | TOP 40

Prices in Rands

In Rands

Values in Mn's

in 000's | in Mn's

INVEST	CODE	START	LOW	HIGH	END	1M %	DISTRIBUTION	MCAP OPEN	MCAP CLOSE	VOL	VALUE	TRADES
Invest SWIX 40	ETFSWX	10.15	10.27	11.17	10.75	5.91	--	1777.17	1636.68	0.70	7.62	63.00
Invest Top 40	ETFT40	48.42	47.00	53.37	52.33	8.08	--	711.08	685.06	0.03	1.55	91.00

ASHBURTON	CODE	START	LOW	HIGH	END	1M %	DISTRIBUTION	MCAP OPEN	MCAP CLOSE	VOL	VALUE	TRADES
Ashburton Top 40	ASHT40	48.43	48.51	53.96	52.35	8.09	--	1256.19	1373.58	1.49	77.56	617.00

SATRIX MANAGERS	CODE	START	LOW	HIGH	END	1M %	DISTRIBUTION	MCAP OPEN	MCAP CLOSE	VOL	VALUE	TRADES
Satrix 40	STX40	48.43	48.51	53.60	52.28	7.95	--	7927.60	8542.13	6.48	337.35	3603.00
Satrix SWIX Top 40	STXSXW	10.18	10.17	11.09	10.76	5.70	--	347.32	367.11	0.54	5.89	183.00

SYGNIA ITRIX	CODE	START	LOW	HIGH	END	1M %	DISTRIBUTION	MCAP OPEN	MCAP CLOSE	VOL	VALUE	TRADES
Sygnia Itrix SWIX 40	SYGSW4	10.23	10.24	11.14	10.83	5.87	--	201.78	207.31	0.20	2.21	44.00
Sygnia Itrix Top 40	SYGT40	49.12	49.83	54.26	53.19	8.29	--	268.92	301.84	0.15	8.07	75.00

SA EQUITY | OTHER

Prices in Rands

In Rands

Values in Mn's

in 000's | in Mn's

INVEST	CODE	START	LOW	HIGH	END	1M %	DISTRIBUTION	MCAP OPEN	MCAP CLOSE	VOL	VALUE	TRADES
Invest SA Property	ETFSAP	20.99	20.81	26.00	24.49	16.67	--	207.86	385.18	8.60	208.08	2133.00

ASHBURTON	CODE	START	LOW	HIGH	END	1M %	DISTRIBUTION	MCAP OPEN	MCAP CLOSE	VOL	VALUE	TRADES
Ashburton Mid Cap	ASHMID	5.57	5.60	6.50	6.04	8.44	--	325.85	359.38	3.68	22.86	386.00

COESHARES	CODE	START	LOW	HIGH	END	1M %	DISTRIBUTION	MCAP OPEN	MCAP CLOSE	VOL	VALUE	TRADES
CoreShares DivTrax	DIVTRX	17.96	18.22	20.84	19.96	11.14	--	110.37	127.85	0.24	4.76	151.00
CoreShares Top 50	CTOP50	20.66	20.99	23.29	22.68	9.78	--	1145.98	1258.02	0.13	2.83	132.00
CoreShares SciBeta M-FI	SMART	35.61	36.00	40.00	38.19	7.25	--	89.21	95.67	0.05	2.07	100.00
CoreShares PrefTrax	PREFTX	6.25	6.23	6.96	6.92	10.72	--	245.81	272.16	1.79	11.88	307.00
CoreShares SA Property	CSPROP	6.59	6.60	8.05	7.74	17.45	--	150.39	176.64	0.88	6.56	258.00

ABSA NEWFUNDS	CODE	START	LOW	HIGH	END	1M %	DISTRIBUTION	MCAP OPEN	MCAP CLOSE	VOL	VALUE	TRADES
NewFunds Equity Momentum	NFEMOM	32.46	33.02	34.86	33.59	3.48	--	275.59	285.19	0.51	17.29	123.00
Newfunds MAPPS Growth	MAPPSG	21.44	21.58	23.01	22.47	4.80	--	38.74	40.60	0.06	1.45	58.00
Newfunds MAPPS Protect	MAPPSP	37.82	37.33	39.73	39.15	3.52	--	41.93	43.41	0.03	1.26	58.00
NewFunds S&P GIVI SA Top 50	GIVISA	33.84	34.41	37.12	36.17	6.89	--	69.62	74.41	0.02	0.73	51.00
NewFunds Shariah	NFSH40	2.92	2.94	3.31	3.24	10.96	--	45.48	50.46	0.29	0.93	73.00
NewFunds Equity Value	NFEVAL	7.00	7.22	8.31	7.98	14.00	--	87.63	115.86	4.50	36.59	55.00
NewFunds Low Volatility	NFEVOL	8.27	8.45	9.18	8.64	4.47	--	100.50	104.99	0.07	0.61	36.00
NewFunds VM Def Equity	NFEDEF	9.39	9.48	9.81	9.67	2.98	--	48.68	50.13	0.10	1.00	16.00
NewFunds VM High Growth	NFEHGE	7.78	7.89	8.40	8.06	3.60	--	57.38	59.44	0.26	2.17	39.00
NewFunds VM Mod Equity	NFEMOD	8.40	8.46	9.02	8.75	4.17	--	46.74	48.69	0.36	3.16	36.00

SATRIX MANAGERS	CODE	START	LOW	HIGH	END	1M %	DISTRIBUTION	MCAP OPEN	MCAP CLOSE	VOL	VALUE	TRADES
Satrix DIVI	STXDIV	2.03	2.05	2.33	2.23	9.85	--	1271.57	1385.70	19.33	43.10	700.00
Satrix FINI	STXFIN	9.61	9.70	12.10	11.24	16.96	--	524.10	595.01	11.83	130.85	938.00
Satrix INDI	STXIND	70.07	69.87	77.80	75.80	8.18	--	1740.43	1806.96	0.46	34.81	567.00
Satrix Momentum	STXMMT	8.95	9.10	10.00	9.60	7.26	--	25.13	26.95	0.06	0.63	45.00
Satrix Property	STXPRO	6.15	6.10	7.50	7.26	18.05	--	131.43	122.49	7.60	52.27	714.00
Satrix Quality SA	STXQUA	6.66	6.73	7.53	7.15	7.36	--	100.81	68.90	5.27	37.88	230.00
Satrix RAFI 40	STXRAF	12.06	12.24	14.08	13.63	13.02	0.00	751.06	810.68	3.10	41.60	381.00
Satrix RESI	STXRES	49.80	50.15	54.13	53.45	7.33	--	457.56	571.27	0.21	11.24	274.00

GLOBAL EQUITY

Prices in Rands

In Rands

Values in Mn's

in 000's | in Mn's

INVEST	CODE	START	LOW	HIGH	END	1M %	DISTRIBUTION	MCAP OPEN	MCAP CLOSE	VOL	VALUE	TRADES
Invest Global REIT	ETFGRE	16.72	15.95	18.67	17.90	7.06	--	97.80	103.36	0.25	4.38	136.00
Invest MSCI World	ETFWLD	51.25	51.01	58.79	54.14	5.64	--	105.42	113.26	0.03	1.68	96.00
Invest S&P 500	ETF500	270.61	269.00	294.40	280.29	3.58	--	48.69	54.63	0.01	4.07	200.00
Invest S&P 500 IT	ETF5IT	11.46	11.13	12.46	11.80	2.97	--	317.77	335.70	2.88	33.86	713.00

ASHBURTON	CODE	START	LOW	HIGH	END	1M %	DISTRIBUTION	MCAP OPEN	MCAP CLOSE	VOL	VALUE	TRADES
Ashburton Global 1200	ASHEQF	54.80	54.02	62.80	58.54	6.82	0.22	855.92	940.68	0.80	45.95	530.00

CLOUD ATLAS	CODE	START	LOW	HIGH	END	1M %	DISTRIBUTION	MCAP OPEN	MCAP CLOSE	VOL	VALUE	TRADES
Cloud Atlas AMI Big50 ex-SA	AMIB50	9.33	8.45	11.00	8.80	-5.68	--	14.79	6.35	1.00	8.88	430.00
Cloud Atlas AMI RealEstate ex-SA	AMIRE	25.65	24.95	26.20	25.99	1.33	--	2.13	2.16	0.00	0.01	32.00

COESHARES	CODE	START	LOW	HIGH	END	1M %	DISTRIBUTION	MCAP OPEN	MCAP CLOSE	VOL	VALUE	TRADES
CoreShares Global Property	GLPROP	36.82	36.76	38.94	37.78	2.61	--	415.30	426.12	1.02	38.60	414.00
CoreShares Global DivTrax	GLODIV	13.89	13.95	14.80	14.48	4.25	--	673.97	711.28	3.13	44.90	553.00
CoreShares S&P 500	CSP500	53.97	53.52	56.50	55.70	3.21	--	1154.72	1198.68	0.79	43.60	623.00

SATRIX MANAGERS	CODE	START	LOW	HIGH	END	1M %	DISTRIBUTION	MCAP OPEN	MCAP CLOSE	VOL	VALUE	TRADES
Satrix MSCI Emerging Markets	STXEMG	49.86	49.19	53.20	51.87	4.03	--	1065.64	1186.41	7.66	388.99	1718.00
Satrix MSCI World Feeder	STXWDM	50.94	50.90	55.69	54.57	7.13	--	3503.15	3932.87	7.67	409.43	2103.00
Satrix Nasdaq 100	STXNDQ	103.10	100.51	111.35	106.51	3.31	--	1816.72	1962.01	1.96	205.88	1854.00
Satrix S&P 500 Feeder	STX500	53.87	53.26	58.50	56.29	4.49	--	1323.80	1411.42	2.76	153.83	1577.00
Satrix MSCI China	STXCHN	57.62	55.00	60.25	55.83	-3.11	--	856.04	991.35	3.43	195.86	2063.00
Satrix MSCI EM ESG ETF	STXEME	45.50	44.61	48.80	46.76	2.77	--	27.50	46.97	0.36	17.11	138.00
Satrix MSCI World ESG ETF	STXESG	45.96	46.27	50.50	48.49	5.50	--	50.93	73.13	0.38	18.02	168.00

SYGNIA ITRIX	CODE	START	LOW	HIGH	END	1M %	DISTRIBUTION	MCAP OPEN	MCAP CLOSE	VOL	VALUE	TRADES
Sygnia Itrix 4th Industrial Rev	SYG4IR	38.67	38.30	45.00	44.04	4.49	--	1317.02	1533.32	3.99	166.70	1723.00
Sygnia Itrix EUROSTOXX50	SYGEU	57.66	57.78	65.84	65.71	13.96	--	2326.91	2754.76	1.43	90.40	1232.00
Sygnia Itrix FTSE100	SYGUK	119.11	119.90	132.99	131.37	10.29	--	721.81	796.10	0.15	19.85	402.00
Sygnia Itrix Global Property	SYGP	38.61	37.80	43.99	39.21	1.55	--	407.33	471.82	0.89	35.10	209.00
Sygnia Itrix MSCI Japan	SYGJP	15.22	15.14	16.28	15.99	5.06	--	792.53	872.60	1.17	18.46	554.00
Sygnia Itrix MSCI US	SYGUS	51.34	51.00	54.00	53.44	4.09	--	5557.25	5784.56	2.35	124.11	1434.00
Sygnia Itrix MSCI World	SYGWD	38.12	37.96	41.50	40.35	5.85	--	8954.16	9813.87	5.48	217.22	1989.00
Sygnia Itrix S&P 500	SYG500	54.63	54.48	57.26	56.53	3.48	--	1734.01	1877.43	2.34	131.40	705.00

MONTHLY DETAILED ETF INFORMATION

COMMODITIES

INVEST	CODE	Prices in Rands				END	1M %	DISTRIBUTION	Values in Mn's		in 000's in Mn's		
		START	LOW	HIGH	END				MCAP OPEN	MCAP CLOSE	VOL	VALUE	TRADES
1invest Gold	ETFGLD	301.17	264.30	303.60	267.04	-11.33	--	1688.06	662.26	3.02	834.74	417.00	
1invest Palladium	ETFPLD	351.14	343.99	379.66	359.75	2.45	--	1398.96	1289.36	0.41	146.59	237.00	
1invest Platinum	ETFPLT	136.77	131.44	146.69	146.28	6.95	--	3176.48	4030.01	16.58	2,358.1	157.00	
1invest Rhodium	ETFRHO	2090.71	2000.03	2433.31	2314.16	10.69	--	937.80	1139.85	0.12	275.54	504.00	

FIRSTRAND BANK	CODE	START	LOW	HIGH	END	1M %	DISTRIBUTION	MCAP OPEN	MCAP CLOSE	VOL	VALUE	TRADES
KR Custodial Certificate	KCCGLD	31603.00	28260.00	31829.00	28009.50	-11.37	--	995.97	882.72	0.00	4.89	25.00

ABSA	CODE	START	LOW	HIGH	END	1M %	DISTRIBUTION	MCAP OPEN	MCAP CLOSE	VOL	VALUE	TRADES
NewGold	GLD	288.26	253.09	291.33	255.37	-11.41	--	21901.40	18202.25	9.72	2,625.49	6999.00
NewPlatinum	NGPLT	135.27	127.47	146.00	145.38	7.47	--	8116.20	8432.04	4.18	578.78	1601.00
NewPalladium	NGPLD	351.37	344.71	379.11	359.45	2.30	--	702.63	718.79	0.25	87.50	391.00

SA & GLOBAL FIXED INCOME

INVEST	CODE	Prices in Rands				END	1M %	DISTRIBUTION	Values in Mn's		in 000's in Mn's		
		START	LOW	HIGH	END				MCAP OPEN	MCAP CLOSE	VOL	VALUE	TRADES
1invest Govt Bond	ETFGBB	96.43	86.50	99.95	92.33	-4.25	--	37.65	36.05	0.03	2.65	144.00	
1invest SA Bond	ETFBND	74.25	74.05	78.04	77.04	3.76	--	44.55	46.22	0.05	3.63	104.00	

ASHBURTON	CODE	START	LOW	HIGH	END	1M %	DISTRIBUTION	MCAP OPEN	MCAP CLOSE	VOL	VALUE	TRADES
Ashburton World Global Bond	ASHWGB	8.56	7.50	8.65	8.24	-3.74	0.04	138.11	132.95	0.45	3.70	160.00
Ashburton Inflation	ASHINF	19.44	19.21	20.10	19.58	0.72	--	317.55	319.84	0.25	4.93	78.00

FIRSTRAND BANK	CODE	START	LOW	HIGH	END	1M %	DISTRIBUTION	MCAP OPEN	MCAP CLOSE	VOL	VALUE	TRADES
2YR Dollar Custodial Certificate	DCCUS2	1659.20	1552.00	1636.30	1568.50	-5.47	--	126.10	119.21	0.00	2.73	48.00
Dollar Custodial Certificate	DCCUSD	1772.55	1632.60	1780.00	1663.50	-6.15	--	150.67	141.40	0.01	16.91	90.00

ABSA NEWFUNDS	CODE	START	LOW	HIGH	END	1M %	DISTRIBUTION	MCAP OPEN	MCAP CLOSE	VOL	VALUE	TRADES
NewFunds TRACI 3-Month	NFTRCI	27.54	26.78	27.73	27.57	0.11	--	229.04	229.29	0.97	26.65	181.00
NewFunds GOVI	NFGOVI	68.96	68.50	74.34	71.33	3.44	0.48	2132.19	2276.79	3.28	233.07	1767.00
NewFunds ILBI	NFILBI	67.56	67.06	69.36	68.75	1.76	0.18	60.80	61.88	0.10	6.68	65.00
NewFunds Namibia Bond	NFNAMB	15.14	14.92	15.74	15.47	2.18	--	270.43	276.33	0.05	0.74	28.00

SATRIX MANAGERS	CODE	START	LOW	HIGH	END	1M %	DISTRIBUTION	MCAP OPEN	MCAP CLOSE	VOL	VALUE	TRADES
Satrix ILBI	STXILB	5.77	5.65	5.93	5.82	0.87	--	144.34	145.59	2.51	14.45	105.00
Satrix SA Bond Portfolio	STXGOV	7.40	7.35	7.81	7.66	3.51	--	229.26	260.29	5.22	40.02	160.00
Satrix Global Aggregate Bond	STXGBD	43.98	41.17	44.20	42.17	-4.12	--	26.44	42.22	0.42	17.80	69.00

The information, data and compilations, or any part thereof, which make up the JSE ETF Factsheet ("Data") is being provided to you strictly for informational purposes. JSE Limited ("JSE") reserves the right to withdraw, modify, or replace the Data (or any part thereof) at any time.

To the extent allowed by law, JSE does not (expressly, tacitly or impliedly) guarantee or warrant the availability, sequence, accuracy, completeness, reliability or any other aspect of any of the Data or that the Data contained therein is up to date. To the extent allowed by law, neither the JSE nor any of its directors, officers, employees, contractors, agents or representatives are liable to any way to the reader/user or to any other natural or juristic person (Person) for any loss or damage as a result of any errors contained in the specification, for any loss arising from use of, or reliance on the Data in this JSE ETF Factsheet or any actions taken or not taken by or behalf of any Person in reliance on any Data in this JSE ETF Factsheet. You may not copy, reproduce, redistribute, alter or transmit any Data without the prior written consent of the JSE.

The Johannesburg Stock Exchange prides itself on a 130 year history as an effective, reputable trading platform. We are currently ranked the 19th largest stock exchange in the world based on market capitalization, and the largest exchange on the African continent. The JSE offers secure and efficient primary and secondary capital markets across a diverse range of asset classes which include equities, commodities, currencies, interest rates and bonds. We are the exchange of choice for local and international investors looking for investment opportunities across leading capital markets in South Africa and the broader African continent.

The JSE's achievements escalate through to this year's 20th anniversary of the first ETF listing on the local Exchange Traded Fund (ETF) market. Today, the ETF market capitalization is close to R90bn with over 70 listed ETFs on the JSE Main Board.

Our Primary Markets Team is a key access point for existing and/or potential issuers to gain exposure to local and international investor capital. The team focuses on listing companies and instruments on the Equity (Main Board and AltX) or Debt Market and aids in product development.

Contact the team: listingontheJSE@jse.co.za

Our Information Services Team works to deliver world class market data to our clients. This data can often be customized on request providing our clients with the exact Intel required to make business and portfolios decisions.

We offer live, delayed, end of day, reference and historical market data for:

- Equities
- Indices
- Equity Derivatives
- Commodity Derivatives
- Commodity Derivatives
- Currency Derivatives
- Interest Rate Derivatives
- Bonds
- Market Announcements (SENS)

We have nearly 170 indices across a wide variety of methodologies and investment criteria.

Our partnership with FTSE Russell includes:

- FTSE/JSE All Share
- FTSE/JSE Top 40
- FTSE/JSE ESG
- FTSE/JSE Factor Indices
- FTSE/JSE Shariah
- FTSE/JSE RAFI and many more

We develop customised indices to suit your needs.

- Our other service offerings include:
- Bond ETP data
- Tick data
- Corporate Actions
- Business Intelligence Reports
- Valuations

Contact the team: mdclients@jse.co.za