

DECEMBER'S HIGHLIGHTS

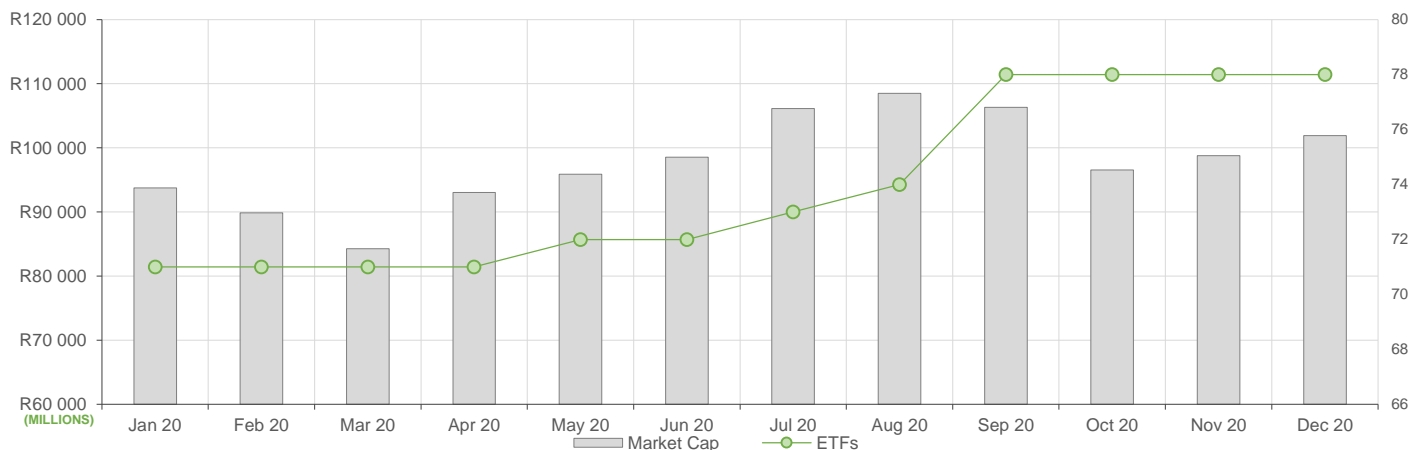
December reflected varied ETF activity compared to November, here is what we have seen:

- ETF Market Capitalization showed a 3% increase month-on-month. The upward shift was driven largely by ETF unit creations in some commodity ETFs and upward price movements across local equity ETFs, particularly local property ETFs.
- ETF unit redemptions reflected largely across commodity ETFs and Top 40 equity ETFs.
- Month-on-month ETF value traded was noticeably less compared to November's activity, reflecting roughly R5.5bn in total value traded during December.
- Month-on-Month ETF returns showed largely positive performances across local equity ETFs, particularly local property ETFs. Monthly negative returns were mostly evident in global equity ETFs.

NEW LISTINGS AND DELISTINGS

ETF	CODE	ISSUER	EVENT	DATE

MARKET CAPITALISATION ANALYSIS | Total Industry



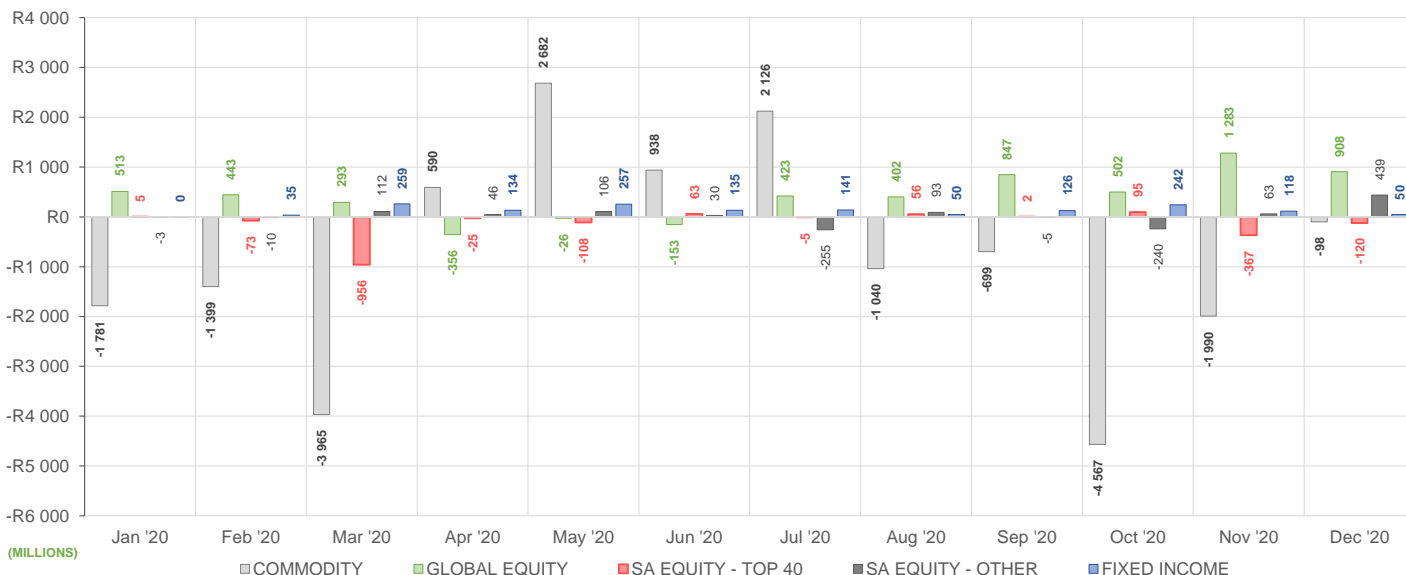
NET DAILY EXCHANGE CREATIONS AND REDEMPTIONS | Top & Bottom Five ETFs

TOP 5 INSTRUMENTS	CODE	TOTAL DAILY CREATIONS	TOTAL DAILY REDEMPTIONS	NET MONTHLY CREATIONS
1investPlatinum	ETFPLT	R357 219 725	-R15 276 500	R341 943 225
Satrix INDI	STXIND	R302 067 500	---	R302 067 500
1investGold	ETFGLD	R350 605 000	-R81 257 000	R269 348 000
1invest SA Property	ETFSAP	R224 625 750	---	R224 625 750
SYGNIA ITRIX MSCI WORLD	SYGWD	R190 371 000	---	R190 371 000

BOTTOM 5 INSTRUMENTS	CODE	TOTAL DAILY CREATIONS	TOTAL DAILY REDEMPTIONS	NET MONTHLY CREATIONS
Satrix RESI	STXRES	---	-R109 763 000	-R109 763 000
Satrix 40	STX40	---	-R125 493 000	-R125 493 000
SYGNIA ITRIX MSCI JAPAN	SYGJP	---	-R164 164 424	-R164 164 424
1investPalladium	ETFPLD	---	-R258 011 625	-R258 011 625
1investRhodium	ETFRHO	---	-R311 882 105	-R311 882 105

Considers the daily update to total number of issued units listed on the exchange over the calendar month, with Creations representing a day-on-day increase in total number of listed units, and Redemptions representing a decrease. An average day-on-day price is used to estimate the ZAR value of each net daily movement. No secondary market transactions are considered.

NET MONTHLY EXCHANGE CREATIONS AND REDEMPTIONS



MONTHLY ETF PERFORMANCE | Top & Bottom Five ETFs

TOP 5 INSTRUMENTS	CODE	TOTAL RETURN	VOLATILITY	MAX DRAW DOWN
1invest SA Property	ETFSAP	13,64%	8,39%	-4,56%
CoreShares SAProp	CSPROP	12,66%	7,77%	-4,68%
Satrix Property	STXPRO	11,57%	9,10%	-5,58%
Satrix Quality SA	STXQUA	9,65%	4,15%	-2,55%
Satrix RESI	STXRES	9,62%	6,13%	-4,07%

BOTTOM 5 INSTRUMENTS	CODE	TOTAL RETURN	VOLATILITY	MAX DRAW DOWN
Sygnia Itrix Gbl Pro	SYGP	-4,69%	4,03%	-6,43%
AMI Big50 ex-SA	AMIB50	-5,11%	6,03%	-7,34%
CoreShares Global Prop	GLPROP	-5,32%	4,56%	-7,12%
NewGold Palladium	NGPLD	-5,80%	9,89%	-8,24%
1investPalladium	ETFPLD	-5,81%	9,83%	-8,38%

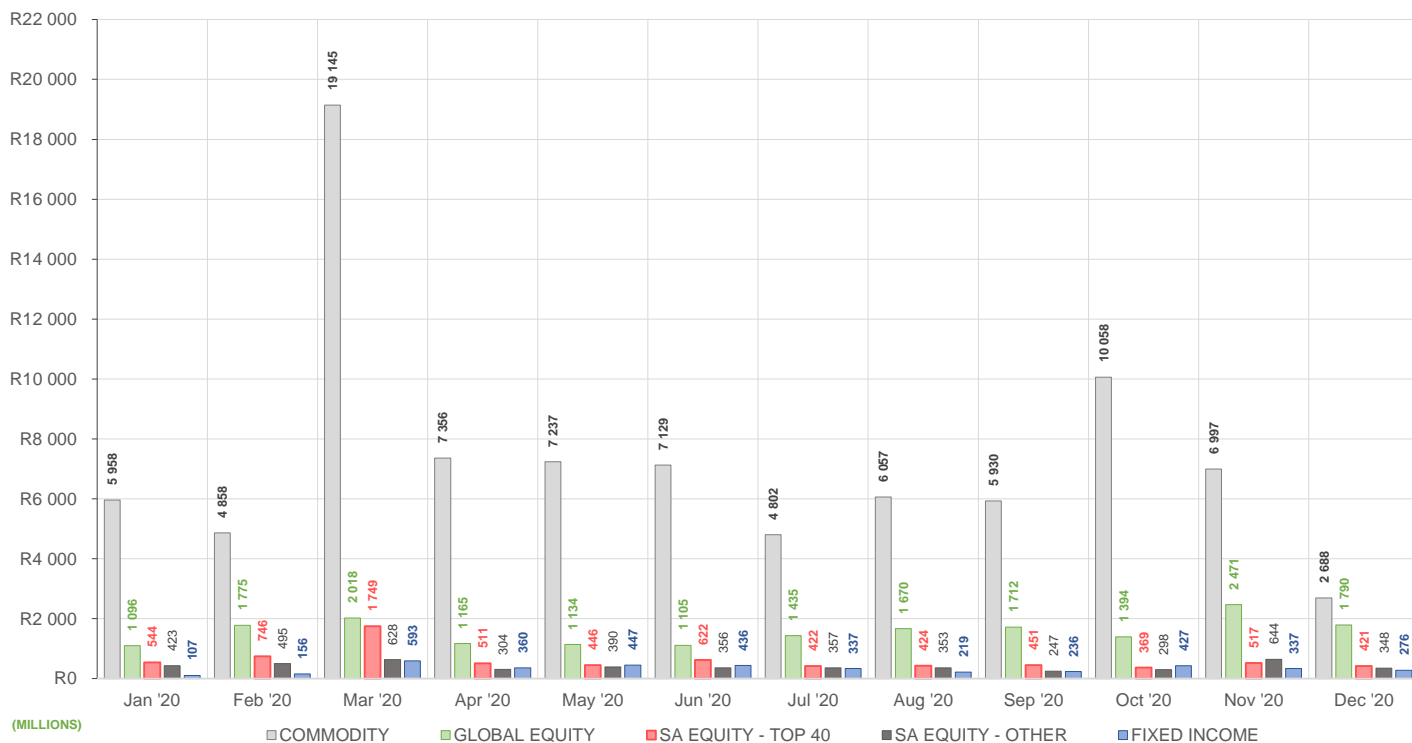
ROLLING 12-MONTH ETF PERFORMANCE | Top & Bottom Five ETFs

TOP 5 INSTRUMENTS	CODE	TOTAL RETURN	VOLATILITY	MAX DRAW DOWN
1investRhodium	ETFRHO	187,14%	94,46%	-68,28%
Sygnia Itrix 4lnd Rev Gb	SYG4IR	69,38%	29,43%	-28,43%
Satrix Nasdaq 100	STXNDQ	54,87%	27,64%	-17,91%
1invest S&P500 IT	ETF5IT	49,13%	32,01%	-19,75%
1investGold	ETFGLD	29,93%	23,47%	-24,79%

BOTTOM 5 INSTRUMENTS	CODE	TOTAL RETURN	VOLATILITY	MAX DRAW DOWN
NF VM High Growth	NFEHGE	-22,11%	19,32%	-32,99%
AMI Big50 ex-SA	AMIB50	-30,24%	141,14%	-53,56%
1invest SA Property	ETFSAP	-34,50%	131,28%	-67,68%
CoreShares SAProp	CSPROP	-37,56%	41,39%	-56,01%
Satrix Property	STXPRO	-40,37%	45,53%	-58,67%

Total Return is the monthly/annual performance incorporating price performance and immediate reinvestment of dividends. Volatility is the based on daily price standard deviation and presented as a monthly/annual volatility. Maximum draw down measures the worst case return outcome for an investor over the course of the period – based on purchase and subsequent sale timing that results in the largest loss of capital.

MONTHLY VALUE TRADED FOR ALL ETFs



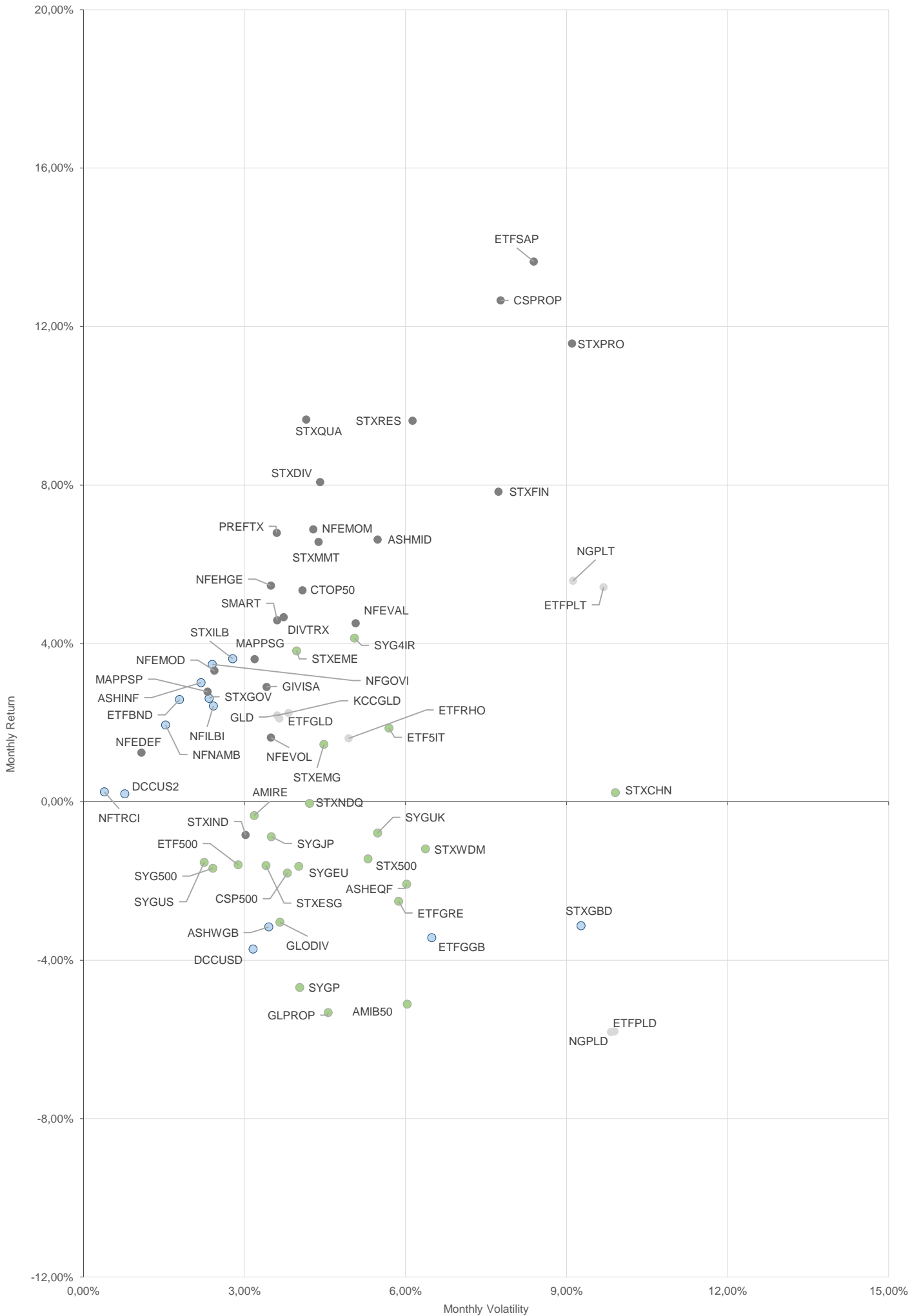
MONTHLY ETF TRADE STATISTICS | Top & Bottom Five Funds

TOP 5 INSTRUMENTS	CODE	VOLUME	VALUE	TRADES	LIQUIDITY
New Gold Issuer	GLD	4 530 990	R1 178 901 511,49	4 262	6,39%
SYGNIA ITRIX MSCI WORLD	SYGWD	5 688 140	R228 662 753,71	1 259	2,29%
1invest SA Property	ETFSAP	6 007 265	R158 630 649,48	935	24,82%
Satrix SWIX Top 40	STXSWX	6 819 228	R76 271 417,91	145	21,36%
Satrix DIVI Plus	STXDIV	7 198 698	R16 883 341,30	567	1,16%

BOTTOM 5 INSTRUMENTS	CODE	VOLUME	VALUE	TRADES	LIQUIDITY
KR Custodial Certificate	KCCGLD	420	R11 978 756,00	19	1,33%
2YR Dollar Custodial	DCCUS2	3 225	R4 922 070,19	48	4,24%
Dollar Custodial	DCCUSD	2 279	R3 662 276,50	35	2,68%
1INVEST S&P500 INDEX	ETF500	10 864	R3 017 669,69	173	5,57%
AMI RealEstate ex-SA	AMIRE	421	R10 825,89	20	0,51%

Volume, Value and Trades are the aggregate counts of all trade activity in the ETF for the month on the JSE equity market. This includes central order book and reported trades, but excludes creations and redemptions. Liquidity is the total volume traded expressed as a percentage of the number of listed instruments for the ETF as at the end of the month.

TOTAL RETURN VERSUS VOLATILITY



● SA EQUITY - TOP 40 ● FIXED INCOME ● SA EQUITY - OTHER ● COMMODITY ● GLOBAL EQUITY

MONTHLY DETAILED ETF INFORMATION

SA EQUITY | TOP 40

Prices in Rands

In Rands

Values in Mn's

in 000's | in Mn's

STANLIB	CODE	START	LOW	HIGH	END	1M %	DISTRIBUTION	MCAP OPEN	MCAP CLOSE	VOL	VALUE	TRADES
1invest SWIX 40	ETFSWX	10,75	10,82	11,65	11,16	3,81	--	1636,68	1703,01	0,44	4,96	120,00
1invest TOP 40	ETFT40	52,33	52,65	55,55	54,55	4,24	--	685,06	713,31	0,02	0,96	95,00

ASHBURTON	CODE	START	LOW	HIGH	END	1M %	DISTRIBUTION	MCAP OPEN	MCAP CLOSE	VOL	VALUE	TRADES
Ashburton Top 40	ASHT40	52,35	52,50	55,73	54,60	4,30	--	1373,58	1459,91	1,77	95,87	444,00

Satrix Managers	CODE	START	LOW	HIGH	END	1M %	DISTRIBUTION	MCAP OPEN	MCAP CLOSE	VOL	VALUE	TRADES
Satrix 40	STX40	52,28	52,01	55,79	54,60	4,44	--	8542,13	8795,62	4,21	226,87	1955,00
Satrix SWIX Top 40	STXSWX	10,76	10,76	11,35	11,18	3,90	--	367,11	356,84	6,82	76,27	145,00

SYGNIA ITRIX	CODE	START	LOW	HIGH	END	1M %	DISTRIBUTION	MCAP OPEN	MCAP CLOSE	VOL	VALUE	TRADES
Sygnia Itrix SWIX40	SYGSW4	10,83	10,90	11,39	11,25	3,88	--	207,31	215,35	0,06	0,72	43,00
Sygnia Itrix Top 40	SYGT40	53,19	53,38	56,50	55,44	4,23	--	301,84	314,61	0,12	6,44	107,00

SA EQUITY | OTHER

Prices in Rands

In Rands

Values in Mn's

in 000's | in Mn's

STANLIB	CODE	START	LOW	HIGH	END	1M %	DISTRIBUTION	MCAP OPEN	MCAP CLOSE	VOL	VALUE	TRADES
1invest SA Property	ETFSAP	24,49	24,42	29,77	27,83	13,64	--	385,18	673,57	6,01	158,63	935,00

ASHBURTON	CODE	START	LOW	HIGH	END	1M %	DISTRIBUTION	MCAP OPEN	MCAP CLOSE	VOL	VALUE	TRADES
Ashburton Mid Cap	ASHMID	6,04	5,76	6,80	6,44	6,62	--	359,38	392,84	3,17	19,99	428,00

CORESHARES	CODE	START	LOW	HIGH	END	1M %	DISTRIBUTION	MCAP OPEN	MCAP CLOSE	VOL	VALUE	TRADES
CoreShares DivTrax	DIVTRX	19,96	20,01	22,31	20,89	4,66	--	127,85	133,81	0,25	5,23	188,00
CORESHARESTOP50	CTOP50	22,68	22,77	24,30	23,89	5,34	--	1258,02	1325,14	0,17	4,06	157,00
CoreShares SciBeta M-FI	SMART	38,19	38,25	40,88	39,94	4,58	--	95,67	100,06	0,05	2,14	92,00
CoreShares PrefTrax	PREFTX	6,92	6,70	7,50	7,39	6,79	--	272,16	290,65	1,12	8,06	246,00
CoreShares SProp	CSPROP	7,74	7,58	9,19	8,72	12,66	--	176,64	199,00	0,90	7,61	309,00

NEWFUNDS	CODE	START	LOW	HIGH	END	1M %	DISTRIBUTION	MCAP OPEN	MCAP CLOSE	VOL	VALUE	TRADES
NEWFUNDS EQUITY MOM	NFEMOM	33,59	33,71	36,29	35,90	6,88	--	285,19	304,80	0,47	16,62	93,00
Newfunds MAPPSP Growth	MAPPSP	22,47	22,54	24,15	23,28	3,60	--	40,60	42,06	0,06	1,48	47,00
Newfunds MAPPSP Protect	MAPPSP	39,15	39,16	41,11	40,24	2,78	--	43,41	44,62	0,01	0,44	40,00
NewFunds S&P GIVI SA T50	GIVISA	36,17	36,31	38,15	37,22	2,90	--	74,41	76,57	0,03	1,15	49,00
NEWFUNDS SHARIA TOP40	NFSH40	3,24	3,25	3,54	3,49	7,72	--	50,46	54,36	0,24	0,82	79,00
NF Equity Value	NFEVAL	7,98	8,03	8,64	8,34	4,51	--	115,86	121,08	0,31	2,57	46,00
NF Low Volatility	NFEVOL	8,64	8,53	8,84	8,78	1,62	--	104,99	106,70	0,17	1,50	49,00
NF VM Defensive Equity	NFEDEF	9,67	9,70	9,84	9,79	1,24	--	50,13	50,75	0,05	0,53	12,00
NF VM High Growth	NFEHGE	8,06	8,08	8,54	8,50	5,46	--	59,44	62,69	0,27	2,28	42,00
NF VM Moderate Equity	NFEMOD	8,75	8,77	9,04	9,04	3,31	--	48,69	50,30	0,08	0,74	19,00

Satrix Managers	CODE	START	LOW	HIGH	END	1M %	DISTRIBUTION	MCAP OPEN	MCAP CLOSE	VOL	VALUE	TRADES
Satrix DIVI Plus	STXDIV	2,23	2,22	2,44	2,41	8,07	--	1385,70	1495,14	7,20	16,88	567,00
Satrix FINI	STXFIN	11,24	11,14	12,48	12,12	7,83	--	595,01	656,14	2,71	32,14	574,00
Satrix INDI	STXIND	75,80	70,50	82,00	75,16	-0,84	--	1806,96	2092,34	0,29	22,05	425,00
Satrix Momentum	STXMMT	9,60	9,61	10,29	10,23	6,56	--	26,95	28,72	0,09	0,88	69,00
Satrix Property	STXPRO	7,26	7,13	8,60	8,10	11,57	--	122,49	137,47	1,64	13,09	487,00
Satrix Quality SA	STXQUA	7,15	7,10	7,87	7,84	9,65	--	68,90	75,55	0,27	2,01	108,00
Satrix RAFI 40	STXRAF	13,63	13,50	14,60	14,30	4,92	--	810,68	850,52	0,59	8,41	210,00
Satrix RESI	STXRES	53,45	53,82	60,00	58,59	9,62	--	571,27	514,89	0,52	30,05	462,00

GLOBAL EQUITY

Prices in Rands

In Rands

Values in Mn's

in 000's | in Mn's

STANLIB	CODE	START	LOW	HIGH	END	1M %	DISTRIBUTION	MCAP OPEN	MCAP CLOSE	VOL	VALUE	TRADES
1invest Global REIT	ETFGRE	17,90	16,60	18,69	17,45	-2,51	--	103,36	103,73	0,17	3,06	209,00
1invest MSCI World	ETFWLD	54,14	52,41	68,00	53,56	-1,07	--	113,26	114,19	0,05	2,73	128,00
1INVEST S&P500 INDEX	ETF500	280,29	261,01	299,00	275,84	-1,59	--	54,63	53,77	0,01	3,02	173,00
1invest S&P500 IT	ETF5IT	11,80	11,18	12,32	12,02	1,86	--	335,70	360,23	2,10	24,92	520,00

ASHBURTON	CODE	START	LOW	HIGH	END	1M %	DISTRIBUTION	MCAP OPEN	MCAP CLOSE	VOL	VALUE	TRADES
Ashburton Global 1200	ASHEQF	58,54	55,50	60,75	57,32	-2,08	--	940,68	1029,98	0,99	57,29	559,00

CLOUD ATLAS	CODE	START	LOW	HIGH	END	1M %	DISTRIBUTION	MCAP OPEN	MCAP CLOSE	VOL	VALUE	TRADES
AMI Big50 ex-SA	AMIB50	8,80	8,20	9,00	8,35	-5,11	--	6,35	6,03	0,08	0,68	63,00
AMI RealEstate ex-SA	AMIRE	25,99	25,00	25,99	25,90	-0,35	--	2,16	2,15	0,00	0,01	20,00

CORESHARES	CODE	START	LOW	HIGH	END	1M %	DISTRIBUTION	MCAP OPEN	MCAP CLOSE	VOL	VALUE	TRADES
CoreShares Global Prop	GLPROP	37,78	34,82	37,79	35,77	-5,32	--	426,12	421,34	1,32	48,10	447,00
CoreShares GlobalDivTrax	GLODIV	14,48	13,51	14,85	14,04	-3,04	--	711,28	689,67	1,89	26,71	387,00
CoreShares S&P 500	CSP500	55,70	53,36	56,92	54,70	-1,80	--	1198,68	1177,16	0,38	21,22	579,00

Satrix Managers	CODE	START	LOW	HIGH	END	1M %	DISTRIBUTION	MCAP OPEN	MCAP CLOSE	VOL	VALUE	TRADES
Satrix MSCI EMG Markets	STXEMG	51,87	50,20	53,84	52,62	1,45	--	1186,41	1340,37	4,14	216,47	1541,00
Satrix MSCI World Feeder	STXWDM	54,57	52,15	58,10	53,92	-1,19	--	3932,87	3934,55	4,36	235,91	1193,00
Satrix Nasdaq 100	STXNDQ	106,51	104,00	110,25	106,47	-0,04	--	1962,01	2014,51	0,78	82,70	1272,00
Satrix S&P 500 Feeder	STX500	56,29	53,70	58,75	55,48	-1,44	--	1411,42	1418,85	1,30	72,70	942,00
Satrix MSCI China	STXCHN	55,83	50,80	58,88	55,96	0,23	--	991,35	1127,96	3,07	166,01	2074,00
Satrix MSCI EM ESG	STXEME	46,76	46,16	49,96	48,54	3,81	--	46,97	87,59	0,88	41,88	167,00
Satrix MSCI World ESG	STXESG	48,49	46,00	50,15	47,71	-1,61	--	73,13	71,96	0,16	7,51	138,00

SYGNIA ITRIX	CODE	START	LOW	HIGH	END	DISTRIBUTION	MCAP OPEN	MCAP CLOSE	VOL	VALUE	TRADES	
Sygnia Itrix 4Ind Rev Gb	SYG4IR	44,04	42,80	47,88	45,86	-1,44	--	1533,32	1738,85	3,42	151,59	1538,00
SYGNIA ITRIX EUROSTOXX50	SYGEU	65,71	62,16	67,00	64,64	-1,63	--	2754,76	2709,90	0,56	36,20	749,00
SYGNIA ITRIX FTSE100	SYGUK	131,37	125,82	145,00	130,33	-0,79	--	796,10	809,35	0,14	18,83	457,00
Sygnia Itrix Gbl Pro	SYGYP	39,21	36,58	39,46	37,37	-4,69	--	471,82	509,47	2,52	94,44	428,00
SYGNIA ITRIX MSCI JAPAN	SYGJP	15,99	15,29	16,07	15,85	-0,88	--	872,60	701,49	2,23	34,87	374,00
SYGNIA ITRIX MSCI US	SYGUS	53,44	51,95	54,00	52,62	-1,53	--	5784,56	5608,98	2,30	122,17	969,00
SYGNIA ITRIX MSCI WORLD	SYGWD	40,35	39,15	41,50	40,02	-0,82	--	9813,87	9925,70	5,69	228,66	1259,00
Sygnia Itrix S&P 500	SYG500	56,53	54,20	58,43	55,58	-1,68	--	1877,43	2012,62	2,52	142,16	616,00

MONTHLY DETAILED ETF INFORMATION

COMMODITIES

		Prices in Rands				In Rands		Values in Mn's		in 000's in Mn's		
INVEST	CODE	START	LOW	HIGH	END	1M %	DISTRIBUTION	MCAP OPEN	MCAP CLOSE	VOL	VALUE	TRADES
1investGold	ETFGLD	267,04	266,82	280,00	272,64	2,10	--	662,26	948,79	1,64	445,41	259,00
1investPalladium	ETFPLD	359,75	327,23	376,34	338,86	-5,81	--	1289,36	960,35	0,49	163,78	145,00
1investPlatinum	ETFPLT	146,28	143,88	164,93	154,21	5,42	--	4030,01	4600,86	1,38	207,06	146,00
1investRhodium	ETFRHO	2314,16	2209,00	2458,67	2351,23	1,60	--	1139,85	835,99	0,14	331,67	394,00

FIRSTRAND BANK	CODE	START	LOW	HIGH	END	1M %	DISTRIBUTION	MCAP OPEN	MCAP CLOSE	VOL	VALUE	TRADES
KR Custodial Certificate	KCCGLD	28009,50	28064,01	29030,00	28619,00	2,18	--	882,72	901,93	0,00	11,98	19,00

ABSA	CODE	START	LOW	HIGH	END	1M %	DISTRIBUTION	MCAP OPEN	MCAP CLOSE	VOL	VALUE	TRADES
New Gold Issuer	GLD	255,37	254,23	266,09	261,10	2,24	--	18202,25	18506,23	4,53	1,178,9	4262,00
New Gold Platinum	NGPLT	145,38	142,28	158,30	153,49	5,58	--	8432,04	8902,42	1,36	201,02	1146,00
NewGold Palladium	NGPLD	359,45	327,76	363,90	338,59	-5,80	--	718,79	643,22	0,42	147,71	661,00

SA & GLOBAL FIXED INCOME

		Prices in Rands				In Rands		Values in Mn's		in 000's in Mn's		
STANLIB	CODE	START	LOW	HIGH	END	1M %	DISTRIBUTION	MCAP OPEN	MCAP CLOSE	VOL	VALUE	TRADES
1invest G7 Govt Bond	ETFGGB	92,33	86,25	93,25	89,16	-3,43	--	36,05	34,81	0,06	4,98	129,00
1invest SA Bond	ETFBND	77,04	75,00	79,41	79,03	2,58	--	46,22	47,42	0,08	6,60	361,00

ASHBURTON	CODE	START	LOW	HIGH	END	1M %	DISTRIBUTION	MCAP OPEN	MCAP CLOSE	VOL	VALUE	TRADES
Ashburton World GovB	ASHWGB	8,24	7,25	8,40	7,98	-3,16	--	132,95	128,75	0,33	2,69	148,00
Ashburton Inflation	ASHINF	19,58	19,41	20,66	20,17	3,01	--	319,84	329,48	0,18	3,54	86,00

FIRSTRAND BANK LIMITED	CODE	START	LOW	HIGH	END	1M %	DISTRIBUTION	MCAP OPEN	MCAP CLOSE	VOL	VALUE	TRADES
2YR Dollar Custodial Cert	DCCUS2	1568,50	1477,00	1565,00	1489,50	-5,04	8,03	119,21	113,20	0,00	4,88	43,00
Dollar Custodial Cert	DCCUSD	1663,50	1577,30	1666,30	1591,05	-4,36	10,76	141,40	135,24	0,00	3,66	35,00

NEWFUNDS	CODE	START	LOW	HIGH	END	1M %	DISTRIBUTION	MCAP OPEN	MCAP CLOSE	VOL	VALUE	TRADES
NEWFUNDS TRACI 3-M	NFTRCI	27,57	26,71	27,79	27,64	0,25	--	229,29	229,87	0,90	24,75	185,00
NEWFUNDS GOVI	NFGOVI	71,33	70,74	74,20	73,30	2,76	0,50	2276,79	2339,67	2,75	199,40	2498,00
NEWFUNDS ILBI	NFILBI	68,75	68,31	71,62	70,25	2,18	0,16	61,88	98,35	0,07	4,57	82,00
NewFunds Namibia Bond	NFNAMB	15,14	14,92	15,74	15,47	2,18	--	270,43	276,33	0,05	0,74	28,00

Satrix	CODE	START	LOW	HIGH	END	1M %	DISTRIBUTION	MCAP OPEN	MCAP CLOSE	VOL	VALUE	TRADES
Satrix ILBI	STXILB	5,82	5,71	6,15	6,03	3,61	--	145,59	150,84	1,92	11,33	111,00
Satrix SA Bond Portfolio	STXGOV	7,40	7,35	7,81	7,66	3,51	--	229,26	260,29	5,22	40,02	160,00
Satrix Global Aggregate Bond	STXGBD	43,98	41,17	44,20	42,17	-4,12	--	26,44	42,22	0,42	17,80	69,00

The information, data and compilations, or any part thereof, which make up the JSE ETF Factsheet ("Data") is being provided to you strictly for informational purposes. JSE Limited ("JSE") reserves the right to withdraw, modify, or replace the Data (or any part thereof) at any time.

To the extent allowed by law, JSE does not (expressly, tacitly or impliedly) guarantee or warrant the availability, sequence, accuracy, completeness, reliability or any other aspect of any of the Data or that the Data contained therein is up to date. To the extent allowed by law, neither the JSE nor any of its directors, officers, employees, contractors, agents or representatives are liable to any way to the reader/user or to any other natural or juristic person (Person) for any loss or damage as a result of any errors contained in the specification, for any loss arising from use of, or reliance on the Data in this JSE ETF Factsheet or any actions taken or not taken by or behalf of any Person in reliance on any Data in this JSE ETF Factsheet. You may not copy, reproduce, redistribute, alter or transmit any Data without the prior written consent of the JSE.

The Johannesburg Stock Exchange prides itself on a 130 year history as an effective, reputable trading platform. We are currently ranked the 19th largest stock exchange in the world based on market capitalization, and the largest exchange on the African continent. The JSE offers secure and efficient primary and secondary capital markets across a diverse range of asset classes which include equities, commodities, currencies, interest rates and bonds. We are the exchange of choice for local and international investors looking for investment opportunities across leading capital markets in South Africa and the broader African continent.

The JSE's achievements escalate through to this year's 20th anniversary of the first ETF listing on the local Exchange Traded Fund (ETF) market. Today, the ETF market capitalization is close to R90bn with over 70 listed ETFs on the JSE Main Board.

Our Primary Markets Team is a key access point for existing and/or potential issuers to gain exposure to local and international investor capital. The team focuses on listing companies and instruments on the Equity (Main Board and AltX) or Debt Market and aids in product development.

Contact the team: listingontheJSE@jse.co.za

Our Information Services Team works to deliver world class market data to our clients. This data can often be customized on request providing our clients with the exact Intel required to make business and portfolio decisions.

We offer live, delayed, end of day, reference and historical market data for:

- Equities
- Indices
- Equity Derivatives
- Commodity Derivatives
- Commodity Derivatives
- Currency Derivatives
- Interest Rate Derivatives
- Bonds
- Market Announcements (SENS)

We have nearly 170 indices across a wide variety of methodologies and investment criteria.

Our partnership with FTSE Russell includes:

- FTSE/JSE All Share
- FTSE/JSE Top 40
- FTSE/JSE ESG
- FTSE/JSE Factor Indices
- FTSE/JSE Shariah
- FTSE/JSE RAFI and many more

We develop customised indices to suit your needs.

- Our other service offerings include:
- Bond ETP data
- Tick data
- Corporate Actions
- Business Intelligence Reports
- Valuations

Contact the team: mdclients@jse.co.za