



## Data Feed Policy





# Terminology

## Capitalized terms

**MDP** = Market Data Policies

**IMDP** = Indices Market Data Policies

**IDA** = Indices Data Agreement

**JDA** = JSE Data Agreement

**PSF** = Products and Services Form

**EOD** = End of Day





# Data Feed Policy

- What is a data feed?
- Conditions (approval) in relation to live data/ specified end of day data
- Data feed application form





# What is a Data Feed?





## What is a Data Feed?

A data feed is a way of delivering structured data from one system to another.

Live, intra-day, and end of day data can be provided via data feed and includes:

- live streaming data
- news feeds, and
- end of day files.

Data feeds follow set specifications and are provided in varying formats including:

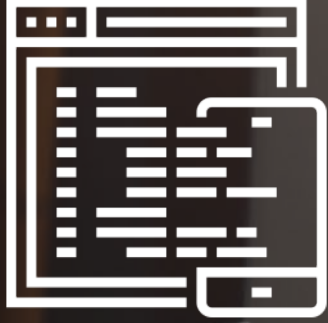
- CSV,
- plain text (txt), and
- XML.



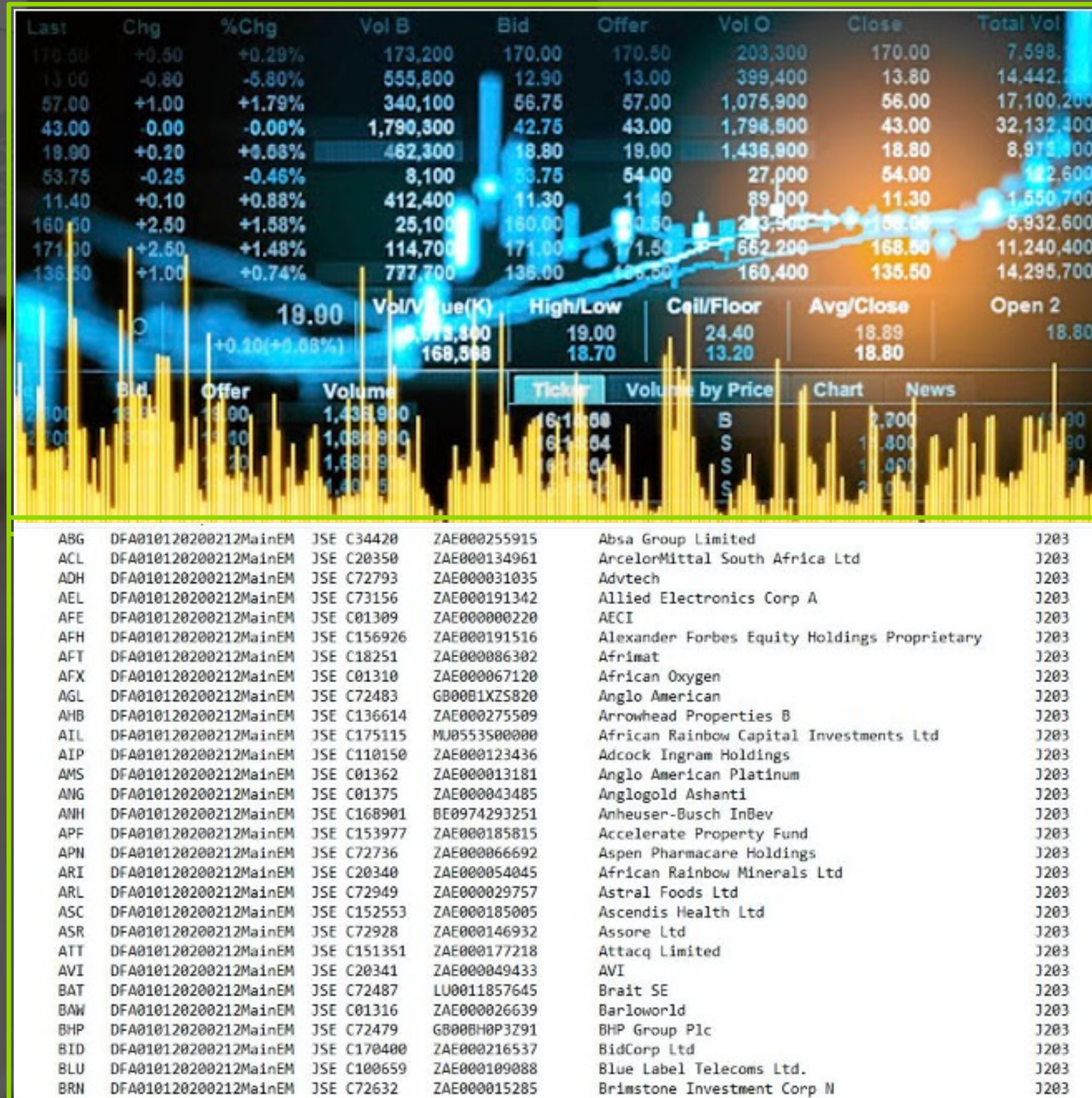


## Common JSE Data Feeds





# Common JSE Data Feeds



## SENS Headlines

To see unlimited SENS history and get SENS alerts, sign up for a **MySharenet** subscription.

### SENS Headline

Price last updated: 29 January 2020 09:44

CALGRO M3 DEVELOPMENTS LIMITED - Interest payment notifications - CGRI

ORION MINERALS LIMITED - Appendix 5B

NEDBANK LIMITED - Interest payment and capital redemption notifications - BINBK

AVIOR CAPITAL MARKETS HOLDINGS LIMITED - Trading Statement

SATRIX COLLECTIVE INVESTMENT SCHEME - Partial Delisting Of Satrix Stxemg Securities - STXEMG





## Data Feed Policy purpose





## Data Feed Policy aim

The Policy aims to understand the use case and determine where a direct agreement with the JSE is required.

Approval process:

In relation to live data:

Approval is required before any live data is made available to a proposed data feed user

In relation to specified EOD data:

Pre-approval is not needed, however, approval is needed by no later than 10 business days after the data feed user starts to use the Specified end of day data





## Important considerations in the data feed policy





## Important considerations in the data feed policy

### 1. Direct agreement with the JSE is required if:

- Data will be used for non-display purposes
- Data will be used for external distribution

### 2. The contracted user to furnish end user (proposed data feed client) with a copy of:

- Data feed policy
- Non-display policy
- Data feed application form.

### 3. The data feed form should be completed and sent to [mdsupport@jse.co.za](mailto:mdsupport@jse.co.za)





## Data Feed Application Form





## Data Feed Application Form

The proposed data feed user must clearly indicate which data will be used and whether such data will be used.

In relation to  
internal display  
use only



In relation to  
external display  
distribution only



In relation to  
Non-Display  
Use



In a combination of  
any of the above  
uses





# Data Feed Application Form

DATA FEED APPLICATION FORM		
Company Name ("Data Feed User"):	ABC Hedge Fund	
Contact Name:	Joe Bloggs	
Contact Telephone Number:	+44 207 555 5555	
Contact Email Address:	Joe.bloggs@abchf.co.uk	
Address:	London	
	3 Queen Victoria Street	
	EC4N 4TQ	
Country:	United Kingdom	
1. Source of Data Feed		
Bloomberg / Thomson Reuters / IRESS etc.		
2. DATA TYPE DETAILS		
	Live	
	End of Day	
Equities	<input type="checkbox"/> Level 1	<input checked="" type="checkbox"/> Level 2
Equity Derivatives	<input checked="" type="checkbox"/>	
Commodity Derivatives	<input type="checkbox"/>	
Currency Derivatives	<input type="checkbox"/>	
Interest Rate		<input type="checkbox"/>
Indices	<input checked="" type="checkbox"/>	
SENS	<input type="checkbox"/>	
Note 1: One or more may be selected.		

Data feed user  
information

Data feed provider  
information

Data type +  
frequency





# Data Feed Application Form

Definition: Non-Display policy  
- clause 21.3.5 + 21.3.6

3. DATA USE DETAILS <sup>2</sup>		List the data type that will used per data use	Number of Units
Internal Display Use	<input checked="" type="checkbox"/>	Live Equity Derivatives	44 terminals
External Display Distribution	<input type="checkbox"/>		
Non-Display Use	<input checked="" type="checkbox"/>	Live Level 2 Equities+Live Indices	3 ND Units

**Note 2:** One or more may be selected. Refer to the Data Feed Policy to assess the correct classification of use.

4. Explain clearly the permissioning controls that will be put in place

DACS / MDMS / EMRS / XYZ Enablement/Control / Permissioning system etc.

5. Where "Non-Display Use" is selected in 2 above, please explain clearly the nature/type of Non-Display Use and the extent of such use by the Data Feed User (and any Group Company)

Algorithmic trading. Risk management. Index Arbitrage.

We hereby represent and warrant that (i) the information contained in this Data Feed Application Form is true and correct in all respects as at the date of signature and (ii) we have been provided with a copy of the JSE's Data Feed Policy and the JSE's Non-Display Policy].

The above representations and warranties are acknowledgements of fact by the party which completes and provides this Data Feed Application Form to the JSE (that is the proposed Data Feed User). The proposed Data Feed User must read the above carefully and make sure that each statement is true and correct as the proposed Data Feed User's right to claim that any statement is not true and correct will be limited. The JSE may also have claims and other rights against the proposed Data Feed User if any statement is not true and correct.

Signed at \_\_\_\_\_ on \_\_\_\_\_ 20\_\_\_\_

\_\_\_\_\_  
For the Data Feed User, duly authorised

\_\_\_\_\_  
full name and designation of signatory

Data use details

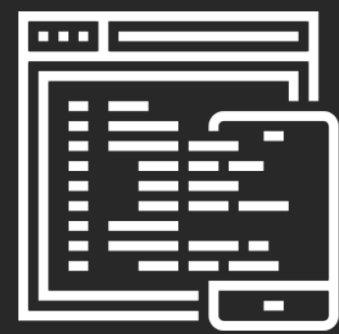
Permissioning systems

Detail related to non-display usage

T&C's + warranties

Date + Signature





Thank you





MDClients@jse.co.za