

AUGUST'S HIGHLIGHTS

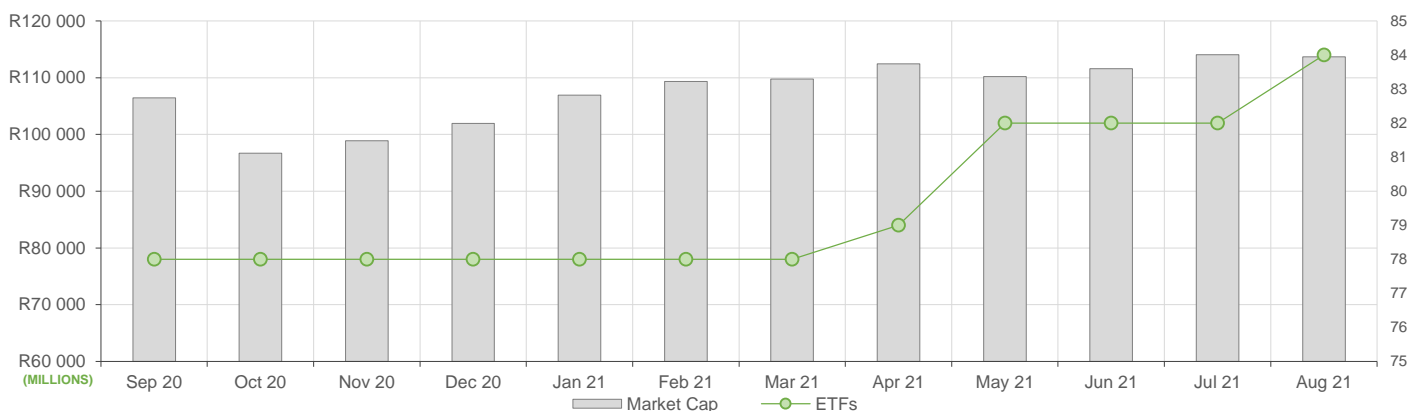
August showed slightly decreased ETF activity compared to July, here is what we have seen:

- ETF Market Capitalization showed a marginal decrease month-on-month, with a total of R113.6bn. ETF unit creations were lower compared to the previous month, with sizeable redemptions in commodity ETFs.
- Month-on-month ETF value traded lower compared to July's activity, reflecting roughly R5bn in total value traded during the month.
- Month-on-Month ETF returns showed positive performances across most global equity ETFs.

NEW LISTINGS AND DELISTINGS

ETF	CODE	ISSUER	EVENT	DATE
Sygnia Itrix SOL H150	SYGH	SYGNIA ITRIX (RF) PROP. LTD	Listing	--
Satrix I & D ETF	STXID	Satrix Managers (RF) (Pty) Ltd	Listing	--

MARKET CAPITALISATION ANALYSIS | Total Industry



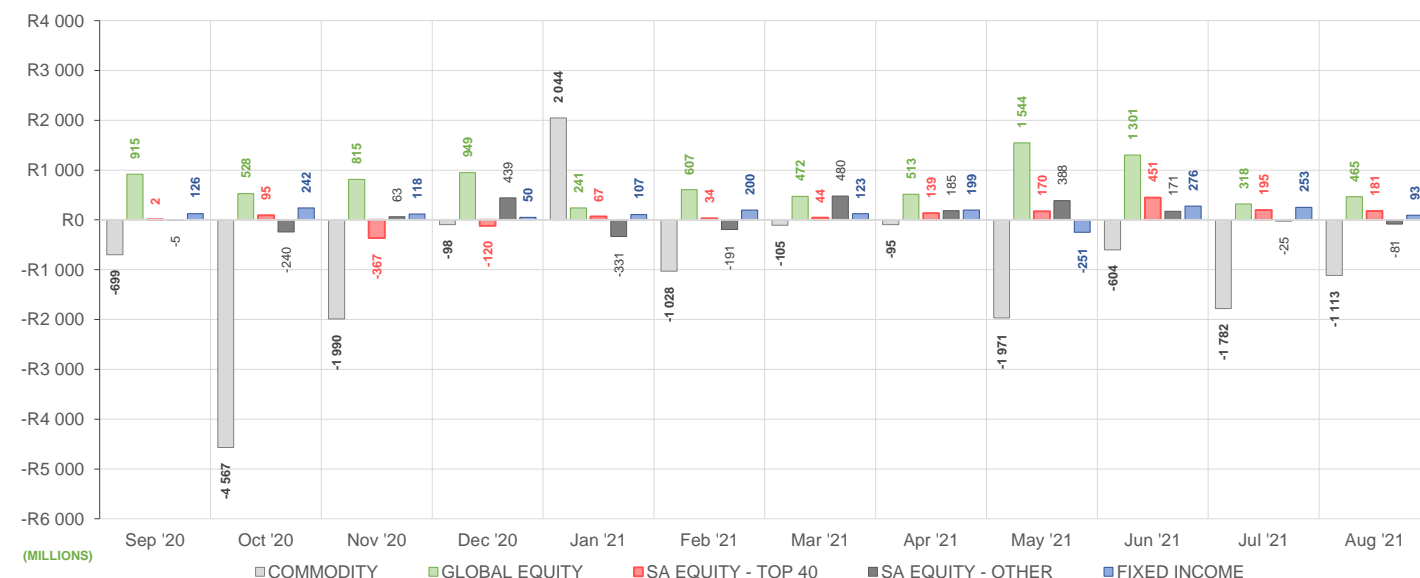
NET DAILY EXCHANGE CREATIONS AND REDEMPTIONS | Top & Bottom Five ETFs

TOP 5 INSTRUMENTS	CODE	TOTAL DAILY CREATIONS	TOTAL DAILY REDEMPTIONS	NET MONTHLY CREATIONS
Sygnia Itrix SOL H150	SYGH	R302 421 015	---	R302 421 015
NEWFUNDS GOVI ETF	NFGOVI	R154 897 500	---	R154 897 500
Ashburton Top 40 ETF	ASHT40	R105 960 500	---	R105 960 500
Sygnia Itrix 4Ind Rev Gb	SYG4IR	R95 237 500	---	R95 237 500
Sygnia Itrix MSCI EM 50	SYGEMF	R85 610 500	---	R85 610 500

BOTTOM 5 INSTRUMENTS	CODE	TOTAL DAILY CREATIONS	TOTAL DAILY REDEMPTIONS	NET MONTHLY CREATIONS
Satrix FINI Portfolio	STXFIN	---	-R67 776 000	-R67 776 000
Sygnia Itrix MSCI World	SYGWD	---	-R88 950 000	-R88 950 000
Sygnia Itrix S&P 500 ETF	SYG500	---	-R236 109 321	-R236 109 321
1InvestGold ETF	ETFGLD	---	-R386 573 500	-R386 573 500
New Gold Platinum ETF	NGPLT	R14 309 000	-R649 517 000	-R635 208 000

Considers the daily update to total number of issued units listed on the exchange over the calendar month, with Creations representing a day-on-day increase in total number of listed units, and Redemptions representing a decrease. An average day-on-day price is used to estimate the ZAR value of each net daily movement. No secondary market transactions are considered.

NET MONTHLY EXCHANGE CREATIONS AND REDEMPTIONS



MONTHLY ETF PERFORMANCE | Top & Bottom Five ETFs

TOP 5 INSTRUMENTS	CODE	TOTAL RETURN	VOLATILITY	MAX DRAW DOWN
Satrix FINI Portfolio	STXFIN	11,76%	4,57%	-1,28%
1invest SA Property ETF	ETFSAP	7,77%	7,22%	-4,25%
Satrix Property Portfolio	STXPRO	6,24%	2,85%	-1,15%
CoreShares SAProp	CSPROP	6,10%	3,66%	-1,62%
CoreShares PrefTrax	PREFTX	5,17%	2,85%	-1,39%

BOTTOM 5 INSTRUMENTS	CODE	TOTAL RETURN	VOLATILITY	MAX DRAW DOWN
AMI Big50 ex-SA ETF	AMIB50	-5,37%	5,91%	-8,25%
CoreShares DivTrax	DIVTRX	-5,69%	4,92%	-8,12%
NewGold Palladium ETF	NGPLD	-6,32%	8,61%	-11,19%
1investPalladium ETF	ETFPLD	-6,60%	8,78%	-11,27%
1investRhodium ETF	ETFRHO	-14,75%	10,50%	-17,48%

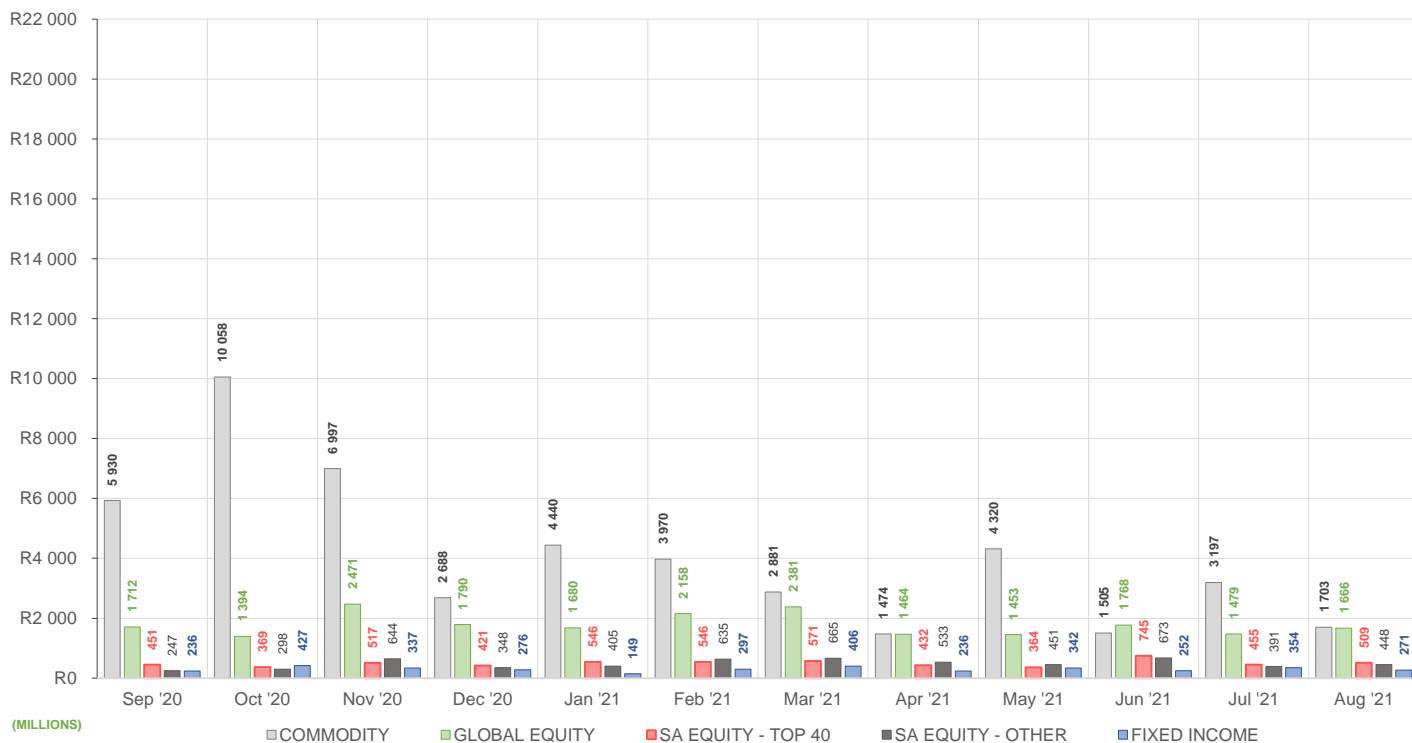
ROLLING 12-MONTH ETF PERFORMANCE | Top & Bottom Five ETFs

TOP 5 INSTRUMENTS	CODE	TOTAL RETURN	VOLATILITY	MAX DRAW DOWN
CoreShares SAProp	CSPROP	56,59%	22,02%	-11,17%
NF Equity Value ETF	NFEVAL	56,44%	19,68%	-11,64%
1invest SA Property ETF	ETFSAP	50,48%	25,95%	-13,04%
Satrix FINI Portfolio	STXFIN	50,24%	25,92%	-11,80%
Satrix Property Portfolio	STXPRO	50,08%	24,77%	-17,39%

BOTTOM 5 INSTRUMENTS	CODE	TOTAL RETURN	VOLATILITY	MAX DRAW DOWN
Satrix MSCI China ETF	STXCHN	-20,25%	26,41%	-30,69%
KR Custodial Certificate	KCCGLD	-21,03%	76,78%	-37,92%
1investGold ETF	ETFGLD	-21,11%	16,79%	-26,06%
New Gold Issuer Ltd	GLD	-21,36%	16,14%	-24,99%
AMI Big50 ex-SA ETF	AMIB50	-26,03%	82,14%	-53,54%

Total Return is the monthly/annual performance incorporating price performance and immediate reinvestment of dividends. Volatility is the based on daily price standard deviation and presented as a monthly/annual volatility. Maximum draw down measures the worst case return outcome for an investor over the course of the period – based on purchase and subsequent sale timing that results in the largest loss of capital.

MONTHLY VALUE TRADED FOR ALL ETFs



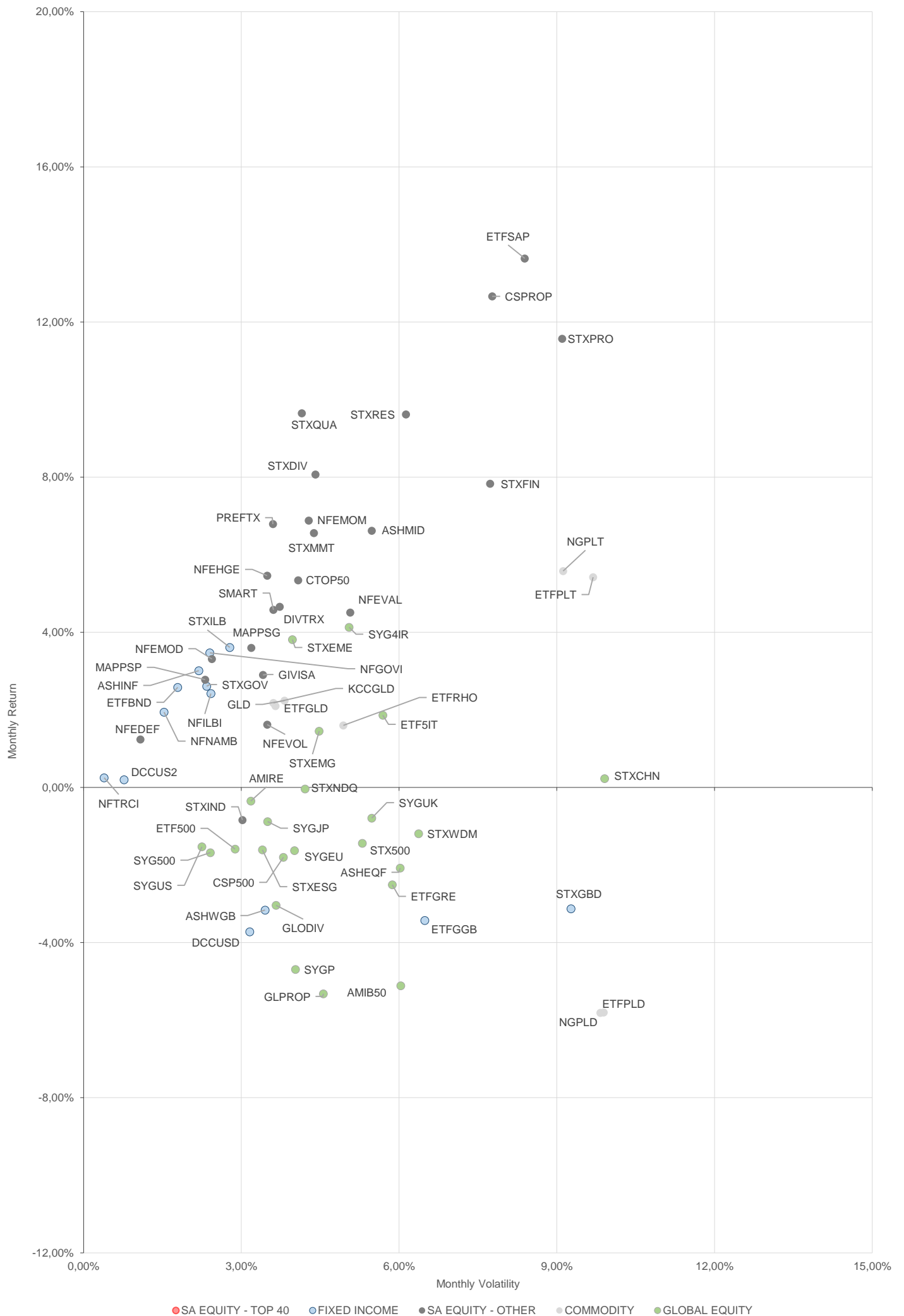
MONTHLY ETF TRADE STATISTICS | Top & Bottom Five Funds

TOP 5 INSTRUMENTS	CODE	VOLUME	VALUE	TRADES	LIQUIDITY
New Gold Platinum ETF	NGPLT	6 109 419	R869 499 921,50	1 227	11,44%
Satrix MSCI World Feeder	STXWDM	6 109 809	R388 957 302,30	1 948	6,62%
Satrix 40 Portfolio	STX40	5 468 432	R337 729 335,00	2 608	3,09%
Satrix FINI Portfolio	STXFIN	6 029 115	R84 261 694,49	589	10,13%
Satrix DIVI Plus Portfolio	STXDIV	12 379 620	R35 426 526,85	945	1,94%

BOTTOM 5 INSTRUMENTS	CODE	VOLUME	VALUE	TRADES	LIQUIDITY
Dollar Custodial Cert	DCCUSD	2 940	R4 510 259,90	15	2,18%
2YR Dollar Custodial Cert	DCCUS2	2 472	R3 587 465,00	12	1,64%
KR Custodial Certificate	KCCGLD	109	R2 912 871,00	12	0,35%
Newfunds MAPPSP Protect	MAPPSP	5 748	R250 180,97	41	0,52%
AMI RealEstate ex-SA ETF	AMIRE	NULL	NULL	NULL	NULL

Volume, Value and Trades are the aggregate counts of all trade activity in the ETF for the month on the JSE equity market. This includes central order book and reported trades, but excludes creations and redemptions. Liquidity is the total volume traded expressed as a percentage of the number of listed instruments for the ETF as at the end of the month.

TOTAL RETURN VERSUS VOLATILITY



● SA EQUITY - TOP 40 ● FIXED INCOME ● SA EQUITY - OTHER ● COMMODITY ● GLOBAL EQUITY

MONTHLY DETAILED ETF INFORMATION

COMMODITIES

		Prices in Rands				In Rands		Values in Mn's		in 000's in Mn's		
INVEST ETF ISSUER (RF) LIMITED	CODE	START	LOW	HIGH	END	1M %	DISTRIBUTION	MCAP OPEN	MCAP CLOSE	VOL	VALUE	TRADES
1InvestGold ETF	ETFGLD	255,82	249,48	268,73	256,52	0,27	--	790,48	407,87	1,23	309,82	205,00
1InvestPalladium ETF	ETFPLD	375,88	340,50	383,67	349,70	-6,96	--	903,63	840,70	0,12	42,37	116,00
1InvestPlatinum ETF	ETFPLT	149,26	132,01	151,77	143,07	-4,15	--	2394,88	2238,33	0,34	48,54	144,00
1InvestRhodium ETF	ETFRHO	2689,92	2186,38	2706,54	2303,00	-14,38	--	544,45	482,49	0,01	27,20	504,00

FIRSTRAND BANK LIMITED	CODE	START	LOW	HIGH	END	1M %	DISTRIBUTION	MCAP OPEN	MCAP CLOSE	VOL	VALUE	TRADES
KR Custodial Certificate	KCCGLD	26851,50	26387,00	27906,00	26929,00	0,29	--	846,23	848,67	0,00	2,91	12,00

NEWGOLD ISSUER (RF) LIMITED	CODE	START	LOW	HIGH	END	1M %	DISTRIBUTION	MCAP OPEN	MCAP CLOSE	VOL	VALUE	TRADES
New Gold Issuer Ltd	GLD	244,65	238,30	257,06	245,37	0,29	--	16581,87	16581,60	1,39	343,52	2007,00
New Gold Platinum ETF	NGPLT	147,93	137,61	150,61	141,65	-4,25	--	8550,35	7564,11	6,11	869,20	1220,00
NewGold Palladium ETF	NGPLD	375,54	340,82	382,61	350,27	-6,73	--	647,69	604,11	0,14	47,59	121,00

SA & GLOBAL FIXED INCOME

		Prices in Rands				In Rands		Values in Mn's		in 000's in Mn's		
STANLIB COLLECTIVE INVESTMEN' CODE	CODE	START	LOW	HIGH	END	1M %	DISTRIBUTION	MCAP OPEN	MCAP CLOSE	VOL	VALUE	TRADES
1Invest G7 Govt Bond ETF	ETFGGB	85,50	82,00	90,00	84,26	-1,45	--	36,97	41,49	0,10	8,23	116,00
1Invest SA Bond ETF	ETFBND	84,05	80,05	85,53	85,10	1,25	--	50,43	51,06	0,02	1,64	113,00

ASHBURTON MANAGEMENT COMP CODE	CODE	START	LOW	HIGH	END	1M %	DISTRIBUTION	MCAP OPEN	MCAP CLOSE	VOL	VALUE	TRADES
Ashburton World GovB ETF	ASHWGB	7,50	7,40	7,92	7,46	-0,53	0,03	128,51	127,82	0,47	3,58	169,00
Ashburton Inflation ETF	ASHINF	21,25	21,07	21,76	21,56	1,46	--	393,87	399,61	0,32	6,77	122,00

FIRSTRAND BANK LIMITED	CODE	START	LOW	HIGH	END	1M %	DISTRIBUTION	MCAP OPEN	MCAP CLOSE	VOL	VALUE	TRADES
2YR Dollar Custodial Cert	DCCUS2	1450,50	1438,00	1542,00	1459,00	0,59	--	219,03	220,31	0,00	3,59	12,00
Dollar Custodial Cert	DCCUSD	1533,30	1522,10	1596,90	1536,25	0,19	--	207,00	207,39	0,00	4,50	14,00

NEWFUNDS COLLECTIVE INVESTM CODE	CODE	START	LOW	HIGH	END	1M %	DISTRIBUTION	MCAP OPEN	MCAP CLOSE	VOL	VALUE	TRADES
NEWFUNDS TRACI 3-M ETF	NFTRCI	28,21	27,16	28,42	28,30	0,32	--	234,61	235,36	0,93	26,22	184,00
NEWFUNDS GOVI ETF	NFGOVI	77,27	76,00	80,61	78,36	1,41	0,54	2736,84	2892,99	2,49	193,77	1510,00
NEWFUNDS ILBI ETF	NFILBI	75,76	75,41	77,08	76,75	1,31	0,18	106,06	107,45	0,03	2,43	118,00
NFNAM 10 Bonds	NFNAMB	16,36	16,16	16,65	16,55	1,16	--	311,04	314,65	0,01	0,23	36,00

Satrix Managers (RF) (Pty) Ltd	CODE	START	LOW	HIGH	END	1M %	DISTRIBUTION	MCAP OPEN	MCAP CLOSE	VOL	VALUE	TRADES
Satrix ILBI Portfolio	STXILB	6,53	6,31	6,60	6,55	0,31	--	274,36	275,20	1,92	12,45	433,00
Satrix Global Bond ETF	STXGBD	38,93	38,38	41,07	38,79	-0,36	--	77,91	77,63	0,10	3,82	90,00
Satrix SA Bond Portfolio	STXGOV	8,37	8,10	8,52	8,43	0,72	--	585,74	522,50	10,10	83,76	213,00

The information, data and compilations, or any part thereof, which make up the JSE ETF Factsheet ("Data") is being provided to you strictly for informational purposes. JSE Limited ("JSE") reserves the right to withdraw, modify, or replace the Data (or any part thereof) at any time.

To the extent allowed by law, JSE does not (expressly, tacitly or impliedly) guarantee or warrant the availability, sequence, accuracy, completeness, reliability or any other aspect of any of the Data or that the Data contained therein is up to date. To the extent allowed by law, neither the JSE nor any of its directors, officers, employees, contractors, agents or representatives are liable to any way to the reader/user or to any other natural or juristic person (Person) for any loss or damage as a result of any errors contained in the specification, for any loss arising from use of, or reliance on the Data in this JSE ETF Factsheet or any actions taken or not taken by or behalf of any Person in reliance on any Data in this JSE ETF Factsheet. You may not copy, reproduce, redistribute, alter or transmit any Data without the prior written consent of the JSE.

The Johannesburg Stock Exchange prides itself on a 130 year history as an effective, reputable trading platform. We are currently ranked the 19th largest stock exchange in the world based on market capitalization, and the largest exchange on the African continent. The JSE offers secure and efficient primary and secondary capital markets across a diverse range of asset classes which include equities, commodities, currencies, interest rates and bonds. We are the exchange of choice for local and international investors looking for investment opportunities across leading capital markets in South Africa and the broader African continent.

The JSE's achievements escalate through to this year's 20th anniversary of the first ETF listing on the local Exchange Traded Fund (ETF) market. Today, the ETF market capitalization is close to R90bn with over 70 listed ETFs on the JSE Main Board.

Our Primary Markets Team is a key access point for existing and/or potential issuers to gain exposure to local and international investor capital. The team focuses on listing companies and instruments on the Equity (Main Board and AltX) or Debt Market and aids in product development.

Contact the team: listingontheJSE@jse.co.za

Our Information Services Team works to deliver world class market data to our clients. This data can often be customized on request providing our clients with the exact Intel required to make business and portfolio decisions.

We offer live, delayed, end of day, reference and historical market data for:

- Equities
- Indices
- Equity Derivatives
- Commodity Derivatives
- Commodity Derivatives
- Currency Derivatives
- Interest Rate Derivatives
- Bonds
- Market Announcements (SENS)

We have nearly 170 indices across a wide variety of methodologies and investment criteria.

Our partnership with FTSE Russell includes:

- FTSE/JSE All Share
- FTSE/JSE Top 40
- FTSE/JSE ESG
- FTSE/JSE Factor Indices
- FTSE/JSE Shariah
- FTSE/JSE RAFI and many more

We develop customised indices to suit your needs.

- Our other service offerings include:
- Bond ETP data
- Tick data
- Corporate Actions
- Business Intelligence Reports
- Valuations

Contact the team: mdclients@jse.co.za