

JULY'S HIGHLIGHTS

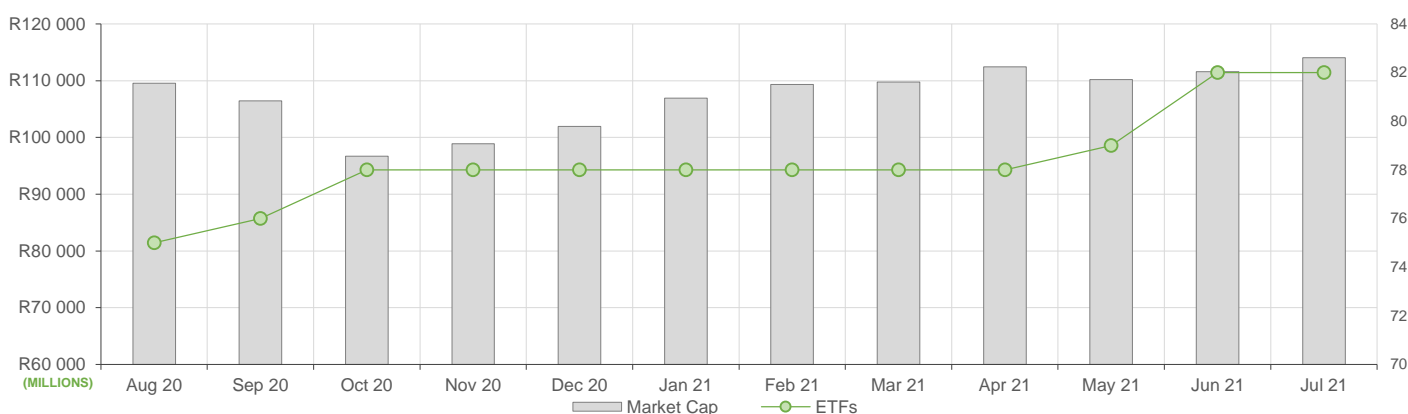
July showed increased ETF activity compared to June, here is what we have seen:

- ETF Market Capitalization showed a slight increase month-on-month to a total of R114bn. ETF unit creations were lower compared to the previous month, with sizeable redemptions in commodity ETFs.
- Month-on-month ETF value traded marginally higher compared to June's activity, reflecting roughly R6.3bn in total value traded during the month.
- Month-on-Month ETF returns showed positive performances across local and most global equity ETFs.

NEW LISTINGS AND DELISTINGS

ETF	CODE	ISSUER	EVENT	DATE
Africa Sovereign Bond ETF	ASBI	Cloud Atlas	Listing	--
AMI Real Estate ETF	AMIRE	Cloud Atlas	Delisting	--

MARKET CAPITALISATION ANALYSIS | Total Industry



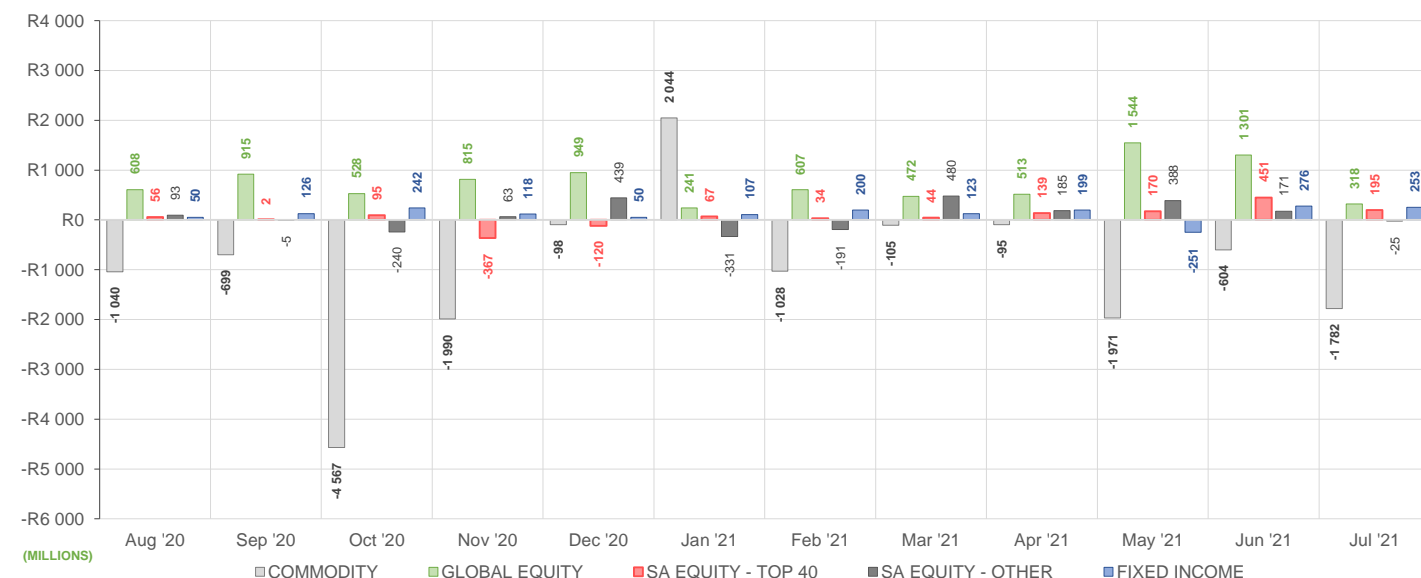
NET DAILY EXCHANGE CREATIONS AND REDEMPTIONS | Top & Bottom Five ETFs

TOP 5 INSTRUMENTS	CODE	TOTAL DAILY CREATIONS	TOTAL DAILY REDEMPTIONS	NET MONTHLY CREATIONS
Sygnia Itrix MSCI EM 50	SYGEMF	R376 469 949	---	R376 469 949
Satrix 40 Portfolio	STX40	R152 144 000	---	R152 144 000
Satrix SA Bond Portfolio	STXGOV	R123 695 000	---	R123 695 000
2YR Dollar Custodial Cert	DCCUS2	R110 306 250	---	R110 306 250
1investRhodium ETF	ETFRHO	R81 296 969	---	R81 296 969

BOTTOM 5 INSTRUMENTS	CODE	TOTAL DAILY CREATIONS	TOTAL DAILY REDEMPTIONS	NET MONTHLY CREATIONS
Satrix RESI Portfolio	STXRES	---	-R185 422 000	-R185 422 000
Sygnia Itrix MSCI World	SYGWD	---	-R196 304 782	-R196 304 782
Sygnia Itrix Gbl Pro ETF	SYGP	---	-R235 354 847	-R235 354 847
1investPalladium ETF	ETFPLD	---	-R259 501 000	-R259 501 000
1investPlatinum ETF	ETFPLT	---	-R1 495 921 000	-R1 495 921 000

Considers the daily update to total number of issued units listed on the exchange over the calendar month, with Creations representing a day-on-day increase in total number of listed units, and Redemptions representing a decrease. An average day-on-day price is used to estimate the ZAR value of each net daily movement. No secondary market transactions are considered.

NET MONTHLY EXCHANGE CREATIONS AND REDEMPTIONS



MONTHLY ETF PERFORMANCE | Top & Bottom Five ETFs

TOP 5 INSTRUMENTS	CODE	TOTAL RETURN	VOLATILITY	MAX DRAW DOWN
Satrix RESI Portfolio	STXRES	9,98%	10,26%	-7,95%
NEWFUNDS SHARIA TOP40	NFSH40	9,60%	8,93%	-7,13%
Satrix SA Bond Portfolio	STXGOV	8,11%	7,51%	-2,88%
NewFunds Reitway Global Property ETF	NEWWRP	7,04%	4,72%	-3,08%
NF VM High Growth EQETF	NFEHGE	6,84%	5,98%	-4,80%

BOTTOM 5 INSTRUMENTS	CODE	TOTAL RETURN	VOLATILITY	MAX DRAW DOWN
1InvestPalladium ETF	ETFPLD	-4,00%	8,16%	-8,65%
Satrix MSCI EM ESG ETF	STXEME	-4,23%	6,17%	-5,84%
NewGold Palladium ETF	NGPLD	-4,46%	8,32%	-8,61%
Sygnia Itrix MSCI EM 50	SYGEMF	-7,28%	8,52%	-9,48%
Satrix MSCI China ETF	STXCHN	-11,18%	11,82%	-15,41%

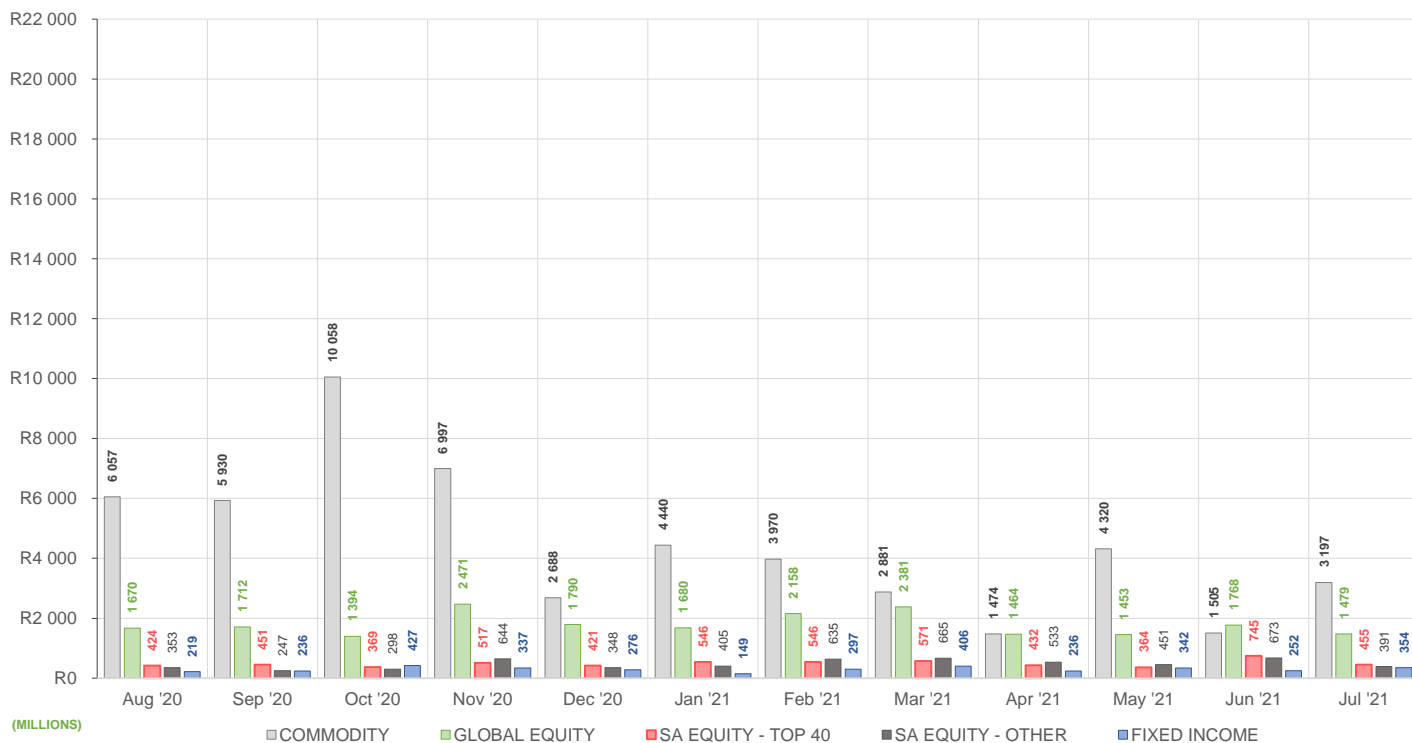
ROLLING 12-MONTH ETF PERFORMANCE | Top & Bottom Five ETFs

TOP 5 INSTRUMENTS	CODE	TOTAL RETURN	VOLATILITY	MAX DRAW DOWN
1InvestRhodium ETF	ETFRHO	85,60%	57,20%	-43,64%
NF Equity Value ETF	NFEVAL	47,42%	20,32%	-11,64%
Satrix DIVI Plus Portfolio	STXDIV	43,18%	17,86%	-8,14%
Sygnia Itrix 4Ind Rev Gb	SYG4IR	38,83%	30,33%	-23,65%
Satrix RAFI 40 Portfolio	STXRAF	38,00%	18,83%	-12,50%

BOTTOM 5 INSTRUMENTS	CODE	TOTAL RETURN	VOLATILITY	MAX DRAW DOWN
Satrix Global Bond ETF	STXGBD	-15,82%	15,88%	-22,77%
KR Custodial Certificate	KCCGLD	-20,56%	124,36%	-54,33%
New Gold Issuer Ltd	GLD	-20,74%	17,25%	-30,91%
1InvestGold ETF	ETFGLD	-20,75%	17,85%	-32,16%
AMI Big50 ex-SA ETF	AMIB50	-25,18%	82,05%	-55,19%

Total Return is the monthly/annual performance incorporating price performance and immediate reinvestment of dividends. Volatility is the based on daily price standard deviation and presented as a monthly/annual volatility. Maximum draw down measures the worst case return outcome for an investor over the course of the period – based on purchase and subsequent sale timing that results in the largest loss of capital.

MONTHLY VALUE TRADED FOR ALL ETFs



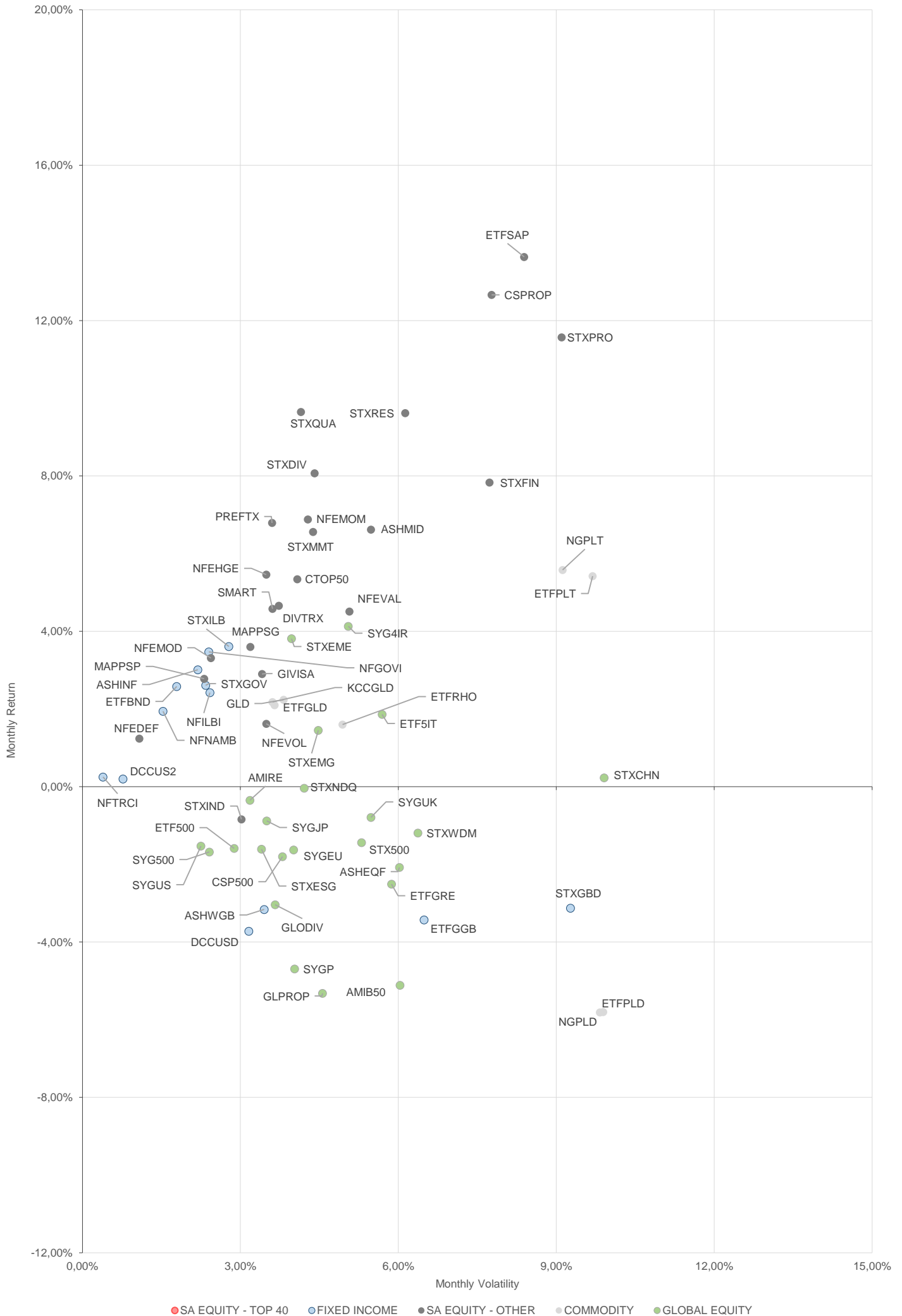
MONTHLY ETF TRADE STATISTICS | Top & Bottom Five Funds

TOP 5 INSTRUMENTS	CODE	VOLUME	VALUE	TRADES	LIQUIDITY
1InvestPlatinum ETF	ETFPLT	10 061 105	R1 557 704 930,00	149	62,71%
Sygnia Itrix MSCI World	SYGWD	7 212 554	R319 691 937,80	1 333	2,84%
Satrix 40 Portfolio	STX40	4 380 534	R267 206 919,50	2 306	2,49%
Satrix DIVI Plus Portfolio	STXDIV	16 822 425	R46 113 552,14	871	2,66%
Ashburton Mid Cap ETF	ASHMID	5 232 491	R38 800 288,67	480	6,89%

BOTTOM 5 INSTRUMENTS	CODE	VOLUME	VALUE	TRADES	LIQUIDITY
KR Custodial Certificate	KCCGLD	630	R17 069 283,00	17	2,00%
Newfunds MAPPS Protect	MAPPSP	3 199	R137 442,12	35	0,29%
AMI RealEstate ex-SA ETF	AMIRE	2 073	R41 429,57	23	2,50%
NF VM Defensive EquityETF	NFEDEF	3 673	R37 449,20	10	0,07%
NF VM Moderate Equity ETF	NFEMOD	1 421	R13 569,02	12	0,03%

Volume, Value and Trades are the aggregate counts of all trade activity in the ETF for the month on the JSE equity market. This includes central order book and reported trades, but excludes creations and redemptions. Liquidity is the total volume traded expressed as a percentage of the number of listed instruments for the ETF as at the end of the month.

TOTAL RETURN VERSUS VOLATILITY



MONTHLY DETAILED ETF INFORMATION

SA EQUITY | TOP 40

Prices in Rands

In Rands

Values in Mn's

[in 000's] in Mn's

STANLIB COLLECTIVE INVESTMEN' CODE	START	LOW	HIGH	END	1M %	DISTRIBUTION	MCAP OPEN	MCAP CLOSE	VOL	VALUE	TRADES	
1invest SWIX 40 ETF	ETFSWX	12,05	11,44	12,20	12,16	0,91	0,05	1841,23	1857,06	0,14	1,69	101,00
1invest TOP 40 ETF	ETFT40	60,58	58,49	63,63	62,92	3,86	0,17	793,67	824,33	0,08	4,89	151,00

ASHBURTON MANAGEMENT COMP CODE	START	LOW	HIGH	END	1M %	DISTRIBUTION	MCAP OPEN	MCAP CLOSE	VOL	VALUE	TRADES	
Ashburton Top 40 ETF	ASHT40	60,81	59,09	63,83	62,93	3,49	0,33	1863,93	1966,67	1,78	108,73	487,00

Satrix Managers (RF) (Pty) Ltd	CODE	START	LOW	HIGH	END	1M %	DISTRIBUTION	MCAP OPEN	MCAP CLOSE	VOL	VALUE	TRADES
Satrix 40 Portfolio	STX40	60,97	58,71	63,70	63,00	3,33	0,34	10571,71	11081,20	4,38	267,21	2306,00
Satrix SWIX Top 40 Portfolio	STXSWX	12,09	11,63	12,30	12,19	0,83	0,06	368,96	372,02	0,35	4,14	153,00

SYGNIA ITRIX (RF) PROPRIETARY L CODE	START	LOW	HIGH	END	1M %	DISTRIBUTION	MCAP OPEN	MCAP CLOSE	VOL	VALUE	TRADES	
Sygnia Itrix SWIX40 ETF	SYGSW4	12,12	11,68	12,27	12,13	0,08	0,15	162,92	163,05	0,20	2,44	44,00
Sygnia Itrix Top 40 ETF	SYGT40	61,69	59,08	64,05	63,34	2,67	0,89	371,67	381,61	0,28	17,37	127,00

SA EQUITY | OTHER

Prices in Rands

In Rands

Values in Mn's

[in 000's] in Mn's

STANLIB COLLECTIVE INVESTMEN' CODE	START	LOW	HIGH	END	1M %	DISTRIBUTION	MCAP OPEN	MCAP CLOSE	VOL	VALUE	TRADES	
1invest SA Property ETF	ETFSAP	32,21	29,00	33,39	31,28	-2,89	0,56	975,42	961,64	1,49	48,59	398,00

ASHBURTON MANAGEMENT COMP CODE	START	LOW	HIGH	END	1M %	DISTRIBUTION	MCAP OPEN	MCAP CLOSE	VOL	VALUE	TRADES	
Ashburton Mid Cap ETF	ASHMID	7,37	7,14	7,56	7,45	1,09	0,06	550,92	565,84	5,23	38,80	480,00

CORESHARES INDEX TRACKER MA CODE	START	LOW	HIGH	END	1M %	DISTRIBUTION	MCAP OPEN	MCAP CLOSE	VOL	VALUE	TRADES	
CoreShares DivTrax	DIVTRX	21,59	21,05	22,39	22,15	2,59	0,27	138,29	141,88	0,18	3,83	132,00
CORESHARESTOP50	CTOP50	26,88	26,16	28,27	27,89	3,76	0,12	1342,87	1393,32	0,25	6,79	158,00
CoreShares SciBeta M-FI	SMART	43,54	42,35	44,30	44,11	1,31	0,30	123,27	116,06	0,04	1,72	85,00
CoreShares PrefTrax	PREFTX	7,65	7,32	8,00	7,55	-1,31	0,21	328,81	324,51	1,50	11,49	222,00
CoreShares SAProp	CSPROP	10,37	9,75	10,78	10,16	-2,03	0,18	260,72	261,53	0,91	9,41	254,00

NEWFUNDS COLLECTIVE INVESTM CODE	START	LOW	HIGH	END	1M %	DISTRIBUTION	MCAP OPEN	MCAP CLOSE	VOL	VALUE	TRADES	
NEWFUNDS EQUITY MOM ETF	NFEMOM	40,76	39,48	42,49	42,21	3,56	1,07	346,06	358,37	0,51	20,92	105,00
Newfunds MAPPSP Growth	MAPPSPG	25,07	24,52	25,55	25,32	1,00	0,15	45,29	45,75	0,02	0,49	51,00
Newfunds MAPPSP Protect	MAPPSP	43,04	42,40	43,43	43,29	0,58	0,35	47,72	48,00	0,00	0,14	35,00
NewFunds S&P GIVI SA T50	GIVISA	39,35	38,39	40,77	40,36	2,57	0,15	80,95	83,03	0,12	4,87	49,00
NEWFUNDS SHARIA TOP40	NFSH40	3,87	3,75	4,31	4,23	9,30	0,01	60,28	65,88	0,64	2,66	110,00
NF Equity Value ETF	NFEVAL	10,19	9,94	10,36	10,32	1,28	0,24	185,65	188,01	4,29	43,79	78,00
NF Low Volatility ETF	NFEVOL	9,31	9,18	9,58	9,50	2,04	0,09	113,14	115,45	0,48	4,48	57,00
NF VM Defensive EquityETF	NFEDEF	10,14	10,11	10,32	10,36	2,17	0,06	52,56	53,71	0,00	0,04	10,00
NF VM High Growth EQETF	NFEHGE	9,29	9,18	9,83	9,87	6,24	0,05	68,51	72,79	0,15	1,49	60,00
NF VM Moderate Equity ETF	NFEMOD	9,51	9,36	9,67	9,84	3,47	0,06	52,92	54,75	0,00	0,01	12,00

Satrix Managers (RF) (Pty) Ltd	CODE	START	LOW	HIGH	END	1M %	DISTRIBUTION	MCAP OPEN	MCAP CLOSE	VOL	VALUE	TRADES
Satrix DIVI Plus Portfolio	STXDIV	2,74	2,63	2,84	2,82	2,92	0,03	1719,05	1786,16	16,82	46,11	871,00
Satrix FINI Portfolio	STXFIN	13,19	12,39	13,51	12,93	-1,97	0,13	827,50	831,88	2,53	32,80	653,00
Satrix INDI Portfolio	STXIND	85,63	83,20	88,07	86,69	1,24	0,25	1964,22	2057,89	0,30	25,26	862,00
Satrix Momentum Portfolio	STXMMT	11,12	10,62	11,36	11,31	1,71	0,04	31,22	31,76	0,11	1,22	57,00
Satrix Property Portfolio	STXPRO	9,46	8,90	9,88	9,30	-1,69	0,15	422,59	353,14	2,17	20,69	544,00
Satrix Quality SA Port	STXQUA	8,25	7,89	8,41	8,39	1,70	0,11	71,25	72,46	0,80	6,56	118,00
Satrix RAFI 40 Portfolio	STXRAF	16,92	16,39	17,89	17,54	3,66	0,01	986,05	1022,18	0,59	10,01	215,00
Satrix RESI Portfolio	STXRES	66,00	62,50	73,69	72,25	9,47	0,32	1108,01	1010,63	0,81	54,48	730,00

GLOBAL EQUITY

Prices in Rands

In Rands

Values in Mn's

[in 000's] in Mn's

STANLIB COLLECTIVE INVESTMEN' CODE	START	LOW	HIGH	END	1M %	DISTRIBUTION	MCAP OPEN	MCAP CLOSE	VOL	VALUE	TRADES	
1invest Global REIT ETF	ETFGRE	19,11	18,46	20,51	20,02	4,76	--	117,04	122,61	0,25	4,84	174,00
1invest MSCI World ETF	ETFWLD	56,32	54,50	62,00	57,11	1,40	--	153,41	158,42	0,09	5,18	125,00
1INVEST S&P500 INDEX ETF	ETF500	292,72	281,07	313,03	312,00	6,59	--	64,37	71,74	0,01	2,26	125,00
1invest S&P500 IT ETF	ETF5IT	11,89	11,58	14,10	13,63	14,63	--	357,04	386,12	2,49	30,58	362,00

ASHBURTON MANAGEMENT COMP CODE	START	LOW	HIGH	END	1M %	DISTRIBUTION	MCAP OPEN	MCAP CLOSE	VOL	VALUE	TRADES	
Ashburton Global 1200 FOF ETF	ASHEQF	60,17	58,90	63,50	62,59	4,02	--	1195,52	1243,60	0,44	26,70	431,00

CLOUD ATLAS (RF) PROPRIETARY CODE	START	LOW	HIGH	END	1M %	DISTRIBUTION	MCAP OPEN	MCAP CLOSE	VOL	VALUE	TRADES	
AMI Big50 ex-SA ETF	AMIB50	8,90	8,00	9,99	8,25	-7,30	--	158,17	146,62	0,01	0,12	47,00
AMI RealEstate ex-SA ETF	AMIRE	20,45	19,90	21,20	20,50	0,24	--	1,70	1,70	0,00	0,01	26,00

CORESHARES INDEX TRACKER MA CODE	START	LOW	HIGH	END	1M %	DISTRIBUTION	MCAP OPEN	MCAP CLOSE	VOL	VALUE	TRADES	
CoreShares Global Prop	GLPROP	38,15	37,94	41,37	40,28	5,58	--	449,37	474,46	0,64	25,31	402,00
CoreShares GlobalDivTrax	GLODIV	15,47	15,21	16,14	15,80	2,13	0,12	759,92	788,77	1,34	20,89	413,00
CoreShares S&P 500	CSP500	61,65	61,11	66,00	63,89	3,63	--	1314,40	1362,15	0,31	19,51	658,00

Satrix Managers (RF) (Pty) Ltd	CODE	START	LOW	HIGH	END	1M %	DISTRIBUTION	MCAP OPEN	MCAP CLOSE	VOL	VALUE	TRADES
Satrix MSCI EMG Markets	STXEMG	55,55	52,52	56,21	53,52	-3,65	--	1826,08	1775,40	1,23	66,74	939,00
Satrix MSCI World Feeder	STXWDM	60,21	58,99	65,00	61,93	2,86	--	5469,21	5705,96	3,04	186,15	1623,00
Satrix Nasdaq 100 Prtf	STXNDQ	118,26	117,49	128,18	123,60	4,52	--	2403,15	2548,74	1,03	124,75	1571,00
Satrix S&P 500 Feeder	STX500	63,22	62,31	68,00	65,49	3,59	--	1800,13	1923,71	2,14	137,93	1547,00
Satrix MSCI China ETF	STXCHN	53,40	44,45	53,13	47,43	-11,18	--	1540,94	1387,64	2,15	106,04	1966,00
Satrix MSCI EM ESG ETF	STXEME	50,15	46,98	50,36	48,03	-4,23	--	150,67	144,30	0,19	9,23	137,00
Satrix MSCI World ESG ETF	STXESG	53,77	52,97	56,82	55,37	2,98	--	107,98	116,73	0,19	10,17	171,00

SYGNIA ITRIX (RF) PROPRIETARY L CODE	START	LOW	HIGH	END	DISTRIBUTION	MCAP OPEN	MCAP CLOSE	VOL	VALUE	TRADES		
Sygnia Itrix 4Ind Rev Gb	SYG4IR	52,08	45,62	52,34	50,38	3,59	--	2398,72	2390,96	1,83	91,06	1706,00
Sygnia Itrix Eurostoxx50	SYGEU	71,44	67,85	73,06	72,18	1,04	--	3167,86	3229,55	0,84	59,14	982,00
Sygnia Itrix FTSE100	SYGUK	143,47	136,00	146,61	143,66	0,13	1,77	945,15	946,40	0,12	16,79	406,00
Sygnia Itrix Gbl Pro ETF	SYGPG	42,61	42,16	45,29	44,42	4,25	0,42	644,83	438,10	0,59	26,13	220,00
Sygnia Itrix MSCI Japan	SYGJP	15,54	15,30	16,10	15,67	0,84	0,08	779,45	785,97	0,50	7,77	282,00
Sygnia Itrix MSCI US	SYGUS	59,55	58,84	63,08	61,61	3,46	0,10	6106,50	6317,74	1,46	88,22	1031,00
Sygnia Itrix MSCI World	SYGWD	43,47	42,50	45,65	44,71	2,85	0,19	11242,91	11364,50	7,21	319,69	1333,00
Sygnia Itrix S&P 500 ETF	SYG500	63,10	62,28	66,58	65,05	3,09	0,30	2714,00	2797,87	1,53	98,26	776,00

MONTHLY DETAILED ETF INFORMATION

COMMODITIES

		Prices in Rands				In Rands		Values in Mn's		in 000's in Mn's		
INVEST ETF ISSUER (RF) LIMITED	CODE	START	LOW	HIGH	END	1M %	DISTRIBUTION	MCAP OPEN	MCAP CLOSE	VOL	VALUE	TRADES
1InvestGold ETF	ETFGLD	250,45	245,00	263,07	260,65	4,07	--	773,89	805,41	0,07	17,83	346,00
1InvestPalladium ETF	ETFPLD	390,00	365,36	406,13	374,41	-4,00	--	1191,08	900,10	0,44	172,75	291,00
1InvestPlatinum ETF	ETFPLT	152,36	147,93	163,40	149,15	-2,11	--	3937,74	2393,11	10,06	1,557.7	149,00
1InvestRhodium ETF	ETFRHO	2672,97	2350,00	2880,00	2701,43	1,06	--	457,89	546,78	0,03	67,25	533,00

FIRSTRAND BANK LIMITED	CODE	START	LOW	HIGH	END	1M %	DISTRIBUTION	MCAP OPEN	MCAP CLOSE	VOL	VALUE	TRADES
KR Custodial Certificate	KCCGLD	26293,50	26263,00	27495,00	27410,00	4,25	--	828,64	863,83	0,00	17,07	17,00

NEWGOLD ISSUER (RF) LIMITED	CODE	START	LOW	HIGH	END	1M %	DISTRIBUTION	MCAP OPEN	MCAP CLOSE	VOL	VALUE	TRADES
New Gold Issuer Ltd	GLD	239,84	238,04	253,87	249,80	4,15	--	16303,83	16930,93	1,87	458,06	2236,00
New Gold Platinum ETF	NGPLT	151,38	146,31	161,43	147,99	-2,24	--	8734,63	8553,82	3,28	509,64	902,00
NewGold Palladium ETF	NGPLD	391,37	365,29	407,00	373,91	-4,46	--	792,41	644,88	0,88	345,94	288,00

SA & GLOBAL FIXED INCOME

		Prices in Rands				In Rands		Values in Mn's		in 000's in Mn's		
STANLIB COLLECTIVE INVESTMEN' CODE	CODE	START	LOW	HIGH	END	1M %	DISTRIBUTION	MCAP OPEN	MCAP CLOSE	VOL	VALUE	TRADES
1Invest G7 Govt Bond ETF	ETFGGB	82,77	82,00	89,00	85,18	2,91	--	35,79	36,83	0,02	1,82	102,00
1Invest SA Bond ETF	ETFBND	82,96	79,00	83,82	83,71	0,90	1,77	49,78	50,23	0,09	7,53	360,00

ASHBURTON MANAGEMENT COMP CODE	CODE	START	LOW	HIGH	END	1M %	DISTRIBUTION	MCAP OPEN	MCAP CLOSE	VOL	VALUE	TRADES
Ashburton World GovB ETF	ASHWGB	7,34	7,20	7,80	7,56	3,00	--	125,77	129,54	0,21	1,54	122,00
Ashburton Inflation ETF	ASHINF	21,29	21,00	21,75	21,20	-0,42	0,17	394,61	392,94	0,43	9,08	111,00

FIRSTRAND BANK LIMITED	CODE	START	LOW	HIGH	END	1M %	DISTRIBUTION	MCAP OPEN	MCAP CLOSE	VOL	VALUE	TRADES
2YR Dollar Custodial Cert	DCCUS2	1453,50	1428,00	1505,00	1474,00	1,41	--	110,47	222,57	0,04	55,86	14,00
Dollar Custodial Cert	DCCUSD	1515,20	1499,30	1594,40	1555,30	2,65	--	204,55	209,97	0,04	56,42	16,00

NEWFUNDS COLLECTIVE INVESTM CODE	CODE	START	LOW	HIGH	END	1M %	DISTRIBUTION	MCAP OPEN	MCAP CLOSE	VOL	VALUE	TRADES
NEWFUNDS TRACI 3-M ETF	NFTRCI	28,16	27,00	28,30	28,21	0,18	0,24	234,20	234,61	0,57	16,13	119,00
NEWFUNDS GOVI ETF	NFGOVI	76,18	75,48	78,83	76,78	0,79	0,58	2660,14	2681,09	1,85	141,78	1263,00
NEWFUNDS ILBI ETF	NFILBI	75,51	73,80	76,76	75,59	0,11	0,20	105,71	105,83	0,13	9,68	153,00
NFNAM 10 Bonds	NFNAMB	16,21	16,08	16,43	16,34	0,80	0,39	308,19	310,66	0,13	2,12	24,00

Satrix Managers (RF) (Pty) Ltd	CODE	START	LOW	HIGH	END	1M %	DISTRIBUTION	MCAP OPEN	MCAP CLOSE	VOL	VALUE	TRADES
Satrix ILBI Portfolio	STXILB	6,47	6,31	6,60	6,47	0,00	0,17	252,43	271,84	0,78	5,08	108,00
Satrix Global Bond ETF	STXGBD	38,44	37,84	40,27	39,33	2,32	--	76,93	78,71	0,21	8,25	88,00
Satrix SA Bond Portfolio	STXGOV	8,29	8,01	8,35	8,28	-0,12	0,63	455,79	579,44	18,47	152,50	268,00

The information, data and compilations, or any part thereof, which make up the JSE ETF Factsheet ("Data") is being provided to you strictly for informational purposes. JSE Limited ("JSE") reserves the right to withdraw, modify, or replace the Data (or any part thereof) at any time.

To the extent allowed by law, JSE does not (expressly, tacitly or impliedly) guarantee or warrant the availability, sequence, accuracy, completeness, reliability or any other aspect of any of the Data or that the Data contained therein is up to date. To the extent allowed by law, neither the JSE nor any of its directors, officers, employees, contractors, agents or representatives are liable to any way to the reader/user or to any other natural or juristic person (Person) for any loss or damage as a result of any errors contained in the specification, for any loss arising from use of, or reliance on the Data in this JSE ETF Factsheet or any actions taken or not taken by or behalf of any Person in reliance on any Data in this JSE ETF Factsheet. You may not copy, reproduce, redistribute, alter or transmit any Data without the prior written consent of the JSE.

The Johannesburg Stock Exchange prides itself on a 130 year history as an effective, reputable trading platform. We are currently ranked the 19th largest stock exchange in the world based on market capitalization, and the largest exchange on the African continent. The JSE offers secure and efficient primary and secondary capital markets across a diverse range of asset classes which include equities, commodities, currencies, interest rates and bonds. We are the exchange of choice for local and international investors looking for investment opportunities across leading capital markets in South Africa and the broader African continent.

The JSE's achievements escalate through to this year's 20th anniversary of the first ETF listing on the local Exchange Traded Fund (ETF) market. Today, the ETF market capitalization is close to R90bn with over 70 listed ETFs on the JSE Main Board.

Our Primary Markets Team is a key access point for existing and/or potential issuers to gain exposure to local and international investor capital. The team focuses on listing companies and instruments on the Equity (Main Board and AltX) or Debt Market and aids in product development.

Contact the team: listingontheJSE@jse.co.za

Our Information Services Team works to deliver world class market data to our clients. This data can often be customized on request providing our clients with the exact Intel required to make business and portfolio decisions.

We offer live, delayed, end of day, reference and historical market data for:

- Equities
- Indices
- Equity Derivatives
- Commodity Derivatives
- Commodity Derivatives
- Currency Derivatives
- Interest Rate Derivatives
- Bonds
- Market Announcements (SENS)

We have nearly 170 indices across a wide variety of methodologies and investment criteria.

Our partnership with FTSE Russell includes:

- FTSE/JSE All Share
- FTSE/JSE Top 40
- FTSE/JSE ESG
- FTSE/JSE Factor Indices
- FTSE/JSE Shariah
- FTSE/JSE RAFI and many more

We develop customised indices to suit your needs.

- Our other service offerings include:
- Bond ETP data
- Tick data
- Corporate Actions
- Business Intelligence Reports
- Valuations

Contact the team: mdclients@jse.co.za