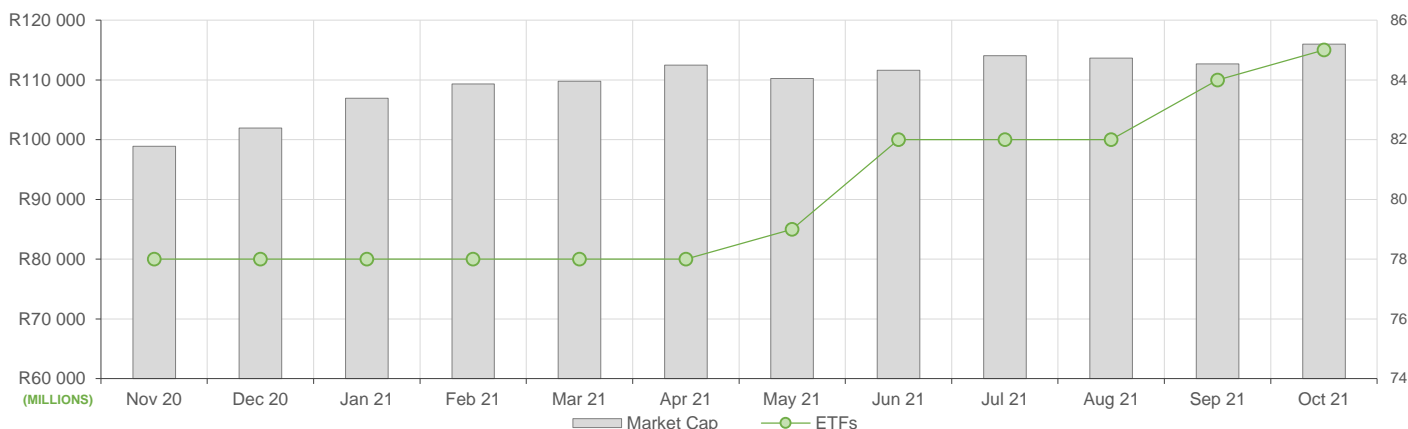


NEW LISTINGS AND DELISTINGS

| ETF | CODE | ISSUER | EVENT | DATE |
|-----|------|--------|-------|------|
|-----|------|--------|-------|------|

MARKET CAPITALISATION ANALYSIS | Total Industry



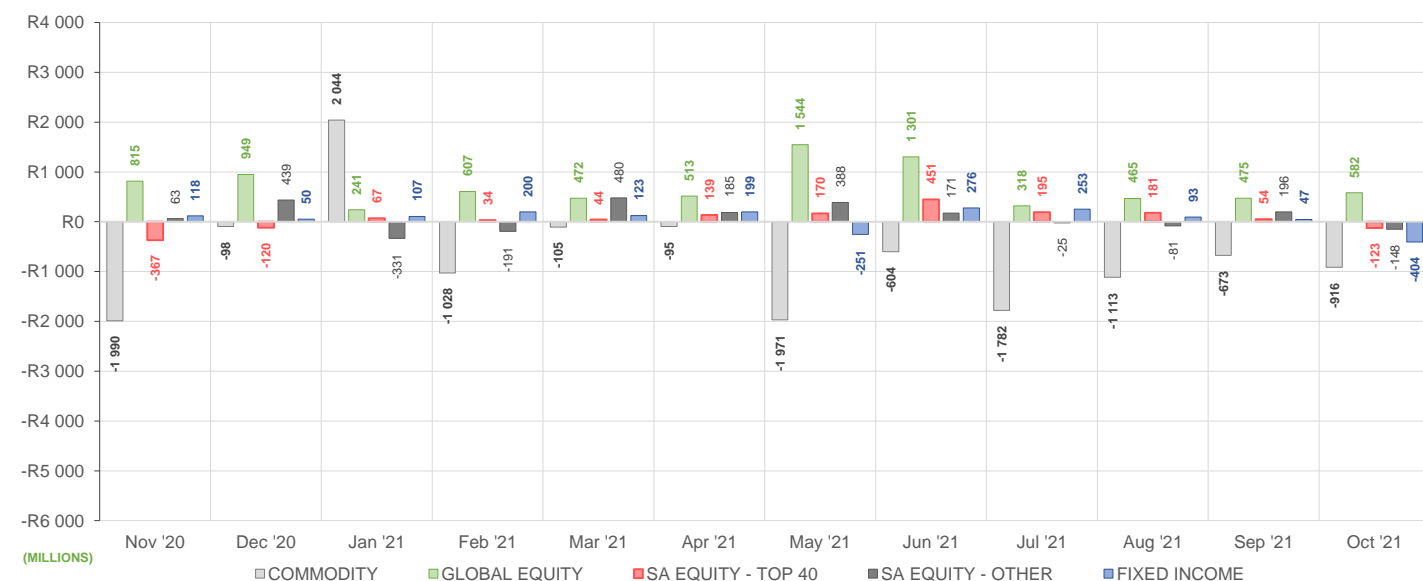
NET DAILY EXCHANGE CREATIONS AND REDEMPTIONS | Top & Bottom Five ETFs

| TOP 5 INSTRUMENTS | CODE | TOTAL DAILY CREATIONS | TOTAL DAILY REDEMPTIONS | NET MONTHLY CREATIONS |
|--------------------------|--------|-----------------------|-------------------------|-----------------------|
| Sygnia Itrix SP Glob ESG | SYGESG | R184 418 000 | --- | R184 418 000 |
| Sygnia Itrix MSCI EM 50 | SYGEMF | R138 160 000 | --- | R138 160 000 |
| Satrix SA Bond Portfolio | STXGOV | R90 145 000 | --- | R90 145 000 |
| Sygnia Itrix 4Ind Rev Gb | SYG4IR | R64 687 500 | --- | R64 687 500 |
| 1InvestGold ETF | ETFGLD | R192 978 750 | -R129 467 500 | R63 511 250 |

| BOTTOM 5 INSTRUMENTS | CODE | TOTAL DAILY CREATIONS | TOTAL DAILY REDEMPTIONS | NET MONTHLY CREATIONS |
|---------------------------|---------|-----------------------|-------------------------|-----------------------|
| Satrix 40 Portfolio | STX40 | R121 082 000 | -R277 334 000 | -R156 252 000 |
| 1Invest SA Property ETF | ETFSAPE | R967 200 | -R189 026 100 | -R188 058 900 |
| New Gold Issuer Ltd | GLD | R72 915 000 | -R345 653 000 | -R272 738 000 |
| 1InvestPlatinum ETF | ETFPLT | --- | -R412 483 000 | -R412 483 000 |
| Africa Sovereign Bond ETF | ASBI | --- | -R514 800 000 | -R514 800 000 |

Considers the daily update to total number of issued units listed on the exchange over the calendar month, with Creations representing a day-on-day increase in total number of listed units, and Redemptions representing a decrease. An average day-on-day price is used to estimate the ZAR value of each net daily movement. No secondary market transactions are considered.

NET MONTHLY EXCHANGE CREATIONS AND REDEMPTIONS



MONTHLY ETF PERFORMANCE | Top & Bottom Five ETFs

| TOP 5 INSTRUMENTS | CODE | TOTAL RETURN | VOLATILITY | MAX DRAW DOWN |
|--------------------------------------|--------|--------------|------------|---------------|
| CoreShares PrefTrax | PREFTX | 10,87% | 5,11% | -2,59% |
| Satrix RESI Portfolio | STXRES | 9,93% | 7,80% | -6,62% |
| 1invest Global REIT ETF | ETFGRE | 9,54% | 2,72% | -1,05% |
| Satrix Nasdaq 100 Prtf | STXNDQ | 9,54% | 4,39% | -2,19% |
| NewFunds Reitway Global Property ETF | NEWPRP | 9,54% | 3,73% | -1,36% |

| BOTTOM 5 INSTRUMENTS | CODE | TOTAL RETURN | VOLATILITY | MAX DRAW DOWN |
|---------------------------|--------|--------------|------------|---------------|
| 1invest SA Property ETF | ETFSAP | -1,18% | 4,26% | -2,93% |
| Satrix I & D ETF | STXID | -1,32% | 3,05% | -3,72% |
| Satrix FINI Portfolio | STXFIN | -3,25% | 2,43% | -4,90% |
| Africa Sovereign Bond ETF | ASBI | -4,57% | 4,52% | -4,57% |
| AMI Big50 ex-SA ETF | AMIB50 | -11,08% | 18,18% | -11,08% |

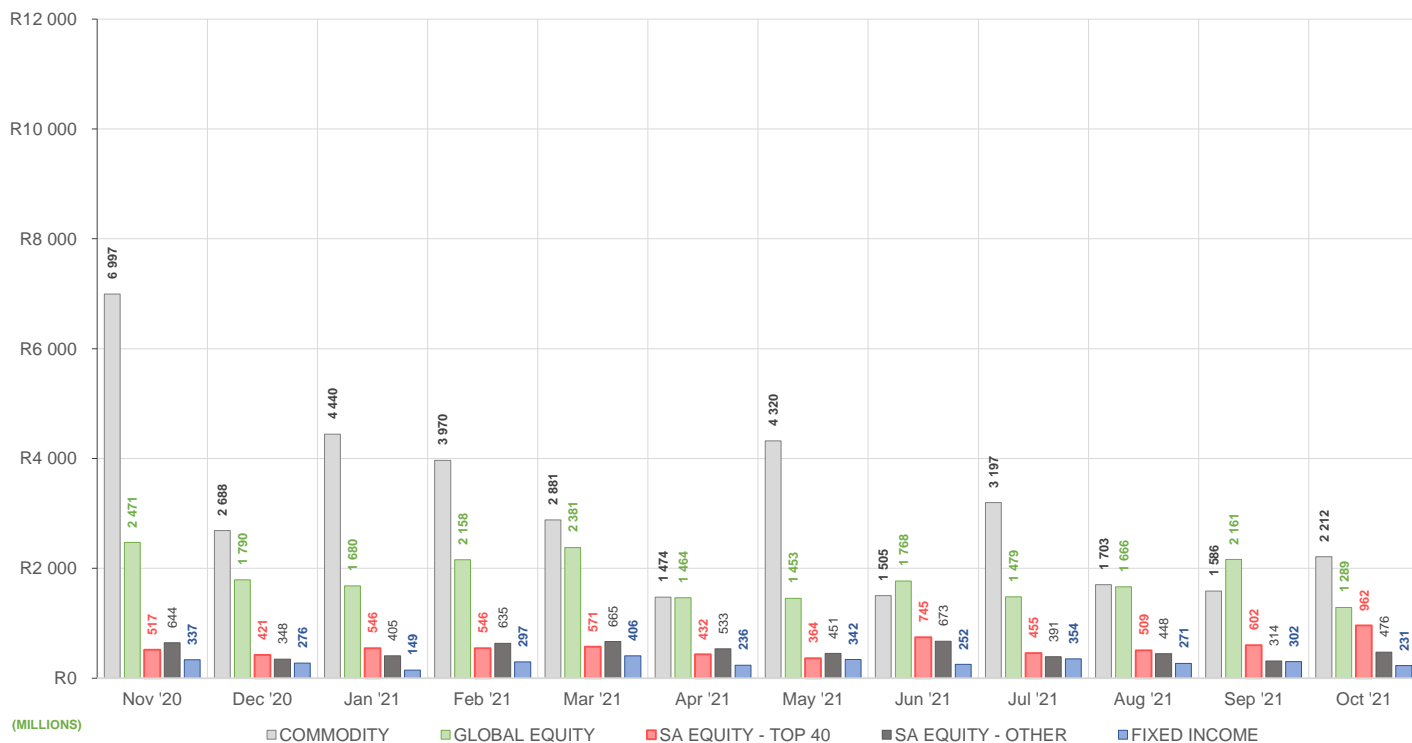
ROLLING 12-MONTH ETF PERFORMANCE | Top & Bottom Five ETFs

| TOP 5 INSTRUMENTS | CODE | TOTAL RETURN | VOLATILITY | MAX DRAW DOWN |
|---------------------------|--------|--------------|------------|---------------|
| CoreShares SAProp | CSPROP | 70,33% | 20,70% | -9,58% |
| Satrix Property Portfolio | STXPRO | 68,99% | 20,75% | -9,02% |
| NF Equity Value ETF | NFEVAL | 68,87% | 16,35% | -6,07% |
| 1invest SA Property ETF | ETFSAP | 65,75% | 24,45% | -10,12% |
| CoreShares PrefTrax | PREFTX | 58,33% | 12,96% | -9,89% |

| BOTTOM 5 INSTRUMENTS | CODE | TOTAL RETURN | VOLATILITY | MAX DRAW DOWN |
|-----------------------|--------|--------------|------------|---------------|
| 1investGold ETF | ETFGLD | -12,06% | 17,41% | -20,17% |
| Satrix MSCI China ETF | STXCHN | -17,03% | 26,21% | -31,96% |
| 1investPalladium ETF | ETFPLD | -17,89% | 45,72% | -35,35% |
| NewGold Palladium ETF | NGPLD | -17,99% | 32,51% | -35,15% |
| AMI Big50 ex-SA ETF | AMIB50 | -18,00% | 83,43% | -50,73% |

Total Return is the monthly/annual performance incorporating price performance and immediate reinvestment of dividends. Volatility is the based on daily price standard deviation and presented as a monthly/annual volatility. Maximum draw down measures the worst case return outcome for an investor over the course of the period – based on purchase and subsequent sale timing that results in the largest loss of capital.

MONTHLY VALUE TRADED FOR ALL ETFs



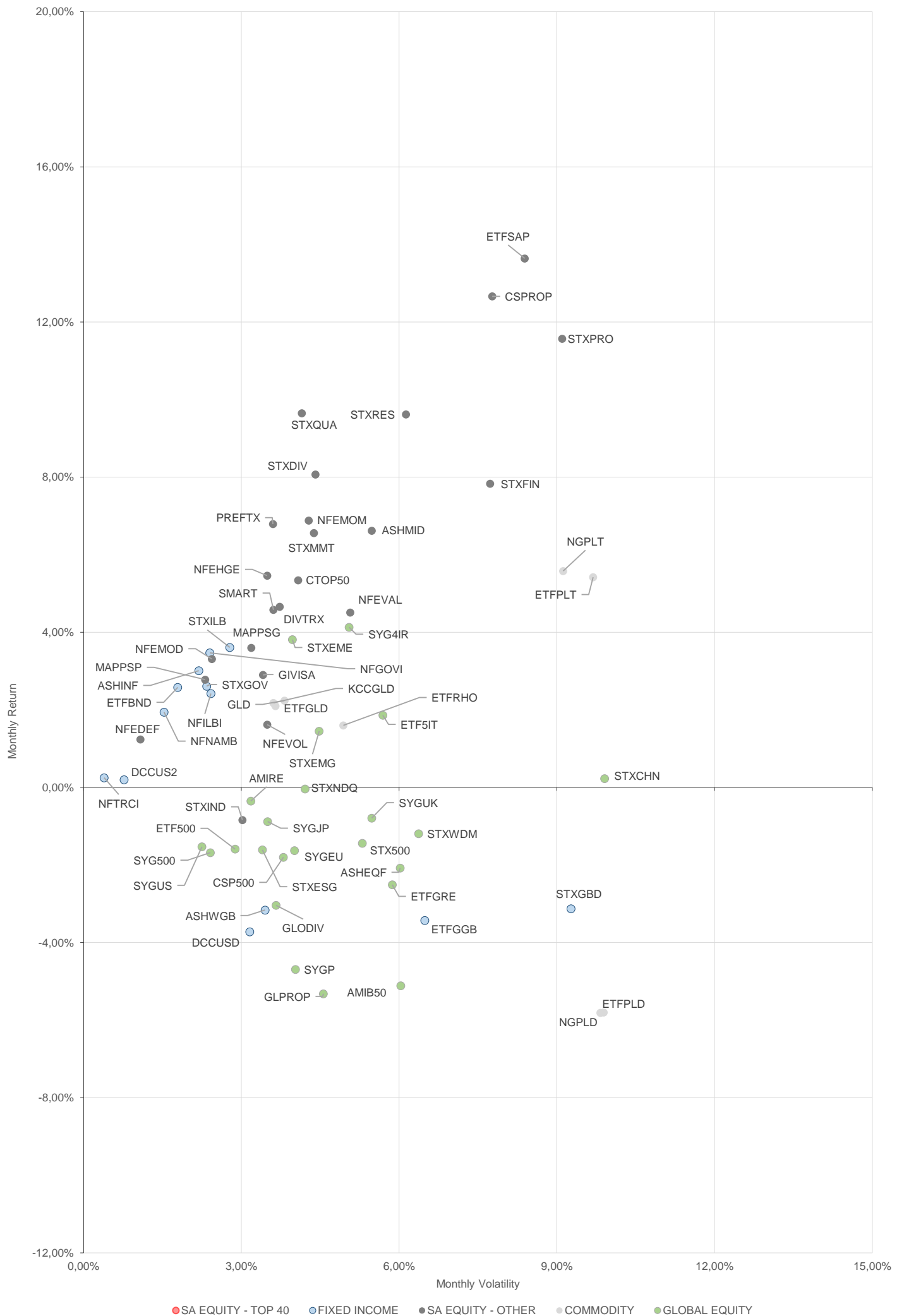
MONTHLY ETF TRADE STATISTICS | Top & Bottom Five Funds

| TOP 5 INSTRUMENTS | CODE | VOLUME | VALUE | TRADES | LIQUIDITY |
|----------------------------|--------|------------|-------------------|--------|-----------|
| New Gold Issuer Ltd | GLD | 4 683 909 | R1 164 180 071,00 | 3 262 | 7,07% |
| Satrix 40 Portfolio | STX40 | 12 761 120 | R771 149 232,90 | 2 550 | 7,32% |
| 1invest SA Property ETF | ETFSAP | 6 049 791 | R196 389 815,20 | 1 729 | 23,29% |
| 1invest SWIX 40 ETF | ETFSWX | 5 103 690 | R61 382 301,06 | 1 262 | 3,34% |
| Satrix DIVI Plus Portfolio | STXDIV | 16 320 654 | R46 581 992,10 | 1 134 | 2,52% |

| BOTTOM 5 INSTRUMENTS | CODE | VOLUME | VALUE | TRADES | LIQUIDITY |
|---------------------------|--------|--------|---------------|--------|-----------|
| 1INVEST S&P500 INDEX ETF | ETF500 | 9 256 | R3 121 814,40 | 189 | 3,37% |
| Dollar Custodial Cert | DCCUSD | 1 298 | R2 024 342,80 | 23 | 0,96% |
| 2YR Dollar Custodial Cert | DCCUS2 | 427 | R638 413,00 | 15 | 0,28% |
| KR Custodial Certificate | KCCGLD | 21 | R573 429,50 | 12 | 0,07% |
| 1invest G7 Govt Bond ETF | ETFGGB | 4 466 | R375 941,00 | 80 | 0,91% |

Volume, Value and Trades are the aggregate counts of all trade activity in the ETF for the month on the JSE equity market. This includes central order book and reported trades, but excludes creations and redemptions. Liquidity is the total volume traded expressed as a percentage of the number of listed instruments for the ETF as at the end of the month.

TOTAL RETURN VERSUS VOLATILITY



● SA EQUITY - TOP 40 ● FIXED INCOME ● SA EQUITY - OTHER ● COMMODITY ● GLOBAL EQUITY

MONTHLY DETAILED ETF INFORMATION

COMMODITIES

| | | Prices in Rands | | | | In Rands | | Values in Mn's | | in 000's in Mn's | | |
|--------------------------------|--------|-----------------|---------|---------|---------|----------|--------------|----------------|------------|--------------------|--------|--------|
| INVEST ETF ISSUER (RF) LIMITED | CODE | START | LOW | HIGH | END | 1M % | DISTRIBUTION | MCAP OPEN | MCAP CLOSE | VOL | VALUE | TRADES |
| 1InvestGold ETF | ETFGLD | 256,05 | 251,56 | 269,24 | 263,96 | 3,09 | -- | 407,12 | 485,69 | 0,80 | 201,85 | 264,00 |
| 1InvestPalladium ETF | ETFPLD | 275,96 | 272,21 | 313,58 | 289,04 | 4,74 | -- | 608,23 | 637,06 | 0,05 | 15,10 | 107,00 |
| 1InvestPlatinum ETF | ETFPLT | 141,57 | 138,85 | 154,96 | 150,39 | 6,23 | -- | 2162,48 | 1879,12 | 2,85 | 409,22 | 111,00 |
| 1InvestRhodium ETF | ETFRHO | 1902,12 | 1805,33 | 2079,99 | 1987,50 | 4,49 | -- | 385,00 | 349,61 | 0,03 | 63,18 | 289,00 |

| FIRSTRAND BANK LIMITED | CODE | START | LOW | HIGH | END | 1M % | DISTRIBUTION | MCAP OPEN | MCAP CLOSE | VOL | VALUE | TRADES |
|--------------------------|--------|----------|----------|----------|----------|------|--------------|-----------|------------|------|-------|--------|
| KR Custodial Certificate | KCCGLD | 26881,50 | 26691,99 | 27895,00 | 27718,50 | 3,11 | -- | 847,17 | 873,55 | 0,00 | 0,57 | 12,00 |

| NEWGOLD ISSUER (RF) LIMITED | CODE | START | LOW | HIGH | END | 1M % | DISTRIBUTION | MCAP OPEN | MCAP CLOSE | VOL | VALUE | TRADES |
|-----------------------------|-------|--------|--------|--------|--------|------|--------------|-----------|------------|------|----------|---------|
| New Gold Issuer Ltd | GLD | 245,05 | 239,92 | 257,58 | 252,79 | 3,16 | -- | 16510,96 | 16754,40 | 4,68 | 1,164,18 | 3262,00 |
| New Gold Platinum ETF | NGPLT | 140,45 | 138,09 | 151,74 | 149,33 | 6,32 | -- | 7050,59 | 7347,04 | 1,60 | 236,73 | 709,00 |
| NewGold Palladium ETF | NGPLD | 275,74 | 272,70 | 316,50 | 288,68 | 4,69 | -- | 365,27 | 353,55 | 0,34 | 102,07 | 536,00 |

SA & GLOBAL FIXED INCOME

| | | Prices in Rands | | | | In Rands | | Values in Mn's | | in 000's in Mn's | | |
|------------------------------------|--------|-----------------|-------|-------|-------|----------|--------------|----------------|------------|--------------------|-------|--------|
| STANLIB COLLECTIVE INVESTMEN' CODE | CODE | START | LOW | HIGH | END | 1M % | DISTRIBUTION | MCAP OPEN | MCAP CLOSE | VOL | VALUE | TRADES |
| 1Invest G7 Govt Bond ETF | ETFGGB | 85,50 | 82,00 | 90,00 | 84,26 | -1,45 | -- | 36,97 | 41,49 | 0,10 | 8,23 | 116,00 |
| 1Invest SA Bond ETF | ETFBND | 83,59 | 78,00 | 83,97 | 82,84 | -0,90 | 1,71 | 58,51 | 57,99 | 0,08 | 6,48 | 227,00 |

| ASHBURTON MANAGEMENT COMP CODE | CODE | START | LOW | HIGH | END | 1M % | DISTRIBUTION | MCAP OPEN | MCAP CLOSE | VOL | VALUE | TRADES |
|--------------------------------|--------|-------|-------|-------|-------|-------|--------------|-----------|------------|------|-------|--------|
| Ashburton World GovB ETF | ASHWGB | 7,50 | 7,18 | 7,70 | 7,63 | 1,73 | -- | 128,51 | 130,74 | 0,24 | 1,80 | 149,00 |
| Ashburton Inflation ETF | ASHINF | 21,65 | 21,40 | 21,98 | 21,63 | -0,09 | 0,14 | 401,28 | 400,91 | 0,69 | 14,85 | 123,00 |

| FIRSTRAND BANK LIMITED | CODE | START | LOW | HIGH | END | 1M % | DISTRIBUTION | MCAP OPEN | MCAP CLOSE | VOL | VALUE | TRADES |
|---------------------------|--------|---------|---------|---------|---------|------|--------------|-----------|------------|------|-------|--------|
| 2YR Dollar Custodial Cert | DCCUS2 | 1498,50 | 1460,00 | 1529,00 | 1530,00 | 2,10 | -- | 226,27 | 231,03 | 0,00 | 0,64 | 15,00 |
| Dollar Custodial Cert | DCCUSD | 1567,20 | 1514,00 | 1582,00 | 1582,00 | 0,94 | -- | 211,57 | 213,57 | 0,00 | 2,02 | 23,00 |

| NEWFUNDS COLLECTIVE INVESTM CODE | CODE | START | LOW | HIGH | END | 1M % | DISTRIBUTION | MCAP OPEN | MCAP CLOSE | VOL | VALUE | TRADES |
|----------------------------------|--------|-------|-------|-------|-------|-------|--------------|-----------|------------|------|--------|---------|
| NEWFUNDS TRACI 3-M ETF | NFTRCI | 28,38 | 28,29 | 28,56 | 28,46 | 0,28 | 0,28 | 236,03 | 236,69 | 0,13 | 3,72 | 142,00 |
| NEWFUNDS GOVI ETF | NFGOVI | 77,43 | 75,34 | 79,68 | 76,27 | -1,50 | 0,59 | 2936,08 | 2892,09 | 2,22 | 169,49 | 1325,00 |
| NEWFUNDS ILBI ETF | NFILBI | 77,32 | 75,00 | 78,13 | 77,49 | 0,22 | 0,19 | 108,25 | 108,49 | 0,05 | 3,69 | 74,00 |
| NFNAM 10 Bonds | NFNAMB | 16,32 | 16,07 | 16,41 | 16,09 | -1,41 | 0,39 | 310,28 | 326,82 | 1,30 | 21,34 | 23,00 |

| Satrix Managers (RF) (Pty) Ltd | CODE | START | LOW | HIGH | END | 1M % | DISTRIBUTION | MCAP OPEN | MCAP CLOSE | VOL | VALUE | TRADES |
|--------------------------------|--------|-------|-------|-------|-------|-------|--------------|-----------|------------|-------|--------|---------|
| Satrix ILBI Portfolio | STXILB | 6,57 | 6,55 | 6,75 | 6,61 | 0,61 | -- | 276,04 | 277,72 | 2,17 | 14,52 | 155,00 |
| Satrix Global Bond ETF | STXGBD | 39,44 | 37,55 | 40,30 | 39,85 | 1,04 | 0,31 | 59,21 | 59,82 | 0,08 | 3,17 | 81,00 |
| Satrix SA Bond Portfolio | STXGOV | 8,30 | 8,07 | 8,37 | 8,25 | -0,60 | -- | 497,84 | 585,59 | 14,22 | 116,89 | 1284,00 |

The information, data and compilations, or any part thereof, which make up the JSE ETF Factsheet ("Data") is being provided to you strictly for informational purposes. JSE Limited ("JSE") reserves the right to withdraw, modify, or replace the Data (or any part thereof) at any time.

To the extent allowed by law, JSE does not (expressly, tacitly or impliedly) guarantee or warrant the availability, sequence, accuracy, completeness, reliability or any other aspect of any of the Data or that the Data contained therein is up to date. To the extent allowed by law, neither the JSE nor any of its directors, officers, employees, contractors, agents or representatives are liable to any way to the reader/user or to any other natural or juristic person (Person) for any loss or damage as a result of any errors contained in the specification, for any loss arising from use of, or reliance on the Data in this JSE ETF Factsheet or any actions taken or not taken by or behalf of any Person in reliance on any Data in this JSE ETF Factsheet. You may not copy, reproduce, redistribute, alter or transmit any Data without the prior written consent of the JSE.

The Johannesburg Stock Exchange prides itself on a 130 year history as an effective, reputable trading platform. We are currently ranked the 19th largest stock exchange in the world based on market capitalization, and the largest exchange on the African continent. The JSE offers secure and efficient primary and secondary capital markets across a diverse range of asset classes which include equities, commodities, currencies, interest rates and bonds. We are the exchange of choice for local and international investors looking for investment opportunities across leading capital markets in South Africa and the broader African continent.

The JSE's achievements escalate through to this year's 20th anniversary of the first ETF listing on the local Exchange Traded Fund (ETF) market. Today, the ETF market capitalization is close to R90bn with over 70 listed ETFs on the JSE Main Board.

Our Primary Markets Team is a key access point for existing and/or potential issuers to gain exposure to local and international investor capital. The team focuses on listing companies and instruments on the Equity (Main Board and AltX) or Debt Market and aids in product development.

Contact the team: listingontheJSE@jse.co.za

Our Information Services Team works to deliver world class market data to our clients. This data can often be customized on request providing our clients with the exact Intel required to make business and portfolio decisions.

We offer live, delayed, end of day, reference and historical market data for:

- Equities
- Indices
- Equity Derivatives
- Commodity Derivatives
- Commodity Derivatives
- Currency Derivatives
- Interest Rate Derivatives
- Bonds
- Market Announcements (SENS)

We have nearly 170 indices across a wide variety of methodologies and investment criteria.

Our partnership with FTSE Russell includes:

- FTSE/JSE All Share
- FTSE/JSE Top 40
- FTSE/JSE ESG
- FTSE/JSE Factor Indices
- FTSE/JSE Shariah
- FTSE/JSE RAFI and many more

We develop customised indices to suit your needs.

- Our other service offerings include:
- Bond ETP data
- Tick data
- Corporate Actions
- Business Intelligence Reports
- Valuations

Contact the team: mdclients@jse.co.za