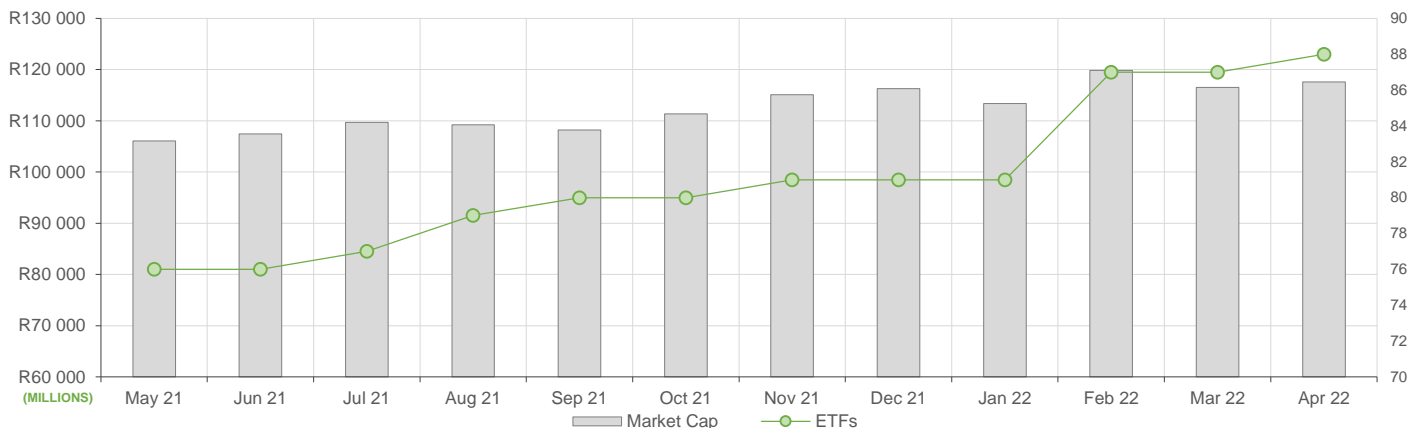


NEW LISTINGS AND DELISTINGS

ETF	CODE	ISSUER	EVENT	DATE
Sygnia ITRIX New China Sectors	SYGCN	Sygnia ITRIX (RF) Proprietary Ltd	Listing	--

MARKET CAPITALISATION ANALYSIS | Total Industry



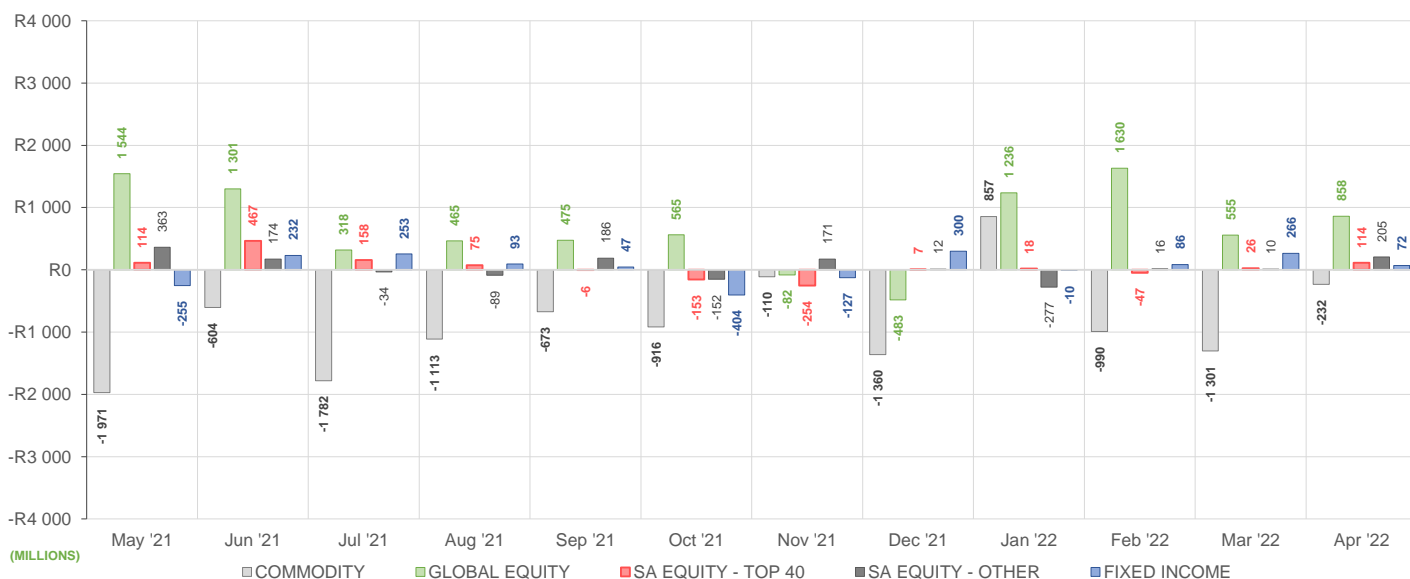
NET DAILY EXCHANGE CREATIONS AND REDEMPTIONS | Top & Bottom Five ETFs

TOP 5 INSTRUMENTS	CODE	TOTAL DAILY CREATIONS	TOTAL DAILY REDEMPTIONS	NET MONTHLY CREATIONS
Sygnia Itrix MSCI World	SYGWD	R190 690 326	-R44 639 314	R146 051 012
1invest SA Property ETF	ETFSAP	R130 945 200	---	R130 945 200
1investPalladium ETF	ETPLD	R97 079 500	---	R97 079 500
NEWFUNDS GOVI ETF	NFGOVI	R78 445 000	---	R78 445 000
Satrix MSCI World Feeder	STXWDM	R92 730 500	-R24 222 000	R68 508 500

BOTTOM 5 INSTRUMENTS	CODE	TOTAL DAILY CREATIONS	TOTAL DAILY REDEMPTIONS	NET MONTHLY CREATIONS
Satrix RAFI 40 Portfolio	STXRAF	---	-R8 847 000	-R8 847 000
Satrix INDI Portfolio	STXIND	R12 137 250	-R31 200 000	-R19 062 750
Satrix S&P 500 Feeder	STX500	---	-R93 478 000	-R93 478 000
NewGold Palladium ETF	NGPLD	---	-R126 182 000	-R126 182 000
New Gold Issuer Ltd	GLD	R53 645 500	-R334 806 000	-R281 160 500

Considers the daily update to total number of issued units listed on the exchange over the calendar month, with Creations representing a day-on-day increase in total number of listed units, and Redemptions representing a decrease. An average day-on-day price is used to estimate the ZAR value of each net daily movement. No secondary market transactions are considered.

NET MONTHLY EXCHANGE CREATIONS AND REDEMPTIONS



MONTHLY ETF PERFORMANCE | Top & Bottom Five ETFs

TOP 5 INSTRUMENTS	CODE	TOTAL RETURN	VOLATILITY	MAX DRAW DOWN
1Invest SA Bond ETF	ETFBND	10,05%	6,72%	-2,56%
NewGold Palladium ETF	NGPLD	8,67%	16,03%	-10,08%
2YR Dollar Custodial Cert	DCCUS2	7,51%	4,26%	-2,08%
1InvestPalladium ETF	ETFPD	7,35%	15,79%	-10,31%
1InvestGold ETF	ETFGD	6,94%	2,93%	-1,12%

BOTTOM 5 INSTRUMENTS	CODE	TOTAL RETURN	VOLATILITY	MAX DRAW DOWN
Satrix RESI Portfolio	STXRES	-5,74%	9,23%	-13,58%
CoreShares DivTrax	DIVTRX	-6,12%	6,77%	-13,22%
Satrix FINI Portfolio	STXFIN	-6,52%	4,42%	-7,84%
Satrix Quality SA Port	STXQUA	-7,28%	5,65%	-11,96%
AMI Big50 ex-SA ETF	AMIB50	-10,19%	22,37%	-14,70%

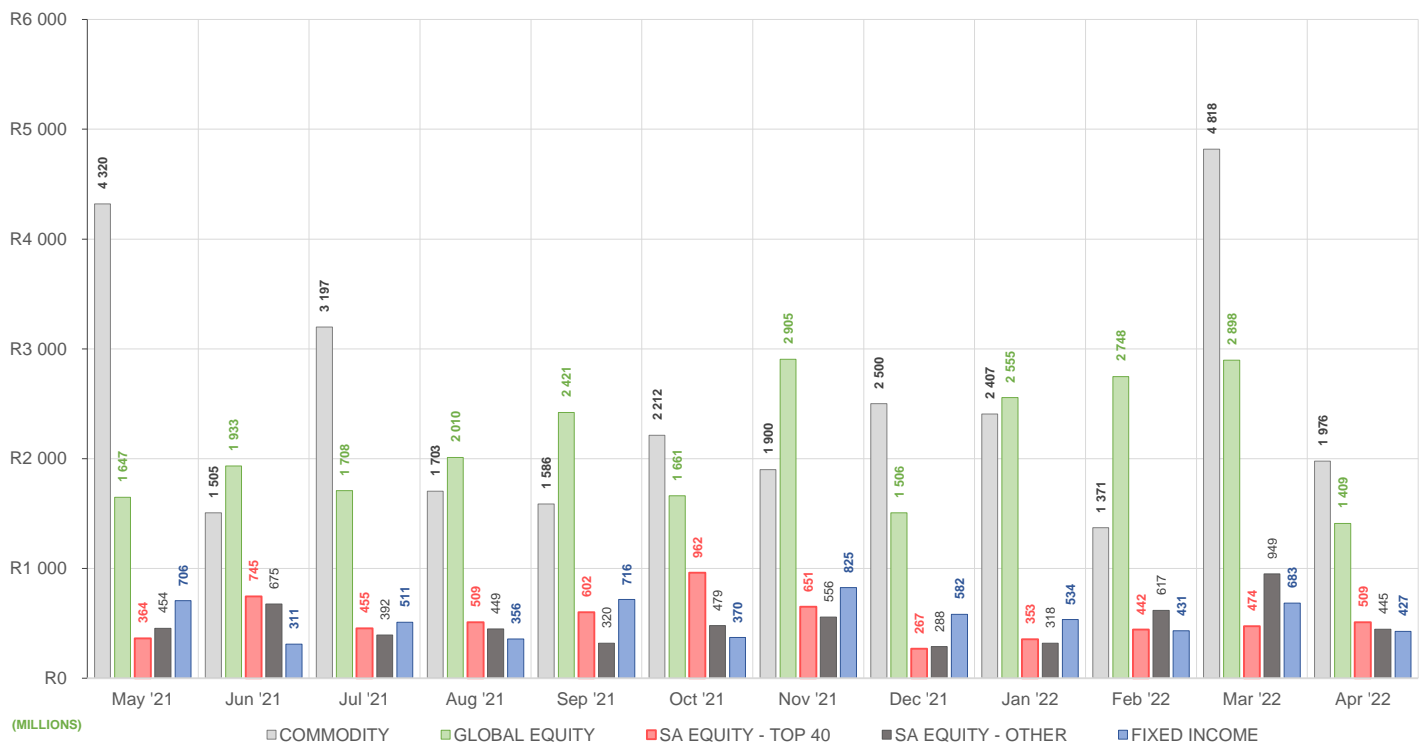
ROLLING 12-MONTH ETF PERFORMANCE | Top & Bottom Five ETFs

TOP 5 INSTRUMENTS	CODE	TOTAL RETURN	VOLATILITY	MAX DRAW DOWN
CoreShares PrefTrax	PREFTX	41,09%	19,65%	-11,13%
Satrix FINI Portfolio	STXFIN	36,75%	20,43%	-11,10%
Satrix DIVI Plus Portfolio	STXDIV	35,81%	18,21%	-9,86%
Satrix RAFI 40 Portfolio	STXRAF	33,72%	17,60%	-7,51%
NF Equity Value ETF	NFEVAL	33,39%	15,26%	-6,24%

BOTTOM 5 INSTRUMENTS	CODE	TOTAL RETURN	VOLATILITY	MAX DRAW DOWN
1InvestPalladium ETF	ETFPD	-16,87%	59,13%	-42,39%
Sygnia Itrix MSCI EM 50	SYGEMF	-18,50%	22,31%	-32,27%
Sygnia Itrix 4Ird Rev Gb	SYG4IR	-24,47%	24,51%	-31,49%
Satrix MSCI China ETF	STXCHN	-31,02%	30,90%	-42,77%
1InvestRhodium ETF	ETFRHO	-33,66%	64,73%	-62,20%

Total Return is the monthly/annual performance incorporating price performance and immediate reinvestment of dividends. Volatility is the based on daily price standard deviation and presented as a monthly/annual volatility. Maximum draw down measures the worst case return outcome for an investor over the course of the period – based on purchase and subsequent sale timing that results in the largest loss of capital.

MONTHLY VALUE TRADED FOR ALL ETFs



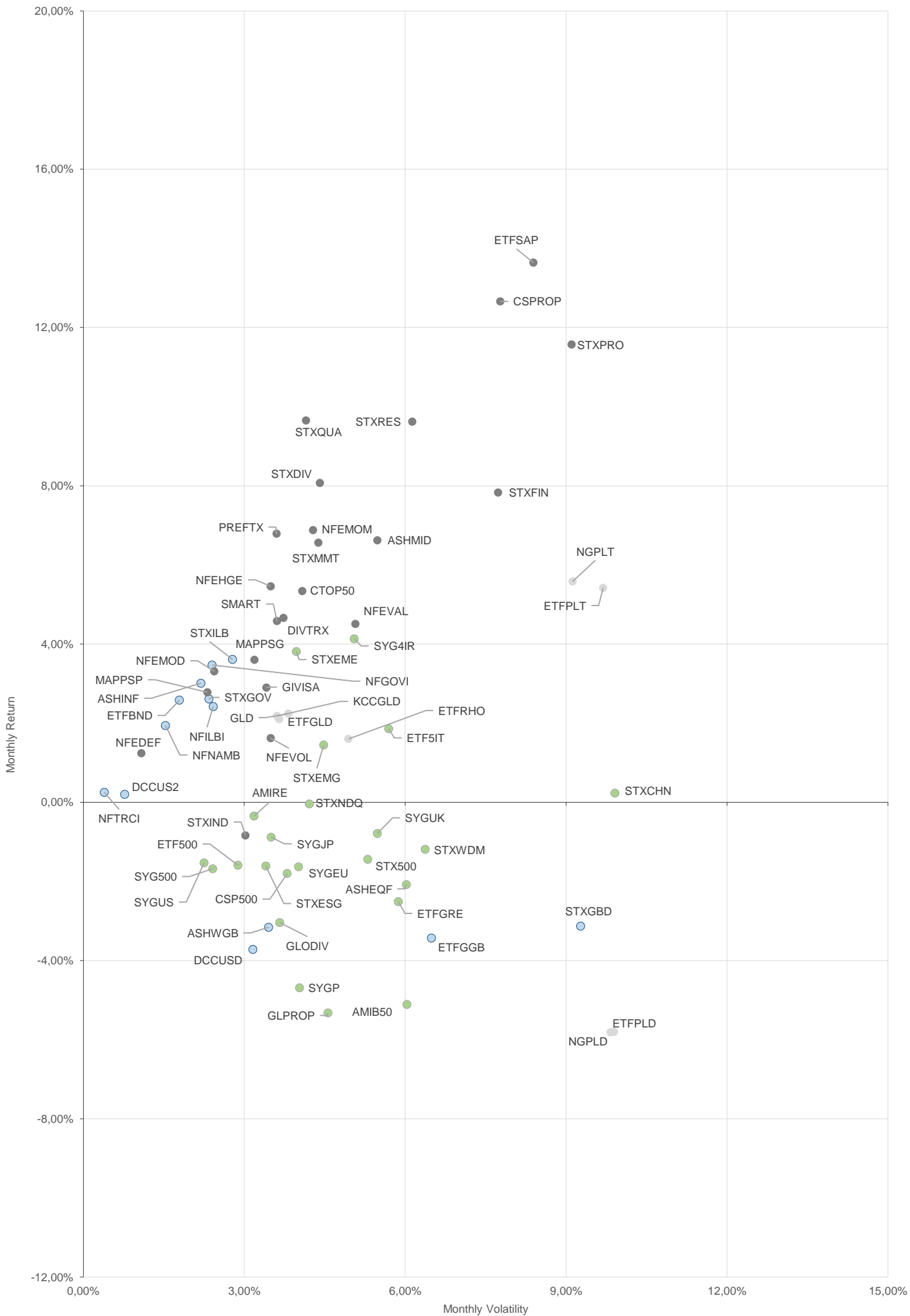
MONTHLY ETF TRADE STATISTICS | Top & Bottom Five Funds

TOP 5 INSTRUMENTS	CODE	VOLUME	VALUE	TRADES	LIQUIDITY
New Gold Issuer Ltd	GLD	4 989 681	R1 360 921 275,00	4 152	8,28%
Satrix MSCI World Feeder	STXWDM	4 388 794	R270 930 761,00	1 424	4,40%
1Invest SA Property ETF	ETFSP	4 268 127	R142 437 163,60	551	21,15%
1Invest SWIX 40 ETF	ETFSWX	4 103 355	R53 753 939,57	57	3,07%
Satrix DIVI Plus Portfolio	STXDIV	12 466 103	R42 897 124,79	1 086	1,86%

BOTTOM 5 INSTRUMENTS	CODE	VOLUME	VALUE	TRADES	LIQUIDITY
1InvestRhodium ETF	ETFRHO	4 946	R12 936 558,89	232	2,65%
KR Custodial Certificate	KCCGLD	30	R919 344,00	14	0,10%
NewFunds S&P GIVI SA T50	GIVISA	7 082	R297 526,74	38	0,34%
2YR Dollar Custodial Cert	DCCUS2	74	R111 898,90	7	0,05%
AMI Big50 ex-SA ETF	AMIB50	11 257	R86 650,26	86	1,46%

Volume, Value and Trades are the aggregate counts of all trade activity in the ETF for the month on the JSE equity market. This includes central order book and reported trades, but excludes creations and redemptions. Liquidity is the total volume traded expressed as a percentage of the number of listed instruments for the ETF as at the end of the month.

TOTAL RETURN VERSUS VOLATILITY



MONTHLY DETAILED ETF INFORMATION

COMMODITIES

		Prices in Rands				In Rands		Values in Mn's		in 000's in Mn's		
INVEST ETF ISSUER (RF) LIMITED	CODE	START	LOW	HIGH	END	1M %	DISTRIBUTION	MCAP OPEN	MCAP CLOSE	VOL	VALUE	TRADES
1InvestGold ETF	ETFGLD	275,93	273,99	304,50	295,09	6,94	--	535,30	631,49	0,28	77,70	187,00
1InvestPalladium ETF	ETFPLD	324,81	312,95	367,70	348,68	7,35	--	199,45	318,71	0,30	98,69	204,00
1InvestPlatinum ETF	ETFPLT	142,26	135,15	146,75	145,02	1,94	--	1901,30	1938,19	0,48	68,30	99,00
1InvestRhodium ETF	ETFRHO	2684,26	2475,40	2850,00	2600,75	-3,11	--	501,70	486,09	0,00	12,86	227,00

FIRSTRAND BANK LIMITED	CODE	START	LOW	HIGH	END	1M %	DISTRIBUTION	MCAP OPEN	MCAP CLOSE	VOL	VALUE	TRADES
KR Custodial Certificate	KCCGLD	28996,50	28977,00	31264,00	31000,00	6,91	--	913,82	976,97	0,00	0,92	14,00

NEWGOLD ISSUER (RF) LIMITED	CODE	START	LOW	HIGH	END	1M %	DISTRIBUTION	MCAP OPEN	MCAP CLOSE	VOL	VALUE	TRADES
New Gold Issuer Ltd	GLD	264,46	260,10	285,43	282,33	6,76	--	16205,56	17018,27	4,99	1,360,92	4152,00
New Gold Platinum ETF	NGPLT	141,47	134,57	146,04	143,74	1,60	--	5871,01	5965,21	0,92	127,67	265,00
NewGold Palladium ETF	NGPLD	324,84	310,92	372,04	353,01	8,67	--	495,28	397,03	0,56	181,23	184,00

SA & GLOBAL FIXED INCOME

		Prices in Rands				In Rands		Values in Mn's		in 000's in Mn's		
STANLIB COLLECTIVE INVESTMEN' CODE	CODE	START	LOW	HIGH	END	1M %	DISTRIBUTION	MCAP OPEN	MCAP CLOSE	VOL	VALUE	TRADES
1Invest G7 Govt Bond ETF	ETFGGB	76,25	73,51	79,47	78,21	2,57	0,14	38,77	39,76	0,02	1,74	91,00
1Invest SA Bond ETF	ETFBND	80,00	84,80	88,24	85,94	7,42	2,05	72,00	77,35	0,04	3,77	78,00

FNB CIS MANCO (RF) (PROPRIETAR CODE	START	LOW	HIGH	END	1M %	DISTRIBUTION	MCAP OPEN	MCAP CLOSE	VOL	VALUE	TRADES	
FNB WORLD GOVBOND ETF	FNBWGB	6,66	6,33	6,98	6,81	2,25	--	120,78	123,50	0,26	1,75	147,00
FNB GOV INF LNKD BND ETF	FNBINF	22,69	22,48	23,22	22,93	1,06	0,15	420,56	425,01	0,17	3,82	134,00

FIRSTRAND BANK LIMITED	CODE	START	LOW	HIGH	END	1M %	DISTRIBUTION	MCAP OPEN	MCAP CLOSE	VOL	VALUE	TRADES
2YR Dollar Custodial Cert	DCCUS2	1425,05	1412,30	1541,50	1532,05	7,51	--	215,18	231,34	0,00	0,11	7,00
Dollar Custodial Cert	DCCUSD	1430,80	1404,00	1541,90	1524,00	6,51	--	193,16	205,74	0,01	18,69	47,00

NEWFUNDS COLLECTIVE INVESTM CODE	START	LOW	HIGH	END	1M %	DISTRIBUTION	MCAP OPEN	MCAP CLOSE	VOL	VALUE	TRADES	
NEWFUNDS TRACI 3-M ETF	NFTRCI	28,92	28,84	29,15	28,99	0,24	0,29	240,52	241,10	0,13	3,65	145,00
NEWFUNDS GOVI ETF	NFGOVI	79,92	77,35	84,00	77,68	-2,80	1,20	3310,22	3295,12	1,93	153,49	1447,00
NEWFUNDS ILBI ETF	NFILBI	80,98	80,65	83,86	82,64	2,05	0,21	113,37	115,70	0,02	1,76	63,00
NFNAM 10 Bonds	NFNAMB	16,50	16,30	17,29	16,36	-0,85	0,38	337,13	334,27	0,01	0,17	21,00

Satrix Managers (RF) (Pty) Ltd	CODE	START	LOW	HIGH	END	1M %	DISTRIBUTION	MCAP OPEN	MCAP CLOSE	VOL	VALUE	TRADES
Satrix ILBI Portfolio	STXILB	6,94	6,93	7,30	7,19	3,60	--	388,75	402,75	1,90	13,58	164,00
Satrix Global Bond ETF	STXGBD	35,44	33,87	37,49	36,45	2,85	0,17	39,03	40,14	0,14	4,84	99,00
Satrix SA Bond Portfolio	STXGOV	8,66	8,46	8,86	8,54	-1,39	--	761,91	742,82	23,57	201,73	603,00

The information, data and compilations, or any part thereof, which make up the JSE ETF Factsheet ("Data") is being provided to you strictly for informational purposes. JSE Limited ("JSE") reserves the right to withdraw, modify, or replace the Data (or any part thereof) at any time.

To the extent allowed by law, JSE does not (expressly, tacitly or impliedly) guarantee or warrant the availability, sequence, accuracy, completeness, reliability or any other aspect of any of the Data or that the Data contained therein is up to date. To the extent allowed by law, neither the JSE nor any of its directors, officers, employees, contractors, agents or representatives are liable to any way to the reader/user or to any other natural or juristic person (Person) for any loss or damage as a result of any errors contained in the specification, for any loss arising from use of, or reliance on the Data in this JSE ETF Factsheet or any actions taken or not taken by or behalf of any Person in reliance on any Data in this JSE ETF Factsheet. You may not copy, reproduce, redistribute, alter or transmit any Data without the prior written consent of the JSE.

The Johannesburg Stock Exchange prides itself on a 130 year history as an effective, reputable trading platform. We are currently ranked the 19th largest stock exchange in the world based on market capitalization, and the largest exchange on the African continent. The JSE offers secure and efficient primary and secondary capital markets across a diverse range of asset classes which include equities, commodities, currencies, interest rates and bonds. We are the exchange of choice for local and international investors looking for investment opportunities across leading capital markets in South Africa and the broader African continent.

The JSE's achievements escalate through to this year's 20th anniversary of the first ETF listing on the local Exchange Traded Fund (ETF) market. Today, the ETF market capitalization is close to R90bn with over 70 listed ETFs on the JSE Main Board.

Our Primary Markets Team is a key access point for existing and/or potential issuers to gain exposure to local and international investor capital. The team focuses on listing companies and instruments on the Equity (Main Board and AltX) or Debt Market and aids in product development.

Contact the team: listingontheJSE@jse.co.za

Our Information Services Team works to deliver world class market data to our clients. This data can often be customized on request providing our clients with the exact Intel required to make business and portfolio decisions.

We offer live, delayed, end of day, reference and historical market data for:

- Equities
- Indices
- Equity Derivatives
- Commodity Derivatives
- Commodity Derivatives
- Currency Derivatives
- Interest Rate Derivatives
- Bonds
- Market Announcements (SENS)

We have nearly 170 indices across a wide variety of methodologies and investment criteria.

Our partnership with FTSE Russell includes:

- FTSE/JSE All Share
- FTSE/JSE Top 40
- FTSE/JSE ESG
- FTSE/JSE Factor Indices
- FTSE/JSE Shariah
- FTSE/JSE RAFI and many more

We develop customised indices to suit your needs.

- Our other service offerings include:
- Bond ETP data
- Tick data
- Corporate Actions
- Business Intelligence Reports
- Valuations

Contact the team: mdclients@jse.co.za