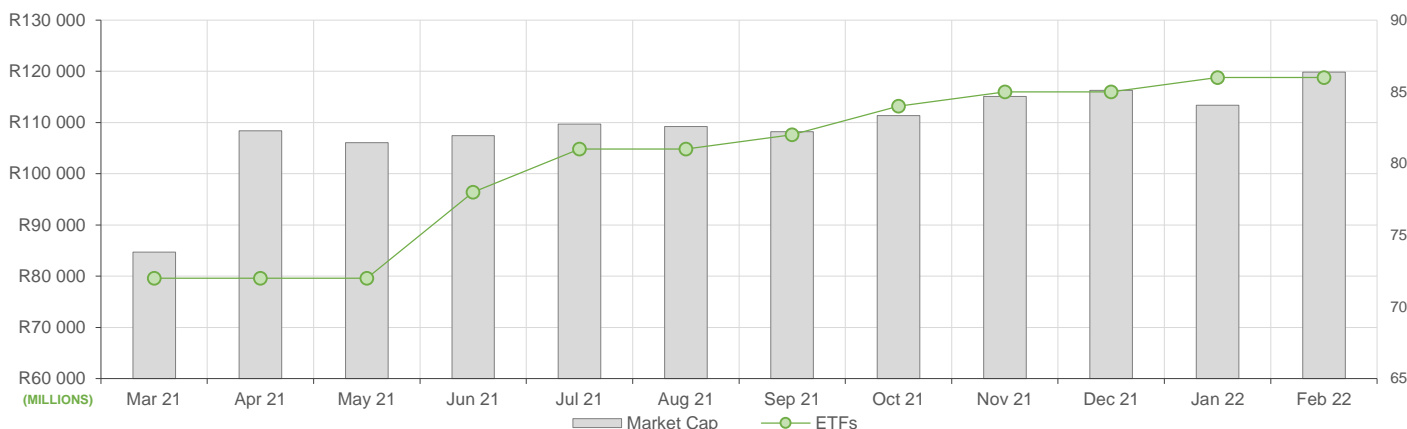


NEW LISTINGS AND DELISTINGS

ETF	CODE	ISSUER	EVENT	DATE
Satrix MSCI India ETF	STXNDA	Satrix Managers (RF) (Pty) Ltd	Listing	--

MARKET CAPITALISATION ANALYSIS | Total Industry



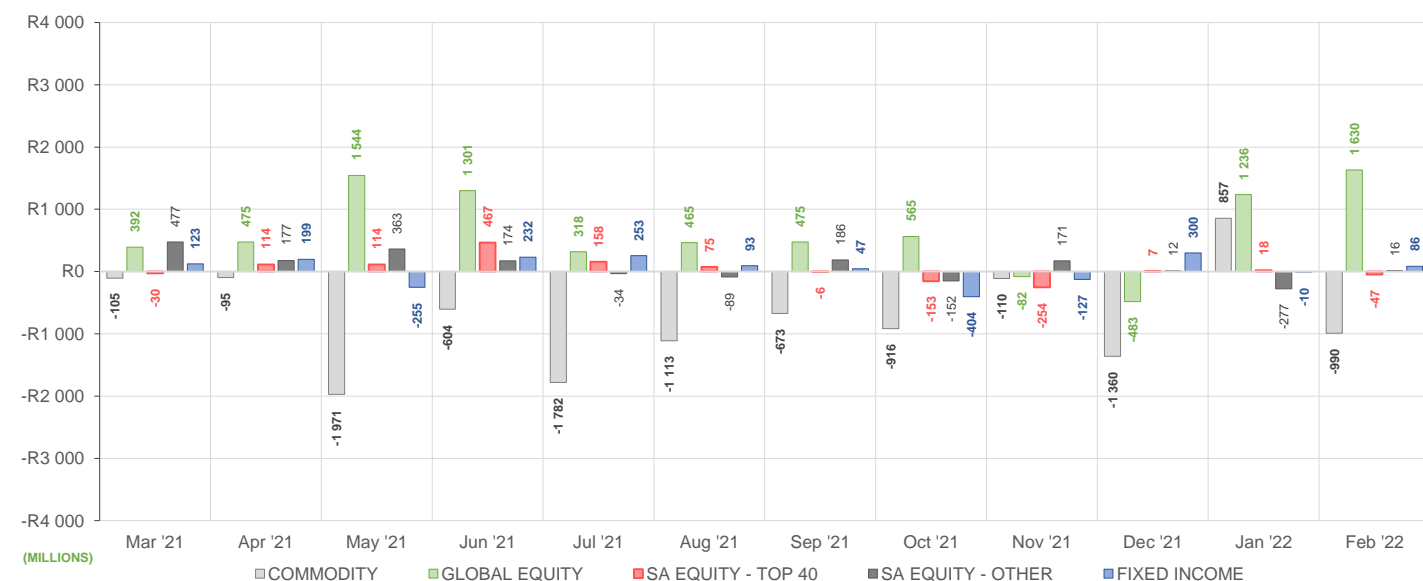
NET DAILY EXCHANGE CREATIONS AND REDEMPTIONS | Top & Bottom Five ETFs

TOP 5 INSTRUMENTS	CODE	TOTAL DAILY CREATIONS	TOTAL DAILY REDEMPTIONS	NET MONTHLY CREATIONS
Sygnia Itrix MSCI World	SYGWD	R463 629 498	---	R463 629 498
Satrix S&P 500 Feeder	STX500	R269 116 500	---	R269 116 500
Satrix MSCI World Feeder	STXWDM	R207 163 500	---	R207 163 500
Satrix Capped ALL Share	STXCAP	R141 316 500	---	R141 316 500
Sygnia Itrix S&P 500 ETF	SYG500	R137 320 000	---	R137 320 000

BOTTOM 5 INSTRUMENTS	CODE	TOTAL DAILY CREATIONS	TOTAL DAILY REDEMPTIONS	NET MONTHLY CREATIONS
1invest SA Property ETF	ETFSAAP	R3 292 500	-R77 947 450	-R74 654 950
New Gold Platinum ETF	NGPLT	---	-R76 350 000	-R76 350 000
New Gold Issuer Ltd	GLD	---	-R107 080 000	-R107 080 000
1invest TOP 40 ETF	ETF40	---	-R110 253 800	-R110 253 800
1investPlatinum ETF	ETFPLT	---	-R806 356 500	-R806 356 500

Considers the daily update to total number of issued units listed on the exchange over the calendar month, with Creations representing a day-on-day increase in total number of listed units, and Redemptions representing a decrease. An average day-on-day price is used to estimate the ZAR value of each net daily movement. No secondary market transactions are considered.

NET MONTHLY EXCHANGE CREATIONS AND REDEMPTIONS



MONTHLY ETF PERFORMANCE | Top & Bottom Five ETFs

TOP 5 INSTRUMENTS	CODE	TOTAL RETURN	VOLATILITY	MAX DRAW DOWN
1investRhodium ETF	ETFRHO	20,74%	12,99%	-5,02%
Satrix RESI Portfolio	STXRES	15,70%	7,07%	-2,17%
Satrix DIVI Plus Portfolio	STXDIV	11,29%	3,74%	-0,89%
NEWFUNDS SHARIA TOP40	NFSH40	10,96%	5,43%	-2,13%
CoreShares DivTrax	DIVTRX	9,52%	5,51%	-1,91%

BOTTOM 5 INSTRUMENTS	CODE	TOTAL RETURN	VOLATILITY	MAX DRAW DOWN
AMI Big50 ex-SA ETF	AMIB50	-8,97%	28,58%	-20,45%
Sygnia Itrix Eurostoxx50	SYGEU	-9,01%	8,10%	-11,09%
Satrix INDI Portfolio	STXIND	-9,34%	6,01%	-10,62%
Sygnia Itrix MSCI EM 50	SYGEMF	-9,50%	6,36%	-11,66%
Africa Sovereign Bond ETF	ASBI	-44,54%	56,85%	-44,54%

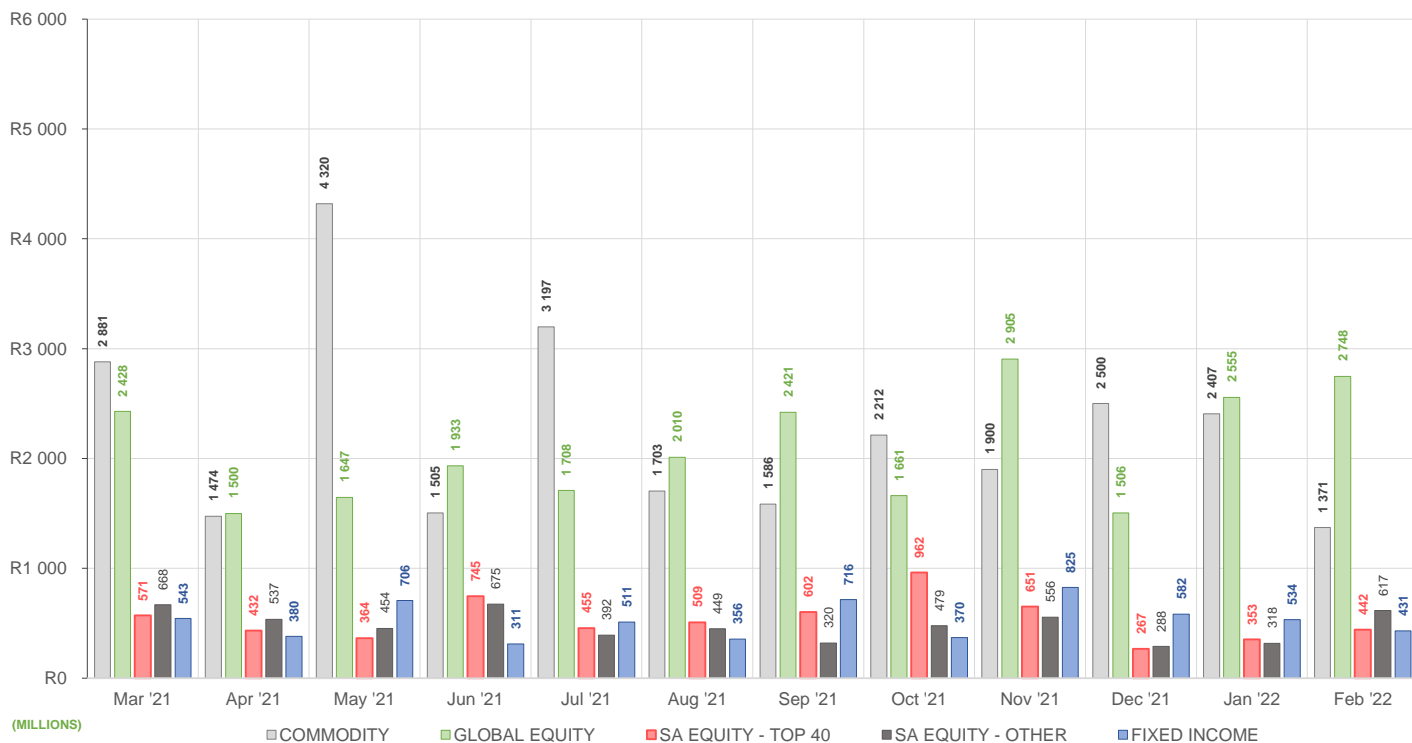
ROLLING 12-MONTH ETF PERFORMANCE | Top & Bottom Five ETFs

TOP 5 INSTRUMENTS	CODE	TOTAL RETURN	VOLATILITY	MAX DRAW DOWN
CoreShares PrefTrax	PREFTX	49,07%	14,78%	-9,89%
Satrix DIVI Plus Portfolio	STXDIV	45,05%	17,17%	-8,90%
NF Equity Value ETF	NFEVAL	44,62%	14,35%	-6,07%
Satrix RAFI 40 Portfolio	STXRAF	39,90%	16,50%	-7,00%
Satrix RESI Portfolio	STXRES	36,45%	27,41%	-20,25%

BOTTOM 5 INSTRUMENTS	CODE	TOTAL RETURN	VOLATILITY	MAX DRAW DOWN
Sygnia Itrix MSCI EM 50	SYGEMF	-11,71%	18,51%	-19,76%
Sygnia Itrix 4Ind Rev Gb	SYG4IR	-22,47%	26,89%	-31,05%
1investRhodium ETF	ETFRHO	-25,06%	63,78%	-64,94%
Satrix MSCI China ETF	STXCHN	-31,32%	23,74%	-34,08%
Africa Sovereign Bond ETF	ASBI	-45,77%	59,28%	-48,92%

Total Return is the monthly/annual performance incorporating price performance and immediate reinvestment of dividends. Volatility is the based on daily price standard deviation and presented as a monthly/annual volatility. Maximum draw down measures the worst case return outcome for an investor over the course of the period – based on purchase and subsequent sale timing that results in the largest loss of capital.

MONTHLY VALUE TRADED FOR ALL ETFs



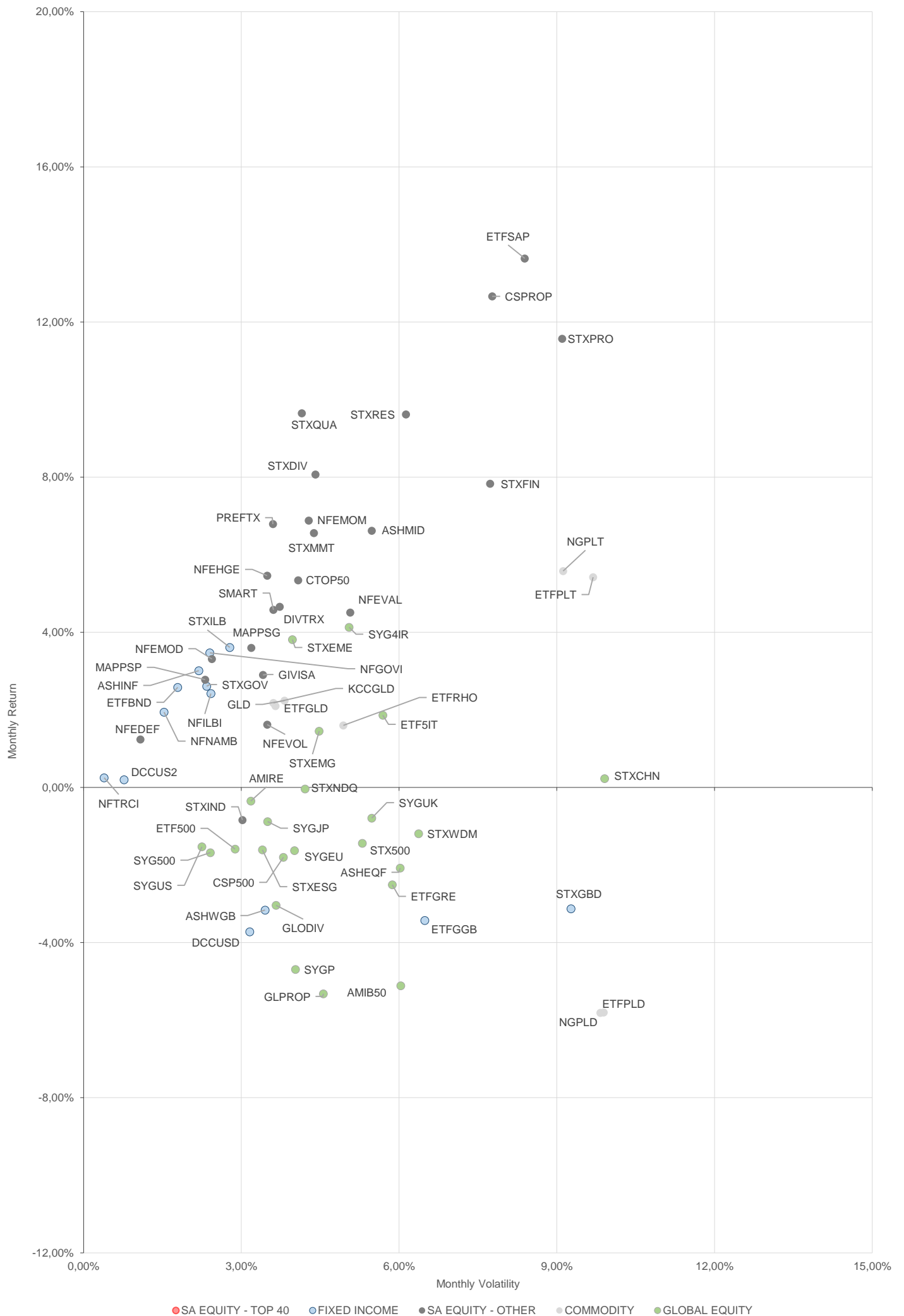
MONTHLY ETF TRADE STATISTICS | Top & Bottom Five Funds

TOP 5 INSTRUMENTS	CODE	VOLUME	VALUE	TRADES	LIQUIDITY
Satrix S&P 500 Feeder	STX500	6 175 480	R419 809 993,40	2 019	15,68%
Satrix MSCI World Feeder	STXWDM	5 754 078	R368 906 432,70	1 848	5,89%
Sygnia Itrix MSCI World	SYGWD	4 085 349	R189 825 611,40	1 487	1,62%
Satrix DIVI Plus Portfolio	STXDIV	15 068 352	R50 351 990,25	1 052	2,29%
Dollar Custodial Cert	DCCUSD	15 874	R24 154 069,80	12	11,76%

BOTTOM 5 INSTRUMENTS	CODE	VOLUME	VALUE	TRADES	LIQUIDITY
Satrix ILBI Portfolio	STXILB	3 288 783	R22 872 150,57	244	6,45%
1investRhodium ETF	ETFRHO	7 687	R21 201 433,57	324	4,18%
KR Custodial Certificate	KCCGLD	325	R9 388 004,50	22	1,03%
1invest G7 Govt Bond ETF	ETFGGB	14 021	R1 156 659,46	83	2,93%
NF VM Defensive Equity/ETF	NFEDEF	13 300	R145 510,18	17	0,26%

Volume, Value and Trades are the aggregate counts of all trade activity in the ETF for the month on the JSE equity market. This includes central order book and reported trades, but excludes creations and redemptions. Liquidity is the total volume traded expressed as a percentage of the number of listed instruments for the ETF as at the end of the month.

TOTAL RETURN VERSUS VOLATILITY



● SA EQUITY - TOP 40 ● FIXED INCOME ● SA EQUITY - OTHER ● COMMODITY ● GLOBAL EQUITY

MONTHLY DETAILED ETF INFORMATION

COMMODITIES

		Prices in Rands				In Rands		Values in Mn's		in 000's in Mn's		
INVEST ETF ISSUER (RF) LIMITED	CODE	START	LOW	HIGH	END	1M %	DISTRIBUTION	MCAP OPEN	MCAP CLOSE	VOL	VALUE	TRADES
1InvestGold ETF	ETFGLD	268,66	266,51	298,01	288,15	7,25	--	494,33	530,20	0,12	34,28	349,00
1InvestPalladium ETF	ETFPLD	349,93	325,28	377,33	374,57	7,04	--	1103,70	1181,41	0,23	82,37	157,00
1InvestPlatinum ETF	ETFPLT	153,45	149,48	167,54	158,56	3,33	--	2707,63	1968,52	1,23	191,83	176,00
1InvestRhodium ETF	ETFRHO	2425,93	2400,00	3042,26	2929,16	20,74	--	446,14	538,69	0,01	21,20	324,00

FIRSTRAND BANK LIMITED	CODE	START	LOW	HIGH	END	1M %	DISTRIBUTION	MCAP OPEN	MCAP CLOSE	VOL	VALUE	TRADES
KR Custodial Certificate	KCCGLD	28220,00	28380,00	30834,00	30254,00	7,21	--	889,35	953,45	0,00	9,39	22,00

NEWGOLD ISSUER (RF) LIMITED	CODE	START	LOW	HIGH	END	1M %	DISTRIBUTION	MCAP OPEN	MCAP CLOSE	VOL	VALUE	TRADES
New Gold Issuer Ltd	GLD	257,27	255,45	282,21	275,81	7,21	--	15533,43	16542,52	2,78	741,57	2700,00
New Gold Platinum ETF	NGPLT	152,17	147,93	166,14	157,37	3,42	--	7349,81	7522,29	1,10	171,60	632,00
NewGold Palladium ETF	NGPLD	350,48	327,56	408,42	375,05	7,01	--	429,23	459,32	0,14	51,68	377,00

SA & GLOBAL FIXED INCOME

		Prices in Rands				In Rands		Values in Mn's		in 000's in Mn's		
STANLIB COLLECTIVE INVESTMEN' CODE	CODE	START	LOW	HIGH	END	1M %	DISTRIBUTION	MCAP OPEN	MCAP CLOSE	VOL	VALUE	TRADES
1Invest G7 Govt Bond ETF	ETFGGB	83,77	80,00	89,00	83,62	-0,18	--	40,58	40,01	0,01	1,16	83,00
1Invest SA Bond ETF	ETFBND	87,14	86,43	88,23	87,09	-0,06	--	61,00	60,96	0,06	5,36	67,00

FNB CIS MANCO (RF) (PROPRIETAR CODE	START	LOW	HIGH	END	1M %	DISTRIBUTION	MCAP OPEN	MCAP CLOSE	VOL	VALUE	TRADES	
FNB WORLD GOVBOND ETF	FNBWGB	7,33	7,10	7,50	7,31	-0,27	0,03	132,93	132,56	0,54	3,86	123,00
FNB GOV INF LNKD BND ETF	FNBINF	22,00	21,79	22,87	22,67	3,05	--	407,77	420,19	0,26	5,86	125,00

FIRSTRAND BANK LIMITED	CODE	START	LOW	HIGH	END	1M %	DISTRIBUTION	MCAP OPEN	MCAP CLOSE	VOL	VALUE	TRADES
2YR Dollar Custodial Cert	DCCUS2	1508,65	1476,90	1534,90	1518,45	0,65	--	227,81	229,29	0,02	26,54	27,00
Dollar Custodial Cert	DCCUSD	1551,80	1509,40	1558,50	1558,50	0,43	--	209,49	210,40	0,02	24,15	12,00

NEWFUNDS COLLECTIVE INVESTM CODE	START	LOW	HIGH	END	1M %	DISTRIBUTION	MCAP OPEN	MCAP CLOSE	VOL	VALUE	TRADES	
NEWFUNDS TRACI 3-M ETF	NFTRCI	28,74	27,70	29,98	28,82	0,28	--	239,02	239,69	0,91	26,24	150,00
NEWFUNDS GOVI ETF	NFGOVI	80,18	79,11	84,48	79,81	-0,46	0,54	3240,81	3225,85	2,63	212,37	1898,00
NEWFUNDS ILBI ETF	NFILBI	80,07	80,13	82,37	81,65	1,97	0,18	112,10	114,31	0,03	2,84	77,00
NFNAM 10 Bonds	NFNAMB	16,66	16,45	16,79	16,47	-1,14	--	340,40	336,52	0,71	11,69	23,00

Satrix Managers (RF) (Pty) Ltd	CODE	START	LOW	HIGH	END	1M %	DISTRIBUTION	MCAP OPEN	MCAP CLOSE	VOL	VALUE	TRADES
Satrix ILBI Portfolio	STXILB	6,86	6,75	7,11	7,03	2,48	--	315,67	358,64	3,29	22,87	244,00
Satrix Global Bond ETF	STXGBD	38,74	36,02	39,78	38,54	-0,52	--	42,66	42,44	0,06	2,47	66,00
Satrix SA Bond Portfolio	STXGOV	8,69	8,51	8,90	8,62	-0,81	--	573,37	620,47	7,91	68,65	702,00

The information, data and compilations, or any part thereof, which make up the JSE ETF Factsheet ("Data") is being provided to you strictly for informational purposes. JSE Limited ("JSE") reserves the right to withdraw, modify, or replace the Data (or any part thereof) at any time.

To the extent allowed by law, JSE does not (expressly, tacitly or impliedly) guarantee or warrant the availability, sequence, accuracy, completeness, reliability or any other aspect of any of the Data or that the Data contained therein is up to date. To the extent allowed by law, neither the JSE nor any of its directors, officers, employees, contractors, agents or representatives are liable to any way to the reader/user or to any other natural or juristic person (Person) for any loss or damage as a result of any errors contained in the specification, for any loss arising from use of, or reliance on the Data in this JSE ETF Factsheet or any actions taken or not taken by or behalf of any Person in reliance on any Data in this JSE ETF Factsheet. You may not copy, reproduce, redistribute, alter or transmit any Data without the prior written consent of the JSE.

The Johannesburg Stock Exchange prides itself on a 130 year history as an effective, reputable trading platform. We are currently ranked the 19th largest stock exchange in the world based on market capitalization, and the largest exchange on the African continent. The JSE offers secure and efficient primary and secondary capital markets across a diverse range of asset classes which include equities, commodities, currencies, interest rates and bonds. We are the exchange of choice for local and international investors looking for investment opportunities across leading capital markets in South Africa and the broader African continent.

The JSE's achievements escalate through to this year's 20th anniversary of the first ETF listing on the local Exchange Traded Fund (ETF) market. Today, the ETF market capitalization is close to R90bn with over 70 listed ETFs on the JSE Main Board.

Our Primary Markets Team is a key access point for existing and/or potential issuers to gain exposure to local and international investor capital. The team focuses on listing companies and instruments on the Equity (Main Board and AltX) or Debt Market and aids in product development.

Contact the team: listingontheJSE@jse.co.za

Our Information Services Team works to deliver world class market data to our clients. This data can often be customized on request providing our clients with the exact Intel required to make business and portfolio decisions.

We offer live, delayed, end of day, reference and historical market data for:

- Equities
- Indices
- Equity Derivatives
- Commodity Derivatives
- Commodity Derivatives
- Currency Derivatives
- Interest Rate Derivatives
- Bonds
- Market Announcements (SENS)

We have nearly 170 indices across a wide variety of methodologies and investment criteria.

Our partnership with FTSE Russell includes:

- FTSE/JSE All Share
- FTSE/JSE Top 40
- FTSE/JSE ESG
- FTSE/JSE Factor Indices
- FTSE/JSE Shariah
- FTSE/JSE RAFI and many more

We develop customised indices to suit your needs.

- Our other service offerings include:
- Bond ETP data
- Tick data
- Corporate Actions
- Business Intelligence Reports
- Valuations

Contact the team: mdclients@jse.co.za