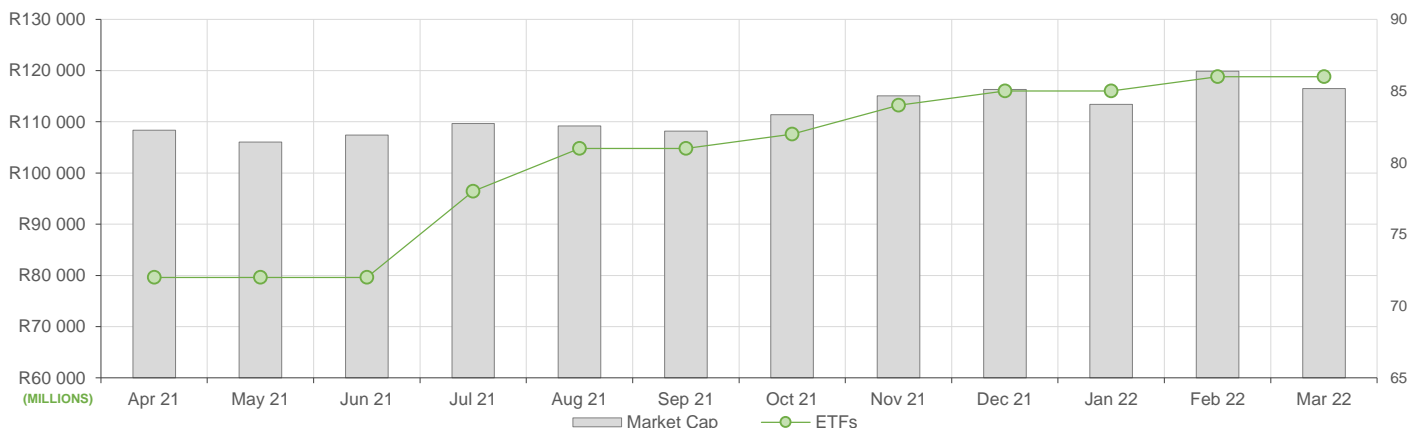


NEW LISTINGS AND DELISTINGS

ETF	CODE	ISSUER	EVENT	DATE
-----	------	--------	-------	------

MARKET CAPITALISATION ANALYSIS | Total Industry



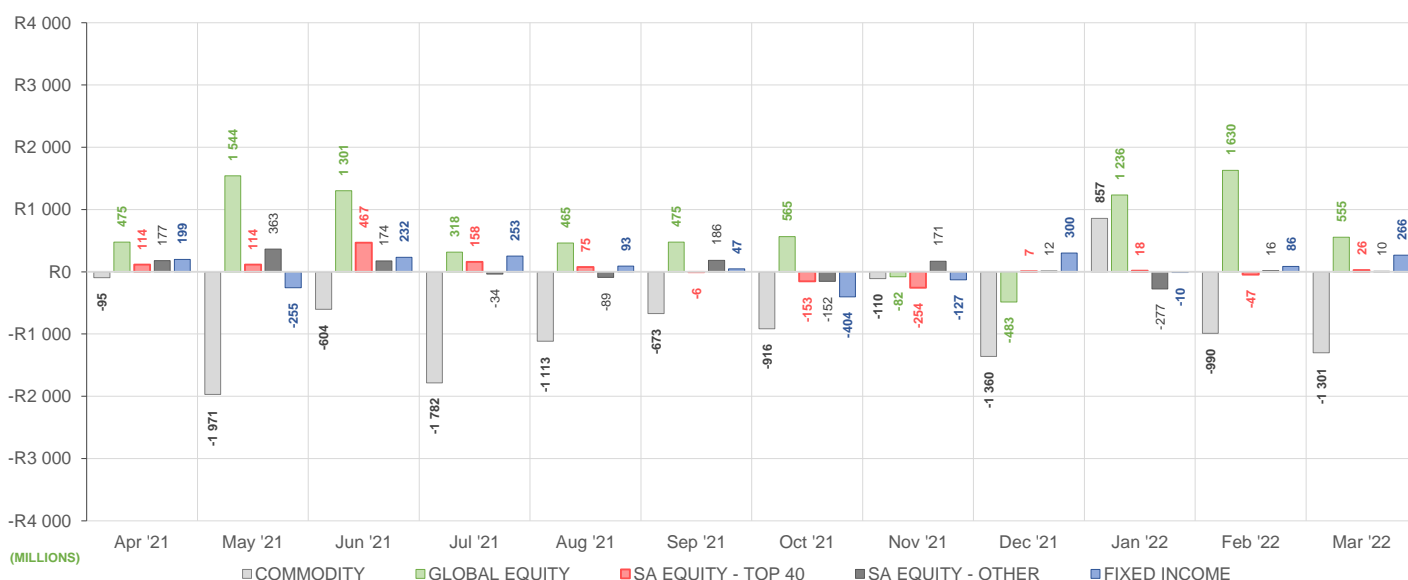
NET DAILY EXCHANGE CREATIONS AND REDEMPTIONS | Top & Bottom Five ETFs

TOP 5 INSTRUMENTS	CODE	TOTAL DAILY CREATIONS	TOTAL DAILY REDEMPTIONS	NET MONTHLY CREATIONS
New Gold Issuer Ltd	GLD	R483 437 500	-R109 803 000	R373 634 500
Sygnia Itrix MSCI EM 50	SYGEMF	R337 753 952	---	R337 753 952
Sygnia Itrix Eurostoxx50	SYGEU	R303 344 357	---	R303 344 357
Satrix SA Bond Portfolio	STXGOV	R133 890 000	---	R133 890 000
1investPlatinum ETF	ETFPLT	R148 872 950	-R18 291 350	R130 581 600

BOTTOM 5 INSTRUMENTS	CODE	TOTAL DAILY CREATIONS	TOTAL DAILY REDEMPTIONS	NET MONTHLY CREATIONS
Satrix MSCI China ETF	STXCHN	R18 412 000	-R107 875 500	-R89 463 500
1invest SA Property ETF	ETFSAPE	R3 248 350	-R173 655 600	-R170 407 250
Sygnia Itrix MSCI World	SYGWD	---	-R358 407 503	-R358 407 503
New Gold Platinum ETF	NGPLT	---	-R971 098 000	-R971 098 000
1investPalladium ETF	ETFPLD	R59 760 000	-R1 048 275 150	-R988 515 150

Considers the daily update to total number of issued units listed on the exchange over the calendar month, with Creations representing a day-on-day increase in total number of listed units, and Redemptions representing a decrease. An average day-on-day price is used to estimate the ZAR value of each net daily movement. No secondary market transactions are considered.

NET MONTHLY EXCHANGE CREATIONS AND REDEMPTIONS



MONTHLY ETF PERFORMANCE | Top & Bottom Five ETFs

TOP 5 INSTRUMENTS	CODE	TOTAL RETURN	VOLATILITY	MAX DRAW DOWN
Satrix FINI Portfolio	STXFIN	10,12%	8,98%	-8,95%
FNB MIDCAP ETF	FNB MID	4,83%	6,47%	-6,62%
Satrix I & D ETF	STXID	4,57%	7,96%	-8,29%
CoreShares PrefTrax	PREFTX	3,81%	13,27%	-9,16%
1invest SA Property ETF	ETFSAP	3,68%	14,51%	-8,24%

BOTTOM 5 INSTRUMENTS	CODE	TOTAL RETURN	VOLATILITY	MAX DRAW DOWN
New Gold Platinum ETF	NGPLT	-11,40%	13,43%	-21,25%
Satrix MSCI China ETF	STXCHN	-13,40%	18,50%	-25,51%
1investPalladium ETF	ETFPD	-19,28%	24,39%	-35,21%
NewGold Palladium ETF	NGPLD	-19,98%	23,90%	-35,62%
1invest TOP 40 ETF	ETFT40	-97,99%	383,79%	-98,78%

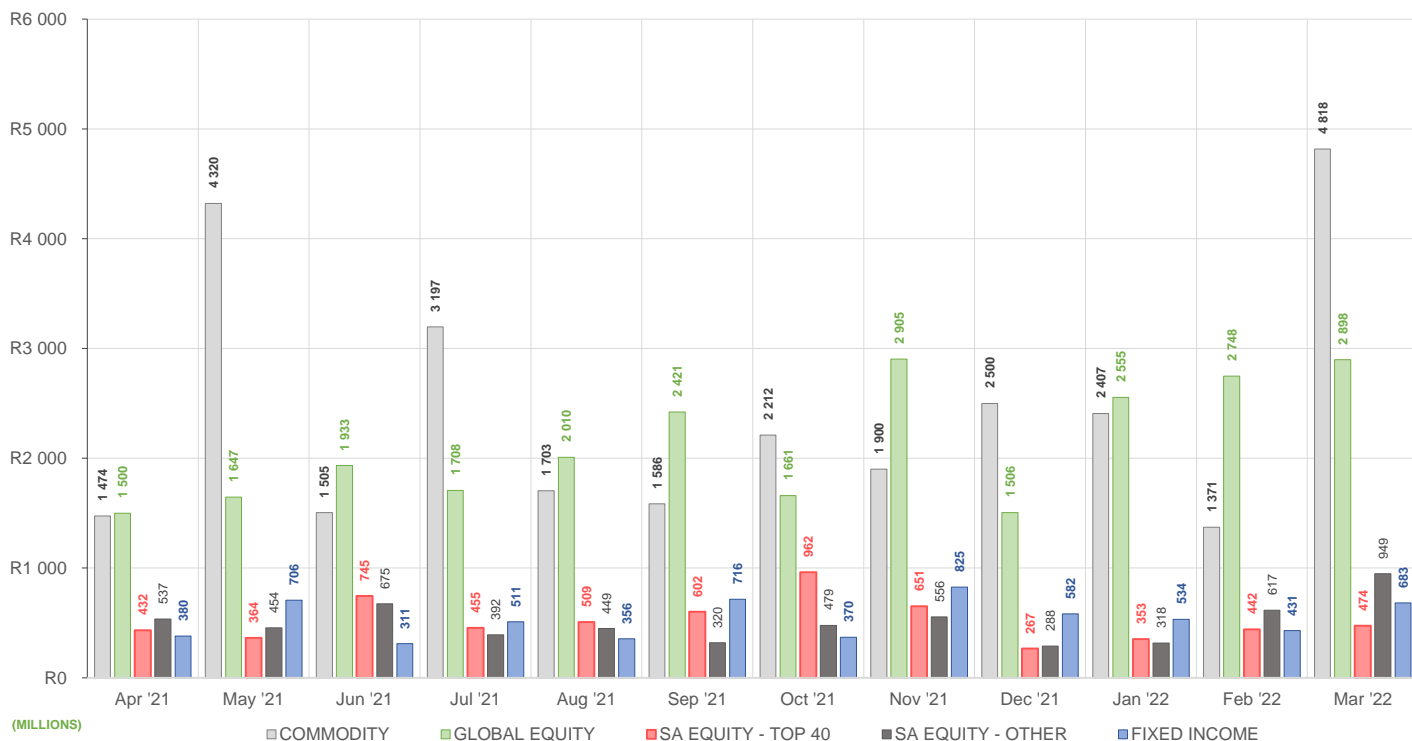
ROLLING 12-MONTH ETF PERFORMANCE | Top & Bottom Five ETFs

TOP 5 INSTRUMENTS	CODE	TOTAL RETURN	VOLATILITY	MAX DRAW DOWN
CoreShares PrefTrax	PREFTX	51,78%	19,61%	-9,89%
Satrix FINI Portfolio	STXFIN	47,91%	20,27%	-11,10%
NF Equity Value ETF	NFEVAL	42,45%	15,04%	-6,24%
Satrix RAFI 40 Portfolio	STXRAF	41,98%	17,28%	-7,51%
Satrix DIVI Plus Portfolio	STXDIV	40,31%	17,69%	-9,86%

BOTTOM 5 INSTRUMENTS	CODE	TOTAL RETURN	VOLATILITY	MAX DRAW DOWN
1investPlatinum ETF	ETFPD	-18,83%	41,74%	-25,74%
Sygnia Itrix MSCI EM 50	SYGEMF	-19,88%	21,47%	-32,27%
Sygnia Itrix 4Ind Rev Gb	SYG4IR	-22,30%	25,12%	-31,49%
1investRhodium ETF	ETFRHO	-28,99%	64,49%	-62,93%
Satrix MSCI China ETF	STXCHN	-34,46%	29,77%	-44,46%

Total Return is the monthly/annual performance incorporating price performance and immediate reinvestment of dividends. Volatility is based on daily price standard deviation and presented as a monthly/annual volatility. Maximum draw down measures the worst case return outcome for an investor over the course of the period – based on purchase and subsequent sale timing that results in the largest loss of capital.

MONTHLY VALUE TRADED FOR ALL ETFs



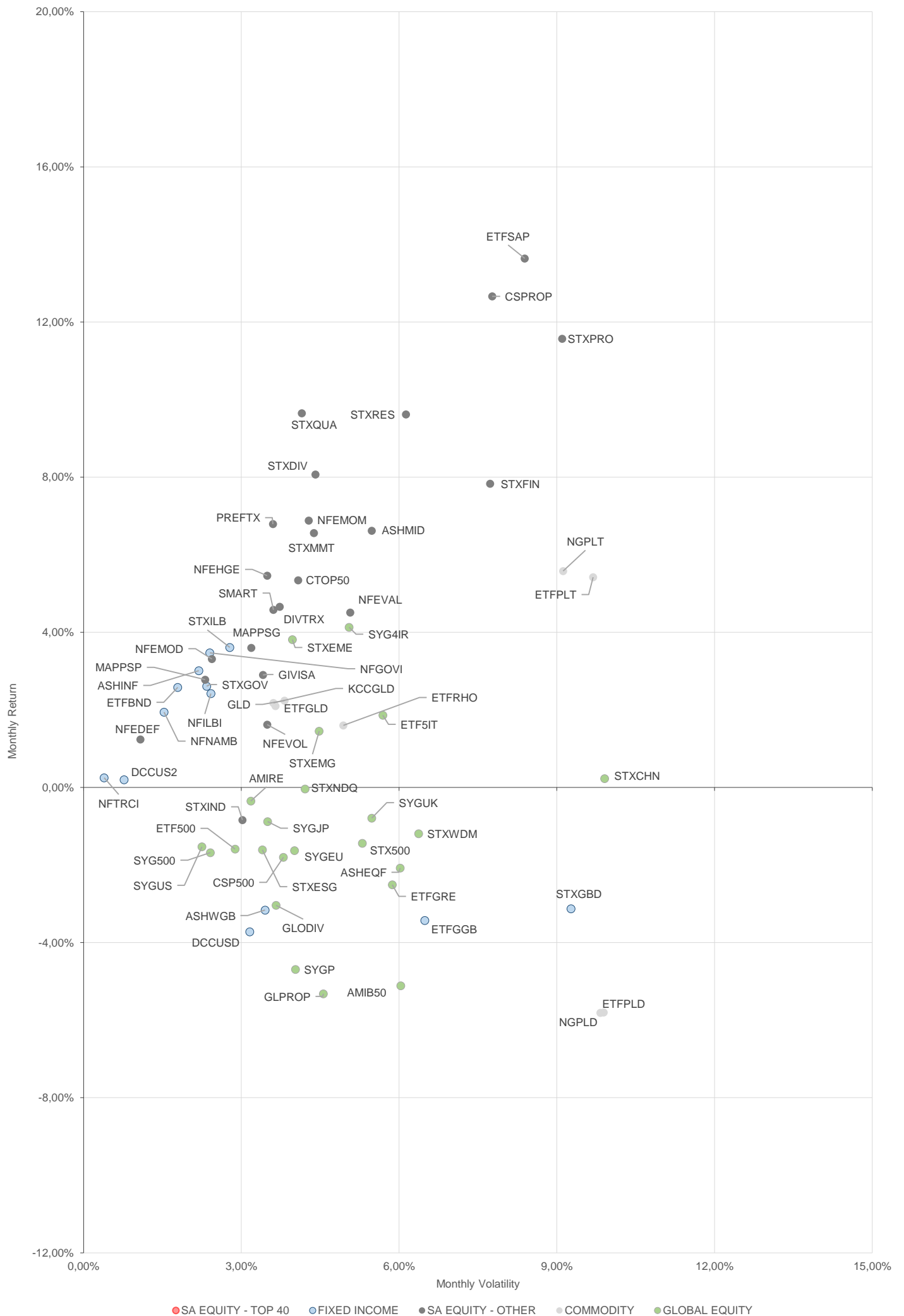
MONTHLY ETF TRADE STATISTICS | Top & Bottom Five Funds

TOP 5 INSTRUMENTS	CODE	VOLUME	VALUE	TRADES	LIQUIDITY
New Gold Platinum ETF	NGPLT	8 189 775	R1 289 977 675,00	3 016	19,73%
Sygnia Itrix MSCI World	SYGWD	12 703 466	R567 793 643,40	1 667	5,20%
1invest SA Property ETF	ETFSAP	8 351 592	R246 758 236,70	705	51,50%
Satrix DIVI Plus Portfolio	STXDIV	15 610 264	R54 687 885,30	1 269	2,35%
Satrix ILBI Portfolio	STXILB	7 580 617	R53 534 429,63	365	13,53%

BOTTOM 5 INSTRUMENTS	CODE	VOLUME	VALUE	TRADES	LIQUIDITY
1investRhodium ETF	ETFRHO	14 806	R40 876 397,02	471	7,92%
KR Custodial Certificate	KCCGLD	225	R6 806 216,00	23	0,71%
2YR Dollar Custodial Cert	DCCUS2	2 808	R4 110 502,20	21	1,86%
Newfunds MAPPS Growth	MAPPSG	15 689	R429 480,74	47	0,87%
NF VM Moderate Equity ETF	NFEMOD	7 902	R85 584,97	17	0,14%

Volume, Value and Trades are the aggregate counts of all trade activity in the ETF for the month on the JSE equity market. This includes central order book and reported trades, but excludes creations and redemptions. Liquidity is the total volume traded expressed as a percentage of the number of listed instruments for the ETF as at the end of the month.

TOTAL RETURN VERSUS VOLATILITY



● SA EQUITY - TOP 40 ● FIXED INCOME ● SA EQUITY - OTHER ● COMMODITY ● GLOBAL EQUITY

MONTHLY DETAILED ETF INFORMATION

COMMODITIES

		Prices in Rands				In Rands		Values in Mn's		in 000's in Mn's		
INVEST ETF ISSUER (RF) LIMITED	CODE	START	LOW	HIGH	END	1M %	DISTRIBUTION	MCAP OPEN	MCAP CLOSE	VOL	VALUE	TRADES
1InvestGold ETF	ETFGLD	288,66	220,00	310,00	276,13	-4,34	--	531,13	535,69	0,20	57,69	390,00
1InvestPalladium ETF	ETFPLD	400,33	293,66	514,95	323,16	-19,28	--	1262,66	198,44	2,67	1,078,86	545,00
1InvestPlatinum ETF	ETFPLT	157,58	135,80	174,72	139,69	-11,35	--	1956,36	1846,00	0,82	130,88	192,00
1InvestRhodium ETF	ETFRHO	2899,50	2400,00	3334,00	2722,50	-6,10	--	533,23	508,85	0,01	40,88	471,00

FIRSTRAND BANK LIMITED	CODE	START	LOW	HIGH	END	1M %	DISTRIBUTION	MCAP OPEN	MCAP CLOSE	VOL	VALUE	TRADES
KR Custodial Certificate	KCCGLD	30308,50	28807,00	31685,00	28997,00	-4,33	--	955,17	913,84	0,00	6,81	23,00

NEWGOLD ISSUER (RF) LIMITED	CODE	START	LOW	HIGH	END	1M %	DISTRIBUTION	MCAP OPEN	MCAP CLOSE	VOL	VALUE	TRADES
New Gold Issuer Ltd	GLD	276,11	256,81	299,00	264,22	-4,31	--	16560,51	16190,86	6,76	1,879,72	5633,00
New Gold Platinum ETF	NGPLT	156,45	134,81	177,23	138,61	-11,40	--	7478,31	5752,32	8,19	1,289,98	3016,00
NewGold Palladium ETF	NGPLD	401,28	292,40	502,54	321,12	-19,98	--	491,45	489,61	0,68	289,74	721,00

SA & GLOBAL FIXED INCOME

		Prices in Rands				In Rands		Values in Mn's		in 000's in Mn's		
STANLIB COLLECTIVE INVESTMEN' CODE	CODE	START	LOW	HIGH	END	1M %	DISTRIBUTION	MCAP OPEN	MCAP CLOSE	VOL	VALUE	TRADES
1Invest G7 Govt Bond ETF	ETFGGB	84,08	74,70	85,11	76,47	-9,05	--	40,23	37,35	0,13	10,09	129,00
1Invest SA Bond ETF	ETFBND	86,59	82,19	88,12	87,35	0,88	--	60,61	78,61	0,15	12,74	96,00

FNB CIS MANCO (RF) (PROPRIETAR CODE	START	LOW	HIGH	END	1M %	DISTRIBUTION	MCAP OPEN	MCAP CLOSE	VOL	VALUE	TRADES	
FNB WORLD GOVBOND ETF	FNBWGB	7,35	6,47	7,45	6,68	-9,12	--	133,29	121,14	1,58	11,05	211,00
FNB GOV INF LNKD BND ETF	FNBINF	22,67	22,27	22,90	22,69	0,09	--	420,19	420,56	0,51	11,69	131,00

FIRSTRAND BANK LIMITED	CODE	START	LOW	HIGH	END	1M %	DISTRIBUTION	MCAP OPEN	MCAP CLOSE	VOL	VALUE	TRADES
2YR Dollar Custodial Cert	DCCUS2	1516,25	1411,40	1505,20	1419,30	-6,39	--	228,95	214,31	0,00	4,11	21,00
Dollar Custodial Cert	DCCUSD	1562,00	1417,80	1580,80	1432,25	-8,31	--	210,87	193,35	0,06	94,33	25,00

NEWFUNDS COLLECTIVE INVESTM CODE	START	LOW	HIGH	END	1M %	DISTRIBUTION	MCAP OPEN	MCAP CLOSE	VOL	VALUE	TRADES	
NEWFUNDS TRACI 3-M ETF	NFTRCI	28,83	28,73	29,00	28,91	0,28	--	239,77	240,44	0,28	8,12	143,00
NEWFUNDS GOVI ETF	NFGOVI	79,66	75,80	81,60	80,10	0,55	--	3219,79	3317,67	3,50	275,51	1817,00
NEWFUNDS ILBI ETF	NFILBI	81,56	80,53	82,39	80,91	-0,80	0,18	114,18	113,27	0,07	5,93	101,00
NFNAM 10 Bonds	NFNAMB	16,46	16,09	16,53	16,49	0,18	--	336,31	336,93	0,01	0,20	20,00

Satrix Managers (RF) (Pty) Ltd	CODE	START	LOW	HIGH	END	1M %	DISTRIBUTION	MCAP OPEN	MCAP CLOSE	VOL	VALUE	TRADES
Satrix ILBI Portfolio	STXILB	7,02	6,87	7,18	7,00	-0,28	--	358,13	392,11	7,58	53,53	365,00
Satrix Global Bond ETF	STXGBD	38,73	34,70	39,48	35,50	-8,34	--	42,65	39,09	0,11	4,08	78,00
Satrix SA Bond Portfolio	STXGOV	8,59	8,00	8,77	8,67	0,93	--	618,31	762,79	21,66	183,35	588,00

The information, data and compilations, or any part thereof, which make up the JSE ETF Factsheet ("Data") is being provided to you strictly for informational purposes. JSE Limited ("JSE") reserves the right to withdraw, modify, or replace the Data (or any part thereof) at any time.

To the extent allowed by law, JSE does not (expressly, tacitly or impliedly) guarantee or warrant the availability, sequence, accuracy, completeness, reliability or any other aspect of any of the Data or that the Data contained therein is up to date. To the extent allowed by law, neither the JSE nor any of its directors, officers, employees, contractors, agents or representatives are liable to any way to the reader/user or to any other natural or juristic person (Person) for any loss or damage as a result of any errors contained in the specification, for any loss arising from use of, or reliance on the Data in this JSE ETF Factsheet or any actions taken or not taken by or behalf of any Person in reliance on any Data in this JSE ETF Factsheet. You may not copy, reproduce, redistribute, alter or transmit any Data without the prior written consent of the JSE.

The Johannesburg Stock Exchange prides itself on a 130 year history as an effective, reputable trading platform. We are currently ranked the 19th largest stock exchange in the world based on market capitalization, and the largest exchange on the African continent. The JSE offers secure and efficient primary and secondary capital markets across a diverse range of asset classes which include equities, commodities, currencies, interest rates and bonds. We are the exchange of choice for local and international investors looking for investment opportunities across leading capital markets in South Africa and the broader African continent.

The JSE's achievements escalate through to this year's 20th anniversary of the first ETF listing on the local Exchange Traded Fund (ETF) market. Today, the ETF market capitalization is close to R90bn with over 70 listed ETFs on the JSE Main Board.

Our Primary Markets Team is a key access point for existing and/or potential issuers to gain exposure to local and international investor capital. The team focuses on listing companies and instruments on the Equity (Main Board and AltX) or Debt Market and aids in product development.

Contact the team: listingontheJSE@jse.co.za

Our Information Services Team works to deliver world class market data to our clients. This data can often be customized on request providing our clients with the exact Intel required to make business and portfolio decisions.

We offer live, delayed, end of day, reference and historical market data for:

- Equities
- Indices
- Equity Derivatives
- Commodity Derivatives
- Commodity Derivatives
- Currency Derivatives
- Interest Rate Derivatives
- Bonds
- Market Announcements (SENS)

We have nearly 170 indices across a wide variety of methodologies and investment criteria.

Our partnership with FTSE Russell includes:

- FTSE/JSE All Share
- FTSE/JSE Top 40
- FTSE/JSE ESG
- FTSE/JSE Factor Indices
- FTSE/JSE Shariah
- FTSE/JSE RAFI and many more

We develop customised indices to suit your needs.

- Our other service offerings include:
- Bond ETP data
- Tick data
- Corporate Actions
- Business Intelligence Reports
- Valuations

Contact the team: mdclients@jse.co.za