

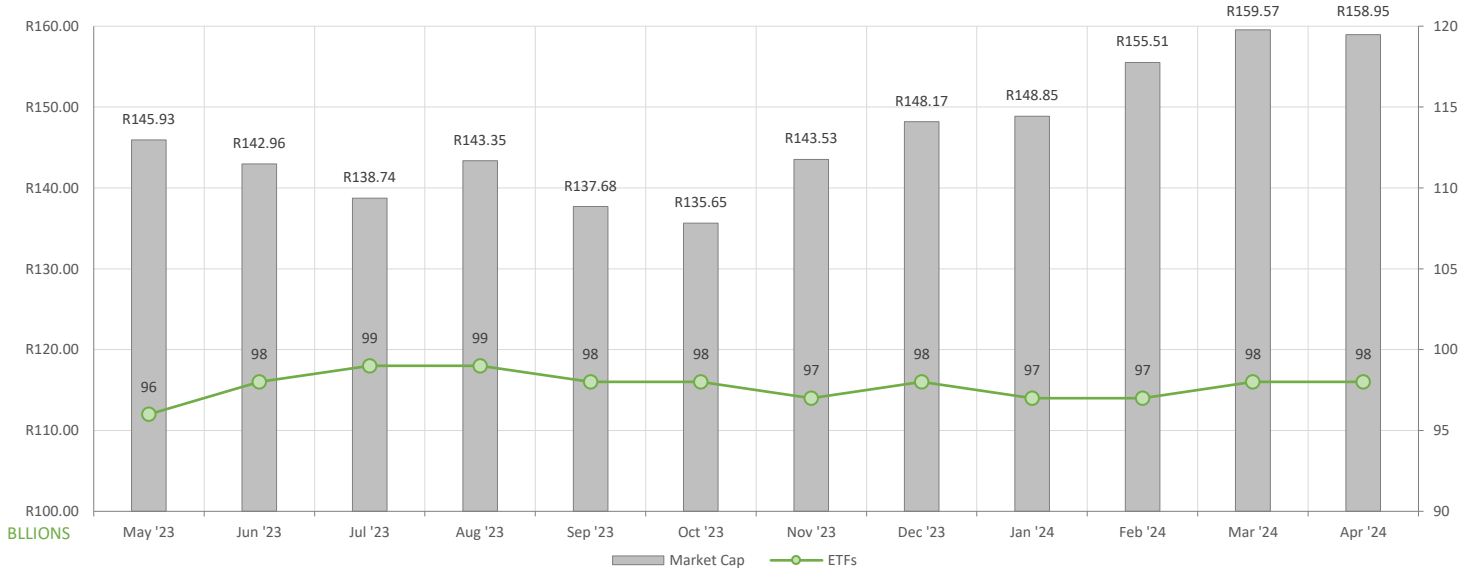
April showed slight increased ETF activity compared to March, here is what we have seen:

- ETF Market Capitalization a showed a month-on-month decrease of 0.4%. ETF unit creations were largely in commodity and global equity ETFs.
- Month-on-month ETF value traded was higher compared to March's activity, reflecting roughly R7.5bn in total value traded during the month.
- Month-on-Month ETF returns showed largely negative performances across most ETFs, except SA equity ETFs.

NEW LISTINGS & DELISTINGS

ETF	CODE	ISSUER	EVENT	DATE
---	---	---	---	---

MARKET CAPITALISATION ANALYSIS | Total Industry



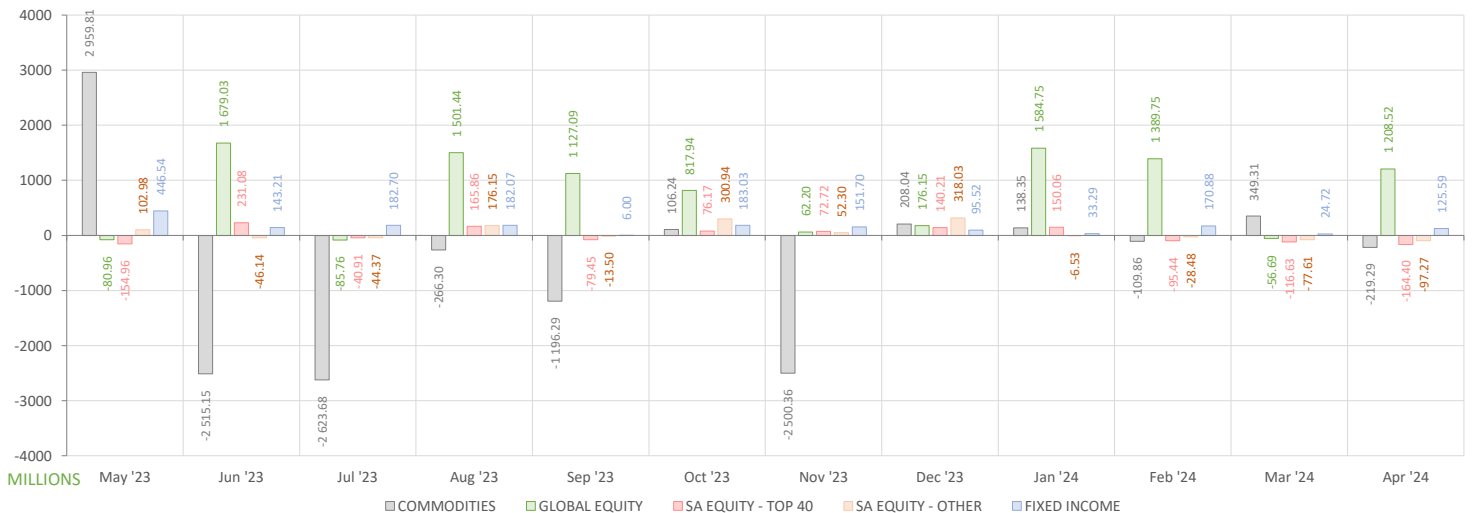
NET DAILY EXCHANGE CREATION & REDEMPTIONS | Top & Bottom Five ETFs

TOP FIVE INSTRUMENTS	CODE	TOTAL DAILY CREATIONS	TOTAL DAILY REDEMPTIONS	NET MONTHLY CREATIONS
1InvestPlatinum ETF	ETFPLT	R624 169 000.00	-R250 086 375.00	R374 082 625.00
Satrix S&P 500 Feeder	STX500	R324 967 000.00	---	R324 967 000.00
1InvestPalladium ETF	ETFPLD	R310 109 250.00	---	R310 109 250.00
Satrix MSCI World Feeder	STXWDM	R307 220 500.00	---	R307 220 500.00
SFN ACTIVELY MANAGED ETF	SYFANG	R141 421 447.90	---	R141 421 447.90

BOTTOM FIVE INSTRUMENTS	CODE	TOTAL DAILY CREATIONS	TOTAL DAILY REDEMPTIONS	NET MONTHLY CREATIONS
New Gold Platinum ETF	NGPLT	R68 088 500.00	-R200 335 500.00	-R132 247 000.00
New Gold Issuer Ltd	GLD	---	-R166 270 000.00	-R166 270 000.00
Satrix Capped ALL Share	STXCAP	---	-R237 629 000.00	-R237 629 000.00
Sygnia Itrix 4Ird Rev Gb	SYG4IR	---	-R258 978 571.30	-R258 978 571.30
1InvestGold ETF	ETFGLD	R85 954 000.00	-R615 220 000.00	-R529 266 000.00

Considers the daily update to total number of issued units listed on the exchange over the calendar month, with Creations representing a day-on-day increase in total number of listed units, and Redemptions representing a decrease. An average day-on-day price is used to estimate the ZAR value of each net daily movement. No secondary market transactions are considered.

NET MONTHLY EXCHANGE CREATIONS & REDEMPTIONS



MONTHLY ETF PERFORMANCE | Top & Bottom Five ETFs

TOP FIVE INSTRUMENTS	CODE	TOTAL RETURN	VOLATILITY	MAX DRAW DOWN
Satrix RESI Portfolio	STXRES	7.94%	11.78%	-9.32%
Satrix MSCI China ETF	STXCHN	6.59%	5.45%	-2.24%
10X DivTrax	DIVTRX	5.71%	4.09%	-3.12%
Satrix Namibia Bond ETF	STXNAM	5.55%	4.03%	-1.30%
10X Top 50	CTOP50	5.52%	4.13%	-3.78%

BOTTOM FIVE INSTRUMENTS	CODE	TOTAL RETURN	VOLATILITY	MAX DRAW DOWN
Sygnia Itrix 4Ind Rev Gb	SYG4IR	-7.05%	7.06%	-5.74%
RW ACTIVELY MANAGED ETF	RWAGP	-7.17%	5.42%	-4.58%
Reitway DV Property ETF	RWDVF	-7.56%	5.44%	-5.34%
1InvestPalladium ETF	ETFPLD	-7.91%	10.03%	-12.42%
NewGold Palladium ETF	NGPLD	-8.41%	10.16%	-13.01%

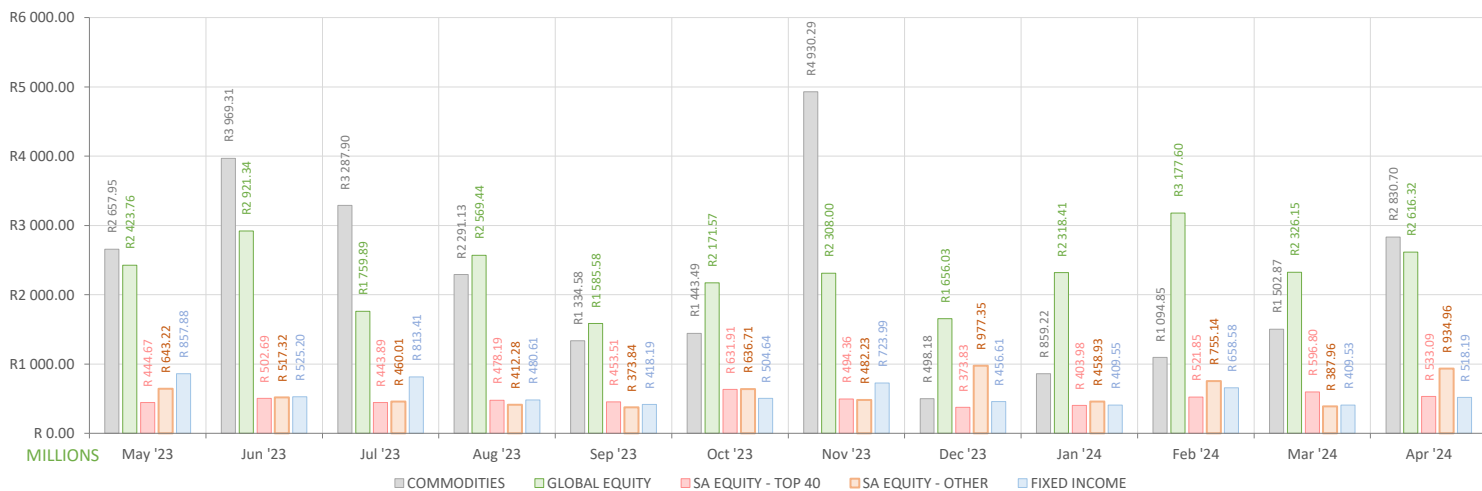
ROLLING 12-MONTH ETF PERFORMANCE | Top & Bottom Five ETFs

TOP FIVE INSTRUMENTS	CODE	TOTAL RETURN	VOLATILITY	MAX DRAW DOWN
1Invest S&P500 IT ETF	ETF5IT	45.56%	24.62%	-11.27%
Satrix Nasdaq 100 Prtf	STXNDQ	38.49%	20.08%	-10.32%
Satrix MSCI India ETF	STXNDA	35.72%	15.26%	-7.28%
SFN ACTIVELY MANAGED ETF	SYFANG	28.81%	18.30%	-8.18%
Sygnia Itrix S&P 500 ETF	SYG500	27.73%	15.67%	-10.22%

BOTTOM FIVE INSTRUMENTS	CODE	TOTAL RETURN	VOLATILITY	MAX DRAW DOWN
Sygnia Itrix New China Sectors ETF	SYGCN	-12.45%	20.30%	-25.46%
1InvestPalladium ETF	ETFPLD	-37.00%	36.49%	-45.93%
NewGold Palladium ETF	NGPLD	-37.30%	36.10%	-45.92%
1InvestRhodium ETF	ETFRHO	-50.52%	50.41%	-58.72%
RW GLOBAL PROPERTY ETF	RWGPR	-82.85%	192.30%	-86.09%

Total Return is the monthly/annual performance incorporating price performance and immediate reinvestment of dividends. Volatility is the based on daily price standard deviation and presented as a monthly/annual volatility. Maximum draw down measures the worst case return outcome for an investor over the course of the period – based on purchase and subsequent sale timing that results in the largest loss of capital.

MONTHLY VALUE TRADED FOR ALL ETFs



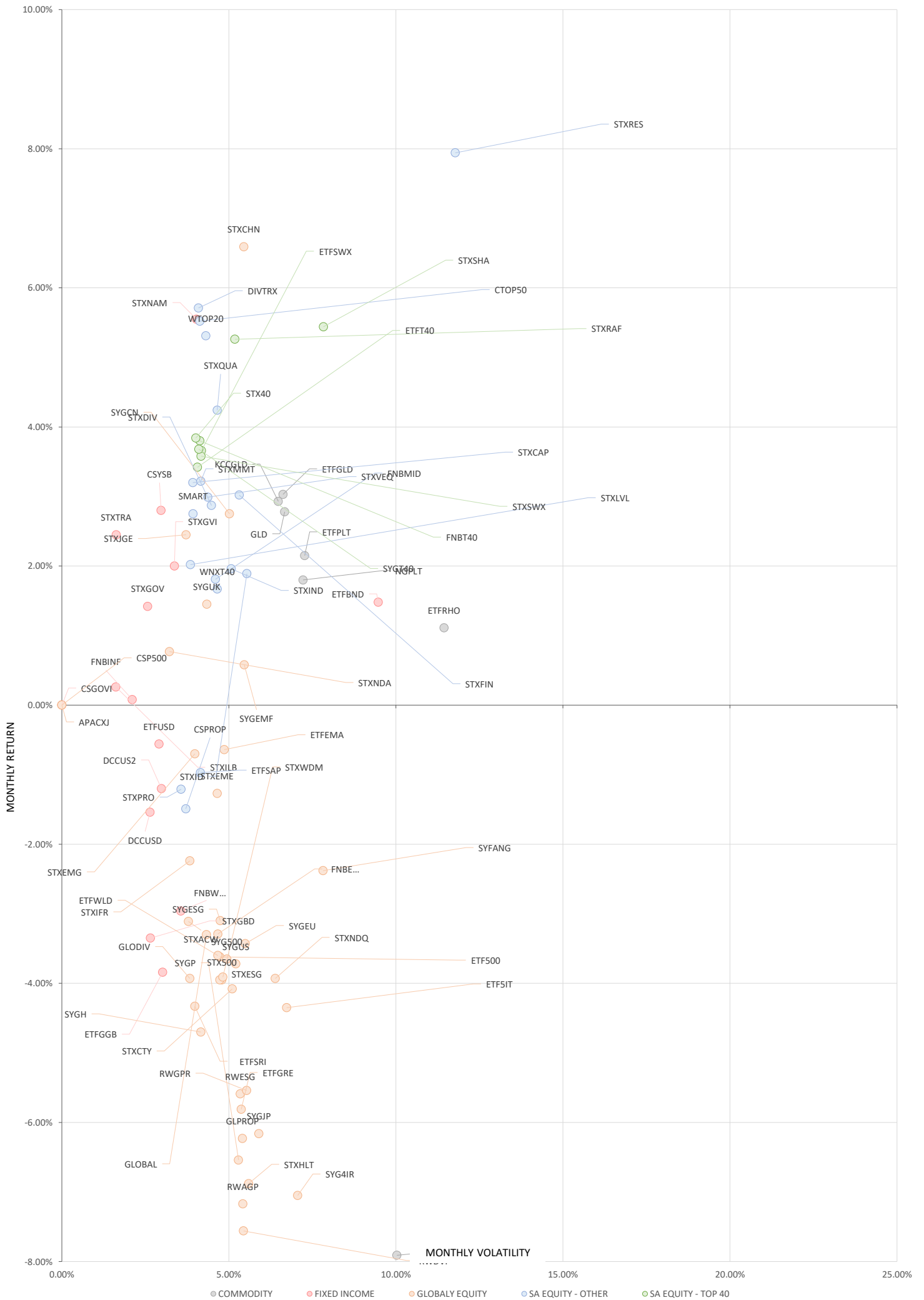
MONTHLY ETF TRADE STATISTICS | Top & Bottom Five Funds

TOP FIVE INSTRUMENTS	CODE	VOLUME	VALUE	TRADES	LIQUIDITY
Satrix Capped ALL Share	STXCAP	8002844	R299 821 576.50	377	89.12%
10X GOVI	CSGOVI	7632997	R75 199 561.09	857	3.85%
10X Wealth Top 20	WTOP20	5911187	R57 260 999.15	283	13.59%
Satrix SA Bond Portfolio	STXGOV	6403479	R50 091 812.20	711	6.04%
Satrix DIVI Plus Portfolio	STXDIV	15832995	R39 047 242.80	1005	2.44%

BOTTOM FIVE INSTRUMENTS	CODE	VOLUME	VALUE	TRADES	LIQUIDITY
Dollar Custodial Cert	DCCUSD	6543	R11 461 453.51	31	1.87%
2YR Dollar Custodial Cert	DCCUSD	1789	R3 295 267.08	18	1.18%
1InvestRhodium ETF	ETFRHO	3254	R2 600 188.39	133	1.57%
KR Custodial Certificate	KCCGLD	44	R1 981 447.99	16	0.14%
1Invest MSCI world SRI ETF	ETFSRI	3788	R619 220.05	56	2.02%

Volume, Value and Trades are the aggregate counts of all trade activity in the ETF for the month on the JSE equity market. This includes central order book and reported trades, but excludes creations and redemptions. Liquidity is the total volume traded expressed as a percentage of the number of listed instruments for the ETF as at the end of the month.

TOTAL RETURN VERSUS VOLATILITY



MONTHLY DETAILED ETF INFORMATION

COMMODITIES

		Prices in Rands				Rands		Value in Mn's		In 000's	in Mn's	
ETF (SORTED ALPHABETICALLY)		START	LOW	HIGH	END	1M%	DISTRIBUTION	MCAP OPE	MCAP CLOSE	VOLUME	VALUE	TRADES
InvestGold ETF	ETFGLD	412.55	413.52	454.99	419.75	1.75	NULL	1497.56	1019.99	1.46	637.29	433
InvestPalladium ETF	ETFPLD	181.73	170.71	193.40	170.85	-5.99	NULL	53.62	332.31	0.88	168.12	52
InvestPlatinum ETF	ETFPLT	167.65	165.31	183.73	169.90	1.34	NULL	1843.65	2246.42	3.78	643.34	153
InvestRhodium ETF	ETFRHO	781.49	746.25	870.00	794.15	1.62	NULL	162.67	164.12	0.00	2.57	129
KR Custodial Certificate	KCCGLD	43794.00	44417.00	47766.00	44540.50	1.70	NULL	1380.17	1403.69	0.00	1.89	14
New Gold Issuer Ltd	GLD	394.62	395.33	431.97	401.11	1.64	NULL	18972.52	19124.10	2.28	940.93	1910
New Gold Platinum ETF	NGPLT	166.63	164.52	181.10	168.57	1.16	NULL	7131.76	7130.51	1.87	318.28	262
NewGold Palladium ETF	NGPLD	182.11	171.53	196.37	170.20	-6.54	NULL	295.87	208.44	0.32	59.56	133

FIXED INCOME

		Prices in Rands				Rands		Value in Mn's		In 000's	in Mn's	
ETF (SORTED ALPHABETICALLY)		START	LOW	HIGH	END	1M%	DISTRIBUTION	MCAP OPE	MCAP CLOSE	VOLUME	VALUE	TRADES
10X GOVI	CSGOVI	9.91	9.62	10.11	9.79	-1.21	0.26	1962.62	1938.86	6.58	64.78	756
10X YSB	CSYSB	10.14	9.68	10.32	10.05	-0.89	0.29	316.26	313.45	1.25	12.54	254
FNB WORLD GOVBOND ETF	FNBWGB	7.34	7.10	7.45	7.21	-1.77	NULL	470.75	498.46	5.32	38.83	228
2YR Dollar Custodial Cert	DCCUS2	1836.35	1792.01	1870.70	1835.35	-0.05	NULL	277.29	277.14	0.00	3.28	17
Dollar Custodial Cert	DCCUSD	1776.05	1738.08	1802.10	1761.80	-0.80	NULL	621.62	616.63	0.01	11.46	30
Satrix Global Bond ETF	STXGBD	40.80	39.21	41.42	39.55	-3.06	0.47	555.74	558.49	0.95	38.46	261
Satrix GOVI ETF	STXGOVI	71.75	68.45	73.15	69.91	-2.56	2.91	1916.74	1895.55	2.03	145.07	1285
Satrix ILBI ETF	STXILB	7.55	7.42	7.65	7.49	-0.79	0.07	422.50	419.15	1.29	9.75	136
Satrix Namibia Bond ETF	STXNAM	19.85	19.55	20.75	20.43	2.92	0.51	510.19	525.10	0.60	12.09	127
Satrix SA Bond Portfolio	STXGOV	7.88	7.51	8.05	7.63	-3.17	0.34	858.77	808.63	6.35	49.64	685
Satrix TRACI 3 Month ETF	STXTRA	33.19	33.15	33.50	33.42	0.69	0.56	222.66	250.94	1.27	42.21	205
Invest G7 Govt Bond ETF	ETFGGB	85.08	81.96	85.46	82.50	-3.03	0.90	335.41	357.42	0.42	35.34	674
Invest SA Bond ETF	ETFBND	98.13	95.12	105.52	96.95	-1.20	2.46	176.93	174.81	0.17	16.51	147
Invest US Short-Date ETF	ETFUSD	19.33	18.76	19.70	18.95	-1.97	0.47	188.55	188.82	0.41	7.91	178

GLOBAL EQUITY

		Prices in Rands				Rands		Value in Mn's		In 000's	in Mn's	
ETF (SORTED ALPHABETICALLY)		START	LOW	HIGH	END	1M%	DISTRIBUTION	MCAP OPE	MCAP CLOSE	VOLUME	VALUE	TRADES
10X Global Prop	GLPROP	45.89	43.50	46.62	44.07	-3.97	0.52	439.34	421.92	0.19	8.47	218
10X S&P 500	CSP500	98.47	95.61	99.55	96.72	-1.78	0.44	2339.68	2317.44	0.44	43.15	1160
10X TotalWldTock	GLOBAL	14.83	14.40	15.27	14.54	-1.96	0.10	1160.32	1181.25	4.44	65.20	1004
10XAActively Managed ETF	APACXJ	10.50	10.14	10.60	10.47	-0.29	NULL	900.31	939.61	2.94	30.55	413
FNB GLOBAL 1200 FOF ETF	FNBEQF	91.23	89.31	93.06	90.19	-1.14	NULL	1989.73	1967.04	0.42	37.67	722
Reitway DV Property ETF	RWDVF	10.84	10.28	10.83	10.36	-4.43	0.05	63.96	61.12	0.17	1.73	14
Reitway ESG Property ETF	RWESG	10.71	10.31	10.74	10.40	-2.89	0.05	63.19	61.36	0.16	1.66	7
RW ACTIVELY MANAGED ETF	RWAGP	10.89	10.45	10.91	10.49	-3.67	0.04	20.62	22.90	0.29	3.10	38
RW GLOBAL PROPERTY ETF	RWGPR	10.94	10.48	11.00	10.67	-2.47	0.04	61.20	59.69	0.19	2.01	25
Satrix Global IFR ETF	STXIFR	57.75	55.56	58.90	56.83	-1.59	0.31	291.59	292.63	0.11	6.20	175
Satrix Healthcare Inn ETF	STXHLT	70.78	66.96	71.16	68.36	-3.42	NULL	69.14	66.77	0.04	2.93	111
Satrix JSE Global Eq ETF	STXJGE	70.82	69.60	72.90	72.43	2.27	0.13	50.66	59.05	0.09	6.73	139
Satrix MSCI ACWI ETF	STXACW	76.27	74.99	76.98	75.29	-1.28	NULL	53.40	143.06	1.28	97.12	146
Satrix MSCI China ETF	STXCHN	36.54	35.42	40.00	38.52	5.42	NULL	838.83	884.29	1.55	57.65	1266
Satrix MSCI EM ESG ETF	STXEME	50.73	48.80	51.47	50.57	-0.32	NULL	137.20	136.76	0.03	1.70	69
Satrix MSCI EMG Markets	STXEMG	61.07	59.00	63.80	60.98	-0.15	NULL	2245.71	2291.18	1.43	87.71	969
Satrix MSCI India ETF	STXNDA	86.12	85.02	88.76	87.47	1.57	NULL	576.29	637.80	0.79	68.52	902
Satrix MSCI World ESG ETF	STXESG	78.23	75.67	80.68	77.00	-1.57	NULL	258.80	254.73	0.07	5.69	167
Satrix MSCI World Feeder	STXWDM	90.86	89.01	94.25	89.65	-1.33	NULL	12923.53	13056.24	5.07	459.31	2839
Satrix Nasdaq 100 Prtf	STXNDQ	192.83	184.00	196.91	189.51	-1.72	NULL	5345.42	5367.10	1.00	191.66	2357
Satrix S&P 500 Feeder	STX500	102.29	100.00	106.00	100.54	-1.71	NULL	5950.62	6170.55	3.28	333.27	2784
Satrix Smart City Inf ETF	STXCTY	68.29	65.94	69.30	67.24	-1.54	NULL	26.98	26.56	0.01	0.60	41
Invest Global REIT ETF	ETFGRE	21.82	20.50	22.50	21.17	-2.98	0.10	84.90	94.86	0.56	12.12	330
Invest MSCI EM Asia ETF	ETFEMA	31.22	30.14	31.49	30.98	-0.77	NULL	116.87	115.97	0.18	5.44	181
Invest MSCI World ETF	ETFWLD	90.73	88.51	91.68	89.55	-1.30	NULL	491.44	491.49	0.09	8.44	286
Invest MSCI world SRI ETF	ETFSRI	165.76	159.61	165.99	161.88	-2.34	0.28	29.07	30.42	0.00	0.55	51
Invest S&P500 Index ETF	ETF500	507.52	494.09	517.59	500.52	-1.38	NULL	433.61	435.04	0.03	13.59	444
Invest S&P500 IT ETF	ETF5IT	25.65	24.20	26.30	25.08	-2.22	NULL	1071.42	1073.87	1.78	45.14	1199
SFN ACTIVELY MANAGED ETF	SYFANG	13.13	12.55	13.64	13.10	-0.23	NULL	863.93	1004.68	2.47	32.62	317
Sygnia Itrix 4Ird Rev Gb	SYG4IR	46.41	44.03	46.99	45.07	-2.89	NULL	2182.36	1861.67	1.43	64.73	908
Sygnia Itrix Eurostoxx50	SYGEU	101.68	99.19	106.22	100.36	-1.30	NULL	3463.58	3418.61	0.70	70.72	1076
Sygnia Itrix FTSE100	SYGUK	186.56	184.33	194.52	192.92	3.41	NULL	1081.49	1118.36	0.17	32.05	294
Sygnia Itrix Gbl Pro ETF	SYGP	47.08	45.05	47.62	45.59	-3.16	NULL	744.16	720.61	0.08	3.78	154
Sygnia Itrix MSCI EM 50	SYGEMF	17.21	16.62	17.49	17.27	0.35	NULL	294.58	295.61	0.37	6.35	109
Sygnia Itrix MSCI Japan	SYGJP	21.04	20.15	21.28	20.43	-2.90	NULL	982.92	991.19	2.80	58.32	621
Sygnia Itrix MSCI US	SYGUS	91.39	89.00	92.47	90.05	-1.47	NULL	7797.76	7683.43	1.15	104.57	1194
Sygnia Itrix MSCI World	SYGWD	64.81	63.15	66.21	64.11	-1.08	NULL	18001.08	17764.22	3.73	239.64	2315
Sygnia Itrix New China Sectors ETF	SYGCN	27.77	26.56	28.85	28.44	2.41	NULL	136.85	140.16	0.38	10.69	153
Sygnia Itrix S&P 500 ETF	SYG500	98.73	96.42	99.85	97.28	-1.47	NULL	5525.46	5561.05	1.17	114.93	1037

MONTHLY DETAILED ETF INFORMATION

GLOBAL EQUITY

ETF (SORTED ALPHABETICALLY)	START	Prices in Rands			END	1M%	DISTRIBUTION	Value in Mn's		VOLUME	VALUE	TRADES
		LOW	HIGH	END				MCAP OPE	MCAP CLOSE			
Sygnia Itrix New China Sectors ETF	SYGCN	27.77	26.56	28.85	28.44	2.41	NULL	136.85	140.16	0.38	10.69	153
Sygnia Itrix S&P 500 ETF	SYG500	98.73	96.42	99.85	97.28	-1.47	NULL	5525.46	5561.05	1.17	114.93	1037

GLOBAL EQUITY

ETF (SORTED ALPHABETICALLY)	START	Prices in Rands			END	1M%	DISTRIBUTION	Value in Mn's		VOLUME	VALUE	TRADES
		LOW	HIGH	END				MCAP OPE	MCAP CLOSE			
Sygnia Itrix MSCI EM 50	SYGEMF	17.21	16.62	17.49	17.27	0.35	NULL	294.58	295.61	0.37	6.35	109
Sygnia Itrix MSCI Japan	SYGJP	21.04	20.15	21.28	20.43	-2.90	NULL	982.92	991.19	2.80	58.32	621
Sygnia Itrix MSCI US	SYGUS	91.39	89.00	92.47	90.05	-1.47	NULL	7797.76	7683.43	1.15	104.57	1194
Sygnia Itrix MSCI World	SYGWD	64.81	63.15	66.21	64.11	-1.08	NULL	18001.08	17764.22	3.73	239.64	2315
Sygnia Itrix New China Sectors ETF	SYGCN	27.77	26.56	28.85	28.44	2.41	NULL	136.85	140.16	0.38	10.69	153
Sygnia Itrix S&P 500 ETF	SYG500	98.73	96.42	99.85	97.28	-1.47	NULL	5525.46	5561.05	1.17	114.93	1037

SA EQUITY | OTHER

ETF (SORTED ALPHABETICALLY)	START	Prices in Rands			END	1M%	DISTRIBUTION	Value in Mn's		VOLUME	VALUE	TRADES
		LOW	HIGH	END				MCAP OPE	MCAP CLOSE			
10X DivTrax	DIVTRX	22.03	21.83	23.04	22.89	3.90	0.30	120.40	111.37	0.07	1.67	194
10X Next 40	WNXT40	10.24	10.02	10.64	10.33	0.88	0.08	303.26	326.58	3.05	31.45	303
10X S&P Prop Income	CSPROP	11.18	10.81	11.36	11.22	0.36	NULL	440.15	421.53	0.75	8.24	303
10X SciBeta M-FI	SMART	50.64	49.03	52.11	51.97	2.63	0.32	104.24	106.97	0.03	1.61	80
10X Top 50	CTOP50	29.86	29.31	31.52	31.23	4.59	0.31	1671.73	1748.43	0.37	11.28	229
10X Wealth Top 20	WTOP20	9.49	9.21	9.94	9.88	4.11	0.13	384.35	429.79	5.79	56.10	231
FNB MIDCAP ETF	FNB MID	7.67	7.46	7.96	7.78	1.43	0.04	507.39	512.33	1.77	13.77	330
Satrix Capped ALL Share	STXCAP	37.38	36.50	38.85	38.69	3.50	NULL	567.41	347.41	8.00	299.69	361
Satrix DIVI Plus Portfolio	STXDIV	2.46	2.38	2.57	2.48	0.81	0.03	1604.88	1608.01	14.74	36.37	901
Satrix FINI Portfolio	STXFIN	16.42	15.72	17.05	16.98	3.41	0.09	1174.64	1211.30	1.82	29.62	643
Satrix I & D ETF	STXID	28.15	27.50	29.48	28.68	1.88	0.27	15.23	15.51	0.01	0.34	26
Satrix INDI Portfolio	STXIND	102.29	94.65	104.84	104.31	1.97	0.55	2105.99	2121.50	0.28	28.05	479
Satrix Low Vol ETF	STXLVL	10.75	10.38	11.03	10.96	1.95	0.07	17.10	17.44	0.07	0.76	36
Satrix Momentum Portfolio	STXMMT	12.29	11.99	12.65	12.59	2.44	0.10	115.68	112.21	0.14	1.67	93
Satrix Property Portfolio	STXPRO	9.44	9.08	9.68	9.45	0.11	0.03	327.30	321.98	1.07	9.94	354
Satrix Quality SA ETF	STXQUA	7.89	7.66	8.15	8.12	2.92	0.06	126.48	150.47	3.08	24.80	147
Satrix RESI Portfolio	STXRES	61.66	61.08	69.82	64.89	5.24	0.23	868.66	1050.44	5.12	329.42	1487
Satrix Value Equity ETF	STXVEQ	13.89	13.75	14.43	14.33	3.17	0.02	73.67	90.33	1.23	17.43	72
1Invest SA Property ETF	ETFSAP	33.54	32.00	34.50	33.57	0.09	NULL	746.87	750.56	0.13	4.19	286

SA EQUITY | TOP 40

ETF (SORTED ALPHABETICALLY)	START	Prices in Rands			END	1M%	DISTRIBUTION	Value in Mn's		VOLUME	VALUE	TRADES
		LOW	HIGH	END				MCAP OPE	MCAP CLOSE			
FNB TOP 40 ETF	FNBT40	68.74	67.72	71.47	71.16	3.52	0.39	2574.43	2657.95	0.93	65.35	483
Satrix 40 Portfolio	STX40	68.61	67.51	71.50	71.10	3.63	0.37	13042.21	13394.67	4.81	335.24	2685
Satrix RAFI 40 ETF	STXRAF	22.13	21.60	23.88	23.14	4.56	0.12	1156.90	1205.07	0.60	13.46	280
Satrix Shariah T40 ETF	STXSHA	3.62	3.58	3.89	3.77	4.14	0.01	48.36	50.37	0.75	2.81	156
Satrix SWIX Top 40 Portfolio	STXSWX	12.81	12.57	13.36	13.24	3.36	0.07	403.75	414.65	0.29	3.70	211
1Invest SWIX 40 ETF	ETFSWX	12.82	12.52	13.30	13.20	2.96	0.08	1551.57	1597.56	0.05	0.60	92
1Invest TOP 40 ETF	ETFT40	68.83	66.00	71.24	70.86	2.95	0.49	607.45	628.48	0.54	36.99	605
Sygnia Itrix Top 40 ETF	SYGT40	68.58	67.43	71.66	71.32	4.00	NULL	583.80	571.46	0.13	9.03	104

The information, data and compilations, or any part thereof, which make up the JSE ETF Factsheet ("Data") is being provided to you strictly for informational purposes. JSE Limited ("JSE") reserves the right to withdraw, modify, or replace the Data (or any part thereof) at any time.

To the extent allowed by law, JSE does not (expressly, tacitly or impliedly) guarantee or warrant the availability, sequence, accuracy, completeness, reliability or any other aspect of any of the Data or that the Data contained therein is up to date. To the extent allowed by law, neither the JSE nor any of its directors, officers, employees, contractors, agents or representatives are liable to any way to the reader/user or to any other natural or juristic person (Person) for any loss or damage as a result of any errors contained in the specification, for any loss arising from use of, or reliance on the Data in this JSE ETF Factsheet or any actions taken or not taken by or behalf of any Person in reliance on any Data in this JSE ETF Factsheet. You may not copy, reproduce, redistribute, alter or transmit any Data without the prior written consent of the JSE.

The Johannesburg Stock Exchange prides itself on a 130 year history as an effective, reputable trading platform. We are currently ranked the 19th largest stock exchange in the world based on market capitalization, and the largest exchange on the African continent. The JSE offers secure and efficient primary and secondary capital markets across a diverse range of asset classes which include equities, commodities, currencies, interest rates and bonds. We are the exchange of choice for local and international investors looking for investment opportunities across leading capital markets in South Africa and the broader African continent.

The JSE's achievements escalate through to this year's 20th anniversary of the first ETF listing on the local Exchange Traded Fund (ETF) market. Today, the ETF market capitalization is close to R90bn with over 70 listed ETFs on the JSE Main Board.

Our Primary Markets Team is a key access point for existing and/or potential issuers to gain exposure to local and international investor capital. The team focuses on listing companies and instruments on the Equity (Main Board and AltX) or Debt Market and aids in product development.

Contact the team: listingontheJSE@jse.co.za

Our Information Services Team works to deliver world class market data to our clients. This data can often be customized on request providing our clients with the exact Intel required to make business and portfolios decisions.

We offer live, delayed, end of day, reference and historical market data for:

- Equities
- Indices
- Equity Derivatives
- Commodity Derivatives
- Commodity Derivatives
- Currency Derivatives
- Interest Rate Derivatives
- Bonds
- Market Announcements (SENS)

We have nearly 170 indices across a wide variety of methodologies and investment criteria.

Our partnership with FTSE Russell includes:

- FTSE/JSE All Share
- FTSE/JSE Top 40
- FTSE/JSE ESG
- FTSE/JSE Factor Indices
- FTSE/JSE Shariah
- FTSE/JSE RAFI and many more

We develop customised indices to suit your needs.

- Our other service offerings include:
- Bond ETP data
- Tick data
- Corporate Actions
- Business Intelligence Reports
- Valuations

Contact the team: mdclients@jse.co.za