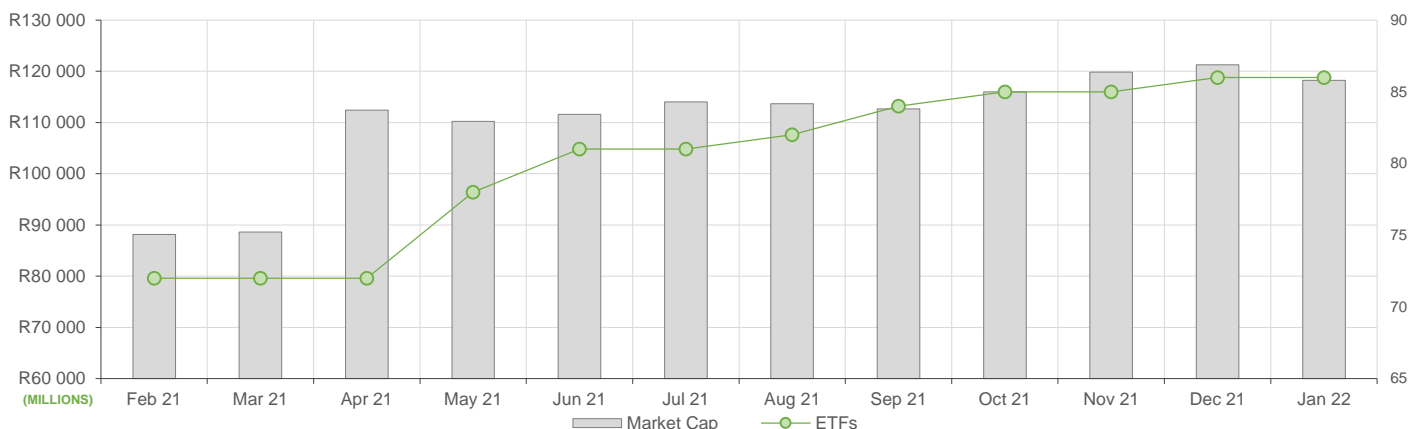


NEW LISTINGS AND DELISTINGS

ETF	CODE	ISSUER	EVENT	DATE
-----	------	--------	-------	------

MARKET CAPITALISATION ANALYSIS | Total Industry



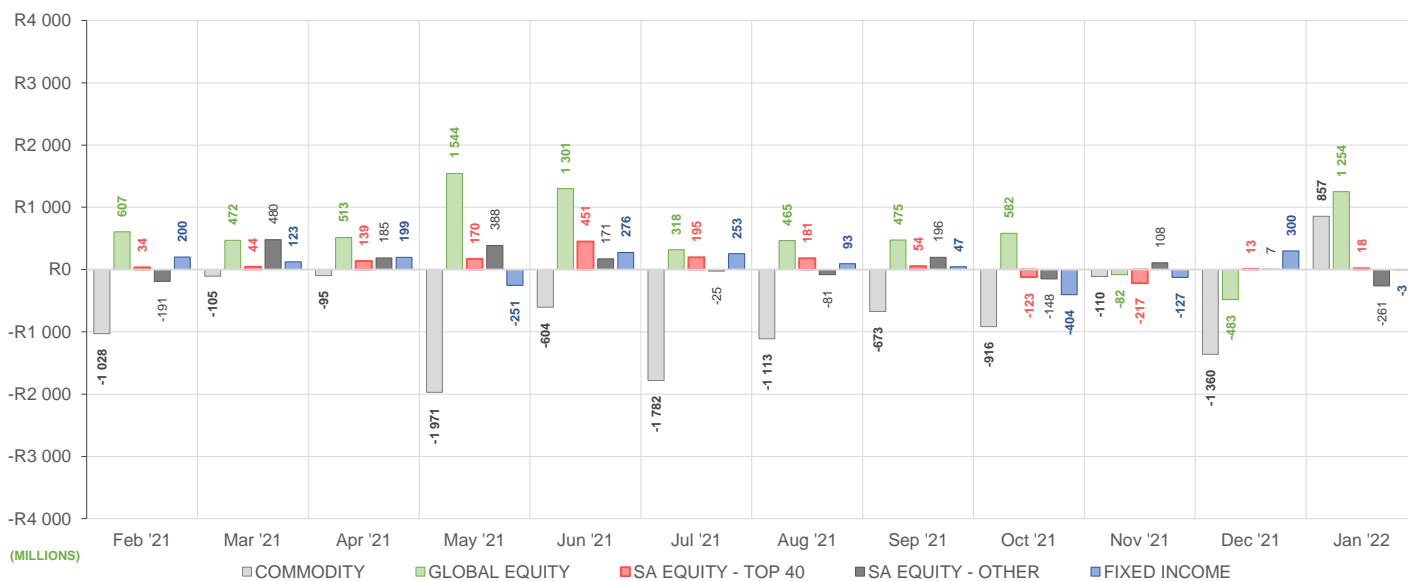
NET DAILY EXCHANGE CREATIONS AND REDEMPTIONS | Top & Bottom Five ETFs

TOP 5 INSTRUMENTS	CODE	TOTAL DAILY CREATIONS	TOTAL DAILY REDEMPTIONS	NET MONTHLY CREATIONS
1InvestPlatinum ETF	ETFPLT	R857 097 250	---	R857 097 250
Satrix MSCI World Feeder	STXWDM	R533 996 500	---	R533 996 500
Satrix S&P 500 Feeder	STX500	R182 021 000	---	R182 021 000
Sygnia Itrix S&P 500 ETF	SYG500	R96 929 000	---	R96 929 000
NEWFUNDS GOVI ETF	NFGOVI	R79 020 000	---	R79 020 000

BOTTOM 5 INSTRUMENTS	CODE	TOTAL DAILY CREATIONS	TOTAL DAILY REDEMPTIONS	NET MONTHLY CREATIONS
New Gold Issuer Ltd	GLD	R26 264 000	-R78 264 000	-R52 000 000
Satrix FINI Portfolio	STXFIN	R6 070 000	-R62 810 000	-R56 740 000
Satrix SA Bond Portfolio	STXGOV	R241 430 000	-R330 740 000	-R89 310 000
CORESHARESTOP50	CTOP50	R7 478 750	-R106 411 037	-R98 932 287
Satrix INDI Portfolio	STXIND	---	-R186 182 250	-R186 182 250

Considers the daily update to total number of issued units listed on the exchange over the calendar month, with Creations representing a day-on-day increase in total number of listed units, and Redemptions representing a decrease. An average day-on-day price is used to estimate the ZAR value of each net daily movement. No secondary market transactions are considered.

NET MONTHLY EXCHANGE CREATIONS AND REDEMPTIONS



MONTHLY ETF PERFORMANCE | Top & Bottom Five ETFs

TOP 5 INSTRUMENTS	CODE	TOTAL RETURN	VOLATILITY	MAX DRAW DOWN
1InvestPalladium ETF	ETFPD	22,01%	10,18%	-3,84%
NewGold Palladium ETF	NGPLD	21,69%	10,22%	-4,07%
1InvestRhodium ETF	ETFRHO	18,27%	18,46%	-13,37%
Satrix SA Bond Portfolio	STXGOV	7,40%	5,73%	-1,64%
Satrix I & D ETF	STXID	7,38%	5,12%	-4,88%

BOTTOM 5 INSTRUMENTS	CODE	TOTAL RETURN	VOLATILITY	MAX DRAW DOWN
Sygnia Itrix SOL H150	SYGH	-10,74%	5,12%	-13,10%
1Invest S&P500 IT ETF	ETF5IT	-11,71%	9,31%	-18,49%
AMI Big50 ex-SA ETF	AMIB50	-11,98%	32,64%	-20,00%
Satrix Nasdaq 100 Prtf	STXNDQ	-13,82%	8,20%	-18,48%
Sygnia Itrix 4Ind Rev Gb	SYG4IR	-17,35%	9,39%	-21,76%

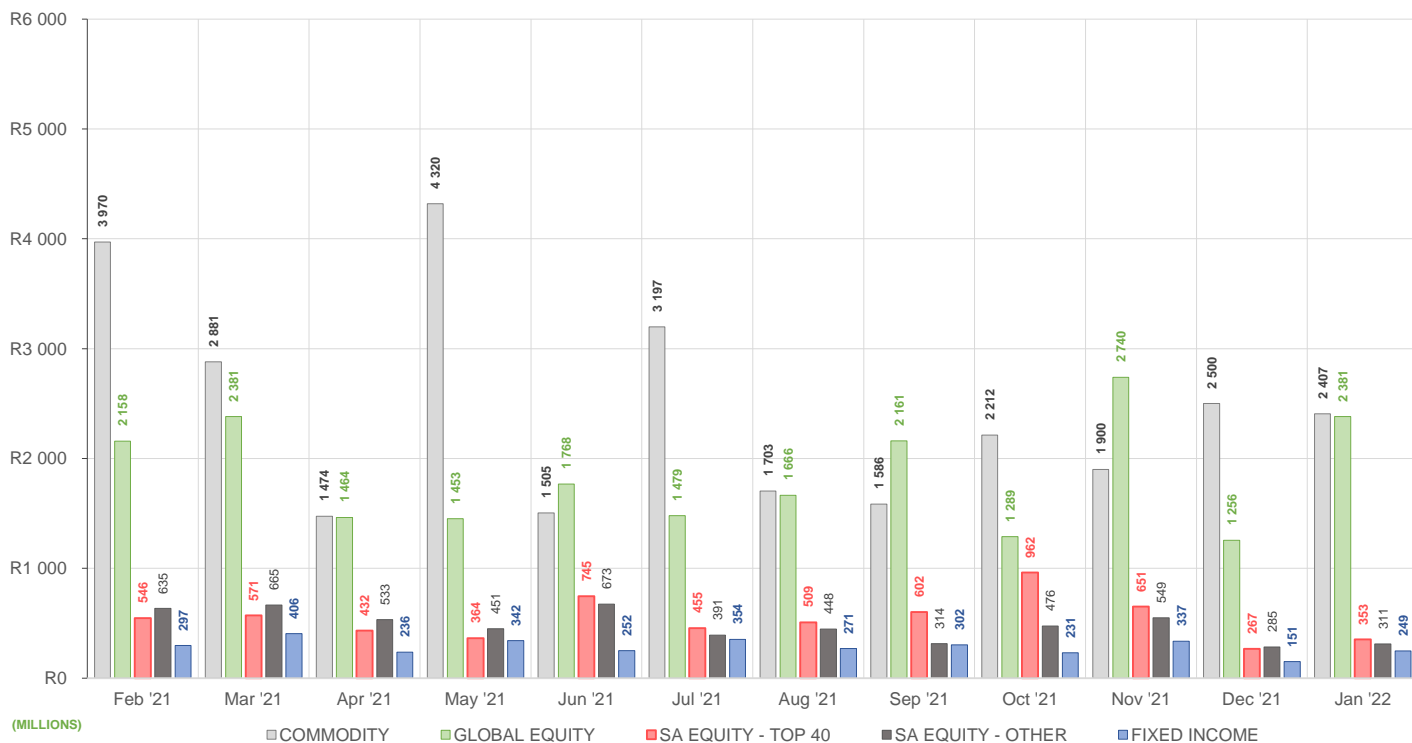
ROLLING 12-MONTH ETF PERFORMANCE | Top & Bottom Five ETFs

TOP 5 INSTRUMENTS	CODE	TOTAL RETURN	VOLATILITY	MAX DRAW DOWN
NF Equity Value ETF	NFEVAL	47,09%	14,82%	-6,07%
CoreShares PrefTrax	PREFTX	45,68%	12,48%	-9,89%
CoreShares SAProp	CSPROP	45,05%	17,00%	-8,29%
Satrix RAFI 40 Portfolio	STXRAF	44,22%	16,81%	-7,00%
Satrix Property Portfolio	STXPRO	40,10%	15,97%	-9,22%

BOTTOM 5 INSTRUMENTS	CODE	TOTAL RETURN	VOLATILITY	MAX DRAW DOWN
Ashburton World GovB ETF	ASHWGB	-6,16%	13,97%	-14,00%
1InvestRhodium ETF	ETFRHO	-14,47%	63,44%	-64,94%
AMI Big50 ex-SA ETF	AMIB50	-16,12%	83,29%	-40,59%
Sygnia Itrix 4Ind Rev Gb	SYG4IR	-21,13%	30,11%	-32,38%
Satrix MSCI China ETF	STXCHN	-28,12%	24,47%	-35,75%

Total Return is the monthly/annual performance incorporating price performance and immediate reinvestment of dividends. Volatility is the based on daily price standard deviation and presented as a monthly/annual volatility. Maximum draw down measures the worst case return outcome for an investor over the course of the period – based on purchase and subsequent sale timing that results in the largest loss of capital.

MONTHLY VALUE TRADED FOR ALL ETFs



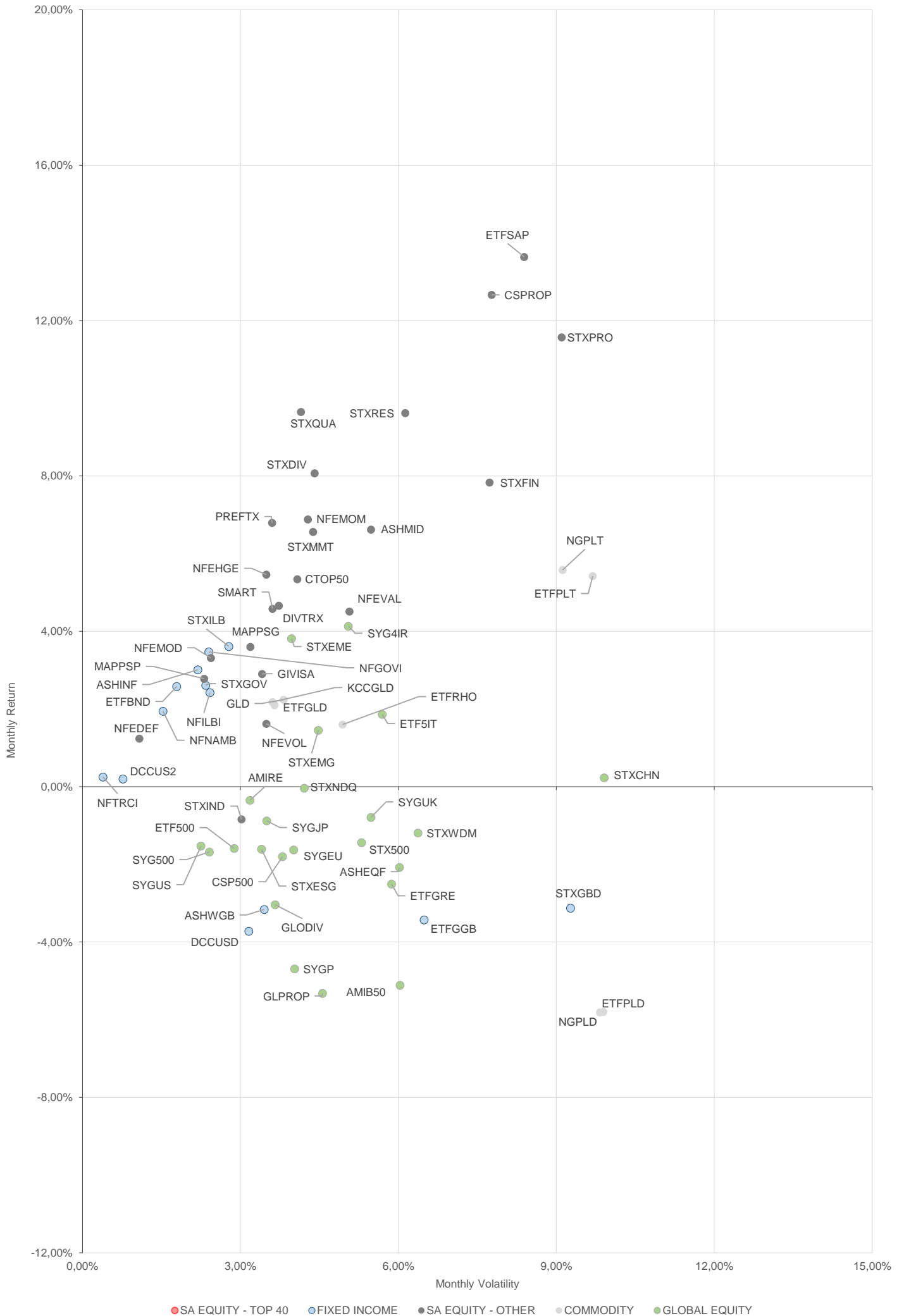
MONTHLY ETF TRADE STATISTICS | Top & Bottom Five Funds

TOP 5 INSTRUMENTS	CODE	VOLUME	VALUE	TRADES	LIQUIDITY
1InvestPlatinum ETF	ETFPD	9 996 046	R1 494 251 367,00	125	56,65%
Satrix MSCI World Feeder	STXWDM	9 935 041	R668 971 396,20	2 641	10,55%
Sygnia Itrix MSCI World	SYGWD	7 065 243	R339 660 881,70	1 745	2,91%
Satrix FINI Portfolio	STXFIN	5 889 105	R90 799 404,52	826	9,48%
Satrix DIVI Plus Portfolio	STXDIV	7 961 500	R25 125 874,07	1 071	1,22%

BOTTOM 5 INSTRUMENTS	CODE	VOLUME	VALUE	TRADES	LIQUIDITY
1InvestGold ETF	ETFGD	12 447	R3 418 072,11	190	0,68%
KR Custodial Certificate	KCCGLD	39	R1 122 023,00	14	0,12%
1Invest G7 Govt Bond ETF	ETFGGB	11 219	R955 025,02	94	2,32%
Newfunds MAPPS Protect	MAPPS	7 968	R362 525,95	39	0,72%
NF VM Defensive EquityETF	NFEDEF	5 308	R57 624,79	16	0,10%

Volume, Value and Trades are the aggregate counts of all trade activity in the ETF for the month on the JSE equity market. This includes central order book and reported trades, but excludes creations and redemptions. Liquidity is the total volume traded expressed as a percentage of the number of listed instruments for the ETF as at the end of the month.

TOTAL RETURN VERSUS VOLATILITY



● SA EQUITY - TOP 40 ● FIXED INCOME ● SA EQUITY - OTHER ● COMMODITY ● GLOBAL EQUITY

MONTHLY DETAILED ETF INFORMATION

COMMODITIES

		Prices in Rands				In Rands		Values in Mn's		in 000's in Mn's		
INVEST ETF ISSUER (RF) LIMITED	CODE	START	LOW	HIGH	END	1M %	DISTRIBUTION	MCAP OPEN	MCAP CLOSE	VOL	VALUE	TRADES
1InvestGold ETF	ETFGLD	280,90	269,51	283,07	271,67	-3,29	--	516,86	499,87	0,01	3,37	182,00
1InvestPalladium ETF	ETFPLD	291,66	276,53	364,99	364,69	25,04	--	919,91	1150,25	0,01	4,26	131,00
1InvestPlatinum ETF	ETFPLT	147,52	142,21	155,31	153,83	4,28	--	1784,25	2714,33	10,00	1,494,25	122,00
1InvestRhodium ETF	ETFRHO	2217,50	2055,05	2737,50	2482,99	11,97	--	401,16	456,63	0,01	26,30	356,00

FIRSTSTRAND BANK LIMITED	CODE	START	LOW	HIGH	END	1M %	DISTRIBUTION	MCAP OPEN	MCAP CLOSE	VOL	VALUE	TRADES
KR Custodial Certificate	KCCGLD	29512,50	28468,00	28961,00	28533,50	-3,32	--	930,09	899,23	0,00	1,12	14,00

NEWGOLD ISSUER (RF) LIMITED	CODE	START	LOW	HIGH	END	1M %	DISTRIBUTION	MCAP OPEN	MCAP CLOSE	VOL	VALUE	TRADES
New Gold Issuer Ltd	GLD	268,83	257,41	272,56	260,05	-3,27	--	16285,17	15701,28	2,59	679,57	2290,00
New Gold Platinum ETF	NGPLT	146,24	141,77	155,10	152,32	4,16	--	7019,52	7357,06	0,90	132,89	356,00
NewGold Palladium ETF	NGPLD	291,62	278,00	359,11	363,66	24,70	--	357,15	445,37	0,17	51,40	140,00

SA & GLOBAL FIXED INCOME

		Prices in Rands				In Rands		Values in Mn's		in 000's in Mn's		
STANLIB COLLECTIVE INVESTMEN' CODE	CODE	START	LOW	HIGH	END	1M %	DISTRIBUTION	MCAP OPEN	MCAP CLOSE	VOL	VALUE	TRADES
1Invest G7 Govt Bond ETF	ETFGGB	88,51	83,00	93,43	84,90	-4,08	--	42,88	41,13	0,01	0,91	71,00
1Invest SA Bond ETF	ETFBND	85,80	83,88	87,07	86,55	0,87	1,68	60,06	60,59	0,21	17,47	84,00

ASHBURTON MANAGEMENT COMP CODE	CODE	START	LOW	HIGH	END	1M %	DISTRIBUTION	MCAP OPEN	MCAP CLOSE	VOL	VALUE	TRADES
Ashburton World GovB ETF	ASHWGB	7,80	7,28	8,00	7,46	-4,36	--	133,65	135,28	1,57	11,78	205,00
Ashburton Inflation ETF	ASHINF	22,41	21,62	22,72	22,00	-1,83	0,16	415,37	407,77	0,11	2,50	124,00

FIRSTSTRAND BANK LIMITED	CODE	START	LOW	HIGH	END	1M %	DISTRIBUTION	MCAP OPEN	MCAP CLOSE	VOL	VALUE	TRADES
2YR Dollar Custodial Cert	DCCUS2	1582,95	1500,00	1583,30	1529,90	-3,35	--	239,03	231,01	0,02	30,96	14,00
Dollar Custodial Cert	DCCUSD	1635,85	1557,60	1643,30	1573,05	-3,84	--	220,84	212,36	0,02	30,74	10,00

NEWFUNDS COLLECTIVE INVESTM CODE	CODE	START	LOW	HIGH	END	1M %	DISTRIBUTION	MCAP OPEN	MCAP CLOSE	VOL	VALUE	TRADES
NEWFUNDS TRACI 3-M ETF	NFTRCI	28,65	28,56	28,83	28,73	0,28	0,25	238,27	238,94	0,29	8,31	138,00
NEWFUNDS GOVI ETF	NFGOVI	78,81	78,01	82,17	79,74	1,18	0,63	3106,62	3223,02	1,69	133,78	1135,00
NEWFUNDS ILBI ETF	NFILBI	80,86	79,05	81,37	79,91	-1,17	0,20	113,20	111,87	0,02	1,46	57,00
NFNAM 10 Bonds	NFNAMB	16,59	16,38	16,68	16,64	0,30	0,37	338,97	339,99	0,01	0,18	21,00

Satrix Managers (RF) (Pty) Ltd	CODE	START	LOW	HIGH	END	1M %	DISTRIBUTION	MCAP OPEN	MCAP CLOSE	VOL	VALUE	TRADES
Satrix ILBI Portfolio	STXILB	6,94	6,50	7,00	6,80	-2,02	0,10	319,35	312,91	1,05	7,20	166,00
Satrix Global Bond ETF	STXGBD	41,18	38,43	41,90	39,22	-4,76	--	45,35	43,19	0,05	2,15	80,00
Satrix SA Bond Portfolio	STXGOV	8,47	8,31	8,95	8,60	1,53	0,48	652,03	567,43	33,03	283,60	382,00

The information, data and compilations, or any part thereof, which make up the JSE ETF Factsheet ("Data") is being provided to you strictly for informational purposes. JSE Limited ("JSE") reserves the right to withdraw, modify, or replace the Data (or any part thereof) at any time.

To the extent allowed by law, JSE does not (expressly, tacitly or impliedly) guarantee or warrant the availability, sequence, accuracy, completeness, reliability or any other aspect of any of the Data or that the Data contained therein is up to date. To the extent allowed by law, neither the JSE nor any of its directors, officers, employees, contractors, agents or representatives are liable to any way to the reader/user or to any other natural or juristic person (Person) for any loss or damage as a result of any errors contained in the specification, for any loss arising from use of, or reliance on the Data in this JSE ETF Factsheet or any actions taken or not taken by or behalf of any Person in reliance on any Data in this JSE ETF Factsheet. You may not copy, reproduce, redistribute, alter or transmit any Data without the prior written consent of the JSE.

The Johannesburg Stock Exchange prides itself on a 130 year history as an effective, reputable trading platform. We are currently ranked the 19th largest stock exchange in the world based on market capitalization, and the largest exchange on the African continent. The JSE offers secure and efficient primary and secondary capital markets across a diverse range of asset classes which include equities, commodities, currencies, interest rates and bonds. We are the exchange of choice for local and international investors looking for investment opportunities across leading capital markets in South Africa and the broader African continent.

The JSE's achievements escalate through to this year's 20th anniversary of the first ETF listing on the local Exchange Traded Fund (ETF) market. Today, the ETF market capitalization is close to R90bn with over 70 listed ETFs on the JSE Main Board.

Our Primary Markets Team is a key access point for existing and/or potential issuers to gain exposure to local and international investor capital. The team focuses on listing companies and instruments on the Equity (Main Board and AltX) or Debt Market and aids in product development.

Contact the team: listingontheJSE@jse.co.za

Our Information Services Team works to deliver world class market data to our clients. This data can often be customized on request providing our clients with the exact Intel required to make business and portfolio decisions.

We offer live, delayed, end of day, reference and historical market data for:

- Equities
- Indices
- Equity Derivatives
- Commodity Derivatives
- Commodity Derivatives
- Currency Derivatives
- Interest Rate Derivatives
- Bonds
- Market Announcements (SENS)

We have nearly 170 indices across a wide variety of methodologies and investment criteria.

Our partnership with FTSE Russell includes:

- FTSE/JSE All Share
- FTSE/JSE Top 40
- FTSE/JSE ESG
- FTSE/JSE Factor Indices
- FTSE/JSE Shariah
- FTSE/JSE RAFI and many more

We develop customised indices to suit your needs.

- Our other service offerings include:
- Bond ETP data
- Tick data
- Corporate Actions
- Business Intelligence Reports
- Valuations

Contact the team: mdclients@jse.co.za