

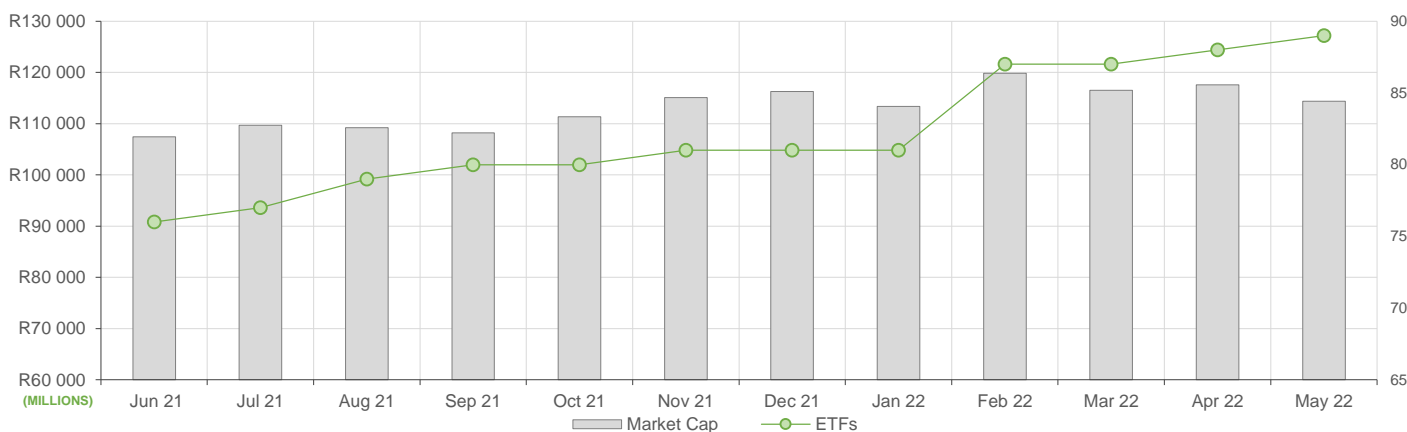
May showed decreased ETF activity compared to April, here is what we have seen:

- ETF Market Capitalization showed a decrease month-on-month to roughly R114bn. ETF unit creations were also lower compared to the previous month, reflecting a marginal increase in SA Top 40 ETF creations and local property ETF creations. Large unit redemptions were seen in commodity ETFs
- Month-on-month ETF value traded was higher compared to April's activity, reflecting roughly R4.8bn in total value traded during the month.
- Month-on-Month ETF returns showed negative performances across global equity ETFs.

NEW LISTINGS AND DELISTINGS

| ETF | CODE | ISSUER | EVENT | DATE |
|---------------------------|--------|--------------------------------|---------|------|
| Satrix Healthcare Inn ETF | STXHLT | Satrix Managers (RF) (Pty) Ltd | Listing | -- |

MARKET CAPITALISATION ANALYSIS | Total Industry



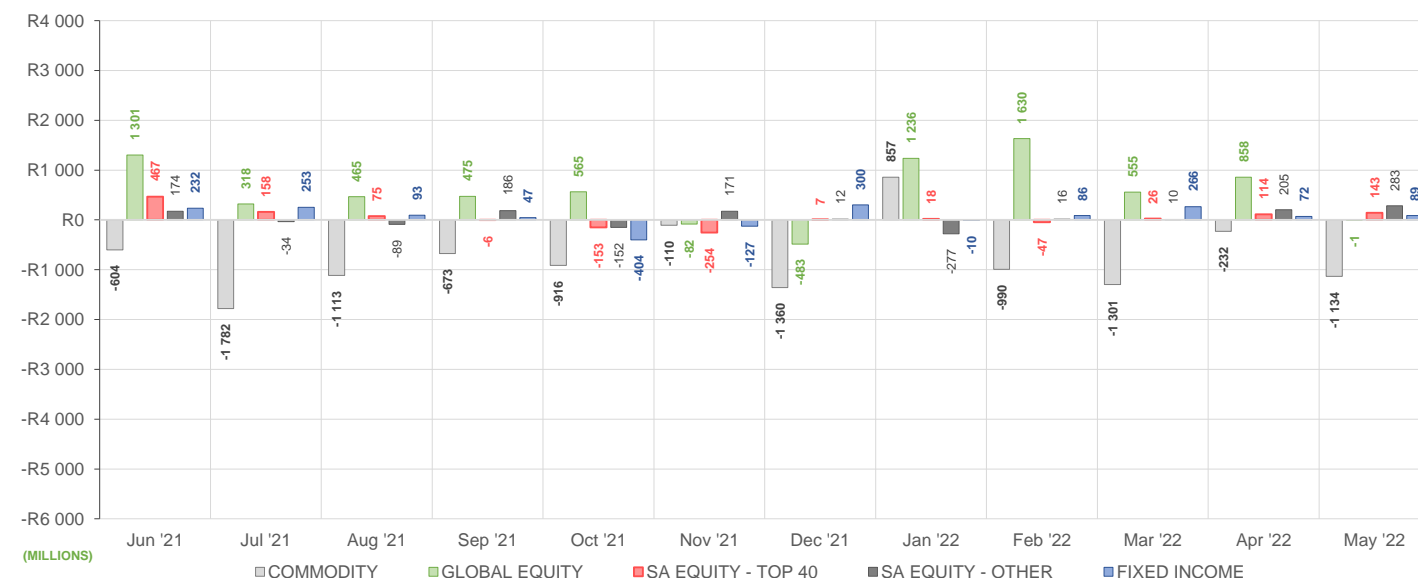
NET DAILY EXCHANGE CREATIONS AND REDEMPTIONS | Top & Bottom Five ETFs

| TOP 5 INSTRUMENTS | CODE | TOTAL DAILY CREATIONS | TOTAL DAILY REDEMPTIONS | NET MONTHLY CREATIONS |
|---------------------------|---------|-----------------------|-------------------------|-----------------------|
| 1invest SA Property ETF | ETFSAPE | R282 155 500 | --- | R282 155 500 |
| Satrix 40 Portfolio | STX40 | R125 673 500 | --- | R125 673 500 |
| Satrix Property Portfolio | STXPRO | R61 594 000 | -R2 800 500 | R58 793 500 |
| Satrix ILBI Portfolio | STXILB | R50 100 000 | --- | R50 100 000 |
| Satrix Nasdaq 100 Prtf | STXNDQ | R44 270 000 | --- | R44 270 000 |

| BOTTOM 5 INSTRUMENTS | CODE | TOTAL DAILY CREATIONS | TOTAL DAILY REDEMPTIONS | NET MONTHLY CREATIONS |
|-----------------------|--------|-----------------------|-------------------------|-----------------------|
| Satrix RESI Portfolio | STXRES | --- | -R80 341 500 | -R80 341 500 |
| 1investPalladium ETF | ETFPLD | --- | -R130 590 000 | -R130 590 000 |
| 1investPlatinum ETF | ETFPLT | R15 349 000 | -R168 026 200 | -R152 677 200 |
| New Gold Platinum ETF | NGPLT | --- | -R177 130 000 | -R177 130 000 |
| New Gold Issuer Ltd | GLD | --- | -R603 231 500 | -R603 231 500 |

Considers the daily update to total number of issued units listed on the exchange over the calendar month, with Creations representing a day-on-day increase in total number of listed units, and Redemptions representing a decrease. An average day-on-day price is used to estimate the ZAR value of each net daily movement. No secondary market transactions are considered.

NET MONTHLY EXCHANGE CREATIONS AND REDEMPTIONS



MONTHLY ETF PERFORMANCE | Top & Bottom Five ETFs

| TOP 5 INSTRUMENTS | CODE | TOTAL RETURN | VOLATILITY | MAX DRAW DOWN |
|-----------------------|--------|--------------|------------|---------------|
| Satrix FINI Portfolio | STXFIN | 3.67% | 7.00% | -4.99% |
| NFNAM 10 Bonds | NFNAMB | 3.48% | 5.07% | -1.32% |
| NEWFUNDS ILBI ETF | NFILBI | 2.11% | 1.68% | -1.52% |
| NF Equity Value ETF | NFEVAL | 1.46% | 12.80% | -10.59% |
| 1invest SWIX 40 ETF | ETFSWX | 1.26% | 7.12% | -6.08% |

| BOTTOM 5 INSTRUMENTS | CODE | TOTAL RETURN | VOLATILITY | MAX DRAW DOWN |
|--------------------------------------|---------|--------------|------------|---------------|
| AMI Big50 ex-SA ETF | AMIB50 | -9.79% | 43.61% | -34.73% |
| NewFunds Reitway Global Property ETF | NEWPRP | -9.83% | 8.01% | -7.75% |
| NewGold Palladium ETF | NGPLD | -12.84% | 11.55% | -13.35% |
| 1investPalladium ETF | ETFPALD | -13.28% | 11.19% | -12.78% |
| 1investRhodium ETF | ETFRHO | -15.85% | 10.48% | -15.77% |

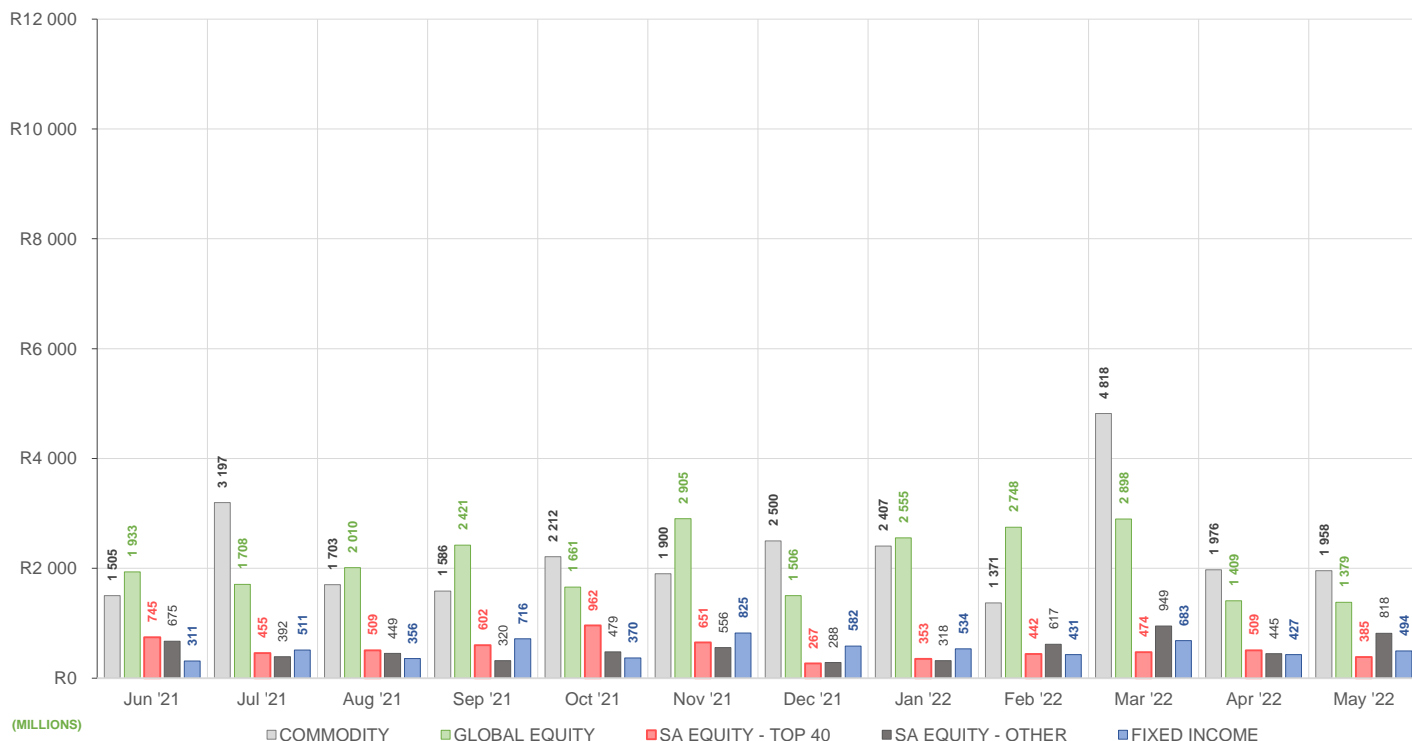
ROLLING 12-MONTH ETF PERFORMANCE | Top & Bottom Five ETFs

| TOP 5 INSTRUMENTS | CODE | TOTAL RETURN | VOLATILITY | MAX DRAW DOWN |
|----------------------------|--------|--------------|------------|---------------|
| CoreShares PrefTrax | PREFTX | 40.28% | 20.05% | -11.82% |
| Satrix FINI Portfolio | STXFIN | 30.72% | 21.00% | -13.56% |
| Satrix DIVI Plus Portfolio | STXDIV | 30.33% | 18.87% | -13.15% |
| Satrix RAFI 40 Portfolio | STXRAF | 29.65% | 18.10% | -10.47% |
| NF Equity Value ETF | NFEVAL | 27.35% | 19.47% | -14.82% |

| BOTTOM 5 INSTRUMENTS | CODE | TOTAL RETURN | VOLATILITY | MAX DRAW DOWN |
|--------------------------|--------|--------------|------------|---------------|
| Sygnia Itrix MSCI EM 50 | SYGEMF | -21.93% | 23.71% | -32.27% |
| Sygnia Itrix 4Ird Rev Gb | SYG4IR | -22.00% | 24.93% | -37.07% |
| Satrix MSCI China ETF | STXCHN | -28.36% | 31.59% | -42.77% |
| AMI Big50 ex-SA ETF | AMIB50 | -28.54% | 77.22% | -43.62% |
| 1investRhodium ETF | ETFRHO | -35.64% | 59.24% | -56.28% |

Total Return is the monthly/annual performance incorporating price performance and immediate reinvestment of dividends. Volatility is the based on daily price standard deviation and presented as a monthly/annual volatility. Maximum draw down measures the worst case return outcome for an investor over the course of the period – based on purchase and subsequent sale timing that results in the largest loss of capital.

MONTHLY VALUE TRADED FOR ALL ETFs



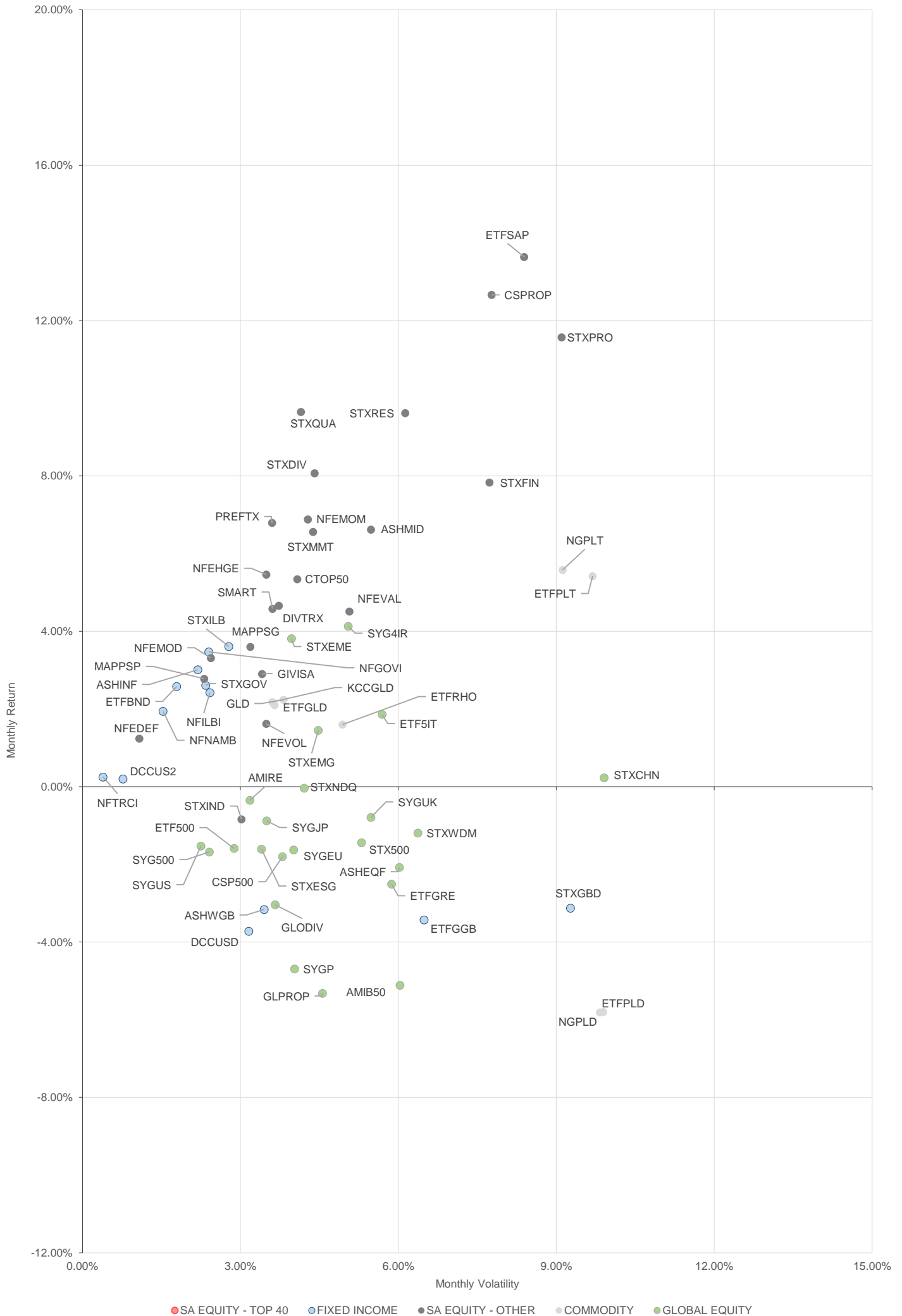
MONTHLY ETF TRADE STATISTICS | Top & Bottom Five Funds

| TOP 5 INSTRUMENTS | CODE | VOLUME | VALUE | TRADES | LIQUIDITY |
|----------------------------|---------|------------|-------------------|--------|-----------|
| New Gold Issuer Ltd | GLD | 5 334 038 | R1 458 124 166.38 | 4 131 | 9.18% |
| 1invest SA Property ETF | ETFSAP | 12 768 621 | R408 732 049.87 | 2 744 | 44.22% |
| Satrix DIVI Plus Portfolio | STXDIV | 12 192 282 | R39 676 844.89 | 1 035 | 1.81% |
| FNB MIDCAP ETF | FNB MID | 5 076 300 | R39 346 176.34 | 366 | 6.56% |
| Satrix ILBI Portfolio | STXILB | 5 353 644 | R38 520 566.56 | 262 | 8.50% |

| BOTTOM 5 INSTRUMENTS | CODE | VOLUME | VALUE | TRADES | LIQUIDITY |
|---------------------------|--------|--------|----------------|--------|-----------|
| KR Custodial Certificate | KCCGLD | 2 021 | R59 665 387.00 | 24 | 6.41% |
| 1investRhodium ETF | ETFRHO | 6 437 | R14 733 749.43 | 218 | 3.54% |
| 2YR Dollar Custodial Cert | DCCUS2 | 1 860 | R2 828 710.20 | 12 | 1.23% |
| NewFunds S&P GIVI SA T50 | GIVISA | 8 880 | R360 587.00 | 39 | 0.43% |
| Newfunds MAPPS Growth | MAPPSG | 13 754 | R359 525.00 | 44 | 0.76% |

Volume, Value and Trades are the aggregate counts of all trade activity in the ETF for the month on the JSE equity market. This includes central order book and reported trades, but excludes creations and redemptions. Liquidity is the total volume traded expressed as a percentage of the number of listed instruments for the ETF as at the end of the month.

TOTAL RETURN VERSUS VOLATILITY



● SA EQUITY - TOP 40 ● FIXED INCOME ● SA EQUITY - OTHER ● COMMODITY ● GLOBAL EQUITY

MONTHLY DETAILED ETF INFORMATION

SA EQUITY | TOP 40

Prices in Rands

In Rands

Values in Mn's

in 000's | in Mn's

| STANLIB COLLECTIVE INVESTMEN' CODE | START | LOW | HIGH | END | 1M % | DISTRIBUTION | MCAP OPEN | MCAP CLOSE | VOL | VALUE | TRADES | |
|------------------------------------|--------|-------|-------|-------|-------|--------------|-----------|------------|---------|-------|--------|--------|
| 1invest SWIX 40 ETF | ETFSWX | 12.49 | 11.63 | 12.84 | 12.85 | 2.88 | -- | 1667.03 | 1715.08 | 0.09 | 1.13 | 59.00 |
| 1invest TOP 40 ETF | ETFT40 | 64.65 | 60.00 | 65.87 | 65.74 | 1.69 | -- | 678.26 | 690.68 | 0.01 | 0.84 | 118.00 |

| FNB CIS MANCO (RF) (PROPRIETAR CODE) | START | LOW | HIGH | END | 1M % | DISTRIBUTION | MCAP OPEN | MCAP CLOSE | VOL | VALUE | TRADES | |
|--------------------------------------|--------|-------|-------|-------|-------|--------------|-----------|------------|---------|-------|--------|--------|
| FNB TOP 40 ETF | FNBT40 | 64.92 | 60.05 | 66.41 | 65.81 | 1.37 | -- | 2321.00 | 2365.98 | 1.47 | 92.45 | 577.00 |

| Satrix Managers (RF) (Pty) Ltd | CODE | START | LOW | HIGH | END | 1M % | DISTRIBUTION | MCAP OPEN | MCAP CLOSE | VOL | VALUE | TRADES |
|--------------------------------|--------|-------|-------|-------|-------|------|--------------|-----------|------------|------|--------|---------|
| Satrix 40 Portfolio | STX40 | 65.06 | 60.02 | 66.30 | 65.82 | 1.17 | -- | 11495.58 | 11761.51 | 3.13 | 197.22 | 2475.00 |
| Satrix SWIX Top 40 Portfolio | STXSWX | 12.54 | 11.60 | 12.90 | 12.82 | 2.23 | -- | 380.19 | 388.68 | 0.91 | 10.97 | 125.00 |

| SYGNIA ITRIX (RF) PROPRIETARY L CODE | START | LOW | HIGH | END | 1M % | DISTRIBUTION | MCAP OPEN | MCAP CLOSE | VOL | VALUE | TRADES | |
|--------------------------------------|--------|-------|-------|-------|-------|--------------|-----------|------------|--------|-------|--------|-------|
| Sygnia Itrix SWIX40 ETF | SYGSW4 | 12.71 | 11.86 | 12.94 | 12.99 | 2.20 | -- | 176.57 | 180.46 | 1.09 | 13.34 | 91.00 |
| Sygnia Itrix Top 40 ETF | SYGT40 | 66.03 | 61.07 | 67.13 | 67.00 | 1.47 | -- | 463.85 | 470.66 | 0.11 | 7.18 | 92.00 |

SA EQUITY | OTHER

Prices in Rands

In Rands

Values in Mn's

in 000's | in Mn's

| STANLIB COLLECTIVE INVESTMEN' CODE | START | LOW | HIGH | END | 1M % | DISTRIBUTION | MCAP OPEN | MCAP CLOSE | VOL | VALUE | TRADES | |
|------------------------------------|--------|-------|-------|-------|-------|--------------|-----------|------------|--------|-------|--------|---------|
| 1invest SA Property ETF | ETFSAP | 32.51 | 30.70 | 33.31 | 33.17 | 2.03 | -- | 655.99 | 957.88 | 12.76 | 408.54 | 2718.00 |

| FNB CIS MANCO (RF) (PROPRIETAR CODE) | START | LOW | HIGH | END | 1M % | DISTRIBUTION | MCAP OPEN | MCAP CLOSE | VOL | VALUE | TRADES | |
|--------------------------------------|--------|------|------|------|------|--------------|-----------|------------|--------|-------|--------|--------|
| FNB MIDCAP ETF | FNBMID | 8.07 | 7.55 | 8.20 | 8.07 | 0.00 | -- | 598.41 | 624.23 | 4.46 | 34.36 | 328.00 |

| CORESHARES INDEX TRACKER MA CODE | START | LOW | HIGH | END | 1M % | DISTRIBUTION | MCAP OPEN | MCAP CLOSE | VOL | VALUE | TRADES | |
|----------------------------------|--------|-------|-------|-------|-------|--------------|-----------|------------|---------|-------|--------|--------|
| CoreShares DivTrax | DIVTRX | 21.55 | 19.43 | 21.63 | 21.43 | -0.56 | -- | 132.87 | 134.27 | 0.15 | 3.04 | 136.00 |
| CORESHARESTOP50 | CTOP50 | 29.13 | 27.17 | 29.76 | 29.57 | 1.51 | -- | 1316.80 | 1344.09 | 0.69 | 19.28 | 194.00 |
| CoreShares SciBeta M-FI | SMART | 48.08 | 45.03 | 48.75 | 48.92 | 1.75 | -- | 123.01 | 125.16 | 0.04 | 1.77 | 50.00 |
| CoreShares PrefTrax | PREFTX | 10.52 | 10.20 | 10.85 | 10.45 | -0.67 | -- | 427.00 | 424.16 | 2.16 | 22.58 | 262.00 |
| CoreShares SAProp | CSPROP | 10.72 | 10.23 | 11.06 | 10.98 | 2.43 | -- | 298.46 | 299.11 | 1.24 | 13.08 | 230.00 |

| NEWFUNDS COLLECTIVE INVESTM CODE | START | LOW | HIGH | END | 1M % | DISTRIBUTION | MCAP OPEN | MCAP CLOSE | VOL | VALUE | TRADES | |
|----------------------------------|--------|-------|-------|-------|-------|--------------|-----------|------------|--------|-------|--------|--------|
| NEWFUNDS EQUITY MOM ETF | NFEMOM | 42.67 | 40.14 | 43.01 | 42.56 | -0.26 | -- | 362.28 | 361.35 | 0.60 | 24.99 | 116.00 |
| Newfunds MAPPs Growth | MAPPSP | 26.63 | 25.13 | 27.14 | 27.11 | 1.80 | -- | 48.11 | 48.98 | 0.01 | 0.27 | 33.00 |
| Newfunds MAPPs Protect | MAPPSP | 45.77 | 44.34 | 46.63 | 46.52 | 1.64 | -- | 50.75 | 51.58 | 0.08 | 3.44 | 43.00 |
| NewFunds S&P GIVI SA T50 | GIVISA | 40.72 | 38.34 | 41.89 | 41.75 | 2.53 | -- | 83.77 | 85.89 | 0.01 | 0.21 | 33.00 |
| NEWFUNDS SHARIA TOP40 | NFSH40 | 4.48 | 3.96 | 4.59 | 4.48 | 0.00 | -- | 69.78 | 69.78 | 0.37 | 1.60 | 139.00 |
| NF Equity Value ETF | NFEVAL | 12.28 | 11.55 | 12.66 | 12.55 | 2.20 | -- | 334.24 | 341.59 | 0.89 | 10.68 | 129.00 |
| NF Low Volatility ETF | NFEVOL | 9.97 | 9.54 | 9.95 | 9.89 | -0.80 | -- | 131.13 | 130.08 | 0.21 | 2.01 | 38.00 |
| NF VM Defensive EquityETF | NFEDEF | 10.88 | 10.57 | 11.00 | 10.96 | 0.74 | -- | 56.40 | 56.82 | 0.01 | 0.14 | 14.00 |
| NF VM High Growth EQETF | NFEHGE | 11.15 | 10.52 | 11.28 | 11.24 | 0.81 | -- | 82.23 | 82.90 | 0.01 | 0.14 | 30.00 |
| NF VM Moderate Equity ETF | NFEMOD | 10.86 | 10.34 | 10.89 | 10.83 | -0.28 | -- | 60.43 | 60.26 | 0.13 | 1.43 | 17.00 |

| Satrix Managers (RF) (Pty) Ltd | CODE | START | LOW | HIGH | END | 1M % | DISTRIBUTION | MCAP OPEN | MCAP CLOSE | VOL | VALUE | TRADES |
|--------------------------------|--------|-------|-------|-------|-------|-------|--------------|-----------|------------|-------|-------|--------|
| Satrix DIVI Plus Portfolio | STXDIV | 3.38 | 3.11 | 3.45 | 3.42 | 1.18 | -- | 2265.92 | 2302.99 | 11.74 | 38.13 | 953.00 |
| Satrix FINI Portfolio | STXFIN | 16.24 | 15.26 | 17.33 | 17.22 | 6.03 | -- | 1051.33 | 1097.55 | 2.67 | 42.98 | 464.00 |
| Satrix INDI Portfolio | STXIND | 78.08 | 70.96 | 78.64 | 77.69 | -0.50 | -- | 1771.51 | 1747.13 | 0.72 | 53.32 | 580.00 |
| Satrix Momentum Portfolio | STXMMT | 12.46 | 11.60 | 12.73 | 12.62 | 1.28 | -- | 34.98 | 35.43 | 0.18 | 2.13 | 44.00 |
| Satrix Property Portfolio | STXPRO | 9.86 | 9.20 | 10.00 | 9.88 | 0.20 | -- | 319.18 | 380.10 | 1.43 | 13.81 | 234.00 |
| Satrix Quality SA Port | STXQUA | 8.19 | 7.29 | 8.19 | 8.09 | -1.22 | -- | 62.54 | 65.82 | 0.22 | 1.70 | 96.00 |
| Satrix RAFI 40 Portfolio | STXRAF | 21.15 | 19.66 | 21.62 | 21.49 | 1.61 | 0.13 | 1236.79 | 1260.97 | 0.86 | 17.62 | 298.00 |
| Satrix RESI Portfolio | STXRES | 79.10 | 68.41 | 79.64 | 78.23 | -1.10 | -- | 1161.82 | 1062.99 | 0.63 | 46.71 | 632.00 |

GLOBAL EQUITY

Prices in Rands

In Rands

Values in Mn's

in 000's | in Mn's

| STANLIB COLLECTIVE INVESTMEN' CODE | START | LOW | HIGH | END | 1M % | DISTRIBUTION | MCAP OPEN | MCAP CLOSE | VOL | VALUE | TRADES | |
|------------------------------------|--------|--------|--------|--------|--------|--------------|-----------|------------|--------|-------|--------|--------|
| 1invest Global REIT ETF | ETFGRE | 21.60 | 18.75 | 22.77 | 20.62 | -4.54 | -- | 52.26 | 50.09 | 0.11 | 2.32 | 135.00 |
| 1invest MSCI World ETF | ETFWLD | 61.25 | 57.50 | 64.00 | 60.44 | -1.32 | -- | 107.43 | 106.61 | 0.03 | 1.68 | 104.00 |
| 1INVEST S&P500 INDEX ETF | ETF500 | 335.76 | 312.46 | 344.03 | 332.23 | -1.05 | -- | 119.17 | 109.61 | 0.04 | 13.56 | 243.00 |
| 1invest S&P500 IT ETF | ETF5IT | 14.11 | 12.66 | 14.54 | 13.63 | -3.40 | -- | 487.20 | 458.50 | 2.76 | 37.34 | 430.00 |

| FNB CIS MANCO (RF) (PROPRIETAR CODE) | START | LOW | HIGH | END | 1M % | DISTRIBUTION | MCAP OPEN | MCAP CLOSE | VOL | VALUE | TRADES | |
|--------------------------------------|--------|-------|-------|-------|-------|--------------|-----------|------------|---------|-------|--------|--------|
| FNB GLOBAL 1200 FOF ETF | FNBEQF | 63.85 | 59.79 | 64.94 | 63.01 | -1.32 | 0.15 | 1409.81 | 1391.26 | 0.43 | 27.20 | 338.00 |

| CLOUD ATLAS (RF) PROPRIETARY CODE | START | LOW | HIGH | END | 1M % | DISTRIBUTION | MCAP OPEN | MCAP CLOSE | VOL | VALUE | TRADES | |
|-----------------------------------|--------|------|------|------|------|--------------|-----------|------------|------|-------|--------|-------|
| AMI Big50 ex-SA ETF | AMIB50 | 7.00 | 5.30 | 8.01 | 6.36 | -9.14 | -- | 5.40 | 4.91 | 0.02 | 0.12 | 98.00 |

| CORESHARES INDEX TRACKER MA CODE | START | LOW | HIGH | END | 1M % | DISTRIBUTION | MCAP OPEN | MCAP CLOSE | VOL | VALUE | TRADES | |
|----------------------------------|--------|-------|-------|-------|-------|--------------|-----------|------------|---------|-------|--------|--------|
| CoreShares Global Prop | GLPROP | 44.26 | 40.34 | 44.69 | 41.62 | -5.96 | -- | 607.96 | 584.19 | 0.96 | 39.36 | 339.00 |
| CoreShares GlobalDivTrax | GLODIV | 16.14 | 15.30 | 16.55 | 15.96 | -1.12 | -- | 879.98 | 882.94 | 1.35 | 21.63 | 371.00 |
| CoreShares S&P 500 | CSP500 | 65.92 | 60.91 | 69.50 | 64.74 | -1.79 | -- | 1422.90 | 1437.90 | 0.80 | 50.29 | 527.00 |

| Satrix Managers (RF) (Pty) Ltd | CODE | START | LOW | HIGH | END | 1M % | DISTRIBUTION | MCAP OPEN | MCAP CLOSE | VOL | VALUE | TRADES |
|--------------------------------|--------|--------|--------|--------|--------|-------|--------------|-----------|------------|------|--------|---------|
| Satrix MSCI EMG Markets | STXEMG | 49.15 | 46.04 | 49.56 | 48.83 | -0.65 | -- | 1777.89 | 1766.31 | 1.03 | 48.64 | 544.00 |
| Satrix MSCI World Feeder | STXWDM | 61.79 | 57.70 | 63.02 | 60.73 | -1.72 | -- | 6168.84 | 6014.43 | 3.06 | 185.33 | 1261.00 |
| Satrix Nasdaq 100 Prtf | STXNDQ | 117.08 | 102.38 | 120.25 | 111.22 | -5.01 | -- | 2695.29 | 2604.87 | 0.90 | 99.92 | 1485.00 |
| Satrix S&P 500 Feeder | STX500 | 67.76 | 62.60 | 69.27 | 66.36 | -2.07 | -- | 2681.54 | 2646.04 | 1.61 | 106.31 | 1100.00 |
| Satrix MSCI China ETF | STXCHN | 37.12 | 33.50 | 37.36 | 36.86 | -0.70 | -- | 1030.32 | 1019.42 | 1.41 | 49.34 | 946.00 |
| Satrix MSCI EM ESG ETF | STXEME | 43.19 | 40.15 | 43.67 | 43.09 | -0.23 | -- | 121.12 | 112.23 | 0.27 | 11.24 | 107.00 |
| Satrix MSCI World ESG ETF | STXESG | 54.34 | 50.87 | 55.55 | 53.18 | -2.13 | -- | 158.03 | 154.66 | 0.10 | 5.26 | 137.00 |

| SYGNIA ITRIX (RF) PROPRIETARY L CODE | START | LOW | HIGH | END | 1M % | DISTRIBUTION | MCAP OPEN | MCAP CLOSE | VOL | VALUE | TRADES | |
|--------------------------------------|--------|--------|--------|--------|--------|--------------|-----------|------------|----------|-------|--------|--------|
| Sygnia Itrix 4Ind Rev Gb | SYG4IR | 39.03 | 34.81 | 39.96 | 37.79 | -2.07 | -- | 2151.67 | 2083.31 | 3.20 | 118.22 | 811.00 |
| Sygnia Itrix Eurostoxx50 | SYGEU | 63.40 | 61.33 | 65.82 | 64.78 | 2.18 | -- | 3394.37 | 3468.26 | 0.85 | 53.45 | 572.00 |
| Sygnia Itrix FTSE100 | SYGUK | 151.33 | 143.56 | 152.86 | 151.70 | 0.24 | -- | 996.93 | 999.37 | 0.10 | 14.45 | 268.00 |
| Sygnia Itrix Gbl Pro ETF | SYGP | 45.62 | 41.80 | 46.07 | 43.12 | -5.48 | -- | 554.86 | 524.46 | 0.37 | 16.38 | 251.00 |
| Sygnia Itrix MSCI Japan | SYGJP | 14.45 | 14.22 | 14.72 | 14.33 | -0.83 | -- | 877.95 | 870.66 | 1.02 | 14.75 | 199.00 |
| Sygnia Itrix MSCI US | SYGUS | 61.84 | 56.85 | 63.33 | 60.38 | -2.36 | -- | 6105.09 | 5900.58 | 1.14 | 68.48 | 817.00 |
| Sygnia Itrix MSCI World | SYGWD | 44.59 | 41.94 | 45.37 | 44.02 | -1.28 | -- | 11038.59 | 10843.99 | 2.42 | 105.79 | 868.00 |
| Sygnia Itrix S&P 500 ETF | SYG500 | 66.64 | 61.73 | 68.19 | 65.36 | -1.92 | -- | 2898.63 | 2842.95 | 0.91 | 59.71 | 596.00 |

MONTHLY DETAILED ETF INFORMATION

COMMODITIES

| | | Prices in Rands | | | | In Rands | | Values in Mn's | | in 000's in Mn's | | |
|--------------------------------|--------|-----------------|---------|---------|---------|----------|--------------|----------------|------------|--------------------|--------|--------|
| INVEST ETF ISSUER (RF) LIMITED | CODE | START | LOW | HIGH | END | 1M % | DISTRIBUTION | MCAP OPEN | MCAP CLOSE | VOL | VALUE | TRADES |
| 1InvestGold ETF | ETFGLD | 289.57 | 280.03 | 295.53 | 280.63 | -3.09 | -- | 619.68 | 544.42 | 0.02 | 5.37 | 112.00 |
| 1InvestPalladium ETF | ETFPLD | 345.15 | 294.45 | 352.98 | 302.36 | -12.40 | -- | 315.48 | 155.43 | 0.42 | 142.04 | 123.00 |
| 1InvestPlatinum ETF | ETFPLT | 149.09 | 142.88 | 155.92 | 145.73 | -2.25 | -- | 1977.68 | 1797.58 | 0.53 | 78.25 | 98.00 |
| 1InvestRhodium ETF | ETFRHO | 2570.04 | 2089.09 | 2570.00 | 2188.53 | -14.84 | -- | 480.35 | 398.10 | 0.01 | 14.48 | 208.00 |

| FIRSTRAND BANK LIMITED | CODE | START | LOW | HIGH | END | 1M % | DISTRIBUTION | MCAP OPEN | MCAP CLOSE | VOL | VALUE | TRADES |
|--------------------------|--------|----------|----------|----------|----------|-------|--------------|-----------|------------|------|-------|--------|
| KR Custodial Certificate | KCCGLD | 30417.00 | 29430.00 | 30943.00 | 29489.00 | -3.05 | -- | 958.59 | 929.35 | 0.00 | 59.67 | 24.00 |

| NEWGOLD ISSUER (RF) LIMITED | CODE | START | LOW | HIGH | END | 1M % | DISTRIBUTION | MCAP OPEN | MCAP CLOSE | VOL | VALUE | TRADES |
|-----------------------------|-------|--------|--------|--------|--------|--------|--------------|-----------|------------|------|----------|---------|
| New Gold Issuer Ltd | GLD | 277.18 | 265.00 | 286.36 | 268.46 | -3.15 | -- | 16707.84 | 15591.60 | 5.32 | 1,453.75 | 4057.00 |
| New Gold Platinum ETF | NGPLT | 147.84 | 142.18 | 155.00 | 144.58 | -2.21 | -- | 6105.79 | 5826.57 | 0.54 | 80.21 | 164.00 |
| NewGold Palladium ETF | NGPLD | 347.66 | 295.00 | 351.92 | 307.68 | -11.50 | -- | 391.01 | 346.05 | 0.27 | 84.71 | 93.00 |

SA & GLOBAL FIXED INCOME

| | | Prices in Rands | | | | In Rands | | Values in Mn's | | in 000's in Mn's | | |
|------------------------------------|--------|-----------------|-------|-------|-------|----------|--------------|----------------|------------|--------------------|-------|--------|
| STANLIB COLLECTIVE INVESTMEN' CODE | CODE | START | LOW | HIGH | END | 1M % | DISTRIBUTION | MCAP OPEN | MCAP CLOSE | VOL | VALUE | TRADES |
| 1Invest G7 Govt Bond ETF | ETFGGB | 77.93 | 75.26 | 80.59 | 77.06 | -1.12 | -- | 39.62 | 35.71 | 0.12 | 9.65 | 91.00 |
| 1Invest SA Bond ETF | ETFBND | 86.19 | 84.34 | 87.82 | 86.78 | 0.68 | -- | 77.57 | 78.10 | 0.12 | 9.91 | 73.00 |

| FNB CIS MANCO (RF) (PROPRIETAR CODE | START | LOW | HIGH | END | 1M % | DISTRIBUTION | MCAP OPEN | MCAP CLOSE | VOL | VALUE | TRADES | |
|-------------------------------------|--------|-------|-------|-------|-------|--------------|-----------|------------|--------|-------|--------|--------|
| FNB WORLD GOVBOND ETF | FNBWGB | 6.80 | 6.62 | 7.00 | 6.69 | -1.62 | 0.03 | 123.32 | 121.32 | 0.33 | 2.25 | 200.00 |
| FNB GOV INF LNKD BND ETF | FNBINF | 23.02 | 18.60 | 23.19 | 23.02 | 0.00 | -- | 426.67 | 426.67 | 1.21 | 27.34 | 131.00 |

| FIRSTRAND BANK LIMITED | CODE | START | LOW | HIGH | END | 1M % | DISTRIBUTION | MCAP OPEN | MCAP CLOSE | VOL | VALUE | TRADES |
|---------------------------|--------|---------|---------|---------|---------|-------|--------------|-----------|------------|------|-------|--------|
| 2YR Dollar Custodial Cert | DCCUS2 | 1531.40 | 1509.70 | 1584.40 | 1516.10 | -1.00 | -- | 231.24 | 228.93 | 0.00 | 2.82 | 11.00 |
| Dollar Custodial Cert | DCCUSD | 1521.40 | 1494.10 | 1560.39 | 1497.65 | -1.56 | -- | 205.39 | 202.18 | 0.02 | 38.06 | 17.00 |

| NEWFUNDS COLLECTIVE INVESTM CODE | START | LOW | HIGH | END | 1M % | DISTRIBUTION | MCAP OPEN | MCAP CLOSE | VOL | VALUE | TRADES | |
|----------------------------------|--------|-------|-------|-------|-------|--------------|-----------|------------|---------|-------|--------|---------|
| NEWFUNDS TRACI 3-M ETF | NFTRCI | 29.05 | 28.16 | 29.30 | 29.14 | 0.31 | -- | 241.60 | 242.35 | 0.26 | 7.53 | 124.00 |
| NEWFUNDS GOVI ETF | NFGOVI | 77.47 | 74.55 | 81.97 | 78.10 | 0.81 | -- | 3286.21 | 3312.94 | 2.19 | 170.65 | 1608.00 |
| NEWFUNDS ILBI ETF | NFILBI | 82.58 | 81.50 | 84.38 | 84.19 | 1.95 | 0.19 | 115.61 | 117.87 | 0.04 | 3.52 | 79.00 |
| NFNAM 10 Bonds | NFNAMB | 15.91 | 16.39 | 17.14 | 16.93 | 6.41 | -- | 325.08 | 345.92 | 0.06 | 0.98 | 35.00 |

| Satrix Managers (RF) (Pty) Ltd | CODE | START | LOW | HIGH | END | 1M % | DISTRIBUTION | MCAP OPEN | MCAP CLOSE | VOL | VALUE | TRADES |
|--------------------------------|--------|-------|-------|-------|-------|-------|--------------|-----------|------------|-------|--------|--------|
| Satrix ILBI Portfolio | STXILB | 7.15 | 7.02 | 7.34 | 7.28 | 1.82 | -- | 400.51 | 458.75 | 4.87 | 35.08 | 239.00 |
| Satrix Global Bond ETF | STXGBD | 36.29 | 35.63 | 37.45 | 35.97 | -0.88 | -- | 39.96 | 39.61 | 0.16 | 5.72 | 94.00 |
| Satrix SA Bond Portfolio | STXGOV | 8.50 | 8.25 | 8.76 | 8.64 | 1.65 | -- | 739.34 | 794.71 | 18.82 | 161.11 | 948.00 |

The information, data and compilations, or any part thereof, which make up the JSE ETF Factsheet ("Data") is being provided to you strictly for informational purposes. JSE Limited ("JSE") reserves the right to withdraw, modify, or replace the Data (or any part thereof) at any time.

To the extent allowed by law, JSE does not (expressly, tacitly or impliedly) guarantee or warrant the availability, sequence, accuracy, completeness, reliability or any other aspect of any of the Data or that the Data contained therein is up to date. To the extent allowed by law, neither the JSE nor any of its directors, officers, employees, contractors, agents or representatives are liable to any way to the reader/user or to any other natural or juristic person (Person) for any loss or damage as a result of any errors contained in the specification, for any loss arising from use of, or reliance on the Data in this JSE ETF Factsheet or any actions taken or not taken by or behalf of any Person in reliance on any Data in this JSE ETF Factsheet. You may not copy, reproduce, redistribute, alter or transmit any Data without the prior written consent of the JSE.

The Johannesburg Stock Exchange prides itself on a 130 year history as an effective, reputable trading platform. We are currently ranked the 19th largest stock exchange in the world based on market capitalization, and the largest exchange on the African continent. The JSE offers secure and efficient primary and secondary capital markets across a diverse range of asset classes which include equities, commodities, currencies, interest rates and bonds. We are the exchange of choice for local and international investors looking for investment opportunities across leading capital markets in South Africa and the broader African continent.

The JSE's achievements escalate through to this year's 20th anniversary of the first ETF listing on the local Exchange Traded Fund (ETF) market. Today, the ETF market capitalization is close to R90bn with over 70 listed ETFs on the JSE Main Board.

Our Primary Markets Team is a key access point for existing and/or potential issuers to gain exposure to local and international investor capital. The team focuses on listing companies and instruments on the Equity (Main Board and AltX) or Debt Market and aids in product development.

Contact the team: listingontheJSE@jse.co.za

Our Information Services Team works to deliver world class market data to our clients. This data can often be customized on request providing our clients with the exact Intel required to make business and portfolio decisions.

We offer live, delayed, end of day, reference and historical market data for:

- Equities
- Indices
- Equity Derivatives
- Commodity Derivatives
- Commodity Derivatives
- Currency Derivatives
- Interest Rate Derivatives
- Bonds
- Market Announcements (SENS)

We have nearly 170 indices across a wide variety of methodologies and investment criteria.

Our partnership with FTSE Russell includes:

- FTSE/JSE All Share
- FTSE/JSE Top 40
- FTSE/JSE ESG
- FTSE/JSE Factor Indices
- FTSE/JSE Shariah
- FTSE/JSE RAFI and many more

We develop customised indices to suit your needs.

- Our other service offerings include:
- Bond ETP data
- Tick data
- Corporate Actions
- Business Intelligence Reports
- Valuations

Contact the team: mdclients@jse.co.za